

LETHBRIDGE & DISTRICT

JANUARY - 1943



TELEPHONE DIRECTORY

Store
Information

3727

THE T. EATON CO.
WESTERN LIMITED
BRANCH STORE

Store
Information

3727

Drugs, Hosiery, Men's Wear, Notions, Wools.....2140
Foodateria (Groceries, Fruits, Vegetables).....3282
Meats and Fish.....2657
Hardware, Automobile Supplies, Stoves.....2054

Sporting Goods, China, Baggage.....3857
Piece Goods, Shoes, Optical.....3857
Furniture, House Furnishings, Radios.....2722
Women's and Juvenile Wear.....3605



PHONE
2576

Milk
Cream

Crystal Dairy
LIMITED

The Home of Pure Dairy Products

■ **TASTE THE DIFFERENCE** ■

WE RENT INDIVIDUAL COLD STORAGE LOCKERS

FARMERS:—We Solicit Your Shipments of Churning Cream and Eggs

PHONE
2577

Ice
Cream



BIJOU TAXI 2750

W. HOSELTON, Prop.



50c. AND UP

FAT'S TAXI

STEVE SMEREK

323 - 5th St. So.

24 HOUR SERVICE

HEATED CARS

PHONE

3838

HOTEL ALEXANDRA

PHONE

3142

Air Conditioned

FREE LOCAL CALLS • CENTRALLY LOCATED

PHONE

3142

MARQUIS TAXI

CITY
TRIPS

50c

PHONE

3545

OFFICE
MARQUIS
HOTEL

McGAVIN'S

BETTER BREAD and CAKES

Phone **3378**



THE CITY'S BEST

24 HOUR SERVICE

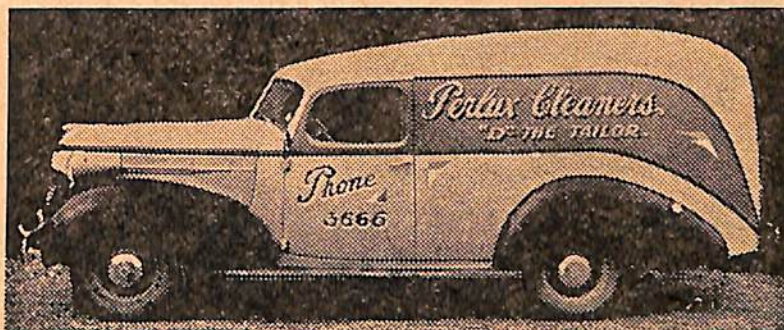
Bill's Taxi

2224

Fast, Courteous Service
Evans & Alexander

210A - 5th Street South

DE LUXE DRY CLEANING



*Alterations
and
Repairs*

■
NIXON & SWAN
Props.
■

2 Doors North of
Capitol Theatre

PHONE
3666

EMERGENCY CALLS

FIRE
3 3 3 3

POLICE
2 1 4 5

GAS
2 5 1 0
Night 2439

LIGHT
3 6 4 5
Night 2404

WATER
3 5 4 1
Night 3731

Telephone Service Calls

INFORMATION
9 2

LONG DISTANCE
0

TROUBLE
9 3

ALBERTA GOVERNMENT TELEPHONES

TELEPHONE DIRECTORY

OF

LETHBRIDGE

and District

JANUARY, 1943

HEAD OFFICE: C.P.R. Building, Edmonton

HON. W. A. FALLOW
Minister of Railways and Telephones

J. D. BAKER
General Manager

A. M. MITCHELL
Comptroller

W. C. BRUCE
General Plant Superintendent

W. B. FERGUSON
General Traffic Superintendent

Copyright, Canada, by Alberta Government Telephones

This directory is fully protected under the Copyright Laws of Canada and the publication of local telephone directories based upon information contained herein will be regarded as infringement of our copyright and the publishers thereof subject to action by us to protect that copyright. Subscribers and others should carefully consider the foregoing if solicited for advertising in local directories.

PRINTED IN CANADA

Alberta Government Telephones

Head Office: C.P.R. Building, Edmonton
Lethbridge Office: 808-810 4th Avenue South

HOW TO TRANSACT BUSINESS

With the Department of Telephones

APPLICATIONS FOR NEW SERVICE—CHANGES IN LOCATION— TERMINATION OF SERVICE

All matters relating to new telephone service, removals, termination of service, directory listings, adjustment of accounts, collection of bills, etc., are handled at the Business Offices of the Department.

CHANGES IN DIRECTORY LISTINGS

This telephone directory is issued regularly twice a year. Notification as to new listings, changes or corrections should be made to the Local Office at once.

DIRECTORY ADVERTISING

For information as to space or rates for Directory advertising, please communicate with Local Business Office.

SERVICE DIFFICULTIES

Below are shown the telephone numbers or persons to be called to report service difficulties. If at any time difficulties are not promptly corrected call the Manager of your Central Office:

INFORMATION—

For Information regarding New Subscribers and Changes of Telephone Numbers Call "Information" Dial 92

TROUBLE—

To Report Telephone Out of Order or unsatisfactory Local Service Call "Trouble" Dial 93

To Report Unsatisfactory Long Distance Service Call "Chief Operator" Dial 98

For District Traffic Superintendent Dial 4221

LONG DISTANCE—

To Call Long Distance Operator Dial 0

TERMS AND CONDITIONS

Under Which Telephone Service is Furnished

USE OF TELEPHONE

1. The service furnished is for the exclusive use of the subscriber and members of the subscriber's household or the subscriber's employees upon the subscriber's business, and the subscriber shall not extend the use of the telephone to any other person, nor shall the subscriber transmit messages for any other person; and if a residence telephone is used for business or professional purposes the Department may charge therefor the rate charged for business or professional telephones. The residence telephone number of a subscriber may be advertised only in conjunction with the advertising of his business telephone number.

The Department will endeavor to keep the lines and instruments in good working order and undertakes to clear trouble or make repairs with all reasonable despatch, but does not guarantee uninterrupted service.

The right of the subscriber is to use the instruments and connecting lines where the Department may place them, but not elsewhere, under such rules as the Department may from time to time prescribe.

The use of obscene, profane or abusive language while using the telephone is strictly forbidden and service may be immediately discontinued for violation of this rule.

2. The instruments and all accessories connected therewith shall remain the property of the Department and the subscriber shall not remove, alter, or make any attachment thereto; and the subscriber agrees to compensate the Department on demand for any damage, loss or destruction of the Department's instruments and accessories whilst such instruments and accessories are in or upon the premises of the subscriber.

CONSTRUCTION

3. When it is necessary to erect poles or anchors in order to carry the wires from the main telephone line on the road allowance or street to the applicant's premises, such poles and anchors in connection therewith will be supplied and erected by the Department at the expense of the applicant.

CHARGES — HOW PAID

4. All charges for installations, moves, and monthly rentals shall be paid in advance, which shall entitle the subscriber to service with all subscribers connected to the same exchange. Regular toll rates will be charged for all service to points outside of the exchange.

5. Subscribers shall pay the installation charges, first rental instalment (and construction charges, if any) strictly in advance. Excess mileage charge will be added if outside of exchange limits. If subsequent rental accounts remain unpaid after the 15th of the month, service shall be discontinued and no rebate or reduction shall be allowed for such interruption to service.

6. Subscribers shall pay monthly, at schedule rates, for all messages and conversations over the Long Distance lines. If said accounts remain unpaid after the 15th of the month, further credit shall be refused until account is paid.

7. Subscribers shall pay promptly, upon presentation of account, all charges for other miscellaneous items. If these charges are not paid within 15 days, service shall be discontinued.

COMPLAINTS RE LONG DISTANCE SERVICE

8. While the Department will carefully consider complaints in connection with toll service at any time received, it would be appreciated if subscribers would make such complaints immediately after conversation has taken place.

VACATION ALLOWANCE

9. Should a subscriber desire to have his Exchange Residence Service temporarily discontinued, owing to the closing of his residence, he may do so without cancelling contract or having telephone removed, and, if arranged for in advance in writing, an allowance of two-thirds of the rate per month will be made for a period of not less than one month and not exceeding three months in any one year. Subscriber shall state, when making application, the period for which he expects to be absent and shall pay for this period in advance. Subscriber will notify the Department when he wishes service resumed, either in writing or by calling at the office and signing re-connect order. Owing to the fact that Multi-Party Line Telephones cannot be disconnected without a special trip being made to their location, this regulation will not apply to Multi-Party Line Service.

MOVES

10. The telephone is first located where the subscriber directs and must not be moved or interfered with. When the subscriber desires to have the telephone moved to any other location, notice in writing should be given to the local office, at least ten days before the change is desired. The work will then be done as promptly as possible at regular charges.

JOINT USER SERVICE

11. A joint user is a person, firm or corporation who shares the subscriber's exchange service in accordance with tariff provisions. To facilitate this use of service, a directory listing is included.

Business joint user — one-third of business wall-set rate.

Residence joint user—50c per month.

CANCELLATION OF SERVICE

12. Subscribers giving up service must notify the Department in writing, or call at office and sign "Take Out" order. Failing to do this, subscriber will be liable for all charges up to date instrument is removed or taken over by a new subscriber.

DIRECTORIES

13. The Department of Telephones assumes no liability on account of errors in or omissions from its directories. Telephone directories are and remain the property of Alberta Government Telephones. They are printed for the exclusive use of the Department's patrons and are loaned to its subscribers. All persons are cautioned against reproducing their contents, which are fully protected by copyright. Subscribers must not use any binder, holder or other attachments, except as provided by the Department.

TELEPHONE NUMBERS

14. A subscriber's telephone number is not a part of the application for service, but numbers will only be changed when absolutely necessary or for the betterment of the service.

HOW TO USE THE TELEPHONE

AUTOMATIC TELEPHONE

Consult the Telephone Directory for the correct number before you make a call. Do not trust to your memory.

Call "92" for Information if the person or firm you wish to call is not listed in the Directory.

1. Remove the Receiver.—Be careful not to move the hook at any time during the call.

2. Listen for the Dial Tone.—This is a steady humming sound, when received it indicates that the equipment is ready for you to dial.

3. What to Dial.—It is necessary to dial each figure of the number in rotation.

4. How to Dial.—Suppose you are calling 2301. To dial this number proceed as follows:—

(1) Remove receiver and listen for the dial tone.

(2) Place your finger in the hole over the figure "2".

(3) Turn the dial around until your finger strikes the finger stop, then lift your finger and allow the dial to return to rest without touching it.

(4) Repeat this operation for the figures 3-0-1. If you find that you have made an error before you have

completed dialing, hang up the receiver for a few seconds, then remove the receiver, listen for the dial tone and after hearing it, dial your call again.

5. Ringing and Busy Signals.—After you have finished dialing you should hear in the receiver either the ringing signal (an intermittent burr-rr-ing sound) indicating that the called telephone is being rung, or the busy signal—a rapid buzz-buzz-buzz—indicating that the called line is busy.

If you hear the ringing signal and receive no answer within a reasonable period, hang up the receiver and call later.

If you hear the busy signal hang up the receiver and after waiting a reasonable length of time call again.

If you hear neither signal within half a minute, hang up the receiver for a few seconds, then remove it and dial again.—If the same condition is found after several attempts, dial "93" and report the condition to "Trouble" operator.

6. After You Have Finished Talking.—Hang up your receiver—This will disconnect you from the called telephone. Leave your receiver on the hook for a few seconds before starting to make another call.

AUTOMATIC EXCHANGES

Information:—Call Information "92" for numbers of New Subscribers, Changes, Long Distance Line Charges, New Toll Offices, etc.

Trouble:—Complaints regarding Telephone Troubles should be reported to Trouble Operator, Telephone No. 93. When reporting trouble give telephone number affected and its location, also state as accurately as possible just how trouble manifests itself. Try to be specific, as incomplete information frequently causes delay in locating nature of trouble.

If a line you are trying to call repeatedly tests "busy," notify Trouble Operator, who will investigate whether same is caused by an abnormal condition on line, or from use. If any line appears too busy for good Service, write to the District Commercial Superintendent. Subscribers are requested not to engage Trouble or Information Operators in conversation longer than necessary, as by so doing the operator will be prevented from giving prompt attention to other patrons.

MANUAL TELEPHONE

Consult the Telephone Directory for the correct number before you make a call. Do not trust to your memory.

Ask for "Information" if the person or firm you wish to call is not listed in the Directory.

1. To Call the Operator give one long ring before removing the receiver from the hook and then hold the receiver to the ear.

2. When the Operator Replies by saying, "Number?" give the number of the subscriber's telephone desired, slowly and distinctly.

Example:—"1429" should be pronounced "one-four-two-nine." "175" should be pronounced "one-seven-five."

3. Face the Transmitter with the lips almost touching the mouthpiece. Speak naturally, distinctly and not too rapidly.

4. Keep the Receiver to the Ear, and the Operator, after repeating the number, will connect you with the subscriber called for. If the desired line is found to be in use the operator will report "Line Busy."

5. When You Have Finished Talking place the receiver on the hook, small end up, and give a short ring.

This gives the operator a signal to disconnect and you are then in a position to call another number or to be called.

NOTE:—At Camrose, Lacombe, Lloydminster, Hanna and Wetaskiwin (Common Battery Exchange) no ringing, except by rural line subscribers, is necessary. Simply remove receiver from hook and in all other respects proceed as instructed above, placing the receiver on the hook when conversation is finished.

6. Do Not Use the Telephone during a thunderstorm.

7. Rural Line Subscribers should limit their conversation to Five Minutes' duration and must not "listen in" to conversation not intended for them, as it interferes with the Service.

Complaints:—Complaints regarding telephone trouble and unsatisfactory Service should be made to the Local Manager, Agent or Chief Operator at the Office concerned, and if not rectified within a reasonable time, the matter should be referred to the General Traffic Superintendent at Edmonton.

LONG DISTANCE SERVICE

RULES AND REGULATIONS

To make a Long Distance Call, first call "Long Distance"—when the Long Distance Operator answers, give her your telephone number, followed by the details of your call as indicated below.

CLASSIFICATION OF LONG DISTANCE SERVICE

1. STATION-TO-STATION CALLS

The Station-to-Station rate applies when it is not desired to establish communication between particular persons.

Station-to-Station calls must be made by number whenever Telephone Directory information covering the called point is available. When such information is not available, the name or address under which the telephone is listed should be given, specifying that "anyone at that number will do."

EXAMPLE:—"4567, J. H. Brown speaking, I want to speak to Springdale, 684," or "I want to speak to Springdale, anyone at Mr. John Jones' residence (or business) telephone."

2. PERSON-TO-PERSON CALLS

(Except for points in Manitoba, British Columbia, Eastern Canada and the United States, evening and night rates do not apply to Person-to-Person Service.)

When a Long Distance Call is made, specifying that conversation is desired with a particular person and the connection is established and conversation held with that person, the "Person-to-Person" rate applies.

EXAMPLE:—"4567, J. H. Brown speaking, I want to speak to Springdale, 684, Mr. John Jones," or "If Mr Jones is not there, I will speak to Mr. A. F. Smith."

NOTE:—When a particular person is desired, the Long Distance operator must be so advised when the call is placed, otherwise charges will be made from the time connection is established with the telephone desired, whether the party is obtained or not.

Appointment Calls

An Appointment Call is a Person-to-Person call requiring communication to be established at a specified time, and order should be given to the Long Distance operator in the usual manner.

Messenger Calls

A Messenger Call is a Person-to-Person call, necessitating the services of a Messenger to secure the attendance of a specified person, and order should be given to the Long Distance operator in the usual manner. The Messenger Service and Report charges in such cases must be prepaid by the calling party if the call is placed from a Public Pay Station.

Collect Calls

Collect calls are Person-to-Person or Station-to-Station Calls, the charges for which are reversed, i.e., to be collected from the called party. In such cases the assent of the called party shall be obtained before the connection is established.

LONG DISTANCE SERVICE

RULES AND REGULATIONS—Continued

RATES AND CHARGES FOR LONG DISTANCE SERVICE

Long Distance Tolls will be charged to the subscriber from whose instrument the Long Distance call is placed, except those messages for which the receiving party expressly agrees to pay.

All rates quoted are for an initial period of three minutes. For over-time beyond the initial period a proportionate charge is made per minute.

The rates quoted on pages 8 and 9 are Station-to-Station Day Rates.

The Day Rate for a Station-to-Station call is the fundamental rate upon which the rates for other classes of Service are based.

The rate for a completed Person-to-Person Appointment or Messenger Call, including Written Messages and Telegrams, either Paid or Collect is approximately 25% higher than the corresponding Station-to-Station Day Rate.

Day rates only are used in computing charges on Person-to-Person, Appointment and Messenger Calls, including Written Messages and Telegrams.

Evening and Night Rates

Alberta & Saskatchewan—Reduced rates on Station-to-Station (anyone) calls are in effect from 7 p.m., to 12 Midnight, with a further reduction from Midnight to 4.30 a.m.

British Columbia, Manitoba, Eastern Canada and U.S.A.—Reduced rates are in effect from 7 p.m. to 4.30 a.m. including all day Sundays.

(NOTE:—In no case shall the Evening or Night rate, as the case may be, be less than 25c. for the initial period, unless the Day rate is less, in which case the Day, Evening and Night Rates shall be the same.)

Report Charges

Under certain conditions a Report Charge of approximately one-quarter of the Station-to-Station Day rate will be made on uncompleted Person-to-Person, Appointment and Messenger Calls, including Written Messages and Telegrams, to points in Alberta and Saskatchewan.

A Report Charge shall not be made on a Station-to-Station call except when the call is placed "Collect" and the charges have not been accepted.

PAY STATION SERVICE

Pay Station Telephones have been installed by the Department for the convenience of subscribers and the general public, in suitable locations throughout the Province. Local conversations may be had from these telephones at a charge of 5 cents for 5 minutes. Long Distance Service is furnished at regular tariff rates upon deposit of the amount of the initial charge (covering three minutes' conversation) the usual charges being made for excess time.

Non-subscribers who desire to use Subscribers' telephones should be referred to the nearest Public Pay Station.

If there is anything about our rates and practices you do not fully understand, please call our Local Manager or Chief Operator and they will be glad to explain.

LONG DISTANCE RATES

From Lethbridge

To Places connected with the Long Distance Lines of the Alberta Government Telephones and Connecting Systems in Alberta.

NOTE:—These Rates are Subject to Change without Notice.

TO	Station-to-Station Day Rate 3 Mins.	TO	Station-to-Station Day Rate 3 Mins.	TO	Station-to-Station Day Rate 3 Mins.	TO	Station-to-Station Day Rate 3 Mins.
	\$ c		\$ c		\$ c		\$ c
Abbe	1.95	Carbon	.80	Emerald Lake	1.50	Jarrow	1.50
Acme	.80	Cardston	.30	Empress	.95	Jarvie	2.10
Airdrie	.75	Carmangay	.25	Endiang	1.00	Jasper	2.85
Alberta Beach	1.80	Carrot Creek	1.80	Entwistle	1.80	Jenner	.65
Alberta Box	1.50	Carstairs	.90	Erith	1.95	Johnson's Canyon	1.20
Alcomdale	1.80	Carvel	1.65	Erixon	1.15	Judson	.20
Alderson	.50	Castle Mountain	1.20	Esther	1.10		
Alexo	1.50	Castle Mountain Junction	1.20	Etter-McDougall	1.50		
Alnambra	1.20	Castor	1.10	Etzikom	.50		
Alix	1.15	Cavendish	.80	Evansburg	1.80	Kapasiwin	1.65
Alliance	1.20	Cereal	.95	Everts	1.15	Kaydee	1.95
Alsask, Sask.	1.05	Cessford	.70	Exshaw	.85	Killam	1.35
Altario	1.20	Champion	.30			Kinsella	1.50
Amber Valley	2.10	Chauvin	1.50			Kirriemuir	1.15
Andrew	1.80	Cherhill	1.80	Fallis	1.80	Kitscoty	1.65
Antross	1.50	Chinook	.90	Fawcett	2.10	Knob Hill	1.50
Armstrong	2.10	Chip Lake	1.80	Ferintosh	1.35		
Armada	.35	Chipman	1.65	Field	1.50		
Arrowwood	.50	Chisholm	2.25	Flatbush	2.10		
Ashmont	1.95	Claresholm	.30	Flat Lake	1.95	Lac La Biche	2.10
Ashwell	1.95	Clive	1.20	Foisy	1.80	Lacombe	1.20
Athabasca	2.10	Clyde	1.95	Foothills	1.80	Lac Ste Anne	1.80
Atlee	.75	Coalspur	1.95	Foremost	.40	Lafond	1.80
Atmore	2.25	Coal Valley	1.80	Forestburg	1.35	Lake Louise	1.30
		Cochrane	.80	Fort Assiniboine	2.10	Lake Louise Chateau	1.30
		Cold Lake	2.10	Fort Kent	2.10	Lamont	1.80
		Comper	1.20	Fort Saskatchewan	1.80	Langdon	.60
Banff	1.00	Condor	1.20	Fraser	1.50	Lavoy	1.65
Barons	.20	Conrad	.30	Freedom	1.95	Leduc	1.50
Barrhead	1.95	Consort	1.15			Legal	1.80
Bashaw	1.20	Cooking Lake (North)	1.65			Legend	.40
Bassano	.50	Cooking Lake (South)	1.65			Leo	1.00
Battle Lake	1.50	Coronado	1.80	Gadsby	1.10	Leslieville	1.35
Bawlf	1.35	Coronation	1.10	Gainford	1.80	Linaria	1.95
Beacon Hill	1.95	Coutts	.40	Galahad	1.20	Lindbergh	1.95
Beaumont	1.80	Cowley	.35	Gleichen	.55	Lisburn	1.80
Beaver Crossing	2.10	Craigmyle	.85	Glendon	1.95	Little Gem	1.00
Bellis	1.95	Cremona	.90	Glenevis	1.80	Lloydminster	1.65
Benalto	1.20	Crossfield	.85	Glenwood	.25	Lomond	.30
Bentley	1.20	Czar	1.35	Gorman	2.25	Longview	.55
Big Fish Lake	1.80			Grand Centre	2.10	Looma	1.65
Big Valley	1.00			Granum	.25	Loughheed	1.35
Bindloss	.85	Dakin	2.10	Grassland	2.25	Lunnford	1.95
Blackie	.45	Dapp	1.95	Grassy Lake	.35	Luscar	1.95
Blairmore	.45	Davis	1.95	Green Court	1.95		
Bloomsbury	1.95	Daysland	1.35	Gull Lake	1.20		
Blue Ridge	1.95	Deep Creek	2.25	Gunn	1.80		
Bon Accord	1.80	Delburne	1.10				
Bonnyville	1.95	Delia	.85	Halkirk	1.10	Mackay	1.80
Bordenave	1.95	Derwent	1.80	Hanna	.85	Macleod	.20
Bow Island	.45	Denville	1.65	Hardisty	1.35	Magnolia	1.80
Bowden	1.00	Didsbury	.90	Hay Lakes	1.50	Magrath	.15
Bowell	.55	Donalda	1.20	Heaton Moor	1.95	Mallaig	1.95
Bowmantown	.70	Donatville	1.80	Heinsburg	1.80	Ma-Me-O Beach	1.50
Boyle	2.10	Doucette	.75	Heisler	1.35	Manly Highway	1.65
Boyne Lake	1.95	Drumheller	.55	Hemaruka	1.00	Manola	1.95
Bragg Creek	.75	Duchess	.55	Hespero	1.20	Manville	1.65
Brant	.45	Duclos	1.95	Highridge	1.95	Manyberries	.65
Breton	1.50	Durlingville	2.10	High River	.50	Markerville	1.10
Brooks	.45	Duvernay	1.80	Hilda	.85	Mayerthorpe	1.95
Brosseau	1.80			Hilliard	1.65	McLaughlin	1.65
Bruce	1.50	Eastbourne	1.95	Hillsdale	1.20	Meadowview	1.95
Buffalo	.75	Eastburg	1.95	Holden	1.50	Meanook	2.10
Bulwark	1.15	East Coulee	.70	Holmes Crossing	2.10	Medicine Hat	.65
Burdett	.40	Echoville	1.80	Hughenden	1.35	Meeting Creek	1.35
Busby	1.80	Eckville	1.20	Hussar	.60	Mellowdale	1.95
Byemoor	1.00	Edberg	1.35	Hylo	2.10	Mercoal	1.95
		Edgerton	1.50			Metiskow	1.35
		Edmonton	1.65			Michichi	.80
Cadomin	1.95	Edmonton Beach	1.65			Milk River	.35
Calahoo	1.80	Edson	1.95	Idlesleigh	.65	Millet	1.50
Calgary	.70	Edward	1.95	Innisfail	1.05	Millcent	.55
Calmar	1.50	Egremont	1.80	Innisfree	1.65	Milo	.40
Cambria	.75	Eladesor	.75	Irma	1.50	Minburn	1.65
Camp Creek	1.95	Elk Point	1.80	Iron Springs	.15	Mirror	1.20
Canrose	1.50	Eliscott	2.10	Irricana	.75	Mission	2.25
Canmore	.90	Elora	1.00	Irvine	.75	Morecambe	1.80
				Islay	1.65	Morinville	1.80
						Morrin	.85

TO	Station- to-Station Day Rate 3 Mins.	TO	Station- to-Station Day Rate 3 Mins.	TO	Station- to-Station Day Rate 3 Mins.	TO	Station- to-Station Day Rate 3 Mins.
	\$ c		\$ c		\$ c		\$ c
Mountain Park	1.80	Penhold	1.10	Saddle Lake	1.80	Tofield	1.65
Mulhurst	1.50	Perryvale	2.10	Sangudo	1.95	Trochu	.90
Mundare	1.65	Pickardville	1.95	Saunders	1.50	Turner Valley	.60
Munson	.80	Picture Butte	.10	Schuler	.80	Two Hills	1.80
Musidora	1.80	Pincher Creek	.35	Scollard	.95		
Myrnam	1.80	Plains	1.95	Scotfield	.90		
		Plamondon	2.25	Seba	1.80	Vale	.75
Naco	1.00	Pollockville	.70	Sedalia	1.00	Vegreville	1.65
Nanton	.40	Ponoka	1.35	Sedgewick	1.35	Venice	2.10
Neerlandia	2.10	Princess	.55	Shandro	1.80	Vermilion	1.65
Nemiscam	.45	Provost	1.35	Sheerness	.85	Veteran	1.10
Nestow	1.95			Shoal Creek	1.95	Viking	1.50
New Bridgen	1.05	Radway	1.80	Sibbald	1.00	Vilna	1.95
Newbrook	1.95	Rainier	.40	Silver Bay	1.50	Vimy	1.95
New Dayton	.20	Ray	1.80	Sion	1.80	Vulcan	.35
New Sarepta	1.50	Raymond	.15	Skiff	.35		
Niton	1.95	Redcliff	.60	Smoky Lake	1.95	Wabamun	1.80
Nobleford	.15	Red Deer	1.15	South Cooking Lake	1.65	Wainwright	1.50
Noral	2.10	Redwater	1.80	Spedden	1.95	Wake-Shyre Lodge	.75
Nor buck	1.50	Retlaw	.25	Standard	.65	Walsh	.80
Nordeg	1.50	Richards	2.10	Stanger	1.80	Wapta Camp	1.45
North Cooking Lake	1.65	Richdale	.90	Stanmore	.90	Wardlow	.65
Northville	1.80	Rife	1.95	Stavely	.35	Warner	.30
		Rimbey	1.35	Sterco	1.80	Warspite	1.95
Okotoks	.55	Rochester	1.95	Stettler	1.15	Waskatenau	1.95
Olds	.95	Rochfort	1.95	Steveville	.60	Waterton Park	.45
Onoway	1.80	Rockyford	.70	Stony Plain	1.65	Wayne	.75
Opal	1.80	Rocky Mountain House	1.35	Strathmore	.60	Westerose	1.50
Orion	.60	Rosebud	.70	Strome	1.35	Westlock	1.95
Owlseye	1.95	Rose Lynn	.80	Suffield	.55	Wetaskiwin	1.50
Oyen	.95	Rosevear	1.95	Sunnynook	.75	White Court	2.10
		Ross	1.50	Sweetgrass, Mont.	.40	Whitla	.50
		Rossington	1.95	Sylvan Lake	1.15	Wildwood	1.80
		Rowley	.90			Willingdon	1.80
		Royalties	.55	Taber	.25	Willow Creek	.75
		Rumsey	.90	Tawatinaw	1.95	Winfield	1.50
		Rush Lake	.70	Therien	1.95	Winnifred	.50
		Ryley	1.50	Thorhild	1.95	Wolf Creek	1.95
				Thorsby	1.50		
		St. Albert	1.65	Three Hills	.85	Yeoford	1.50
		St. Lina	1.95	Tilley	.50	Yoho Camp	1.50
		St. Paul	1.95	Tipperary	1.95	Youngstown	.90
		St. Vincent	1.95				
Pashley	.70						
Patricia	.55						
Paulus	1.65						
Peers	1.95						
Pembridge	1.95						
Pemukan	1.15						
Pendryl	1.50						

In addition to the points on pages 8 and 9 Long Distance Connection may be had also with the following places in Alberta, rates for which can be obtained by calling "Long Distance":—

ALBERTA POINTS

Acadia Valley	Beaver Heights	Bremner	Clearview	Dobson
Acheson	Beaver Hills	Bretona	Clover Bar	Dodds
Adkins	Beaver Lake	Brightview	Cluny	Dog Pound
Aerial	Beaver Mines	Britain	Clymont	Doondale
Aetna	Beazer	Brocket	Coaldale	Dorenee
Agricola	Beddington	Brooksley	Coalhurst	Doris
Albion Ridge	Beiseker	Brownfield	Coleman	Dorothy
Aldersyde	Bellevue	Brownlow's Landing	Colinton	Dowling
Alice Lake	Belvedere	Broxburn	Commerce	Downing
Allerston	Bennett	Bruderheim	Comrey	Drayton Valley
Allingham	Benton	Buffalo Head Ranch	Conjuring Creek	Duagh
Amisk	Berry Moor	Buffalo View	Connaught	Duffield
Angle Lake	Beverly	Burford	Copeville	Duhamel
Angus Ridge	Beynon	Burmis	Cornucopia	Dunmore
Ankerton	Bircham	Burnt Lake	Countess	Dunshalt
Anzac	Birdsholm	Cadogan	Cousins	Dunstable
Ardenode	Bismark	Calling Lake	Crowfoot	
Ardenville	Bittern Lake	Calverly	Cummings	Eagle Hill
Ardley	Black Diamond	Campbell Lake	Custer	Earlie
Ardrossan	Blackfalds	Campsie		Earling
Armena	Blackfoot	Cappon	Dahmer	Earlville
Arneson	Blondheim	Cardiff	Dalemead	Eastervale
Asker	Bluffton	Carlton Hill	Dalroy	Eden Valley
Avalon	Bodo	Caroline	Darwell	Edison
Azure	Boian	Carolside	Davisburg	Edwell
	Bonlea	Carseland	Delacour	Elk Island
Baintree	Bonnar	Cassils	Del Bonita	Elk Island Park
Balmoral	Borradaile	Cayley	Demay	Elkton
Balzac	Botha	Chailey	Desjarlais	Elkwater Lake
Bardo	Bottrel	Chancellor	Dewberry	Ellerslie
Barnwell	Bouyant	Cheadle	De Winton	Enchant
Bathgate	Bow City	Chesterwold	Diamond City	Ensign
Battle	Bowness Golf Club	Chigwell	Dickson	Entice
Battle Bend	Bowness Park	Chin	Dina	Equity
Battleview	Bradshaw	Clandonald	Dinant	Erskine
Beaumont		Clarinda	Dinton	Everett

ALBERTA POINTS—Continued

<p> Ewelme Excel Eyemore Fabyan Fairacres Fairbank Fairfield Fairydell Faith Falun Farming Valley Farrow Federal Fedorah Fenn Ferrybank Fishburn Fleet Florann Foreman Forest Lawn Forshee Four Nine Frank Frankburg Freeman River Gahern Garden Plain Garred Gartley Gem Ghost Pine Gibbons Gilby Gillen Gilpin Gladys Glenbow Glenford Golden Spike Good Hope Good Luck Gopher Head Grainger Graminia Grand Valley Green Glade Greenshields Griebach Grosmont Groton Gwynne Hackett Haight Hairy Hill Hamlin Handhills Hardieville Harmattan Hartell Hart Siding Hastings Coulee Haven Haynes Hayter Hazeldine Heath Heath Creek Heather Brae Heatherdown Helmsdale Herronton Hesketh Hetherington Highfield </p>	<p> Highland View Hillcrest Hill End Hillspring Hoadley Hobbema Homeglen Horsehaven Horseshoe Lake Hubalta Hunterville Hutton Huxley Indus Inga Ingleton Inverlake Iola Irwinville Jeffrey Joffre Josephburg Jumping Pound Kahwin Kaleland Kathryn Kavanagh Kelsey Keoma Kessler Kevisville Kew Kilbourn Kimball Kingman Kippenville Kirkcaldy Knee Hill Valley Laconia Lake Demay Lake Isle Lake Minnewanka Lake View Lamoureux Landonville Lanfine Lavesta Lea Park Leavitt Leedale Leeshore Lewisville Liberty Lindbrook Lineham Livingston Lochend Lockhart Long Coulee Lousana Lowe Loyalist Lucky Strike Lundbreck Lyalta Madden Majorville Makepeace Malmo Manfred Maple Leaf Martins </p>	<p> Marwayne Masinasin Maughan Maunsell Maybutt Mayton Mazeppa McDonaldville Meadowbank Meadow Creek Mearns Menaik Merna Mewassin Midland Midnapore Millarville Miller Milnerton Monarch Monitor Morgan Morley Morningside Mosside Mossleigh Mound Mountain View Murray Valley Nacmine Nakamun Namaka Namao Neighborview Nevis Newcastle New Lindsay New Norway New Oxley Nightingale Nilrem Nisbet Nisku Norfolk Siding Northbank Northern Valley Northleigh Norton Ogden Ohaton Olin Creek Olson Coulee O'Mara Orkney Orton Ouelletteville Oxville Pakan Paradise Valley Parkland Park View Partridge Hill Passburg Peacock Pearce Pearson Peat Pekisko Pendant d'Oreille Perbeck Phillips Pibroch Pincher Station Pine Lake Pirmez Creek </p>	<p> Pleasant View Poe Poplar Ridge Poplar Site Pretty Hill Priddis Princeton Puffer Purple Springs Quarrel Queenstown Raley Ranfurly Raven Redland Red Lodge Red Raven Red Willow Reid Hill Reist Rexboro Ribstone Rio Alto Rivercourse Riviere Qui Barre Rockelling Bay Rocky Rapids Rodino Rolling Green Rolling Hills Rosalind Rosedale Roselea Rosemary Rosenheim Rosenroll Ross Creek Rosyth Round Hill Rusylvia St. Kilda St. Michael Saltaux Sammons Sarcee Sather Scandia Scapa Scotstoun Seaforth Seebe Sexton Creek Sharples Shaughnessy Sheep Creek Shepard Shepard Airport Shonts Shouldice Sidcup Silver Heights Silver Lake Simons Valley Skaro Soda Lake Southesk Sponden Springbank Spring Coulee Springdale Spring Lake Spring Point Springvale Spruce Grove Stampede </p>	<p> Stand Off Staplehurst Star Sterlingville Stirling Stobart Stockland Strand Strangmuir Streamstown Suffield - Experimental Station Sugar Bowl Sullivan Lake Sulphur Springs Summerview Sundre Sunnydale Sunnyslope Swallow Talbot Taylorville Tees Telfordville Tempest Thelma Throne Tindastoll Tollard Tomahawk Tongue Creek Torrington Travers Tudor Turin Twin Butte Twin Lakes Twining Ulster Vauxhall Victoria Viewpoint Villeneuve Volmer Wahstao Waltross Wanda Warden Warwick Waterglen Water Valley Watts Wealthy Welling Wellsdale Westcott Westward Ho Whisky Gap Whitewood Lake Whitford Wildmere Willowdale Willowlea Wilson Siding Wilton Park Wimborne Winterburn Woodhouse Wood River Woolford Wostok Wrentham Yarfield Yorkville </p>
---	--	--	---	---

For Long Distance Rates See Pages 8 to 11

**Buy War Savings Certificates Regularly, and
 Advertise in the Telephone Directory**

Rates to Certain Points in Canada and the United States of America

Rates to points not listed below may be obtained by calling Long Distance

FROM LETHBRIDGE

TO	STATION-TO-STATION				PERSON-TO-PERSON			
	DAY (Exc. SUN.)		NIGHT and SUNDAY		DAY (Exc. SUN.)		NIGHT and SUNDAY	
	3 Mins.	Add. Min.	3 Mins.	Add. Min.	3 Mins.	Add. Min.	3 Mins.	Add. Min.
AKRON, OHIO	\$3.50	\$1.15	\$2.50	\$.80	\$4.50	\$1.15	\$3.50	\$.80
BALTIMORE, MD.	4.00	1.30	3.00	1.00	5.00	1.30	4.00	1.00
BOISE, IDAHO	1.50	.50	.95	.30	2.00	.50	1.45	.30
BOSTON, MASS.	4.25	1.40	3.25	1.05	5.25	1.40	4.25	1.05
BRANDON, MAN.	2.00	.65	1.20	.40	2.65	.65	1.80	.40
BROOKLYN, N.Y.	4.00	1.30	3.00	1.00	5.00	1.30	4.00	1.00
BUFFALO, N.Y.	3.75	1.25	2.75	.90	4.75	1.25	3.75	.90
BUTTE, MONT.	1.05	.35	.65	.20	1.40	.35	1.00	.20
CHICAGO, ILL.	3.25	1.05	2.25	.75	4.25	1.05	3.25	.75
CINCINNATI, OHIO	3.50	1.15	2.50	.80	4.50	1.15	3.50	.80
CLEVELAND, OHIO	3.50	1.15	2.50	.80	4.50	1.15	3.50	.80
DENVER, COLO.	2.10	.70	1.40	.45	2.80	.70	2.10	.45
DETROIT, MICH.	3.50	1.15	2.50	.80	4.50	1.15	3.50	.80
DULUTH, MINN.	2.50	.80	1.65	.55	3.35	.80	2.50	.55
GREAT FALLS, MONT.	.80	.25	.50	.15	1.10	.25	.80	.15
HALIFAX, N.S.	6.25	2.05	3.75	1.25	8.50	2.05	5.75	1.25
HELENA, MONT.	.95	.30	.60	.20	1.30	.30	.95	.20
KANSAS CITY, MO.	2.80	.90	1.85	.60	3.75	.90	2.80	.60
LOS ANGELES, CAL.	2.70	.90	1.80	.60	3.60	.90	2.70	.60
MILWAUKEE, WIS.	3.00	1.00	2.00	.65	4.00	1.00	3.00	.65
MINNEAPOLIS, MINN.	2.50	.80	1.65	.55	3.35	.80	2.50	.55
MONTREAL, QUE.	5.00	1.65	3.00	1.00	6.75	1.65	4.50	1.00
NEW YORK, N.Y.	4.00	1.30	3.00	1.00	5.00	1.30	4.00	1.00
OAKLAND, CAL.	2.40	.80	1.60	.50	3.20	.80	2.40	.50
OMAHA, NEB.	2.50	.80	1.65	.55	3.35	.80	2.50	.55
OTTAWA, ONT.	4.75	1.55	2.75	.90	6.50	1.55	4.00	.90
PHILADELPHIA, PA.	4.00	1.30	3.00	1.00	5.00	1.30	4.00	1.00
PITTSBURG, PA.	3.75	1.25	2.75	.90	4.75	1.25	3.75	.90
PORTLAND, ORE.	1.70	.55	1.15	.35	2.25	.55	1.70	.35
REGINA, SASK.	2.25	.75	2.80	.90
SAINT JOHN, N.B.	5.75	1.90	3.50	1.15	7.75	1.90	5.25	1.15
ST. PAUL, MINN.	2.50	.80	1.65	.55	3.35	.80	2.50	.55
SALT LAKE CITY, UTAH	1.90	.60	1.25	.40	2.55	.60	1.90	.40
SAN FRANCISCO, CAL.	2.40	.80	1.60	.50	3.20	.80	2.40	.50
SASKATOON, SASK.	1.95	.65	2.40	.80
SEATTLE, WASH.	1.55	.50	1.00	.30	2.05	.50	1.50	.30
SHELBY, MONT.	.55	.15	.35	.10	.80	.15	.60	.10
SPOKANE, WASH.	1.05	.35	.65	.20	1.40	.35	1.00	.20
TACOMA, WASH.	1.55	.50	1.00	.30	2.05	.50	1.50	.30
TORONTO, ONT.	4.50	1.50	2.75	.90	6.00	1.50	4.00	.90
VANCOUVER, B.C.	2.70	.90	1.30	.40	3.25	.90	2.30	.40
VICTORIA, B.C.	3.10	1.00	1.50	.50	3.75	1.00	2.65	.50
WASHINGTON, D.C.	4.00	1.30	3.00	1.00	5.00	1.30	4.00	1.00
WINNIPEG, MAN.	2.40	.80	1.40	.45	3.20	.80	2.20	.45

Night rates apply from 7.00 p.m. to 4.30 a.m.

To secure Evening or Night Rates on Station-to-Station calls to points in Saskatchewan, Call the Operator.

Person-to-Person Night and Sunday rates do not apply on calls to points in Saskatchewan.

LETHBRIDGE

INFORMATION

9 2

 For Information Regarding New Subscribers,
and Changes of Telephone Numbers

Dial 92

LONG DISTANCE

0

 To report Unsatisfactory Long Distance
Service

Dial 98 and ask for Chief Operator.

TROUBLE

9 3

 To Report Telephone Out of Order and
Unsatisfactory Local Service

Dial 93

STEVE'S
TAXI 4058
 24-HOUR SERVICE

A

A B Confectionery Lee Wong 328 13th St N	3638
Achtem John res 1511 7th Ave S	2954
Adams Claudette res 312 3rd Ave S	2671
Adamson E C res 524A 4th St S	3005
Adnitt W C res 340 19th St N	3854

ADVANCE LUMBER CO LTD

YARD OFFICE 13th St S & 2nd Ave	2063
J W Moran res 1239 9th Ave S	2459
GENERAL OFFICE 5th Ave S & 4th St	3663
N S Stoltze res 1517 7th Ave S	3320
N H Turnbull res 1404 14th Ave S	3215
T C Griffiths res 1110 7th Ave S	2858
Afaganis Alex res 912 7th Ave S	2282
Afaganis M res 533 5th St S	3471
Ainscough W G res 508 13th St S	2441
Aird Jas res 1304 6th Ave S	2083
Airway Store N Alva Prop	91-4133
Aita's American Cash Grocery 431 18th St N	2418
Aitken D res 1251 7th Ave S	2321
Aitken D B res River Bottom	2357
Aitken J A res 1312 4th Ave S	2259
Alberta Construction Co Capitol Theatre Bldg	2913
Night Calls W K Christensen Mgr	3557

ALBERTA GOVERNMENT—See also Provincial Govt

**ALBERTA GOVERNMENT INSUR-
ANCE OFFICE** 216 5th St S 2351

BUY
WAR SAVINGS CERTIFICATES
REGULARLY

ALBERTA GOVERNMENT
TELEPHONES General Office 808-810

4th Ave S	2234
Information regarding New Subscribers and change of Telephone Nos	92
Telephones out of order	93
Long Distance Operator	0
Chief Operator	98
R E Phillips Local Manager	2234
R E Phillips District Commercial Supt	3503
W L Shera City & District Clerk	3503
Wm Russ District Plant Supt	3375
R Harper District Traffic Supt	4221

Alberta Lumber Products Co 2018 2nd Ave S 2219

ALBERTA MEAT MARKET J Crighton

510 6th Ave S 3492

Alberta Montana Bus Lines Bus Depot 411 5 St S 2288

Alberta Motor Association

Information Bureau 306 7th St S	2793
Alberta Pacific Grain Co Ltd—Diamond City	91-3221
Alberta Pacific Grain Co Ltd—Tempest Siding	91-4023
Alberta Pacific Grain Co Ltd—Wilson Siding	91-1422
Alberta Sugar Beet Growers 4 Stafford Blk	3242
Alberta Wheat Pool—Broxburn	91-2133
Alberta Wheat Pool—Coaldale	91-2523
Alberta Wheat Pool—Tempest Siding	91-4022
Alberta Wheat Pool—Wilson Siding	91-1423

Aldous Agency & Finance Co

Insurance Collections & Accounting

109 Sherlock Bldg	3712
Alex Taxi Marquis Hotel	3545
Alexander R D res 1236 8th Ave S	3491

ALEXANDRA HOTEL 332 5th St S

Private Branch Exchange connecting all Rooms 3142

Alford E W res No 2 Fire Hall	3891
Allan Archie res Lethbridge Country Club	2527
Allan E res 707 7th Ave S	3284
Allan R T	91-2231
Allen Mrs Annie res 830 12th St-B N	4074

ALLEN DR L T Dentist 8 Rylands Blk 2165

Allen Dr L T res 1507 7th Ave S	2871
Allen T S Jr res 1407 3rd Ave N	3835
Allison R res 522 12th St-B N	3624
Allison Mrs R res 415 20th St N	2394
Allison R E res 1264 4th Ave S	3528

TED'S TERMINAL

"SMILE A MINUTE SERVICE STATION"

IMPERIAL 3 STAR & ESSO GASOLINE — MARVELUBE & MOBIL OIL MOTOR OIL

PHONE 2684
410 - 3rd AVE. S.
PHONE 2065


**BIJOU
TAXI**
2750
50c
and up

W. HOSELTON
Prop.

Almle E M res 311 15th St S	3707
ALVAU N Herbalist 806 2nd Ave S	2074
Anderson A C res 519 13th St S	3975
Anderson C T res 632 12th St S	4316
Anderson Ed C res 1248 4th Ave S	3775
Anderson D L	91-2115
Anderson Miss H M res 3 Galt Manor	2413
Anderson M E res 201 2nd Ave S	4423
Anderson N J res 619 12th St S	4250
Anderson N J	91-1531
Anderson & Smith Grading Contrs Lethbridge	2777
Anderson W D Sr res 941 10th St S	2624
Anderson W Del res 1237 7th Ave S	2440
Andrew R G res 1243 8th Ave-A S	3841
Andrews W	91-1031
Androkovich A	91-1622
Angele Mrs C res 424 9th St S	2763
Arcade Billiard & Cigar Store 325 5th St S	3366
Archer R G res 139 15th St N	2469
Archibald D C res 3-519 7th St S	2923
Archibald E J res 31 Victoria Mansions	4428
Arkininstall C res 1624 3rd Ave N	3329

ARLINGTON HOTEL A E Dupen Mgr

1st Ave & 4th St S	2278
Armstrong T B res 527 13th St S	3229
Armstrong W J res 622 6th Ave S	3301
Army & Navy Veterans Club 517 5th Ave S	3846
Arnold Mrs A M res 1610 6th Ave N	3397

ARNOLD DR H A Internal Medicine

120 McFarland Bldg	3171
Dr H A Arnold res 635 11th St S	4042
Arnold T Jr res 330 19th St N	2820
Arnsdorf Mrs R res 303 7th Ave-A S	3826
Art Signs J Patey Majestic Theatre Bldg	2203

ARTIC OIL SALES LTD

1211 2nd Ave S	3496
Artic Service Station L Coyne 3 Ave & 13 St S	4162
Artic Service Stn E Brennan—Shaughnessy	91-3124
Ascroft Chas res 246 15th St N	3318
Ascroft Mrs T res 528 12th St S	4023
Ashcroft P H res 712 3rd St S	3746

ASHDOWN MARSHALL A Optometrist

407 5th St S	4222
C A Palmer Manager res	4077
Asplin A res 1703 7th Ave S	2222
Asplund C O Leth Cent Fdrs Assn Stockyards	2891
Asplund C O res Parkside Drive	4448
Atkins R H res 1707 5th Ave N	2703
Atkinson G M res 1204 7th Ave S	4438
Atkinson J M res 1245 5th Ave-A S	3954

GARRETT FURRIERS
FURS OF QUALITY

AT

POPULAR PRICES

 REMODELING - REPAIRING - RELINING
COLD STORAGE - CLEANING - GLAZING

HULL BLOCK Phone 3812

ATLAS LUMBER CO LTD Lumber &

Builders' Supplies 3rd Ave & 16th St S	2384
J E McCorkle Manager res	4238

ATTRIDGE & MILLER LTD Machinists

1116 2nd Ave S	2323
G R Miller res 1416 6th Ave S	4390
Night Calls	2680

Austin H res 305 7th Ave S	2028
----------------------------	------

AUTOMOTIVE SUPPLY CO

Storage Batteries 205 10th St S	3848
Earl L Schoof Mgr res 207 10th St S	2011
Avenue Shoes McFarland Bldg	2760

B

B C Fruit Grocers & Confrs 906 3rd Ave S	2033
Baalim A G res 630 11th St S	3546

BAALIM BUILDING AGENCIES

317 7th St S	2432
--------------	------

BAALIM MOTOR CO LTD 7th St S

Parts & Accessories	2416
Manager & Salesmen	2621
Body Shop & Service Department	4055
General Office and Accountant	3436

BAALIM WHOLESALE DISTRIBUTORS 7th St S

4353	
Bach A res 301 7th Ave S	4440
Bachman Adolph res 721 12th St-A S	2110
Bailey Margaret res 927 9th St S	2747
Bain Isobel J res 12 Patterson Court	3585
Baines A E res 304 7th Ave-A S	3719
Baines C D res 423 11th St S	2875
Baines E C res 1316 6th Ave S	3901
Baines Hector res 284B 7th Ave-A S	4150



PHONE 2904

STORAGE

**BIJOU
TAXI**
2750
50c
and up

W. HOSELTON
Prop.



BATTERY WORKS

Distributors of New Duro-Lite Farm Lighting Batteries

■ NEW AND FACTORY REBUILT CAR BATTERIES ■
WIND CHARGERS and LIGHT-PLANT BATTERIES

Cor. 2nd Ave. & 10th St. S., Lethbridge

PHONE 3848

STEVE'S
TAXI 4058
24-HOUR SERVICE

Baird R R res 324 13th St S 2195

BAIRD'S SHOES & LEATHER

GOODS 306 5th St S 3764

R R Baird Mgr res 2195

Baker Philip 91-1124

Baker Roscoe 91-1114

Balcovske W res 722 12th St-A S 4192

Balderson Blanche res 1317 6th Ave S 4018

Balderson Mrs Pauline res 603 10th St S 2029

Baldwin L Ambris res 804 7th Ave S 2552

Bank of Montreal 522 3rd Ave S 3446

Manager's Office J C Downing 2526

Bank of Nova Scotia The 3rd Ave S 2711

Bannerman J res 1031 12th St-B S 2851

BANNERMAN MOTORS Nash Cars &

Kelvinator Refrigerators 816 4th Ave S 2045

Bannerman N Groo res 3464

Baptiste C L res 124 19th St N 3837

Baptiste V 91-3031

Barbour J A res 1222 5th Ave S 3970

Barby C res 1611 3rd Ave N 3169

Barclay R W res 1249 5th Ave S 2294

Barnsley A res 629 11th St S 2267

Barnsley Arthur Real Estate 416 6th St S 2767

Barr James res 3 Strathcona Court 2350

Barratt Horace res 1212 8th Ave S 3998

Barrowman Robert res 283 7th Ave-A S 2147

Bartlett L G 91-1424

Bartlett W E res 520 12th St S 3927

Barton S res 20 Victoria Mansions 3743

Bass W H res 1003 8th Ave S 2547

Basson Fred res 709 7th Ave S 3467

Bateman M res 302 12th St S 4216

Bates A B 91-4134

Bates T G res 275 7th Ave-A S 2086

Batsford Mrs C D res 915 9th St S 2641

Batsford Sidney T res 412 7th Ave S 3560

BATTERY WORKS 205 10th St S 3848

Batty A D 91-1042

Bawden Miss res 1255 4th Ave S 2158

Baxter Arthur D res 528 6th St S 3499

BAXTER GEO H & SON Plbg Htg &

Gas Ftg 968 10th St S 3830

BAY SUPER SERVICE STATION

Hudson's Bay Bldg 3580

Beard Fred C res 1722 2nd Ave-A N 4359

Beasley Mrs A M res 412 9th St S 2211

Beattie W S Barrs & Solr 10 Alberta Blk 3237

Beattie W S res 1262 4th Ave S 3027

BEATTY BROS LTD

Washers Ironers & Cleaners 409 5th St S 4054

Beatty D L res 6 Tudor Manor 4463

BEAUMONT ARTHUR K.C. Barrister

& Solicitor etc 1262 6th Ave-A S 2118

Beaumont E res 425 12th St N 2780

BECKER LUMBER CO LTD

310 7th St S Grd Flr Sherlock Bldg 2386

Arthur Duff res 833 12th St S 3895

Beddington F res 716 14th St N 3459

Bedster Arthur res 12th Ave & 7th St-A S 2907

Bedwell Alfred E res 1 Macleod Trail 2582

Begoski A 91-2111

Belford V res 1314 6th Ave S 2570

Bell George A res 517 12th St S 3441

Bellchambers B H res 1506 7th Ave S 4324

Belzberg Jack res 1257 7th Ave S 2066

Benedek Bert res 504 6th Ave S 3542

Benjamin Raymond B res 541 13th St S 2227

Bennett Farm R P Anderson Mgr 91-1714

Benson Clifford L 91-3214

Benson Wm S res 1511 6th Ave S 3751

BERMAC CYCLE & RADIO CO

408 6th St S 3232

Bernard J Nelson res 520 12th St-B N 3713

Bernard J R res 423 12th St-A N 2594

Berry Mrs H res 406 4th St S 2558

Berte John res 907 7th St N 2803

Berte S J res 1124 8th St N 4119

Big Cone Super-Rich Ice Cream Store The

255 13th St N 2530

BIGELOW FOWLER & GORDON DRS

Physicians & Surgeons Hull Blk 2622

Dr J K Bigelow res 418 13th St S 3885

Dr Douglas B Fowler res 1403 5th Ave S 4356

Dr W H A Gordon res 542 8th St S 4287

Shaughnessy Office 91-3121

Bigelow Dr J K res 418 13th St S 3885

BIJOU TAXI AND U DRIVE CARS

W Hoselton 416 4th Ave S 2750

Bikman Sam res 534 6th St S 2348

BILL'S TAXI 210A 5th St S 2224

Billigmeier J J res 415 8th St S 3165

Binning Mrs Ellen res 113 16th St N 3862

Binns J E D res 618 7th Ave S 2122

Birch Earl res 423A 14th St S 2912

Bircumshaw J B res 220 14th St N 4445

Birrell Walter res 422 12th St-B N 2560

Bishop Capt Rev C P res 829 12th St S 3950

Bishop Mrs E A res 321 19th St N 4313

Bishop T 91-1431

Bitango Matt 91-1815





Purity Milk is Pasteurized for Your Protection

ASK FOR THESE PURITY PRODUCTS TOO

CREAMO ■ BUTTER ■ BUTTERMILK ■ COTTAGE CHEESE

PURITY DAIRY - - - Phone 4124

5th Avenue South

Lethbridge

Black Gordon res 1245 8th Ave S	4347
Black John H res 17 Devon Court	4009
Blackberg A L res Morris Blk 3rd Ave S	4418
Blackbourne L H res 1310 6th Ave S	4102
Blacker Mrs Geo res 302 6th Ave-A S	3117
Blackert W P res 1261 8th Ave S	2502
Blackford Mrs M B res 1212 3rd Ave-A S	2958

BLACKFORD PRESS M B Blackford

rear Woolworth's Store 5th St S	3287
Blair Ken res 1324 7th Ave S	3448
Blair W E res 943 9th St S	2714
Blais A E res 306 7th Ave-A S	3759
Blais A W res 934 10th St S	3130
Blenner-Hassett Lon res 1213A 3rd Ave S	3035
Blenner-Hassett W A res 1214 3rd Ave S	2634
Bletcher Mrs B res 9 Tudor Manor	2947
Bletcher Miss H res 504 7th Ave S	2020
Blount W L res 323 7th Ave S	3408
Blythe D A res 1507 4th Ave S	2809
Board of Trade Office Board of Trade Bldg	2012
Boas W T res 728 8th St S	3962

BODARD ADJUSTMENT BUREAU

S J Bodard Mgr Bank of Commerce Bldg	3211
Bodard Stuart J res 1221 6th Ave S	3214
Bohner Geo	91-2241
Bolen Edward res Cor 14th Ave & 20th St S	3872
Bond Frank	91-4024
Boston Hat Works & Shoe Shine 327a 5th St S	2961
Bostrom Miss E Beauty Shop 10 Rylands Blk	3575
Botsford Fred res 1258 6th Ave-A S	4085
Botterill N res 947 13th St S	4429
Boulton C W res 1229 7th Ave S	3481
Boulton H	91-1521
Bourgett G res 319 7th Ave S	2521
Bowden F	91-1723
Bowers W	91-3422

BOWMAN C B AGENCY LTD

Real Estate & Insurance Acadia Bldg	2325
S A Wallace res	3788
Bowman Mrs R F Patrick res 511 5th St S	3568
Bow On Tong Co 316 2nd Ave S	3675
Bowron J E res 126 18th St N	4382
Boyce W Auctioneer 1253 9th Ave S	2260
Boyd H res 544 12th St S	2410
Boyden P	91-1313
Boyer S K res 606 11th St S	3010
Boyse Harry res 401 19th St N	4138
Bradford Fred res 406 19th St N	3483
Bradford J J Live Stock Dlr Stock Yards	2915
Bradford J J res 1238 6th Ave S	2698
Bradford J R res 3 Maple Court	3482
Bradley H B res 1251 8th Ave S	4184
Bradley N H Engr Prov Public Wks 216 5th St S	2225
N H Bradley res 631 14th St S	2925
Brander A I res Riverview	2201
Brandley Marian res 704 13th St S	3613
Breckenridge N J res 613 8th Ave S	2157
Brenton C J res 1217 7th Ave S	2683
Brindley J	91-1613
Brink E A res 635 10th St S	3662
Brite Spot The 712 3rd Ave S	3068

GARRETT FURRIERS FURS OF QUALITY

AT
POPULAR PRICES

REMODELING REPAIRING RELINING
COLD STORAGE CLEANING GLAZING

HULL BLOCK - Phone 3812

BRITISH AMERICAN OIL CO LTD

THE 17th St & 2nd Ave S	2585
C G Murray Branch Mgr res 533 11th St S	3033
J Dogterom Distributor res 945 7th St S	3031
Night Calls after 6 pm Sundays & Holidays	3033

BRITISH CANADIAN FINANCE LTD

H D Rood Mgr 315 6th St S	2843
---------------------------	------

BRITISH CANADIAN TRUST CO

315 6th St S	2843
H D Rood Manager res	2837
Brocklebank Frank res 318 12th St S	3781

BRODER CANNING CO 1 Ave & 23 St N

General Office & Manager	2517
Shipping & Employment	2587
Brodie Mrs J res 648 11th St	2956
Brodie W S res 714 10th St S	3280

BROOKS' PERMANENT WAVE

SALON Dorothy M Erickson McFarland Bldg	4262
Brower Ogden res 1259 9th Ave S	2048
Brown C F res 1505 3rd Ave N	2583
Brown G S res 313 13th St S	3798
Brown Geo res 420 8th St S	3018
Brown Dr T E Phys & Surg 329 7th St S	3505
Dr T E Brown res 604 15th St S	2276
Brown T M res 502 5th Ave S	2032
Brown V J res 717 11th St S	4358
Brown's Musical Supplies 303 6th St S	2272
Brownrigg D J res 622 10th St S	3277
Bruce Mrs H H Travellers' Aid 204 9th St S	3723
Bruchet G res 414 12th St-A S	3957

BRUCHET LEONARD

Painter & Paperhanger 329 11th St S	3706
Brumwell J res 1228 3rd Ave S	4109
Brunner W res 318 6th Ave-A S	3929
Bryan S res 324 15th St S	3939
Bryans Dr W E Phys & Surg 329 7th St S	3501
Dr W E Bryans res 1224 6th Ave-A S	2922
Bryant Chas res 635 8th St S	3984
Buchan R D res 1409 7th Ave S	2572
Buchanan R J res 524 13th St S	2804
Buchanan Stanley A res 938 13th St S	3352
Buchanan W A res 1404 4th Ave S	3508

BUDGET BEAUTY SHOP Alberta Blk

Bugler J res 638 12th St S	3415
Bull A R res 631 13th St S	3493
Bullis A H res 1408 7th Ave S	4073
Burgess J B	91-2832
Burgmann Hall 418 13th St N	3882
Burgoyne E res 217 3rd Ave S	3664
Burke C res 515A 6th St S	2488
Burkitt Mrs J C res 531 8th St S	2827

CHOP SUEYSpecial
CHOW MEIN210 Centre St.
CALGARY, Alta.**N. NEW CHINA C.**

新中國酒樓

Dine & DanceBest
CHICKEN NOODLE

Phone R1884

**STEVE'S
TAXI 4058**
24-HOUR SERVICE

Burnap, A J res 272 7th Ave S	3363
Burnard Mrs E res 307 7th Ave S	4263
Burnett John res 635 13th St S	4479
Burnett Thomas M res 622A 6th Ave S	3317
Burnham H G res 439 18th St N	3780
Burns A res 543 16th St N	3617

BURNS & CO LIMITED

Office & Produce Dept 610 3rd Ave S	2388
H C Tom res	3123
Retail Market Hill Blk 4th Ave S	3412
Livestock Yards near Exhibition Grounds	3831

Burns D W res 1250 14th Ave N	2528
Burns R M res C - Rosedale Apts	2661
Burr Leland	91-1222
Burritt G H res 1255 5th Ave-A S	3531
Burroughs Evelyn res 612 7th St S	2349
Burton C Eddie res 612 13th St S	4345
Burton J res 722 15th St S	3918

BUS DEPOT 411 5th St S	2288
Bushell J P res 6 Patterson Court	2924

BUZZ SHOP Vulcanizing 311 8th St S	3932
William Knox Mgr res	3868

C

C J O C Broadcasting Station Marquis Hotel	3161
Private Branch Exchange connecting all Depts	
N Botterill Manager res 947 13th St S	4429
R V Staples Commercial Mgr res 1253 8 Ave S	4114
Cahill A T res 1 Riverview Apts	4442
Cain A H res 538 16th St N	4269

CAIRNS DR EDMUND Specialist in	
Diseases of Children 120 McFarland Bldg	3171
Dr Edmund Cairns res 951 13th St S	3311
Cairns T M res 1-1228 6th Ave S	2822
Calder F res 833 15th St S	3753

CALGARY BREWING & MALTING CO LTD Rear 314 11th St S	2488
--	------

CALGARY POWER CO LTD	
415 3rd Ave S	4267
P E Kirkpatrick Dist Supervisor res	3825
E Leeds Local Manager res	3824



Jones
LONG DISTANCE MOVING
PHONE 2904
STORAGE

Callahan C H res 646A 5th St S	4462
Cameo Cafe 323 5th St S	2485

CAMERON C E Barrister C Metcalfe Bldg	3559
Cameron Everett C res 1256 5th Ave S	4165
Cameron Hugh res 35 Victoria Mansions	4468
Cameron Miss L res 422 8th St S	4083
Cameron L & Co Milnry Ladies' Wr 312 6th St S	2850
Cameron Miss M res 4 Galt Manor	3629
Cameron Phyllis res 2 Galt Manor	3778
Cameron S K res 730 10th St S	2868

CAMPBELL BRYANS BROWN &

TUTTLE DRS Phys & Surgs 329 7th St S	
Drs Campbell & Brown	3505
Dr Bryans	3501

Campbell David G res 1217 6th Ave-A S	2830
Campbell J H res 1321 10th Ave S	4401
Campbell James M res 317 12th St S	4094
Campbell Dr P M Phys & Surg 329 7th St S	3505
Dr P M Campbell res 528 8th St S	2358
Campbell R res 928 7th St S	3519
Campbell R J res 808 7th Ave S	2229
Campbell R M res 1203 5th Ave-A S	4320
Canada Cafe Jim Yip 420 13th St N	2186
Canada Life Assurance Co Metropolitan Bldg	2816

CANADA PAINT & WALLPAPER

STORE Wholesale & Retail 327 7th St S	2513
--	------

CANADIAN BAKERIES LTD

Cor 8th St & 7th Ave S	3266
O W Clarke Mgr res	3034

Canadian Bank of Commerce The 4 Av & 7 St S	2414
Manager's Office F L Rhodes	3461
Canadian Confectionery Jim Chow 403 5th St S	3383

CANADIAN FREIGHTWAYS

1250 1st Ave S	2944
K B Owen res 293 7th Ave S	2945
Canadian Government Elevator General Office	4380
Elevator	4383

CANADIAN JOHNS-MANVILLE CO LTD

Northern Asbestos Products Ltd Alberta Distbrs	
1266 8th Ave S	3279

Canadian Johns-Manville Co Ltd	
Yates Lumber Yards Dealers	
3rd Ave & 17th St S	3516
Canadian Legion B E S L 1st Ave & 9th St S	3426

CANADIAN OIL COMPANIES LTD

17th St & 2nd Ave S	
Order Desk	3208
Warehouse Supt J G Keys	3208
City Salesman E Gasser res	2715

CANADIAN PACIFIC RAILWAY

CARTAGE—PICK-UP & DELIVERY SERVICE 2565	
EXPRESS—G A Holliday Agent	
Information re Express	3434
PASSENGER	
Information re Trains and Steamships	3512
Ticket Agent H G Stretton	3512
Baggage Room	3741

(Continued on Next Page)

Your Telephone Has Gone To War



IN TODAY'S GLOBAL WAR the Telephone is playing a more important part than ever before in the history of modern warfare. In the battles that are raging in the far corners of the earth, rapidity of movement and effective striking power is only as efficient as the continued maintenance of accurate and speedy communications.

WAR HAS CREATED an unprecedented demand for telephone service. At the same time, it has diverted large quantities of telephone materials and equipment to War purposes—both in our factories and for our armed forces—with the result that it is no longer possible to satisfy all civilian demands for new installations and service.



Avoid making long distance calls of a purely social nature *Outside the Province of Alberta*. **WAR CALLS MUST COME FIRST.** Long distance facilities *Within the Province* are not yet severely restricted. We welcome your business and will endeavor to handle it with the usual promptness.

"BE BRIEF". All conversations should be brief. Long social calls may result in essential calls being delayed.

Take special care of the equipment you now enjoy. **IT CANNOT BE REPLACED.**

Consult the Directory before calling and **DO NOT** call Information until you are sure the number you want is not listed.

Face the Facts and Sacrifice for Victory!

WAR WEAPONS COME BEFORE CIVILIAN NEEDS

ALBERTA GOVERNMENT TELEPHONES

LUSTERITE

**Dial 3451 or 3452
for LUSTERITE**

— FOR YOUR CONVENIENCE —

[illegible]

DRY CLEANING DEPARTMENT
of
The Lethbridge Laundry Company
PHONES—3451 or 3452

FAT'S STEVE SMEREK TAXI 3838

24 HOUR SERVICE

CANADIAN PACIFIC RAILWAY (Continued)

OPERATING

Superintendent S R Lamb	3642
Chief Clerk D Stevenson	3642
Asst Supt's F W Nicks & C E Lister	2067
Division Master Mechanic A Hayward	2067
Assistant Chief Clerk C Jackson	2067
Division Engineer J M Campbell	3909
B & B Master and Roadmasters	3909

TELEGRAPHS—308 6th St S

Manager W R Russell	3671
---------------------	------

Messenger Errand & Distribution Service

YARD

Yardmaster—1st Ave S	3314
Roundhouse—Loco Foreman W P Crawford	3724
Car Foreman F Carney	3724
Storekeeper W H Dawson	2137

FREIGHT—13th St

Information re Incoming Freight	2154
Local Freight Agent F E Reagh	3354
Chief Clerk C C Collins	3354
Rate Clerk	3354
Shed Foreman G H Milner	2161
Car Service Clerk J E Rannard	2161
Claims Clerk S Wakeman	2161
Cashier J Ferguson	2154
Billing Staff H Chapman	2154

STOCKYARDS

Foreman G McKenzie	3390
AGENT—Coaldale	91-2431
AGENT—Coalhurst	2236

DEPARTMENT OF NATURAL RESOURCES

Irrigation Office

Supt Operation & Maintenance G S Brown	2136
Chief Clerk A W Kress	2136
Canal Supt R S Lawrence	91-2013
Drafting Room	91-2015
Lethbridge Dist Watermaster A Gallinger	4290
S E Lethbridge Dist Watermaster A Petrie	91-2023
Broxburn Dist Watermaster F Murray	91-2025
N Coaldale Dist Watermaster H W Rowley	91-2012
S Coaldale Dist Watermaster M J Lloyd	91-2031
Canal Supt R S Lawrence res	91-2021
Storekeeper Home Farm	91-2022
Land Inspector E S Williams	2870
Canada Colonization Assn Supvr G H Dick	2870
Central Farm Coaldale F E Robertson	91-2311
Home Farm J E Hunt	91-2033
Chin Farm	91-2831

CANADIAN PACIFIC TRANS-

PORT CO LTD 308 6th St S	3671
--------------------------	------

Messenger Errand & Distribution Service

GARRETT FURRIERS

FURS OF QUALITY

AT

POPULAR PRICES

REMODELING · REPAIRING · RELINING
COLD STORAGE · CLEANING · GLAZING

HULL BLOCK - Phone 3812

Canadian Red Cross Society

Conservatory of Music Bldg	2099
----------------------------	------

CANADIAN WESTERN NAT'L GAS
LIGHT HEAT & POWER CO LTD

420 6th St S	2510
--------------	------

J J Morrison Dist Supt res	2439
----------------------------	------

Canton Chop Suey House 318 2nd Ave S	3262
--------------------------------------	------

CAPITOL FURNITURE STORE

404 5th St S	2115
--------------	------

CAPITOL THEATRE 5th St S 2080

Carberry C E res 1016 7th Ave S	2752
Carlson A Gravel & Hauling Contr River Bottom	3610
Carlson A E res 1707 2nd Ave N	3994
Carney F res 914 2nd Ave S	3587
Carnill Mrs W res 1223 5th Ave-A S	2238
Carpenter E J res 811 8th Ave S	4270
Carpenter Mrs J A res 313 6th Ave-A S	4092
Carpenter J H res 513 12th St-B N	2081
Carrier Mrs F res 1210 2nd Ave S	3022
Carson Miss A res 422 8th St S	3403

CARSON H R LIMITED 316 7th St S 3155

Private Branch Exchange connecting all Depts

Wholesale Automotive Supplies Equipment etc

Carson Dr J E res 1401 7th Ave S	2421
Case J I Co	See Lethbridge Farm Equipment
Cash J res 1218 6th Ave S	2557
Cashore J H res 537 13th St S	3032
Castle Mrs A R res 1321 10th Ave S	3734
Castle C res 704 9th Ave S	2952
Castles E res 821 6th St S	2856

CATELLI FOOD PRODUCTS LTD

12th St-A N	3236
-------------	------

CATERPILLAR TRACTORS COMBINES
& ROAD MACHINERY Union Tractor

& Harvester Co Ltd 1269 2nd Ave S	2606
-----------------------------------	------

Catton Wm res 735 12th St N	4459
-----------------------------	------

Caudwell T H res 334 12th St S	2519
--------------------------------	------

Cawsey J A res 1205 8th Ave S	4016
-------------------------------	------

STOP
AT
T

TED'S TERMINAL

"SMILE A MINUTE SERVICE STATION"

IMPERIAL 3 STAR & ESSO GASOLINE — MARVELUBE & MOBILOIL MOTOR OIL

ATLAS TIRES

Phone 2065 — 410 - 3rd Ave. S. — Phone 2684





Central Meat Market 406 13th St N 3295

CENTRAL SECOND HAND STORE
THE 408 5th St S 2551

CENTRAL SERVICE STATION
4th Ave & 5th St S 3749

Chalmers W D res 212 11th St S 2481
Chamberlin H G res 420 7th St S 2197
Chaplin Ed Sr res 1209 4th Ave S 3296

CHAPLIN EDDIE City Vulcanizing Shop
Rear Dallas Hotel 2332

Chapman Harry A res 1246 5th Ave S 3821
Chapman T O Sr res 512 12th St-B N 3589
Chapman Thos Jr 91-1812
Chappell Stanley L res 938 8th St S 2617
Charlton & Hill Sheet Metal Wks 710 3rd Ave S 2599
Charlton Mrs J res 323 11th St S 3012
Charyk J A res 318 7th Ave S 2265
Cherry Dr A res 1424 7th Ave S 4024
Cherwinski Mrs J res 230 16th St N 3267
Chester H res 1232 6th Ave-A S 3865
Chester J C res 967 11th St S 2845
Chester Mine J C Chester 91-3015
Chinook Club 1119 3rd Ave S 2443
Chisholm R J Agt Oliver Farm Eq Ltd 330 13 St N 2595
Chisholm R J res 325 15th St S 3538
Chiswick G res 501 14th St S 3246
Chow L 91-1323

CHRISTENSEN BROS Funeral Home
320 11th St S 2802
Ambulance Service
M E Christensen res 320 11th St S 2802

Christensen L H 91-1131
Christensen M E res 320 11th St S 2802
Christensen P res 319 13th St S 2834
Christensen W K res 1402 3rd Ave N 3557
Christie A res 1-411 5th St S 2888
Christie Grant Co Mrs M Goodman 308 5th St S 4344
Christie R res 1809 5th Ave N 2797
Christie W E Electrical Contr 803 12th St-C N 4128

CHRYSLER PLYMOUTH SERVICE
413-417 6th St S 2887

Church Ed res 721 12th St S 2799
Church H W Barrister 10 Oliver Blk 4015
Church H W res 535 15th St S 2002
Ciesla Paul res 1818 6th Ave-A N 4285
Citizens Lumber Co 91-2623

Directory Advertising Pays



CITY DAIRY 411 4th St S 3124

CITY OF LETHBRIDGE

Mayor's Office 332 7th St S 2284
City Manager J T Watson 3645
City Clerk F Steedman 2355
Treasurer T H Fleetwood 3553
Light & Water Accounting Dept 3553
City Engineer & Public Works 3541
Waterworks Department 3541
Health Dept Plumbing & Gas Inspections 3541
Assessor & License Inspector 2310
Police Station City Hall 2145
Chief of Police City Hall 3808
City Laboratory 3136
Cemetery 3774
Electric Light Power & Street Railway 3645
Fire Station No. 1 (for fire only) Fire Hall 3333
Fire Station No 1 Ambulance and General
Office 4th St & 2nd Ave S 3340
Fire Station No 2 13th St N 2445
Isolation Hospital 1920 7th Ave S 3430
Stores Dept 3rd St & 4th Ave 2283
Exhibition Board Henderson Park 4131

NIGHT CALLS ONLY

Electric Trouble Dept 619 14th St S 2404
Waterworks Trouble Dept 3731
Public Works Dept J Haimes res 3013

CITY SIGN WORKS

Robert-Barrowman 714 3rd Ave S 3686
N Hall res 4204

City Vulcanizing Shop Eddie Chaplin
rear Dallas Hotel 2332

CLANCY DR L D Chiropractor
7 Acadia Blk 3rd Ave S 2231

Clancy Dr L D res 425 12th St S 2387
Clark D F W res 512 15th St S 2264
Clark Dr Ward F Dentist 121 McFarland Blk 4140
Clark Dr Ward F res 639 15th St S 4136
Clarke A R res 719 12th St-A S 3702

CLARKE & CO Ready-to-Wear & Millinery
316 6th St S 3453

Clarke H G res 422 13th St S 3729

CLARKE H V Portrait Studio
McFarland Bldg 4th Ave S 2010

Clarke M J res 604 12th St S 3787
Clarke N E res 420 7th Ave S 4417
Clarke O W res 977 13th St S 3034
Clarke Photo Service McFarland Bldg 4th Ave S 2010
Clarke W T res 1256 7th Ave S 3701
Clarke's Coffee Shop 412 5th St S 4245

CLASSIC BEAUTY SHOP Lois Heninger
109 McFarland Bldg 3355

Clayton E res 509 12th St N 2367
Clemis D res 1266 6th Ave S 3648
Clemis Roy D res 1618 3rd Ave N 4012
Clemis Wm res 1322 6th Ave S 2878
Clendenan C E res 1232 6th Ave S 4014
Clendenning C S res 1603 7th Ave S 4392
Clifford R T res 412 12th St S 3308
Clough Adah res 322 3rd St S 3240

CLUB CIGAR STORE F J Basson
3rd Ave & 5th St S 3056

Coaker Owen 91-1433
Coaldale Cafe 91-2432
Coaldale Cheese Factory 91-2312
Coaldale Consolidated School 91-2625

FAT'S TAXI 3838

STEVE SMERK
24 HOUR SERVICE

Coaldale Hospital	91-2411
Coaldale Hotel Co	91-2611
Cockshutt Plow Co Ltd 1262 1st Ave S	3659
J J Firth Mgr res	3870
Coffey J R res 1231 6th Ave S	3030
Coffin Bertha M res 814 6th Ave S	3530
Cohen Hyman res 611 11th St S	2242
Coleman G L	91-1911
Collins P J res 1239 5th Ave S	2548
Colonists' Service Association Ltd 409 2nd Ave S	2151

COMMERCIAL PRINTERS & OFFICE OUTFITTERS LTD

326 7th St S	2999
J Heintz Pres & Mng Director res 1238 5th Ave S	2994
Comrie George C res 939 10th St S	4235
Conn Miss J res 1227 6th Ave-A S	2886
Connor Mrs E L res 7 Patterson Court	3479

CONSUMERS' HARDWARE & SUPPLY CO

516-518 3rd Ave S	
General Hardware Paints Baggage etc	2919
Chinaware Kitchen Goods Sporting Goods etc	2212
Office	2920
Convent St Aloysius 116 9th St S	3509

CONYBEARE DAVIDSON & DAVIDSON

Barristers	
British Canadian Trust Bldg	3711
R R Davidson KC res 1301 4th Ave S	2465
W P Davidson res 1301 10th Ave S	3449

Cook C W Electrical Contractor 719 3rd St S	3816
Cook E H res 324 14th St S	2078
Cook J M res 916 9th St S	4211
Cooke Rev J C res 292 7th Ave S	4112
Cooke R A res 321 15th St S	2693
Coon B T res 521 14th St S	4370
Cooper Albert res 643 7th St S	2640
Cooper E B res 1267 7th Ave S	3285
Cooper's Transport 3rd Ave S rear Rylands	2684
Cope G C res 624 12th St S	3618
Corenblum Max res 522 6th St S	4405
Cornwall H F res 914 12th St S	3126
Cosgrove J M res 1413 5th Ave S	4228
Cottam F W res 428 13th St S	2073
Coupland J C res 405 12th St-B N	4252
Coupland M W res 25 Victoria Mansions	3899
Coupland Miss Molly	91-1212
COURT HOUSE	See Provincial Govt
Cousineau V W res 802 12th St S	4351
Coutts J D res G-Hull Blk	2420
Cowan Wm res 1823 8th Ave N	2329
Cowgill E res 913 7th St-A S	2237
Cox George T res 617 8th St S	2753
Cox J W res 1705 2nd Ave N	2883
Coyne Leonard res 1219A 4th Ave S	4426
Crabb B G res 1715 9th Ave S	3447
Crabb S A B res 10th Ave & 20th St S	2438
Craddock E res 281 7th Ave S	2838
Cragg R C res Hardieville	2391
Craig Joe res 14th Ave West of Huff Refinery	2991
Craig Marjorie res 621 13th St S	2248
Craig Dr W P Dentist Rylands Blk	3357
Craig Dr W P res 639 12th St	2419

Cranley W B res 1313 10th Ave S	4403
Cranston H G res 943 13th St S	3627

CRANSTOUN E C Auditor & Accountant

7 Rylands Blk	4135
Cranstoun E C res 520 15th St S	3008
Crawford R A res 625 14th St S	2382
Crawford W P res North CPR Roundhouse	3799
Crest & Munslow	91-1933
Crewe R O res 921 11th St S	2268
Crichton J res 1285 3rd Ave S	4282

CRIPPS H A Piano Tuner 951 11th St S

Crispin J R res 1 Tudor Manor	4436
Crist C G res 1229 5th Ave S	3635
Crofoot G V res 625 9th St S	3997
Crofts Miss F res 810 15th St S	3579
Crombie Mrs E res 1512 3rd Ave N	4399
Crooks R J res 1405 9th Ave S	2902
Cropley Geo res Auto Camp Henderson Lake	4207
Cross A E res 728 10th St S	3168
Cross Wm res 107 21st St N	3247

CROSS' STUDIO Photography & Picture

Framing 614 3rd Ave S	2673
Crowe Miss Dorothy res 1808 4th Ave N	4051
Crowther J res 630 14th St S	2710

CRYSTAL DAIRY LTD 434 8th St S

Order Department	2576
General Office	2577
Cuell C T A res 316 15th St S	3495
Cull Percy res 528 13th St S	2598
Culver Phyllis res 1515 4th Ave N	3819
Cumming V B res 409 12th St S	2058
Cunningham Mrs Harriet res 207 5th Ave S	3264
Cunningham Rev J A res 712 2nd Ave S	4325
Customs Canada Collector of Customs Post Office	2688
Cut Rate Furniture Store Cor 2nd Ave & 8th St S	3024
Cuthbertson H W res 1222 3rd Ave S	3917

D

"D" Perlux Cleaners & Tailor 410 5th St S	3666
Dainty A res 239 15th St N	3851
Dainty A	91-1214
Daley James W res 424 15th St S	3042

DALLAS HOTEL 312 5th St S

Geo O Rowe Mgr res 534 14th St S	2312
	3752
Dalrymple James res 715 3rd St-A S	2103
Dalrymple & Lawrence General Merchants	91-3213

DAN'S REPAIR SHOP 320A 7th St S

3905	
Danforth L res 627 14th St S	4406
Daniel A J res 420 12th St S	2408
Daniel C R res Coaldale Rd	3601
Daniel C R Knight Farm	91-1832
Daniel Chas Jr	91-1811
Dave's Men's Shop Metcalfe Bldg	3484
Davey J A res 416 9th St S	3784
Davids A L res 326 12th St S	4272
Davids Abie res 718 9th St S	2085
Davidson A M res 1235 6th Ave S	2344
Davidson J A res 516 15th St S	2798
Davidson J Frank res 326 16th St S	2255

Davidson J M res 1110 5th Ave S	3432
Davidson John McD	91-2815
Davidson R R res 1301 4th Ave S	2465
Davidson W P res 1301 10th Ave S	3449
Davies Geo B res 410 14th St S	2931
Davies John I res 632 10th St S	4241
Davies O K res 541 12th St-A N	2789
Davis Mrs Albert M res 511 7th Ave S	3643
Davis B res 806 7th Ave S	2543
Davis E res 637 6th St S	2581
Davis E C H res 1008 6th Ave S	4236
Davis J L res 615 14th St S	2649
Davis N res 530 12th St S	2297
Davis R C res 1266A 7th Ave S	2546
Davis Roger	91-3423
Davis S S	91-2512
Dawson Charles E res 627 10th St S	3422
Dawson Cyril res 8 Patterson Court	2908
Dawson D P res 305 7th Ave-A S	3947
Dawson Mrs Stella res 621 8th St S	4339
Dawson W F res 712 10th St S	2995
Dawson W H res 1206 6th Ave S	2368
Dean J res 616 7th Ave S	4113

DEAN'S SHOE STORE 612 4th Ave S. 3050**DEERE JOHN PLOW CO LTD**

Implements 1239 2nd Ave S	3786
Repair Department	3976
Night Calls	3384
Local Agency A C McDonald 1245 2nd Ave S	2043

DeGuerre J B res 410 5th St S	3722
De Jourdan's Studio J M DeJourdan 105 8th St S	2658
Del's Cafe Cor 5th St & 4th Ave S	3091
Deliveries Ltd Lethbridge Breweries Bldg	2895
Del Monte General Store John Martens	91-2513
De Long Mrs W H res 532 14th St S	2893

DENCH OF CANADA LTD S E Dench Mgr

1101 2nd Ave S	4234
Dennis Miss Paulette res 310 3rd Ave S	3859
Derby W J res 965 13th St S	2652
Deverall E C res 1244 5th Ave-A S	2951
Dewar Wm res 334 19th St N	4081
Dick Bernard J	91-4021
Dick G H res 715 8th St S	3227
Dick Peter J	91-2725
Diller C K res 901 9th St S	4087

DIMOCK DR H C Physician & Surgeon

108 McFarland Bldg	4306
Dr H C Dimock res 1231 6th Ave-A S	2949

Doadt D L res 612 14th St S	2679
Dobay Mrs Steve res 1254 6th Ave S	3914
Dobbs S H res 836 12th St S	2101
Dodd George res 411 12th St-C N	2630
Dodd Mrs Gertrude res 523 12th St N	3393
Dodd W A Tailor 309 13th St N	2810

DODD'S AUTO ELECTRIC

405 4th Ave S	3250
George Dodd Mgr res 411 12th St-C N	2630
Dodge-De Soto Sales & Service 313 7th St S	3736
Doe Mrs K L res 1720 6th Ave-A N	4134
Doerksen B B	91-2313

Dogterom C	91-1631
Dogterom John W res 945 7th St S	3031
Dogterom W H res 1807 6th Ave N	2455
Dolighan E res 612 13th St S	4031
Domeier G res 928 8th St S	2013
Domeier W res 3 Devon Court	2863

DOMINION BEAUTY SUPPLY CO

Alberta Block	2250
Dominion Confectionery 418 5th St S	2460

Dominion Government Dept of Agriculture

Prairie Farm Rehabilitation W Wotherspoon	
Dist Engineer Post Office Bldg	2044
Prairie Farm Assistance Branch	
5 Metropolitan Bldg	3048
Veterinary Laboratory Post Office Bldg	3810

Dominion Government Income Tax Office PO Bldg. 2550**Dominion Government Dept of National Defence**

Lethbridge Garrison	
Garrison Hospital 413 14th St S	2985
Lethbridge Armoury Cor 6th Ave & 6th St S	2650
Engineer Works Officer RCE Internment Camp	2021
No 3 Works Coy RCE Orderly Room	2261
British Columbia Securities Commission	
A - Metcalfe Bldg	2466
Royal Canadian Air Force	
Bombing and Gunnery School No 8	3182

Dominion Government Dept of Transport

Civil Aviation Division	
District Airway Engineer Post Office Bldg	2290
Maintenance Radio Branch Sherlock Bldg	3840
Meteorological Radio Office—Kenyon Field	4334
Traffic Control Office—Kenyon Field	2226

Dominion Government Wartime Prices & Trade

Board McFarland Bldg	2663
----------------------	------

DOMINION RUBBER CO LTD

Bay Super Service Station	3580
---------------------------	------

Donald David res 627 9th St S	3361
Donaldson C S res 924 7th Ave S	3389
Donaldson Mrs Isabelle res 1242 7th Ave S	2059
Doram Charles res 1414 7th Ave S	2077
Dorwin Mrs S R res 633 5th St S	3725
Dow Jas	91-1941
Downer F W res 1 Strathcona Court	3606
Downing J C res 1262 7th Ave S	2263
Downs J H	91-1523
Doyle Larry res 624 14th St S	3687
Draffin George res 318 10th St S	4171
Drexel M H res 1245 5th Ave S	4249
Drinkall W H	91-1623
Drowley Georgina res 615 11th St S	2677
Drysdale James res 802 7th St S	2304
Dueck Jacob P	91-4012
Dueck Peter P	91-2341
Duff Arthur res 833 12th St S	3895
Duff Donald A res 750 7th Ave S	2004
Duffy P E res 542 7th St S	3283
Duncan Claude A res 614 13th St S	4342
Duncan Claude A	91-1113
Duncanson F R res 613 13th St S	3235
Dunlop R res 1252 4th Ave S	4168

DUNLOP TIRE & RUBBER GOODS CO LTD 7th St S

Dunn E res 215 2nd Ave S	2672
--------------------------	------

DUNN'S TAILORS Agts Stan's Men's Shop

327 5th St S	3730
--------------	------

Dupen A E res 625 7th St S	3418
----------------------------	------

Dupen H A res 927 7th St-A S	3438
------------------------------	------



Dutton E E res 528 15th St S	3665
Dutton W res 1253 6th Ave S	3983
Duval F E res 138 18th St N	2346
Dykes Andrew M res 331 20th St N	2495
Dykstra H D	91-1432

E

Easterbrook Miss Elva res 1502 6th Ave S	2478
Easton John res 917 8th St S	2411

EATON CO WESTERN LTD (THE T)

Branch Store 4th Ave & 6th St S	
Information & General Office	3727
Drugs Hosiery Men's Wear Notions Wools	2140
Foodateria (Groceries Fruits Vegetables)	3282
Meats & Fish	2657
Hardware Automobile Supplies Stoves	2054
Sporting Goods China Baggage Piece Goods	
Shoes Optical	3857
Women's & Juvenile Wear	3605
Furniture House Furnishings Radios	2722

Eaves M A res 412 8th St S	3797
----------------------------	------

ECONOMY GROCERY J W Moss

902 9th St S	2035
--------------	------

ECONOMY MEAT MARKET

E Pankhurst 904 7th Ave S	3855
---------------------------	------

Edmundson Fred res 1260 5th Ave S	4388
-----------------------------------	------

EDWARDS WM M Land Surveyor

11 Oliver Blk	4034
---------------	------

Edwards Wm M res 529 14th St S	3979
Egandie Mrs M res 931 10th St S	3965
Eichenlaub Rev V res 710 16th St N	4336
Eldridge P M res 1314 4th Ave S	2794
Elfstrom H res 318 4th St S	2849
Elks Club 5th Ave S	2633
Elliott Oliver G res 1305 7th Ave S	4019
Ellis H J res 636 12th St S	2499

ELLISON MILLING & ELEVATOR

CO LTD 2nd Ave S	
Sales Flour & Feed	2068
Grain Dept	4214
Manager & Accounting Dept	3552
Elevator—Coaldale	91-2514
Elevator—Coalhurst	91-3424

Ellison Morris H res 1245 6th Ave-A S	4304
---------------------------------------	------

Ellison R C res 1243 6th Ave-A S	4350
----------------------------------	------

ELTON DAVID HORTON K.C.

Barr Solr Notary Public 2 & 4 Stafford Blk	2523
--	------

Elton David Horton res 1209 7th Ave S	3709
Emery E A res 433 12th St S	3515
Emmerson George res 1265 6th Ave-A S	3861
Emmerson I H res 1514 5th Ave-A N	3002
Empire Furniture Store 120 5th St S	3980
Employment & Selective Service Office 215 7 St S	2603
Empress Confectionery 814 4th Ave S	2872
Engle P C res 534 12th St-C N	4398
English Mrs Joe res 613 7th Ave S	2316
Enns Jacob	91-4014

GARRETT FURRIERS

FURS OF QUALITY

AT

POPULAR PRICES

REMODELING REPAIRING RELINING
COLD STORAGE CLEANING GLAZING

HULL BLOCK - Phone 3812

Entomological Branch Post Office Bldg	3222
Laboratory	91-1515
Epp Dr D L Phys & Surg Office	91-2422
Epp Dr D L	91-2415
Erb M E res 802 7th Ave S	3710
Erdmann Ralph res 1221 7th Ave S	4104
Erickson M res 814 2nd Ave S	3873
Evans B C res 1307 9th Ave S	4387
Evans T res 611 8th St S	3275
Everson W C res 524 12th St-C N	3908
Everson W E res 14 St & 5th Ave S	2484
Ewart D	91-2822
Experimental Farm W H Fairfield Coaldale Rd	3385

EXPLOSIVES LTD Hoyt Hardware Ltd

Agts 608 3rd Ave S	3860
--------------------	------

F

FAIRBAIRN L E Barr Solr & Notary

Bank of Nova Scotia Bldg	4065
Fairbairn L E res 922 3rd Ave S	2249
Fairfield W H Office & Res Experimental Farm	3385
Fallwell George res 604 7th Ave S	4233

FARMERS' MARKET Hudson's Bay Bldg

Cor 1st Ave & 5th St S	3058
Farrell R res 213 5th Ave S	2592
Farrell W J res 527 14th St S	3023
Farries John	91-1013
Farris R C res 281 7th Ave-A S	2031
Farris Service Agency Collins & Acctg 2 Acadia Blk	2616
Farstad C W res 1252 6th Ave-A S	2119

FAT'S TAXI S Smerek 323 5th St S

Faulkner E res 701 12th St N	2130
Faunch E J res 924 10th St S	2590

FEFFERMAN HIDE & FUR CO

518 4th Ave S	4035
Fefferman M res 704 6th Ave S	2318
Felger T H res 1304 6th Ave S	2083
Ferguson J res 312 15th St S	3306
Ferguson James Y res 1809 1st Ave-A N	3910
Ferrier J J res 419 8th St S	3969
Field W E res 712 12th St-A S	2880
Figg H A res 627 19th St S	3987
Filchak J V res 543 12th St N	3796
Filchak Vincent res 545 12th St N	2682
Filmer J res 922 12th St S	3217
Findlay A res 1415 3rd Ave N	4365

FINDLAY'S AUTO PARTS

405 2nd Ave S	2605
---------------	------

FIRE DEPARTMENT (Fire only)STOP
AT
T**TED'S TERMINAL**

"SMILE A MINUTE SERVICE STATION"

IMPERIAL 3 STAR & ESSO GASOLINE — MARVELUBE & MOBIL OIL MOTOR OIL
— ATLAS TIRES —

Phone 2065 — 410 - 3rd Ave. S. — Phone 2684





Purity Milk is Pasteurized for Your Protection

ASK FOR THESE PURITY PRODUCTS TOO

CREAMO ■ BUTTER ■ BUTTERMILK ■ COTTAGE CHEESE

PURITY DAIRY - - - Phone 4124

5th Avenue South

Lethbridge

**STEVE'S
TAXI 4058**
24-HOUR SERVICE

First Baptist Church 8th St & 4th Ave S	2082
Firth H res 715 17th St N	3731
Firth J J res 502 14th St S	3870
Fisher A M res 1217 6th Ave S	2531

FISHER AUTO BODY WORKS

312 9th St S	3941
Fisher Ralph res 327 13th St N	4389
Fisher Roy res 730 8th St S	2647
Fisk R R res 723 9th St S	4476
Fleetwood Confectionery K Soady 1102 9th Ave S	3625
Fleetwood E H res 920 9th Ave S	3985
Fleetwood T H res 803 11th St S	3795
Fleming Alex res 1215 8th Ave S	4199
Fleming Mildred res 312 3rd St S	2070
Fletcher Dr C M Dentist 5 Oliver Blk	3410
Fletcher Dr C M res 638 15th St S	3673
Flett U A res 6 Victoria Mansions	2638
Flinn E R res 706 7th Ave S	4368
Flinn Wm res 1259 5th Ave-A S	3245
Flock H J res 1301 5th Ave S	4317

FLOCK'S FUNERAL HOME

1110 3rd Ave S	2929
Ambulance Service	
Fong Edward res 308 1st Ave S	2932
Fooks J H res 1234 4th Ave S	3511
Forbes Dr G H res 284 7th Ave S	3771
Forbes H res 1102 2nd Ave S	4360
Ford C H res 721 3rd St S	3241

FORD SALES & SERVICE

435 5th St S	3633
Forrest J A res 628 7th St S	3372
Forster Agency The 306 7th St S	2793
Forster C E res 1215 9th Ave S	4181
Forster E R J res 626 10th St S	3883
Forster Fred G res 1240 5th Ave-A S	4156
Forsyth Coal & Cartage 2033 1st Ave N	2729
Foster Frank	91-2533

FOUR X BAKERY

(See Canadian Bakeries Ltd)	3266
Fourth Avenue Hairdresser 512 4th Ave S	4217

FOWLER DR DOUGLAS B Phys &

Surg Hull Blk	2622
Dr Douglas B Fowler res 1403 5th Ave S	4356



FOWLER'S GREENHOUSES

730 6th St S	3179
Fox G H res 920 13th St S	3931
Fozard G A res 634 13th St S	3696
Fozard Mrs John res 530 12th St-B N	2790

FRACHE BROS LTD Florists Retail

Store 322 6th St S	2666
Greenhouses Henderson Park	2003
Greenhouses North Lethbridge	2768

Frank's Groceries F Dorogdi 407 2nd Ave S	2737
Fraser W A res 707 13th St N	2694
Frayn Mrs A res 607 6th St S	2972
Frayne Elsie res 1414 4th Ave N	4193
Frear Mrs E C res 526 5th St S	2458
Frear H C res 631 5th St S	4198
Freder E res 908 8th Ave S	4046
Freel James res 405 4th St S	3793
Freel Rodina res 321 6th Ave-A S	2181

FREEL SHEET METAL WORKS

412 4th Ave S	2713
---------------	------

FREIGHTWAYS CANADIAN

1250 1st Ave S	2945
French Mrs T res 202 11th St S	2039
Frey E E	91-2924
Frey I res 732 13th St S	3720
Frier S res 1401 6th Ave-A N	2629
Friesen Garage J C Friesen	91-2522
Friesen J C	91-2525

FRIGIDAIRE Sales & Service

Roy Electric Co 406 5th St S	3735
Frisby G A res 636 10th St S	4086
Fryett Insp E D res Cor 3rd Ave & 13th St S	2613
Fuller George res 620 12th St N	3692
Fumerton Dr A S Dentist 3 Oliver Blk	2199
Fumerton Dr A S res 634 15th St S	2718

G

Gaetz L O res 909 8th Ave S	3916
Galbraith Mrs Dorothy res 730 17th St N	2662
Galbraith Mrs W S res 616 14th St S	2253
Galdzinski J res 284 7th Ave-A S	2564
Gallinger A res 621 10th St S	4290

GALT HOSPITAL General Office 5th Ave S

Private Branch Exchange connecting all Depts	3136
Residence 204 5th Ave S	2608

GALT SERVICE STATION

cor 4th Ave & 9th St S	2728
------------------------	------

GARBUTT BUSINESS COLLEGE

Miss M E Denholm Principal Masonic Hall Bldg	2315
Garden Clothing Co 318 5th St S	4210

GARDEN HOTEL 510 3rd Ave S

Gardiner Mrs A J M res 620 11th St S	3599
Gardiner C res 1-632 8th St S	2962
Gardner R W res 301 6th Ave-A S	2446
Garnet Miss Jean res 804A 4th Ave S	2740