



TELEPHONE DIRECTORY

LETHBRIDGE

& DISTRICT

Alberta Government Telephones JULY, 1941

Store
Information

3727

THE T. EATON CO.
WESTERN LIMITED
BRANCH STORE

Store
Information

3727

Drugs, Hosiery, Men's Wear, Notions.....	2140	Sporting Goods, China, Baggage.....	3857
Foodateria (Groceries, Fruits, Vegetables).....	3282	Piece Goods, Shoes, Optical.....	3857
Meats and Fish.....	2657	Furniture, House Furnishings, Radios.....	2722
Hardware, Automobile Supplies, Stoves.....	2054	Wools, Fancy Goods, Women's Wear.....	3605



PHONE
2576

Milk
Cream

Crystal Dairy
LIMITED

The Home of Pure Dairy Products

■ **TASTE THE DIFFERENCE** ■

FARMERS:—We Solicit Your Shipments of Churning Cream

PHONE
2577

Ice
Cream



BIJOU TAXI 2750

And U-Drive Cars

W. HOSELTON, Prop.



50c. AND UP

FAT'S TAXI

STEVE SMEREK

323 - 5th St. So.

24 HOUR SERVICE

HEATED CARS

PHONE

3838

HOTEL ALEXANDRA

PHONE

3142

Air Conditioned

FREE LOCAL CALLS • CENTRALLY LOCATED

PHONE

3142

MARQUIS TAXI

CITY
TRIPS

50c

PHONE

3545

OFFICE
MARQUIS
HOTEL

FOR
A QUICK START | CLEANER MOTORS
GREATER MILEAGE

USE

"Seventy-Seven 'Power' Gasoline"

IT'S DUBBS CRACKED ■ IT'S DIFFERENT ■ IT'S BETTER

Marketed in Alberta Exclusively by

SEVENTY-SEVEN OIL COMPANY

Phone 2775

It's Simple

The best of Everything
GOES IN



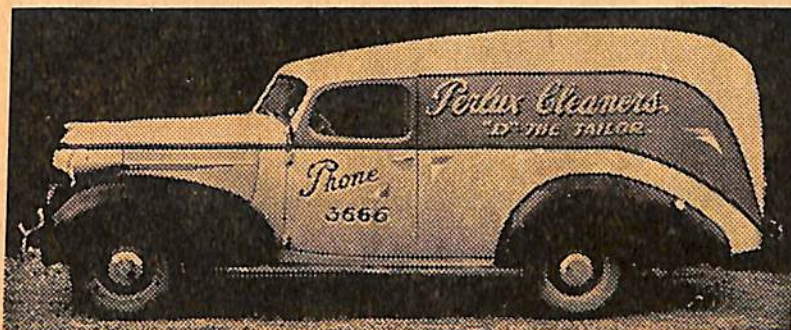
And, of course
the best of all
COMES OUT

Phone

3378

McGAVIN'S
BREAD & CAKES

DE LUXE CLEANING



*Alterations
and
Repairs*

■
NIXON & SWAN
Props.

■
2 Doors North of
Capitol Theatre
PHONE

3666

EMERGENCY CALLS

FIRE
3 3 3 3

POLICE
2 1 4 5

GAS
2 5 1 0
Night 2439

LIGHT
3 6 4 5
Night 2404

WATER
3 5 4 1
Night 3731

Telephone Service Calls

INFORMATION
9 2

LONG DISTANCE
0

TROUBLE
9 3

ALBERTA GOVERNMENT TELEPHONES

TELEPHONE DIRECTORY

OF

LETHBRIDGE

and District

JULY, 1941

HEAD OFFICE: C.P.R. Building, Edmonton

HON. W. A. FALLOW

Minister of Railways and Telephones

J. D. BAKER

General Manager

A. M. MITCHELL

Comptroller

W. C. BRUCE

General Plant Superintendent

W. B. FERGUSON

General Traffic Superintendent

Copyright, Canada, by Alberta Government Telephones

This directory is fully protected under the Copyright Laws of Canada and the publication of local telephone directories based upon information contained herein will be regarded as infringement of our copyright and the publishers thereof subject to action by us to protect that copyright. Subscribers and others should carefully consider the foregoing if solicited for advertising in local directories.

PRINTED IN CANADA

Alberta Government Telephones

Head Office: C.P.R. Building, Edmonton
Lethbridge Office: 808-810 4th Avenue South

HOW TO TRANSACT BUSINESS

With the Department of Telephones

APPLICATIONS FOR NEW SERVICE—CHANGES IN LOCATION— TERMINATION OF SERVICE

All matters relating to new telephone service, removals, termination of service, directory listings, adjustment of accounts, collection of bills, etc., are handled at the Business Offices of the Department.

CHANGES IN DIRECTORY LISTINGS

This telephone directory is issued regularly twice a year. Notification as to new listings, changes or corrections should be made to the Local Office at once.

DIRECTORY ADVERTISING

For information as to space or rates for Directory advertising, please communicate with Local Business Office.

SERVICE DIFFICULTIES

Below are shown the telephone numbers or persons to be called to report service difficulties. If at any time difficulties are not promptly corrected call the Manager of your Central Office:

INFORMATION—

For Information regarding New Subscribers and Changes of Telephone Numbers Call "Information" Dial 92

TROUBLE—

To Report Telephone Out of Order or unsatisfactory Local Service Call "Trouble" Dial 93

To Report Unsatisfactory Long Distance Service Call "Chief Operator" Dial 98

For District Traffic Superintendent Dial 4221

LONG DISTANCE—

To Call Long Distance Operator Dial 0

TERMS AND CONDITIONS

Under Which Telephone Service is Furnished

USE OF TELEPHONE

1. The service furnished is for the exclusive use of the subscriber and members of the subscriber's household or the subscriber's employees upon the subscriber's business, and the subscriber shall not extend the use of the telephone to any other person, nor shall the subscriber transmit messages for any other person; and if a residence telephone is used for business or professional purposes the Department may charge therefor the rate charged for business or professional telephones. The residence telephone number of a subscriber may be advertised only in conjunction with the advertising of his business telephone number.

The Department will endeavor to keep the lines and instruments in good working order and undertakes to clear trouble or make repairs with all reasonable despatch, but does not guarantee uninterrupted service.

The right of the subscriber is to use the instruments and connecting lines where the Department may place them, but not elsewhere, under such rules as the Department may from time to time prescribe.

The use of obscene, profane or abusive language while using the telephone is strictly forbidden and service may be immediately discontinued for violation of this rule.

2. The instruments and all accessories connected therewith shall remain the property of the Department and the subscriber shall not remove, alter, or make any attachment thereto; and the subscriber agrees to compensate the Department on demand for any damage, loss or destruction of the Department's instruments and accessories whilst such instruments and accessories are in or upon the premises of the subscriber.

CONSTRUCTION

3. When it is necessary to erect poles or anchors in order to carry the wires from the main telephone line on the road allowance or street to the applicant's premises, such poles and anchors in connection therewith will be supplied and erected by the Department at the expense of the applicant.

CHARGES — HOW PAID

4. All charges for installations, moves, and monthly rentals shall be paid in advance, which shall entitle the subscriber to service with all subscribers connected to the same exchange. Regular toll rates will be charged for all service to points outside of the exchange.

5. Subscribers shall pay the installation charges, first rental instalment (and construction charges, if any) strictly in advance. Excess mileage charge will be added if outside of exchange limits. If subsequent rental accounts remain unpaid after the 15th of the month, service shall be discontinued and no rebate or reduction shall be allowed for such interruption to service.

6. Subscribers shall pay monthly, at schedule rates, for all messages and conversations over the Long Distance lines. If said accounts remain unpaid after the 15th of the month, further credit shall be refused until account is paid.

7. Subscribers shall pay promptly, upon presentation of account, all charges for other miscellaneous items. If these charges are not paid within 15 days, service shall be discontinued.

COMPLAINTS RE LONG DISTANCE SERVICE

8. While the Department will carefully consider complaints in connection with toll service at any time received, it would be appreciated if subscribers would make such complaints immediately after conversation has taken place.

VACATION ALLOWANCE

9. Should a subscriber desire to have his Exchange Residence Service temporarily discontinued, owing to the closing of his residence, he may do so without cancelling contract or having telephone removed, and, if arranged for in advance in writing, an allowance of two-thirds of the rate per month will be made for a period of not less than one month and not exceeding three months in any one year. Subscriber shall state, when making application, the period for which he expects to be absent and shall pay for this period in advance. Subscriber will notify the Department when he wishes service resumed, either in writing or by calling at the office and signing re-connect order. Owing to the fact that Multi-Party Line Telephones cannot be disconnected without a special trip being made to their location, this regulation will not apply to Multi-Party Line Service.

MOVES

10. The telephone is first located where the subscriber directs and must not be moved or interfered with. When the subscriber desires to have the telephone moved to any other location, notice in writing should be given to the local office, at least ten days before the change is desired. The work will then be done as promptly as possible at regular charges.

JOINT USER SERVICE

11. A joint user is a person, firm or corporation who shares the subscriber's exchange service in accordance with tariff provisions. To facilitate this use of service, a directory listing is included.

Business joint user — one-third of business wall-set rate.

Residence joint user—50c per month.

CANCELLATION OF SERVICE

12. Subscribers giving up service must notify the Department in writing, or call at office and sign "Take Out" order. Failing to do this, subscriber will be liable for all charges up to date instrument is removed or taken over by a new subscriber.

DIRECTORIES

13. The Department of Telephones assumes no liability on account of errors in or omissions from its directories. Telephone directories are and remain the property of Alberta Government Telephones. They are printed for the exclusive use of the Department's patrons and are loaned to its subscribers. All persons are cautioned against reproducing their contents, which are fully protected by copyright. Subscribers must not use any binder, holder or other attachments, except as provided by the Department.

TELEPHONE NUMBERS

14. A subscriber's telephone number is not a part of the application for service, but numbers will only be changed when absolutely necessary or for the betterment of the service.

HOW TO USE THE TELEPHONE

AUTOMATIC TELEPHONE

Consult the Telephone Directory for the correct number before you make a call. Do not trust to your memory.

Call "92" for Information if the person or firm you wish to call is not listed in the Directory.

1. **Remove the Receiver.**—Be careful not to move the hook at any time during the call.

2. **Listen for the Dial Tone.**—This is a steady humming sound, when received it indicates that the equipment is ready for you to dial.

3. **What to Dial.**—It is necessary to dial each figure of the number in rotation.

4. **How to Dial.**—Suppose you are calling 2301. To dial this number proceed as follows:—

(1) Remove receiver and listen for the dial tone.

(2) Place your finger in the hole over the figure "2".

(3) Turn the dial around until your finger strikes the finger stop, then lift your finger and allow the dial to return to rest without touching it.

(4) Repeat this operation for the figures 3-0-1. If you find that you have made an error before you have

completed dialing, hang up the receiver for a few seconds, then remove the receiver, listen for the dial tone and after hearing it, dial your call again.

5. **Ring and Busy Signals.**—After you have finished dialing you should hear in the receiver either the ringing signal (an intermittent burr-r-r-ing sound) indicating that the called telephone is being rung, or the busy signal—a rapid buzz-buzz-buzz—indicating that the called line is busy.

If you hear the ringing signal and receive no answer within a reasonable period, hang up the receiver and call later.

If you hear the busy signal hang up the receiver and after waiting a reasonable length of time call again.

If you hear neither signal within half a minute, hang up the receiver for a few seconds, then remove it and dial again—If the same condition is found after several attempts, dial "93" and report the condition to "Trouble" operator.

6. **After You Have Finished Talking.**—Hang up your receiver—This will disconnect you from the called telephone. Leave your receiver on the hook for a few seconds before starting to make another call.

AUTOMATIC EXCHANGES

Information:—Call Information "92" for numbers of New Subscribers, Changes, Long Distance Line Charges, New Toll Offices, etc.

Trouble:—Complaints regarding Telephone Troubles should be reported to Trouble Operator, Telephone No. 93. When reporting trouble give telephone number affected and its location, also state as accurately as possible just how trouble manifests itself. Try to be specific, as incomplete information frequently causes delay in locating nature of trouble.

If a line you are trying to call repeatedly tests "busy," notify Trouble Operator, who will investigate whether same is caused by an abnormal condition on line, or from use. If any line appears too busy for good Service, write to the District Commercial Superintendent. Subscribers are requested not to engage Trouble or Information Operators in conversation longer than necessary, as by so doing the operator will be prevented from giving prompt attention to other patrons.

MANUAL TELEPHONE

Consult the Telephone Directory for the correct number before you make a call. Do not trust to your memory.

Ask for "Information" if the person or firm you wish to call is not listed in the Directory.

1. **To Call the Operator** give one long ring before removing the receiver from the hook and then hold the receiver to the ear.

2. **When the Operator Replies** by saying, "Number?" give the number of the subscriber's telephone desired, slowly and distinctly.

Example:—"1429" should be pronounced "one-four-two-nine." "175" should be pronounced "one-seven-five."

3. **Face the Transmitter** with the lips almost touching the mouthpiece. Speak naturally, distinctly and not too rapidly.

4. **Keep the Receiver to the Ear**, and the Operator, after repeating the number, will connect you with the subscriber called for. If the desired line is found to be in use the operator will report "Line Busy."

5. **When You Have Finished Talking** place the receiver on the hook, small end up, and give a short ring.

This gives the operator a signal to disconnect and you are then in a position to call another number or to be called.

NOTE:—At Camrose, Lacombe, Lloydminster, Hanna and Wetaskiwin (Common Battery Exchange) no ringing, except by rural line subscribers, is necessary. Simply remove receiver from hook and in all other respects proceed as instructed above, placing the receiver on the hook when conversation is finished.

6. **Do Not Use the Telephone** during a thunderstorm.

7. **Rural Line Subscribers** should limit their conversation to Five Minutes' duration and must not "listen in" to conversation not intended for them, as it interferes with the Service.

Complaints:—Complaints regarding telephone trouble and unsatisfactory Service should be made to the Local Manager, Agent or Chief Operator at the Office concerned, and if not rectified within a reasonable time, the matter should be referred to the General Traffic Superintendent at Edmonton.

LONG DISTANCE SERVICE

RULES AND REGULATIONS

To make a Long Distance Call, first call "Long Distance"—when the Long Distance Operator answers, give her your telephone number, followed by the details of your call as indicated below.

CLASSIFICATION OF LONG DISTANCE SERVICE

1. STATION-TO-STATION CALLS

The Station-to-Station rate applies when it is not desired to establish communication between particular persons.

Station-to-Station calls must be made by number whenever Telephone Directory information covering the called point is available. When such information is not available, the name or address under which the telephone is listed should be given, specifying that "anyone at that number will do."

EXAMPLE:—"4567, J. H. Brown speaking, I want to speak to Springdale, 684," or "I want to speak to Springdale, anyone at Mr. John Jones' residence (or business) telephone."

2. PERSON-TO-PERSON CALLS

(Except for points in Manitoba, British Columbia, Eastern Canada and the United States, evening and night rates do not apply to Person-to-Person Service.)

When a Long Distance Call is made, specifying that conversation is desired with a particular person and the connection is established and conversation held with that person, the "Person-to-Person" rate applies.

EXAMPLE:—"4567, J. H. Brown speaking, I want to speak to Springdale, 684, Mr. John Jones," or "If Mr Jones is not there, I will speak to Mr. A. F. Smith."

NOTE:—When a particular person is desired, the Long Distance operator must be so advised when the call is placed, otherwise charges will be made from the time connection is established with the telephone desired, whether the party is obtained or not.

Appointment Calls

An Appointment Call is a Person-to-Person call requiring communication to be established at a specified time, and order should be given to the Long Distance operator in the usual manner.

Messenger Calls

A Messenger Call is a Person-to-Person call, necessitating the services of a Messenger to secure the attendance of a specified person, and order should be given to the Long Distance operator in the usual manner. The Messenger Service and Report charges in such cases must be prepaid by the calling party if the call is placed from a Public Pay Station.

Collect Calls

Collect calls are Person-to-Person or Station-to-Station Calls, the charges for which are reversed, i.e., to be collected from the called party. In such cases the assent of the called party shall be obtained before the connection is established.

LONG DISTANCE SERVICE

RULES AND REGULATIONS—Continued

RATES AND CHARGES FOR LONG DISTANCE SERVICE

Long Distance Tolls will be charged to the subscriber from whose instrument the Long Distance call is placed, except those messages for which the receiving party expressly agrees to pay.

All rates quoted are for an initial period of three minutes. For over-time beyond the initial period a proportionate charge is made per minute.

The rates quoted on pages 8 and 9 are Station-to-Station Day Rates.

The Day Rate for a Station-to-Station call is the fundamental rate upon which the rates for other classes of Service are based.

The rate for a completed Person-to-Person Appointment or Messenger Call, including Written Messages and Telegrams, either Paid or Collect is approximately 25% higher than the corresponding Station-to-Station Day Rate.

Day rates only are used in computing charges on Person-to-Person, Appointment and Messenger Calls, including Written Messages and Telegrams.

Evening and Night Rates

Alberta & Saskatchewan—Reduced rates on Station-to-Station (anyone) calls are in effect from 7 p.m., to 12 Midnight, with a further reduction from Midnight to 4.30 a.m.

British Columbia, Manitoba, Eastern Canada and U.S.A.—Reduced rates are in effect from 7 p.m. to 4.30 a.m. including all day Sundays.

(NOTE:—In no case shall the Evening or Night rate, as the case may be, be less than 25c. for the initial period, unless the Day rate is less, in which case the Day, Evening and Night Rates shall be the same.)

Report Charges

Under certain conditions a Report Charge of approximately one-quarter of the Station-to-Station Day rate will be made on uncompleted Person-to-Person, Appointment and Messenger Calls, including Written Messages and Telegrams.

A Report Charge shall not be made on a Station-to-Station call except when the call is placed "Collect" and the charges have not been accepted.

PAY STATION SERVICE

Pay Station Telephones have been installed by the Department for the convenience of subscribers and the general public, in suitable locations throughout the Province. Local conversations may be had from these telephones at a charge of 5 cents for 5 minutes. Long Distance Service is furnished at regular tariff rates upon deposit of the amount of the initial charge (covering three minutes' conversation) the usual charges being made for excess time.

Non-subscribers who desire to use Subscribers' telephones should be referred to the nearest Public Pay Station.

If there is anything about our rates and practices you do not fully understand, please call our Local Manager or Chief Operator and they will be glad to explain.

To Places connected with the Long Distance Lines of the Alberta Government Telephones and Connecting Systems in Alberta.

TO	Station- to-Station Day Rate 3 Mins.	TO	Station- to-Station Day Rate 3 Mins.	TO	Station- to-Station Day Rate 3 Mins.	TO	Station- to-Station Day Rate 3 Mins.
	\$ c		\$ c		\$ c		\$ c
Abee	1.95	Carbon	1.80	Elk Point	1.80	Irricana	.75
Acme	.80	Cardston	.30	Ellscoot	2.10	Irvine	.75
Airdrie	.75	Carmangay	.25	Elmora	1.00	Islay	1.65
Alberta Beach	1.80	Carolside	.75	Empress	.95		
Alcomdale	.50	Carrot Creek	1.80	Endiang	1.00		
Alderson	1.50	Carstairs	.90	Entwistle	1.80	Jarrow	1.50
Alexo	1.20	Carvel	1.65	Erith	1.95	Jarvie	2.10
Alhambra	1.15	Castor	1.10	Erixon	1.15	*Jasper	2.85
Alix	1.20	Cavendish	.80	Esther	1.10	Jenner	.65
Alliance	1.05	Cereal	.95	Etter-McDougall	1.50	Judson	.20
Alsask, Sask.	1.20	Cessford	.70	Etzikom	.50		
Altario	2.10	Champion	.30	Evansburg	1.80		
Amber Valley	1.80	Chauvin	1.50	Evars	1.15	Kapasiwin	1.65
Andrew	1.50	Cherhill	1.80	Exshaw	.85	Kaydee	1.95
Antross	2.10	Chinook	.90			Killam	1.35
Ardmore	.35	Chip Lake	1.80			Kinsella	1.50
Armada	1.95	Chipman	1.65			Kirriemuir	1.15
Arrowwood	.50	Chisholm	2.25	Fallis	1.80	Kitscoty	1.65
Ashmont	1.20	Clareholm	.30	Fawcett	2.10	Knob Hill	1.50
Ashwell	1.95	Clive	1.20	Ferintosh	1.35		
Athabasca	2.10	Clyde	1.95	Flatbush	2.10	Lac La Biche	2.10
Atlee	.75	Coalspur	1.95	Flat Lake	1.95	Lacombe	1.20
Atmore	2.25	Coal Valley	1.80	Foisy	1.80	Lac Ste Anne	1.80
		Cochrane	.80	Foothills	1.80	Lafond	1.80
		Cold Lake	2.10	Foremost	.40	Lamont	1.80
		Columbine	1.95	Forestburg	1.35	Langdon	.60
Banff	1.00	Compeer	1.20	Fort Assiniboine	2.10	Lavoy	1.65
Barons	.20	Comrey	.65	Fort Kent	2.10	Leduc	1.50
Barrhead	1.95	Condor	1.20	Fort Saskatchewan	1.80	Legal	1.80
Bashaw	1.20	Conrad	.30	Fraspur	1.50	Legend	.40
Bassano	.50	Consort	1.15	Freedom	1.95	Leo	1.00
Battle Lake	1.50	Cooking Lake (North)	1.65			Leslieville	1.35
Bawlf	1.35	Cooking Lake (South)	1.65	Gadsby	1.10	Linaria	1.95
Beacon Hill	1.95	Coronado	1.80	Gainford	1.80	Lindbergh	1.95
Beauvallon	1.80	Coronation	1.10	Galahad	1.20	Lisburn	1.80
Beaver Crossing	2.10	Coutts	.40	Gleichen	.55	Little Gem	1.00
Bellis	1.95	Cowley	.35	Glendon	1.95	Lloydminster	1.65
Benalto	1.20	Craigmyle	.85	Glenevis	1.80	Lomond	.30
Bentley	1.20	Cremona	.90	Glenwood	.25	Longview	.55
Big Fish Lake	1.80	Crossfield	.85	Gorman	2.25	Lonira	1.95
Big Valley	1.00	Czar	1.35	Grand Centre	2.10	Looma	1.65
Bindloss	.85			Granum	.25	Lougheed	1.35
Blackie	.45			Grassy Lake	.35	Lunnford	1.95
Blairmore	1.95	Dakin	2.10	Green Court	1.95	Luscar	1.95
Bloomsbury	1.95	Dapp	1.95	Gull Lake	1.20		
Blue Ridge	1.80	Davis	1.95	Gunn	1.80	Mackay	1.80
Bon Accord	1.95	Daysland	1.35			Macleod	.20
Bonnyville	1.95	Deep Creek	2.25	Halkirk	1.10	Magnolia	1.80
Bordenave	1.00	Delburne	1.10	Hanna	.85	Magrath	.15
Bow Island	.55	Delia	.85	Hardisty	1.35	Mallaig	1.95
Bowden	.70	Derwent	1.80	Hay Lakes	1.50	Ma-Me-O Beach	1.50
Bowell	.65	Denville	1.65	Heaton Moor	1.95	Manly Highway	1.65
Box Springs	2.10	Didsbury	.90	Heinsburg	1.80	Manola	1.95
Boyle	1.95	Donalda	1.20	Heisler	1.35	Manville	1.65
Boyne Lake	.75	Donatville	1.80	Hespero	1.20	Manyberries	.65
Bragg Creek	.45	Doucette	.75	Highridge	1.95	Markerville	1.10
Brant	.55	Drumheller	.55	Hilda	.85	Mayerthorpe	1.95
Breezeland	1.50	Duchess	1.95	Hilliard	1.65	McLaughlin	1.65
Breton	.45	Duclos	2.10	Holden	1.50	Meadowview	1.95
Brooks	1.80	Durlingville	1.80	Holmes			

TO	Station- to-Station Day Rate 3 Mins.	TO	Station- to-Station Day Rate 3 Mins.	TO	Station- to-Station Day Rate 3 Mins.	TO	Station- to-Station Day Rate 3 Mins.
	\$ c		\$ c		\$ c		\$ c
Minburn	1.65	Pembridge	1.95	St. Paul	1.95	Three Hills	.85
Mirror	1.20	Pemukan	1.15	St. Vincent	1.95	Tilley	.50
Mission	2.25	Pendant d'Oreille	.60	Saddle Lake	1.80	Tipperary	1.95
Morecambe	1.80	Pendryl	1.50	Sangudo	1.95	Tofield	1.65
Morinville	1.80	Penhold	1.10	Sarrail	2.10	Trochu	.90
Morrin	.85	Perryvale	2.10	Saunders	1.50	Turner Valley	.60
Mountain Park	1.80	Pickardville	1.95	Schuler	.80	Two Hills	1.80
Mulhurst	1.50	Picture Butte	.10	Scollard	.95		
Mundare	1.65	Pincher Creek	.35	Scottfield	.90		
Munson	.80	Plains	1.95	Seba	1.80	Vale	.75
Musidora	1.80	Piamondon	2.25	Sedalia	1.00	Vegreville	1.65
Myrnam	1.80	Pollockville	.70	Sedgewick	1.35	Venice	2.10
		Ponoka	1.35	Seven Persons	.55	Vermilion	1.65
Naco	1.00	Princess	.55	Shandro	1.80	Veteran	1.10
Nanton	.40	Provost	1.35	Sheerness	.85	Viking	1.50
Neerlandia	2.10	Radway	1.80	Shoal Creek	1.95	Vilna	1.95
Nelspur	1.50	Rainier	.40	Sibbald	1.00	Vimy	1.95
Nemiscam	.45	Ray	1.80	Silver Bay	1.50	Vulcan	.35
Nestow	1.95	Raymond	.15	Sinclair	2.10		
New Brigidon	1.05	Redcliff	.60	Sion	1.80	Wabamun	1.80
Newbrook	1.95	Red Deer	1.15	Skiff	.35	Wainwright	1.50
New Dayton	.20	Redwater	1.80	Smoky Lake	1.95	Wake-Shyre Lodge	.75
New Sarepta	1.50	Retlaw	.25	South Cooking Lake	1.65	Walker	.65
Niton	1.95	Richards	2.10	Spedden	1.95	Walsh	.80
Nobleford	.15	Richdale	.90	Standard	.65	Wardlow	.65
Noral	2.10	Rife	1.95	Stanger	1.80	Warner	.30
Nordegg	1.50	Rimbey	1.35	Stanmore	.90	Warspite	1.95
North Cooking Lake	1.65	Rochester	1.95	Stavely	.35	Waskatenau	1.95
Northville	1.80	Rochford	1.95	Sterco	1.80	Waterton Park	.45
		Rockyford	.70	Stettler	1.15	Wayne	.75
Okotoks	.55	Rocky Mountain House	1.35	Steveville	.60	Westerose	1.50
Olds	.95	Rosebud	.70	Stony Plain	1.65	Westlock	1.95
Onoway	1.80	Rose Lynn	.80	Strathmore	.60	Wetaskiwin	1.50
Opal	1.80	Rosevear	1.95	Strome	1.35	White Court	2.10
Orion	.60	Ross	1.50	Suffield	.55	Whitla	.50
Owlsseye	1.95	Rossington	1.95	Sunnynook	.75	Wildwood	1.80
Oyen	.95	Rowley	.90	Sweet Grass, Mont.	.40	Willingdon	1.80
		Royalties	.55	Sylvan Lake	1.15	Willow Creek	.75
Pashley	.70	Rumsey	.90			Winfield	1.50
Patricia	.55	Rush Lake	.70	Taber	.25	Winnifred	.50
Paulus	1.65	Ryley	1.50	Tawatinaw	1.95	Wolf Creek	1.95
Paxson	2.10	St. Albert	1.65	Therien	1.95		
Peers	1.95	St. Lina	1.95	Thorhild	1.95	Yeoford	1.50
				Thorsby	1.50	Youngstown	.90

In addition to the points on pages 8 and 9 Long Distance Connection may be had also with the following places in Alberta, rates for which can be obtained by calling "Long Distance":—

ALBERTA POINTS

Acadia Valley	Beaver Heights	Brightview	Cluny	Dog Pound
Acheson	Beaver Hills	Britain	Clymont	Doondale
Adkins	Beaver Lake	Brocket	Coaldale	Dorenlee
Aerial	Beaver Mines	Brooksley	Coalhurst	Doris
Aetna	Beazer	Brownfield	Coleman	Dorothy
Agricola	Beddington	Brownlow's Landing	Colinton	Dowling
Albion Ridge	Beiseker	Broxburn	Commerce	Downing
Aldersyde	Bellevue	Bruderheim	Conjuring Creek	Drayton Valley
Alice Lake	Belvedere	Buffalo Head Ranch	Connaught	Duagh
Allerston	Bennett	Buffalo View	Copeville	Duffield
Alillingham	Benton	Buford	Cornucopia	Duhamel
Amisk	Berrymoor	Burmis	Countess	Dunmore
Angle Lake	Beverly	Burnt Lake	Cousins	Dunshalt
Angus Ridge	Beynon		Crowfoot	Dunstable
Ankerton	Bircham		Cummings	
Anzac	Birdsholm	Cadogan	Custer	
Ardenode	Bismark	Calling Lake		Eagle Hill
Ardenville	Bittern Lake	Calverly	Dahmer	Earlie
Ardley	Black Diamond	Campbell Lake	Dalemead	Earling
Ardrossan	Blackfalds	Campsie	Dalroy	Earlville
Armena	Blackfoot	Cappon	Darwell	Eastervale
Arneson	Blondheim	Cardiff	Davisburg	Eden Valley
Asker	Bluffton	Carlton Hill	Delacour	Edison
Avalon	Bodo	Caroline	Del Bonita	Edwell
Azure	Boian	Carseland	Demay	Elk Island
	Bonlea	Cassils	Desjarlais	Elk Island Park
Baintree	Bonnar	Cayley	Dewberry	Elkton
Balmoral	Borradaile	Chailey	De Winton	Elkwater Lake
Balzac	Botha	Chancellor	Diamond City	Ellerslie
Bardo	Bottrel	Cheadle	Dickson	Enchant
Barnwell	Bouyant	Chesterwold	Dina	Ensign
Bathgate	Bow City	Chigwell	Dinant	Entice
Battle	Bradshaw	Chin	Dinton	Equity
Battle Bend	Bremner	Clandonald	Dobson	Erskine
Battleview	Bretona	Clarinda	Dodds	Everett
Beaumont		Clearview		Ewelme
		Clover Bar		

ALBERTA POINTS—Continued

Excel Eyremore	Highland View Hillcrest Hill End Hillspring Hoadley Hobbema Homegren Horsehaven Horsehoe Lake Hubalta Hunterville Hutton Huxley	Martins Marwayne Masinasin Maughan Maunsell Maybutt Mayton Mazepa McDonaldville Meadowbank Meadow Creek Mearns Menaik Merna Mewassin Midland Midnapore Millarville Miller Milnerton Monarch Monitor Morgan Morley Morningside Mossie Mossleigh Mound Mountain View Murray Valley	Pirmez Creek Pleasant View Poe Poplar Ridge Poplar Site Pretty Hill Priddis Princeton Puffer Purple Springs Quarrel Queenstown	Stampede Stand Off Staplehurst Star Sterlingville Stirling Stobart Stockland Strand Strangmuir Streamstown Sugar Bowl Sullivan Lake Sulphur Springs Summerview Sundre Sunnydale Sunnyslope Swallow
Fabyan Fairacres Fairbank Fairfield Fairydell Faith Falun Farming Valley Farrow Federal Fedorah Fenn Ferrybank Fishburn Fleet Florann Foreman Forest Lawn Forshee Four Nine Frank Frankburg Freeman River	Indus Inga Ingletton Inverlake Iola Irwinville	Nacmine Nakamun Namaka Namao Neighbourview Nevis Newcastle New Lindsay New Norway New Oxley Nightingale Nilrem Nisbet Nisku Norfolk Siding Northbank Northern Valley Northleigh Norton	Raley Ranfurly Raven Redland Red Lodge Red Raven Red Willow Reid Hill Reist Rexboro Ribstone Rio Alto Rivercourse Riviere Qui Barre Rockeling Bay Rocky Rapids Rodino Rolling Green Rolling Hills Rosaling Rosedale Roselea Rosemary Rosenheim Rosenroll Ross Creek Rosyth Round Hill Rusylvia	Talbot Taylorville Tees Telfordville Tempest Thelma Throne Tindastoll Tolland Tomahawk Tongue Creek Torrington Travers Tudor Turin Twin Butte Twin Lakes Twining
Gahern Garden Plain Garred Gartley Gem Ghost Pine Gibbons Gilby Gillen Gilpin Gladys Glenbow Glenford Golden Spike Good Hope Good Luck Gopher Head Grainger Graminia Grand Valley Green Glade Greenshields Griesbach Grosmont Grotton Gwynne	Jeffrey Joffe Josephburg Jumping Pound	Ogden Ohaton Olin Creek Olson Coulee O'Mara Orkney Orton Ouelletteville Oxville	St. Kilda St. Michael Saltaux Sammons Sarcee Sather Scandia Scapa Scotstoun Seaforth Seabe Sexton Creek Sharples Shaughnessy Sheep Creek Shepard Shonts Shouldice Sidcup Silver Heights Silver Lake Simons Valley Skaro Soda Lake Southesk Spouden Springbank Spring Coulee Springdale Spring Lake Spring Point Springvale Spruce Grove	Ulster Vauxhall Victoria Viewpoint Villeneuve Volmer Wahstao Waltross Wanda Warden Warwick Waterglenn Water Valley Watts Wealthy Welling Wellsdale Westcott Westward Ho Whisky Gap Whitewood Lake Whitford Wildmere Willowdale Willowlea Wilson Siding Wilton Park Wimbome Winterburn Woodhouse Wood River Woolford Wostok Wrentbam
Gahern Garden Plain Garred Gartley Gem Ghost Pine Gibbons Gilby Gillen Gilpin Gladys Glenbow Glenford Golden Spike Good Hope Good Luck Gopher Head Grainger Graminia Grand Valley Green Glade Greenshields Griesbach Grosmont Grotton Gwynne	Kahwin Kaleland Kathryn Kavanagh Kelsey Keoma Kessler Kevissville Kew Kilbourn Kimball Kingman Kipperville Kirkcaldy Knee Hill Valley	Pakan Paradise Valley Parkland Park View Partridge Hill Passburg Peacock Pearce Pearson Peat Pekisko Perbeck Phillips Pibroch Pincher Station Pine Lake		Yarfield Yorkville

For Long Distance Rates See Pages 8 to 11

Use Long Distance and Advertise in
the Telephone Directory

Rates to Certain Points in Canada and the United States of America

Rates to points not listed below may
be obtained by calling Long Distance

FROM LETHBRIDGE

TO	STATION-TO-STATION				PERSON-TO-PERSON				Report Charge
	DAY (Exc. SUN.)		NIGHT and SUNDAY		DAY (Exc. SUN.)		NIGHT and SUNDAY		Day, Night and Sun.
	3 Mins.	Add. Min.	3 Mins.	Add. Min.	3 Mins.	Add. Min.	3 Mins.	Add. Min.	
AKRON, OHIO	\$5.25	\$1.75	\$3.25	\$1.00	\$6.75	\$2.25	\$4.75	\$1.50	\$.70
BALTIMORE, MD.	5.75	1.75	3.50	1.00	7.50	2.50	5.25	1.75	.75
BOISE, IDAHO	1.70	.55	1.05	.35	2.20	.70	1.55	.50	.35
BOSTON, MASS.	6.25	2.00	3.75	1.25	8.25	2.75	5.75	1.75	.80
BRANDON, MAN.	2.10	.70	1.25	.40	2.75	.90	1.90	.60	.40
BROOKLYN, N.Y.	6.00	2.00	3.75	1.25	7.75	2.50	5.50	1.75	.80
BUFFALO, N.Y.	5.25	1.75	3.25	1.00	6.75	2.25	4.75	1.50	.70
BUTTE, MONT.	1.15	.35	.65	.20	1.55	.50	1.05	.35	.25
CHICAGO, ILL.	4.25	1.25	2.50	.80	5.50	1.75	3.75	1.25	.60
CINCINNATI, OHIO	5.00	1.50	3.00	1.00	6.50	2.00	4.50	1.50	.70
CLEVELAND, OHIO	5.25	1.75	3.25	1.00	6.75	2.25	4.75	1.50	.70
DENVER, COLO.	2.75	.90	1.60	.50	3.50	1.00	2.35	.75	.45
DETROIT, MICH.	5.00	1.50	3.00	1.00	6.50	2.00	4.50	1.50	.70
DULUTH, MINN.	3.25	1.00	1.85	.60	4.00	1.25	2.60	.85	.50
GREAT FALLS, MONT.	.90	.30	.55	.15	1.25	.40	.90	.30	.20
HALIFAX, N.S.	7.25	2.25	4.50	1.50	9.50	3.00	6.75	2.25	.90
HELENA, MONT.	1.05	.35	.60	.20	1.40	.45	.95	.30	.20
KANSAS CITY, MO.	3.75	1.25	2.10	.70	4.75	1.50	3.10	1.00	.55
LOS ANGELES, CAL.	3.75	1.25	2.10	.70	4.75	1.50	3.10	1.00	.55
MILWAUKEE, WIS.	4.25	1.25	2.50	.80	5.50	1.75	3.75	1.25	.60
MINNEAPOLIS, MINN.	3.50	1.00	1.95	.65	4.50	1.50	2.95	.95	.55
MONTREAL, QUE.	5.75	1.75	3.50	1.00	7.50	2.50	5.25	1.75	.75
NEW YORK, N.Y.	6.00	2.00	3.75	1.25	7.75	2.50	5.50	1.75	.80
OAKLAND, CAL.	3.25	1.00	1.85	.60	4.00	1.25	2.60	.85	.50
OMAHA, NEB.	3.50	1.00	1.95	.65	4.50	1.50	2.95	.95	.55
OTTAWA, ONT.	5.50	1.75	3.25	1.00	7.25	2.25	4.75	1.50	.75
PHILADELPHIA, PA.	6.00	2.00	3.75	1.25	7.75	2.50	5.50	1.75	.80
PITTSBURG, PA.	5.50	1.75	3.25	1.00	7.25	2.25	4.75	1.50	.75
PORTLAND, ORE.	2.00	.65	1.15	.35	2.60	.85	1.75	.55	.35
REGINA, SASK.	2.25	.75	2.80	.9060
SAINT JOHN, N.B.	6.50	2.00	4.00	1.25	8.50	2.75	6.00	2.00	.90
ST. PAUL, MINN.	3.50	1.00	1.95	.65	4.50	1.50	2.95	.95	.55
SALT LAKE CITY, UTAH	2.20	.70	1.35	.45	2.90	.95	2.05	.65	.40
SAN FRANCISCO, CAL.	3.25	1.00	1.85	.60	4.00	1.25	2.60	.85	.50
SASKATOON, SASK.	1.95	.65	2.40	.8050
SEATTLE, WASH.	1.80	.60	1.05	.35	2.30	.75	1.55	.50	.35
SHELBY, MONT.	.55	.15	.35	.10	.80	.25	.60	.20	.15
SPOKANE, WASH.	1.15	.35	.65	.20	1.55	.50	1.05	.35	.25
TACOMA, WASH.	1.80	.60	1.05	.35	2.30	.75	1.55	.50	.35
TORONTO, ONT.	5.25	1.75	3.25	1.00	6.75	2.25	4.75	1.50	.70
VANCOUVER, B.C.	2.70	.90	1.30	.40	3.25	1.00	2.30	.75	.45
VICTORIA, B.C.	3.10	1.00	1.50	.50	3.75	1.25	2.65	.85	.50
WASHINGTON, D.C.	5.75	1.75	3.50	1.00	7.50	2.50	5.25	1.75	.75
WINNIPEG, MAN	2.50	.80	1.45	.45	3.25	1.00	2.20	.70	.45

Night rates apply from 7.00 p.m. to 4.30 a.m.

To secure Evening or Night Rates on Station-to-Station calls to points in Saskatchewan—Call the Operator.

Person-to-Person Night and Sunday rates do not apply on calls to points in Saskatchewan.

LETHBRIDGE

INFORMATION

92

For Information Regarding New Subscribers,
and Changes of Telephone Numbers

Dial 92

LONG DISTANCE

0

To report Unsatisfactory Long Distance
Service

Dial 98 and ask for Chief Operator.

TROUBLE

93

To Report Telephone Out of Order and
Unsatisfactory Local Service

Dial 93

**STEVE'S
TAXI 4058**
24-HOUR SERVICE

A

A B Confectionery Lee Wong 328 13th St N...3638
Adams Claudette res 312 3rd Ave S...2671
Adnitt W C res 340 19th St N...3854

ADVANCE LUMBER CO LTD

YARD OFFICE 13th St S & 2nd Ave...2063
J W Moran res 415 11th St S...2459
GENERAL OFFICE 5th Ave S & 4th St...3663
N S Stoltze res 1517 7th Ave S...3320
N H Turnbull res 1404 14th Ave S...3215
T C Griffiths res 1110 7th Ave S...2858
Ainscough W G res 508 13th St S...2441
Aird Jas res 1304 6th Ave S...2083
Aita's American Cash Grocery 431 18th St N...2418
Aitken D res 412 12th St S...2321
Aitken D B res River Bottom...2357
Aitken J A res 1312 4th Ave S...2259

ALBERTA GOVERNMENT—See also Provincial
Government

ALBERTA GOVERNMENT

TELEPHONES General Office 808-810

4th Ave S...2234
Information regarding New Subscribers and
change of Telephone Nos...92
Telephones out of order...93
Long Distance Operator...0
Chief Operator...98
R E Phillips Local Manager...2234
R E Phillips District Commercial Supt...3503
W L Shera City & District Clerk...3503
J B Burke District Plant Supt...3375
R Harper District Traffic Supt...4221

ALBERTA HIDE & FUR CO LTD

710 3rd Ave S...4045
Alberta Lumber Products 2018 2nd Ave S...2219

ALBERTA MEAT MARKET J Crighton

510 6th Ave S...3492
Alberta Montana Bus Lines Bus Depot 411 5 St S.2288
Alberta Motor Association
Information Bureau 306 7th St S...2793
Alberta Pacific Grain Co Ltd—Diamond City...91-3221
Alberta Pacific Grain Co Ltd—Tempest Siding...91-4023
Alberta Wheat Pool—Broxburn...91-2133
Alberta Wheat Pool—Coaldale...91-2523
Alberta Wheat Pool—Tempest Siding...91-4022
Alberta Wheat Pool—Wilson Siding...91-1423

Aldous Agency & Finance Co

Insurance Collections & Accounting
109 Sherlock Bldg...3712
Alex Taxi Marquis Hotel...3545

ALEXANDRA HOTEL 332 5th St S

Private Branch Exchange connecting all Rooms 3142
Alford E W res No 2 Fire Hall...3891
Allan Archie res Lethbridge Country Club...2527
Allan E res 707 7th Ave S...3284
Allan R T...91-2231
Allen Mrs Annie res 612 5th St S...4074
Allen E E res 319 15th St S...4358
ALLEN DR L T Dentist 8 Rylands Blk...2165
Allen Dr L T res 1503 7th Ave S...2871
Allen T S Jr res 1407 3rd Ave N...3835

ALLIS-CHALMERS RUMLEY LTD

Machinery & Repairs 307 11th St S...3933
Allison R res 522 12th St-B N...3624
Allison R E res 1264 4th Ave S...3528
Almie E M res 311 15th St S...3707

ALVAU N Herbalist 806 2nd Ave S...2074

WHEN
**TELEPHONING
ADVERTISER**
PLEASE MENTION THE
TELEPHONE DIRECTORY

TED'S TERMINAL

"SMILE A MINUTE SERVICE STATION"

PHONE IMPERIAL 3 STAR & ESSO GASOLINE ■ ■ ■
2684 ■ ■ ■ MARVELUBE & MOBILOIL MOTOR OIL



410 - 3rd AVE. S.

PHONE
2929

AMBULANCE

PHONE
2929

OPERATING FROM
FLOCK'S FUNERAL HOME

Amer B res 1321 10th Ave S	3734
Anderson A C res 519 13th St S	3975
Anderson Ed C res 1248 4th Ave S	3775
Anderson D L	91-2115
Anderson N J res 619 12th St S	4250
Anderson N J	91-1531
Anderson & Smith Grading Contrs Lethbridge	2777
Anderson W D Sr res 941 10th St S	2624
Anderson W Del res 1237 7th Ave S	2440
Andrew R G res 1247 8th Ave-A S	3841
Andrews W	91-1031
Androkovich A	91-1622
Arche Billiard & Cigar Store 325 5th St S	3366
Archer R G res 139 15th St N	2469
Archibald D C res 1247 6th Ave S	2923
Arkininstall C res 1624 3rd Ave N	3329

ARLINGTON HOTEL A E Dupen Mgr	
1st Ave & 4th St S	2278
Armitt John res 1733 5th Ave N	2954
Armstrong T B res 527 13th St S	3229
Armstrong W J res 622 6th Ave S	3301
Army & Navy Veterans Club 517 5th Ave S	3846
Arnold Mrs A M res 1610 6th Ave N	3397

ARNOLD DR H A Internal Medicine	
120 McFarland Bldg	3171
Dr H A Arnold res 635 11th St S	4042
Arnold T Jr res 330 19th St N	2820
Arnsdorf Mrs R res 303 7th Ave-A S	3826
Art Signs J Patey Majestic Theatre Bldg	2203

ARTIC OIL SALES LTD	
1211 2nd Ave S	3496
Artic Service Station L Coyne 3 Ave & 13 St S	4162
Artic Service Stn E Brennan—Shaughnessy	91-3124
Ascroft Chas res 246 15th St N	3318
Ascroft Mrs T res 1130a 13th St N	4023
Ashcroft P H res 712 3rd St S	3746

ASHDOWN MARSHALL A Optometrist	
407 5th St S	4222
C A Palmer Manager res	4077
Ashmore Vivian res 606 5th Ave S	3374
Ashton Mrs A M res 628 6th St S	2752
Askew Mrs Walter res 1210 5th Ave-A S	3210
Asplin A res 1703 7th Ave S	2222
Asplund C O Leth Cent Fdrs Assn 727 8th St S	2891
Atkinson J M res 1245 5th Ave-A S	3954

ATLAS LUMBER CO LTD Lumber &	
Builders' Supplies 3rd Ave & 16th St S	2384
J E McCorkle Manager res	4238

USE LONG DISTANCE

GARRETT FURRIERS

FURS OF QUALITY

AT

POPULAR PRICES

REMODELING - REPAIRING - RELINING
COLD STORAGE - CLEANING - GLAZING

HULL BLOCK - Phone 3812

ATTRIDGE & MILLER LTD Machinists

1116 2nd Ave S	2323
G R Miller res 1416 6th Ave S	4390
Night Calls	2680
Augenthaler R L Agt Standard Oil Co of B C	
1 Oliver Blk	3380

AUTOMOTIVE SUPPLY CO

Storage Batteries 205 10th St S	3848
Earl L Schoof Mgr res 207 10th St S	2011

B

B C Fruit Grocers & Confrs 906 3rd Ave S	2033
Baalim A G res 630 11th St S	3546

BAALIM BUILDING AGENCIES

317 7th St S	2432
Baalim Harry G res 619 9th St S	2643

BAALIM MOTOR CO LTD 7th St S

Parts & Accessories	2416
Manager & Salesmen	2621
Body Shop & Service Department	4055
General Office and Accountant	3436

BAALIM WHOLESALE DISTRIBUTORS 7th St S

Bailey Margaret res 927 9th St S	2747
Baines A E res 304 7th Ave-A S	3719
Baines C D res 423 11th St S	2875
Baines E C res 1316 6th Ave S	3901
Baines Hector res 284B 7th Ave-A S	4150
Baird R R res 324 13th St S	2195
Baker Philip	91-1124
Baker Roscoe	91-1114
Balcoske W res 419 8th St S	2349
Balderson Blanche res 1317 6th Ave S	4018
Balderson Mrs Pauline res 428 14th St S	2029
Baldwin L Ambris res 9 Victoria Mansions	2552



PHONE 2904

STORAGE

**BIJOU
TAXI**

2750

50c
and up

W. HOSELTON
Prop.



BATTERY WORKS

Factory Rebuilt Car Batteries

Wind Chargers and Light-Plant Batteries

Cor. 2nd Ave. & 10 St. S.

Lethbridge

PHONE
3848

STEVE'S
TAXI 4058
24-HOUR SERVICE

Bank of Montreal 522 3rd Ave S	3446
Manager's Office J C Downing	2526
Bank of Nova Scotia The 3rd Ave S	2711
Bannerman J res 1031 12th St-B S	2851

BANNERMAN MOTORS Nash Cars &

Diamond T Trucks 816 4th Ave S	2045
Bannerman N Groo res	3464
Baptiste C L res 124 19th St N	3837
Barby C res 1610 3rd Ave N	3169
Barnsley A res 629 11th St S	2267
Barnsley Arthur Real Estate 416 6th St S	2767
Barr James res 3 Strathcona Court	2350
Barrett Horace res 1212 8th Ave S	3998
Barrowman Robert res 283 7th Ave-A S	2147
Bartlett L G	91-1424
Bartlett W E res 520 12th St S	3927
Barton S res 20 Victoria Mansions	3743
Bass W H res 1003 8th Ave S	2547
Basson Fred res 709 7th Ave S	3467
Bateman M res 302 12th St S	4216

BATES A B SERVICE GROCERY

709 4th Ave S	2453
	2930
Bates T G res 275 7th Ave-A S	2086
Batsford Sidney T res 412 7th Ave S	3560

BATTERY WORKS 205 10th St S

Batty A D	91-1042
Bawden Miss res 1255 4th Ave S	2158
Bawlf N Grain Co Ltd	91-1422

BAXTER GEO H & SON Plbg Htg &

Gas Ftg 903 9th Ave S	3830
-----------------------	------

BAY SUPER SERVICE STATION

Hudson's Bay Bldg	3580
Bayley Len W res 220 Sherlock Bldg	2316
Beasley A M res 627 12th St S	2135

BEATTIE W S Barrister & Solicitor

10 Alberta Blk	3237
W S Beattie res 1262 4th Ave S	3150

BEATTY BROS LTD

Washers Ironers & Cleaners 409 5th St S	4054
---	------

BEAUMONT ARTHUR K.C. Barrister

& Solicitor etc 1262 6th Ave-A S	2118
Beaumont Mrs Emma res 425 12th St N	2780
Becker H N res 7 Galt Manor	2385

PHONE 2904

STORAGE

LONG DISTANCE MOVING

Jones

BECKER LUMBER CO LTD

310 7th St S Grd Flr Sherlock Bldg	2386
H N Becker res 7 Galt Manor	2385
Arthur Duff res 914 12th St S	3126
Bedwell Alfred E res 1 Macleod Trail	2582
Begoski A	91-2111
Belford V res 1314 6th Ave S	2570
Bell Arthur res 1208 5th Ave S	2346
Bell H res 1217 9th Ave N	2027
Bellchambers B H res 1507 7th Ave S	4324
Belzberg Jack res 1257 7th Ave S	2066
Benedek Bert res 504 6th Ave S	3542
Bennett Farm R P Anderson Mgr	91-1714
Benson Clifford L	91-3214
Benson Wm S res 531 15th St S	3751

BERMAC CYCLE & RADIO CO

408 6th St S	3232
Bernard J Nelson res 520 12th St-B N	3713
Bernard J R res 423 12th St-A N	2594
Berry Mrs H res 406 4th St S	2558
Berte John res 707 9th Ave N	2803

BIG CONE SUPER-RICH ICE

CREAM STORE THE 255 13th St N	2530
-------------------------------	------

BIGELOW FOWLER & GORDON DRs

Physicians & Surgeons Hull Blk	2622
Dr J K Bigelow res 418 13th St S	3885
Dr Douglas B Fowler res 1403 5th Ave S	4356
Dr W H A Gordon res 542 8th St S	4287
Shaughnessy Office	91-3121
Bigelow Dr J K res 418 13th St S	3885

BIJOU TAXI AND U DRIVE CARS

W Hoselton 416 4th Ave S	2750
Bikman Sam res 534 6th St S	2348
Billigmeier J J res 415 8th St S	3165
Binning Mrs Ellen res 113 16th St N	3862
Birrell Walter res 422 12th St-B N	2560
Bishop Mrs E A res 321 19th St N	4313
Bishop T	91-1431
Bitango Matt	91-1815
Black Gordon res 10 Patterson Court	4347
Black John H res 17 Devon Court	4009
Blackbourne L H res 1249 5th Ave-A S	4102
Blacker Mrs Geo res 302 6th Ave-A S	3117

BLACKFORD PRESS M B Blackford

rear Woolworth's Store 5th St S	3287
Blair Ken res 541 13th St S	3448
Blair W E res 943 9th St S	2714
Blais A E res 306 7th Ave-A S	3759
Blake G res 522 6th St S	3292
Blenner-Hassett Lon res 1213A 3rd Ave S	3035
Blenner-Hassett W A res 1214 3rd Ave S	2634
Bletcher Mrs B res 9 Tudor Manor	2947
Bletcher Miss H res 626 9th St S	2020
Blount W L res 323 7th Ave S	3408
Blythe D A res 1507 4th Ave S	2809
Board of Trade Office Board of Trade Bldg	2012
Bob's Transport 410 3rd Ave S	2684

BODARD STUART J Mgr Lilly & Bodard

Bank of Commerce Bldg	3211
Stuart J Bodard res 1221 6th Ave S	3214
Bohner Geo	91-2241

PHONE:

"SAFE MILK IS PASTEURIZED"

4124 - Purity Dairy

Milk - Cream - Butter - Buttermilk - Cottage Cheese



Bond Frank	91-4024
Borgal E R	91-4111
Bostock E W res 16 Devon Court	2804
Boston Hat Works & Shoe Shine 327a 5th St S	2961
Bostrom Miss E Beauty Shop 10 Rylands Blk	3575
Botsford Fred res 1258 6th Ave-A S	4085
Boulton C W res 1229 7th Ave S	3481
Boulton H	91-1521
Bourgett G res 319 7th Ave S	2521
Bowden F	91-1723
Bowers W	91-3422

BOWMAN C B AGENCY LTD

Real Estate & Insurance Acadia Bldg	2325
S A Wallace res	3788
Bow On Tong Co 316 2nd Ave S	3675
Bowron J E res 126 18th St N	4382
Boyd H res 544 12th St S	2410
Boyden P	91-1313
Boyse Harry res 401 19th St N	4138
Bradford J J Live Stock Dlr Stock Yards	2915
Bradford J J res 1238 6th Ave S	2698
Bradley H B res 1251 8th Ave S	4184
Bradley N H Engr Prov Public Wks 216 5th St S	2225
N H Bradley res 631 14th St S	2925
Brander A I res Riverview	2201
Brandow Mrs C E res 944 13th St S	2021
Breckenridge N J res 613 8th Ave S	2157
Brenton C J res 1217 7th Ave S	2683
Brindley J	91-1613
Brink E A res 635 10th St S	3662
Brite Spot The 712 3rd Ave S	3068

BRITISH AMERICAN OIL CO LTD

THE 17th St & 2nd Ave S	2585
C G Murray Branch Mgr res 533 11th St S	3033
J Dogterom Distributor res 945 7th St S	3031
Night Calls after 6 pm Sundays & Holidays	3033

BRITISH CANADIAN FINANCE LTD

H D Rood Mgr 315 6th St S	2843
---------------------------	------

BRITISH CANADIAN TRUST CO

315 6th St S	2843
H D Rood Manager res	2837
Brocklebank Frank res 318 12th St S	3781
Broder Canning Co 1st Ave & 23rd St N	2517
Brodie Mrs J res 648 11th St	2956
Brodie W S res 714 10th St S	3280

BROOKS' PERMANENT WAVE

SALON Dorothy M Erickson McFarland Bldg	4262
Brown C F res 1505 3rd Ave N	2583
Brown G S res Home Farm CPR	91-2021
Brown G W res 11 Tudor Manor	2408
Brown Geo res 420 8th St S	3018
Brown Dr T E Phys & Surg 329 7th St S	3505
Dr T E Brown res 604 15th St S	2276
Brown T M res 502 5th Ave S	2032
Brown's Musical Supplies 303 6th St S	2272
Brownrigg D J res 622 10th St S	3277
Bruce Mrs H H Travellers' Aid 204 9th St S	3723
Bruchet G res 1509 4th Ave S	3706
Brumwell J res 1228 3rd Ave S	4109
Brunet Insp J res Cor 13th St & 3rd Ave S	2613
Brunner W res 803 3rd Ave S	3929

GARRETT FURRIERS
FURS OF QUALITY

AT
POPULAR PRICES
REMODELING - REPAIRING - RELINING
COLD STORAGE - CLEANING - GLAZING
HULL BLOCK - Phone 3812

Bryan S res 324 15th St S	3939
Bryans Dr W E Phys & Surg 329 7th St S	3501
Dr W E Bryans res 1224 6th Ave-A S	2922
Bryant Chas res 635 8th St S	3984
Buchan R D res 1409 7th Ave S	2572
Buchanan B R res 624 14th St S	3268
Buchanan Stanley A res 938 13th St S	3352
Buchanan W A res 1404 4th Ave S	3508
Bugler J res 638 12th St S	3415
Bullis A H res 1408 7th Ave S	4073
Bungard S res 155 20th St N	2079
Burgess J B	91-2832
Burgmann Hall 418 13th St N	3882
Burke C res 515A 6th St S	3419
Burke J B res 628 15th St S	4271
Burkitt Mrs J C res 531 8th St S	2827
Burnap A J res 272 7th Ave S	3363
Burnard Mrs E res 307 7th Ave S	4263
Burnett Thomas M res 622A 6th Ave S	3317
Burnham H G res 439 18th St N	3780

BURNS & CO LIMITED

Office and Wholesale Dept 610 3rd Ave S	2388
Main Market 610 3rd Ave S	3412
Dominion Market Hill Blk	2654
Abattoir near Exhibition Grounds	3831
Burns D W res 1250 14th Ave N	2528
Burr Leland	91-1222
Burritt G H res 1255 5th Ave-A S	3531
Burton C E res 612 13th St S	4345
Burton J res 722 15th St S	3918
BUS DEPOT 411 5th St S	2288
Buss R J res 4 - 1228 6th Ave S	2224
BUZZ SHOP Vulcanizing 311 8th St S	3932
William Knox Mgr res	3868

C**CAIRNS DR EDMUND** Specialist in

Diseases of Children 120 McFarland Bldg	3171
Dr Edmund Cairns res 540 8th St S	3311
Cairns T M res 1 - 1228 6th Ave S	2822
Calder F res 833 15th St S	3753

CALGARY BREWING & MALTING

CO LTD Rear 314 11th St S	2488
----------------------------------	------

CALGARY POWER CO LTD

415 3rd Ave S	4267
W E Ross Dist Supervisor res	3825
E Leeds Local Manager res	3824
Cameo Cafe 323 5th St S	2485
Cameron C E Barrister C Metcalfe Bldg	3559
Cameron Everett C res 1256 5th Ave S	4165

STEVE'S
TAXI 4058
24-HOUR SERVICE

Cameron Miss L res 422 8th St S	4083
Cameron L & Co Milnry Ladies' Wr 312 6th St S	2850
Cameron Miss M res 4 Galt Manor	3629
Cameron Phyllis res 1 Galt Manor	3778

CAMPBELL BRYANS BROWN &**TUTTLE DRS** Phys & Surgs 329 7th St S

Drs Campbell & Brown	3505
Drs Bryans & Tuttle	3501

Campbell J M res 317 12th St S	4094
Campbell Dr P M Phys & Surg 329 7th St S	3505
Dr P M Campbell res 528 8th St S	2358
Campbell R res 928 7th St S	3519
Campbell R J res 808 7th Ave S	2229

CAMPBELL WILSON & HORNE LTD

See Horne & Pitfield Ltd

Canada Cafe Jim Yip 420 13th St N	2186
Canada Life Assurance Co Metropolitan Bldg	2816

CANADA PAINT & WALLPAPER**STORE** Wholesale & Retail 327 7th St S**CANADIAN BAKERIES LTD**

Cor 8th St & 7th Ave S	3266
O W Clarke Mgr res	3034

Canadian Bank of Commerce The 4 Av & 7 St S	2414
Manager's Office F L Rhodes	3461
Canadian Corps Commissionaires 246 13th St N	2903

CANADIAN FREIGHTWAYS

518 5th St S	2944
T C Mikkelsen res 649 10th St S	2254

Canadian Government Elevator General Office	4380
Elevator	4383

CANADIAN JOHNS-MANVILLE CO LTDWilkinson & McClean Ltd Alberta Distributors
1261 7th Ave S

Canadian Johns-Manville Co Ltd	
Yates Lumber Yards Dealers	
3rd Ave & 17th St S	3516

Canadian Legion B E S L 1st Ave & 9th St S	3426
--	------

CANADIAN OIL COMPANIES LTD

Office & Warehouse 17th St & 2nd Ave S	3208
M L McKinnon res	2108

CANADIAN PACIFIC RAILWAY**CARTAGE—PICK-UP & DELIVERY SERVICE** 2565**EXPRESS—V C Huycke Agent**

Information re Express	3434
------------------------	------

PASSENGER

Information re Trains and Steamships	3512
--------------------------------------	------

Ticket Agent H G Stretton	3512
---------------------------	------

Baggage Room	3741
--------------	------

Jones
LONG DISTANCE MOVING
PHONE 2904
STORAGE

CANADIAN PACIFIC RAILWAY—Continued**OPERATING**

Superintendent W H Ruthven	3642
Chief Clerk D Stevenson	3642
Assistant Superintendent W Thomas	2067
Division Master Mechanic L B George	2067
Assistant Chief Clerk C Jackson	2067
Division Engineer J M Campbell	3909
B & B Master and Roadmasters	3909

TELEGRAPHS—308 6th St S

Manager W R Russell	3671
Messenger Errand & Distribution Service	

YARD

Yardmaster—1st Ave S	3314
Roundhouse—Loco Foreman A Hayward	3724

Car Foreman F Carney	3724
Storekeeper W J Reader	2137

FREIGHT—13th St

Information re Incoming Freight	2154
Local Freight Agent F E Reagh	3354
Chief Clerk C C Collins	3354
Shed Foreman W D Robertson	3354
Rate Clerk	3354
Claims Clerk S Wakeman	2154
Cashier J Ferguson	2154
Car Service J E Rannard	3354
Billing Staff T S Allen	2154

STOCKYARDS

Foreman G McKenzie	3390
AGENT—Coaldale	91-2431
AGENT—Coalhurst	2236

DEPARTMENT OF NATURAL RESOURCES**Irrigation Branch**

F G Cross Supt Operation & Maintenance	2136
G S Brown Canal Supt & A W Kress Chf Clk	2136
Irrigation Office	91-2013
Drafting Room	91-2015
Watermaster Alex Gallinger—Lethbridge	4290
Watermaster A Petrie—Chin Headgates	91-2023
Watermaster F Murray—Coaldale Dist	91-2025
Watermaster R S Lawrence—Coaldale	91-2012
Watermaster H W Rowley—Coaldale	91-2031
G S Brown res—Home Farm	91-2021
Storekeeper—Home Farm	91-2022
Farm Foreman—Home Farm	91-2033
Central Farm Coaldale—F Robertson	91-2311
Chin Farm	91-2831

Land Branch

W P Clandillon Land Inspector	2870
Canada Colonization Assn H Dick Supervisor	2870

CANADIAN PACIFIC TRANS-**PORT CO LTD** 308 6th St S

Messenger Errand & Distribution Service

Canadian Red Cross Society

Conservatory of Music Bldg	2099
----------------------------	------

CANADIAN WESTERN NAT'L GAS LIGHT HEAT & POWER CO LTD

420 6th St S

J J Morrison Dist Supt res	2439
----------------------------	------

Canton Chop Suey House 318 2nd Ave S	3262
--------------------------------------	------

CAPITOL FURNITURE STORE

404 5th St S	2115
--------------	------

CAPITOL THEATRE 5th St S

Carlson A Gravel & Hauling Contr River Bottom	3610
Carney F res 527 8th St S	3587
Carnill Mrs W res 1223 5th Ave-A S	2238
Carpenter E J res 811 8th Ave S	4270
Carpenter Mrs J A res 313 6th Ave-A S	4092
Carpenter J H res 513 12th St-B N	2081

3

GREAT
MIXERS

Lethbridge
BREWERIES LIMITED

LIME RICKEY
CLUB SODA
DRY GINGER ALE



Beverages of Distinction

PHONE 3442 - 2444

FAT'S STEVE SMERK TAXI 3838

24 HOUR SERVICE

Carrier Mrs F res 1210 2nd Ave S 3022
 Carson Miss A res 422 8th St S 3403

CARSON THE E M SADDLERY & LEATHER GOODS CO LTD
 306 5th St S 3764
 R R Baird Mgr res 2195

CARSON H R LTD 316 7th St S 3155
 Wholesale Automotive Supplies Equipment etc
 Private Branch Exchange connecting all Depts

CARSON DR J E Dentist 111 McFarland Bldg 3030
 Dr J E Carson res 1401 7th Ave S 2421

Case J I Co See Lethbridge Farm Equipment
 Cash J res 1218 6th Ave S 2557
 Cashore J H res 537 13th St S 3032
 Castle Mrs A R res 1321 10th Ave S 3734
 Castle C res 704 9th Ave S 2952

CATELLI FOOD PRODUCTS LTD
 12th St-A N 3236

CATERPILLAR TRACTORS COMBINES & ROAD MACHINERY Union Tractor & Harvester Co Ltd 1269 2nd Ave S 2606

Caudwell T H res 334 12th St S 2519
 Cawsey J A res 1205 8th Ave S 4016
 Central Meat Market 406 13th St N 3295

CENTRAL SECOND HAND STORE
 THE 408 5th St S 2551

CENTRAL SERVICE STATION
 4th Ave & 5th St S 3749

Chalmers W D res 212 11th St S 2481
 Chamberlin H G res 420 7th St S 2197
 Chaplin A res 293 7th Ave-A S 4357
 Chaplin Ed Sr res 1209 4th Ave S 3296

CHAPLIN EDDIE City Vulcanizing Shop
 Rear Dallas Hotel 2332

Chapman T O Sr res 732 12th St-B N 3589
 Chapman Thos Jr 91-1812
 Chappell Stanley L res 938 8th St S 2617
 Charlton Mrs J res 323 11th St S 3012
 Charyk J A res 318 7th Ave S 2265
 Cherry Dr A res 1424 7th Ave S 4024
 Cherwinski Mrs J res 230 16th St N 3267
 Chester H res 1232 6th Ave-A S 3865
 Chester J C res 967 11th St S 2845
 Chester Mine J C Chester 91-3015
 Chinook Club 1119 3rd Ave S 2443
 Chisholm R J Agt Oliver Farm Eq Ltd 330 13 St N 2595
 Chisholm R J res 325 15th St S 3538

GARRETT FURRIERS

FURS OF QUALITY

AT
POPULAR PRICES
 REMODELING - REPAIRING - RELINING
 COLD STORAGE - CLEANING - GLAZING
HULL BLOCK - Phone 3812

Chiswick G res 501 14th St S 3246
 Chiswick Robert J res 636 10th St S 4086
 Chow L 91-1323

CHRISTENSEN BROS Funeral Home
 320 11th St S 2802
 Ambulance Service
 M E Christensen res 320 11th St S 2802
 Christensen J H res 12th Ave & 7th St-A S 2907
 Christensen L H 91-1131
 Christensen M E res 320 11th St S 2802
 Christensen P res 319 13th St S 2834
 Christensen W K res 423 14th St S 2913
 Christianson T res 912 7th Ave S 2124
 Christie Grant Co Mrs M Goodman 308 5th St S 4344
 Christie R res 1809 5th Ave N 2797
 Christie W E Electrical Contr 803 12th St-C N 4128

CHRYSLER PLYMOUTH SERVICE
 413-417 6th St S 2887
 Church Ed res 1512 6th Ave S 2799
 Church H W Barrister 10 Oliver Blk 4015
 Church H W res 535 15th St S 2002
 Citizens Lumber Co 91-2623

CITY DAIRY 411 4th St S 3124

CITY OF LETHBRIDGE

Mayor's Office 332 7th St S 2284
 City Manager J T Watson 3645
 City Clerk F Steedman 2355
 Treasurer T H Fleetwood 3553
 Light & Water Accounting Dept 3553
 City Engineer & Public Works 3541
 Waterworks Department 3541
 Health Dept Plumbing & Gas Inspections 3541
 Assessor & License Inspector 2310
 Police Station City Hall 2145
 Chief of Police City Hall 3808
 City Laboratory 3136
 Cemetery W Bedster 3774
 Electric Light Power & Street Railway 3645
 Fire Station No. 1 (for fire only) Fire Hall 3333
 Fire Station No 1 Ambulance and General
 Office 4th St & 2nd Ave S 3340
 Fire Station No 2 13th St N 2445

Continued on Next Page

STOP
 AT
 T

TED'S TERMINAL

"SMILE A MINUTE SERVICE STATION"

IMPERIAL 3 STAR & ESSO GASOLINE

MARVELUBE & MOBILOIL MOTOR OIL

410 - 3rd Ave. S.

ATLAS TIRES

Phone 2684



STEVE'S
TAXI 4058
24-HOUR SERVICE

CITY OF LETHBRIDGE—Continued

Isolation Hospital 1920 7th Ave S	3430
Stores Dept 3rd St & 4th Ave	2283
Exhibition Board Henderson Park	4131
NIGHT CALLS ONLY	
Electric Trouble Dept 619 14th St S	2404
Waterworks Trouble Dept	3731
Public Works Dept J Haines res	3013

CITY SIGN WORKS

Robert Barrowman 714 3rd Ave S	3686
N Hall res	4204

City Vulcanizing Shop Eddie Chaplin

rear Dallas Hotel	2332
-------------------	------

CLANCY DR L D Chiropractor

7 Acadia Blk 3rd Ave S	2231
Clancy Dr L D res 425 12th St S	2387
Clark D A res 1516A 7th Ave S	4147
Clark D F W res 512 15th St S	2264
Clark & Nichols Auto Repairs 315 4th St S	4343
Clark P J res 1103 7th Ave S	4046
Clark Dr Ward F Dentist 121 McFarland Blk	4140
Clark Dr Ward F res 639 15th St S	4136

CLARKE & CO Ready-to-Wear & Millinery

316 6th St S	3453
--------------	------

Clarke H G res 422 13th St S

	3729
--	------

CLARKE H V Portrait Studio

McFarland Bldg 4th Ave S	2010
--------------------------	------

Clarke M J res 604 12th St S

	3787
--	------

Clarke O W res 977 13th St S

	3034
--	------

Clarke Photo Service McFarland Bldg 4th Ave S

	2010
--	------

Clarke W T res 1256 7th Ave S

	3701
--	------

Clarke's Coffee Shop 412 5th St S

	4245
--	------

CLASSIC BEAUTY SHOP Lois Heninger

109 McFarland Bldg	3355
--------------------	------

Clayton E res 509 12th St N

	2367
--	------

Clemis D res 1266 6th Ave S

	3648
--	------

Clemis Wm res 1322 6th Ave S

	2878
--	------

Clendenan C E res 1232 6th Ave S

	4014
--	------

Clendenning C S res 1603 7th Ave S

	4392
--	------

Clifford R T res 711 12th St S

	3308
--	------

Clough Adah res 322 3rd St S

	3240
--	------

Club Cigar Store F J Basson 3rd Ave & 5th St S

	3056
--	------

Coaker Owen

	91-1433
--	---------

Coaldale Cafe

	91-2432
--	---------

Coaldale Cheese Factory

	91-2312
--	---------

Coaldale Consolidated School

	91-2625
--	---------

Coaldale Co-operative Supply Co

	91-2414
--	---------

Coaldale Hospital

	91-2411
--	---------

Coaldale Hotel Co

	91-2611
--	---------

Cockshutt Plow Co Ltd 1262 1st Ave S

	3659
--	------

J J Firth Mgr res	3870
-------------------	------

Cocq W A R res 2 Strathcona Court	4318
Coffin Bertha M res 814 6th Ave S	3530
Cohen Hyman res 1610 6th Ave S	2242
Coleman G L	91-1911
Collins P J res 1239 5th Ave S	2548
Colonists' Service Association Ltd 409 2nd Ave S	2151

COMMERCIAL PRINTERS & OFFICE OUTFITTERS LTD

326 7th St S	2999
--------------	------

J Heinitz Pres & Mng Director res 1238

5th Ave S	2994
-----------	------

Comrie George C res 939 10th St S

	4235
--	------

Conn Miss J res 1227 6th Ave-A S

	2886
--	------

Connor Mrs E L res 7 Patterson Court

	3479
--	------

Connor Miss L res 7 Devon Court

	2681
--	------

CONSERVATORY OF MUSIC**LETHBRIDGE J G Harper Director**

11th St & 5th Ave S	3765
---------------------	------

CONSUMERS' HARDWARE & SUPPLY CO**516-518 3rd Ave S**

General Hardware Paints Baggage etc	2919
-------------------------------------	------

Sporting Goods Chinaware Kitchen Goods etc	2212
--	------

Office	2920
--------	------

Convent St Aloysius 116 9th St S

	3509
--	------

Conybeare Mrs C F P res Riverview

	4359
--	------

CONYBEARE DAVIDSON & DAVIDSON Barristers

British Canadian Trust Bldg	3711
-----------------------------	------

R R Davidson KC res 1301 4th Ave S	2465
------------------------------------	------

W P Davidson res 960 13th St S	3449
--------------------------------	------

Cook A J res B - Rosedale Apts

	3263
--	------

Cook C W Electrical Contractor 719 3rd St S

	3816
--	------

Cook E H res 324 14th St S

	2078
--	------

Cooke Rev J C res 292 7th Ave S

	4112
--	------

Cooke R A res 321 15th St S

	2693
--	------

Coon B T res 607 7th Ave S

	4370
--	------

Cooper B G res 531 11th St S

	2409
--	------

Cooper E B res 1267 7th Ave S

	3285
--	------

Cooper's Transport 3rd Ave S rear Rylands

	2684
--	------

Cope G C res 624 12th St S

	3618
--	------

Cornwall H F res 914 12th St S

	3126
--	------

Cottam F W res 428 13th St S

	2073
--	------

Coupland J C res 405 12th St-B N

	4252
--	------

Coupland Miss Molly

	91-1212
--	---------

COURT HOUSE

	See Provincial Govt
--	---------------------

Cousineau V W res 802 12th St S

	4351
--	------

Coutts J D res G - Hull Blk

	2420
--	------

Cowan Wm res 1823 8th Ave N

	2329
--	------

Cowgill E res 913 7th St-A S

	2237
--	------

Cox George T res 617 8th St S

	2753
--	------

Cox J W res 1705 2nd Ave N

	2883
--	------

Crabb B G res 1715 9th Ave S

	3447
--	------

Crabb S A B res 10th Ave & 20th St S

	2438
--	------

Craddock E res 281 7th Ave S

	2838
--	------

Cragg R C res Hardieville

	2391
--	------

Craig J B res 1253 9th Ave S

	3257
--	------

Craig Joe res 14th Ave West of Huff Refinery

	2991
--	------

Craig Marjorie res 621 13th St S

	2248
--	------

Craig Dr W P Dentist Rylands Blk

	3357
--	------

Craig Dr W P res 639 12th St

	2419
--	------

Cranston H G res 636 16th St N

	3627
--	------

CRANSTOUN E C Auditor & Accountant

7 Rylands Blk	4135
---------------	------

Cranstoun E C res 520 15th St S

	3008
--	------

Crawford R A res 625 14th St S

	2382
--	------

Crawford W S res 1612 6th Ave S

	2110
--	------

Crest & Munslow

	91-1933
--	---------

Crewe R O res 921 11th St S

	2268
--	------

Cripps G H & Son Piano Tuners 627 10th St S

	2168
--	------

Jones
LONG DISTANCE MOVING
PHONE 2904
STORAGE

FAT'S TAXI

STEVE SMEREK
24 HOUR SERVICE

3838

Crist C G res 1229 5th Ave S	3635
Crofoot G V res 620 12th St S	3997
Crofts Miss F res 810 15th St S	3579
Cropley Geo res Auto Camp Henderson Lake	4207
Cross A E res 730 10th St S	3168

CROSS CLIFTON C & CO LTD

Investments & Real Estate Greyhound Bldg	2460
Night Calls F C Rubbra res	4145
Cross F G res 1018 1st Ave S	3798
Cross Wm res 107 21st St N	3247

CROSS' STUDIO Photography & Picture

Framing 614 3rd Ave S	2673
Crowe D H res 1609 5th Ave N	3679
Crowe Miss Dorothy res 1808 4th Ave N	4051
Crowley Transport 4th Ave & 8th St S	4167
Crowther J res 630 14th St S	2710

CRYSTAL DAIRY LTD 434 8th St S

Order Department	2576
General Office	2577
Cuell C T A res 316 15th St S	3495
Cull Percy res 528 13th St S	2598
Culver Phyllis res 1515 4th Ave N	3819
Cumming J B res 1245 8th Ave S	2049
If no answer call	2820
Cumming V B res 409 12th St S	2058
Cundall's Smart Shoe Shop McFarland Bldg	2760
Cunningham Mrs Harriet res 207 5th Ave S	3264
Currie R H res 1617 7th Ave S	3924
Customs Canada Collector of Customs Post Office	2688

CUT RATE FURNITURE STORE

116-118 5th St S	3024
Night Calls K S Godfrey	2948
Cuthill R W res 1 Devon Court	2740

D

"D" Perlux Cleaners & Tailor 410 5th St S	3666
Dainty A res 239 15th St N	3851
Dainty A	91-1214
Daley James W res 424 15th St S	3042
DALLAS HOTEL 312 5th St S	2312
Geo O Rowe Mgr res 534 14th St S	3752
Dalrymple James res 715 3rd St-A S	2103
Dalrymple & Lawrence General Merchants	91-3213
DAN'S REPAIR SHOP 320A 7th St S	3905
Daniel C R res Coaldale Rd	3601
Daniel C R Knight Farm	91-1832
Daniel Chas Jr	91-1811
Dave's Men's Shop Metcalfe Bldg	3484
Davidson J A res 516 15th St S	2798
Davidson J Frank res 326 16th St S	2255
Davidson J M res 1110 5th Ave S	3432
Davidson John McD	91-2815
Davidson R R res 1301 4th Ave S	2465
Davidson W P res 960 13th St S	3449
Davies Geo B res 410 14th St S	2931
Davies John I res 632 10th St S	4241
Davies O K res 541 12th St-A N	2789
Davis Mrs Albert M res 511 7th Ave S	3643
Davis E res 637 6th St S	2581
Davis E C H res 1008 6th Ave S	4236
Davis J L res 615 14th St S	2649
Davis N res 515 6th St S	2297

DE JOURDAN

STUDIO AND COMMERCIAL PHOTOGRAPHY

PHONE 2658 105-8th Street S.
(OPP. RAILWAY STATION)

Davis Roger	91-3423
Davis S S	91-2512
Dawson Charles E res 1245 5th Ave S	3422
Dawson Cyril res 8 Patterson Court	2908
Dawson D P res 305 7th Ave-A S	3947
Dawson Frank H res 3 Maple Court	4339
Dawson W H res 1106 7th Ave S	2368
Dean J res 616 7th Ave S	4113
Dean's Shoe Store 612 4th Ave S	3050

DEERE JOHN PLOW CO LTD

Implements 1239 2nd Ave S	3786
Repair Department	3976
Night Calls	3384
Local Agency A C McDonald 1245 2nd Ave S	2043

DE JOURDAN'S STUDIO

J M DeJourdan 105 8th St S	2658
Delay J W res 529 12th St-C N	2939
Del Monte General Store John Martens	91-2513
De Long Mrs W H res 532 14th St S	2893

DENCH OF CANADA LTD S E Dench Mgr

1101 2nd Ave S	4234
Derby Alec res 1116 5th Ave S	2604
Derby W J res 638 10th St S	2652
Dewar Wm res 334 19th St N	4081

DIAMOND T TRUCK DEALERS

Bannerman Motors 816 4th Ave S	2045
--------------------------------	------

Dick Bernard J	91-4021
Dick G H res 715 8th St S	3227
Dick John J	91-2725
Dickie E S res 1249 6th Ave-A S	2912
Diller C K res 901 9th St S	4087
Dimmer & Hopp Service Station 3 Ave & 9 St S	3038

DIMOCK DR H C Physician & Surgeon

108 McFarland Bldg	4306
Dr H C Dimock res 1231 6th Ave-A S	2949

Doadt D L res 612 14th St S	2679
Dobbin C R res 538 7th St S	3439
Dobbs S H res 836 12th St S	2101
Dodd George res 411 12th St-C N	2630
Dodd Mrs Gertrude res 523 12th St N	3393
Dodd W A Tailor 309 13th St N	2810

DODD'S AUTO ELECTRIC

405 4th Ave S	3250
George Dodd Mgr res 411 12th St-C N	2630

DODGE-DE SOTO SALES & SERVICE

313 7th St S	3736
Doe Mrs K L res 615 5th St S	4134
Doerksen B B	91-2313

W. G. KING — Electrical Contractor
 MOTOR RE-WINDING AND REPAIRING
 MINE WORK ■ HOUSE WIRING ■ GENERAL CONTRACTING
 Phone **4373** — 425 - 13th St. S. — Phone **4373**

STEVE'S
TAXI 4058
 24-HOUR SERVICE

Dogterom C 91-1631
 Dogterom John W res 945 7th St S 3031
 Dogterom W H res 1807 6th Ave N 2455
 Domeier J res 1010 12th St S 2013
 Domeier W res 1713 5th Ave-A N 2863

DOMINION BEAUTY SUPPLY CO

Alberta Block 2250
 Dominion Government Dept of Agriculture
 Prairie Farm Rehabilitation W Wotherspoon
 Dist Engineer Post Office Bldg 2044
 Prairie Farm Assistance Branch
 5 Metropolitan Bldg 3048
 Veterinary Laboratory Post Office Bldg 3810

Dominion Government Dept of National Defence

Lethbridge Garrison
 Trades Training School 3804
 R.C.A.S.C. Supply Depot 2647
 Garrison Hospital 413 14th St S 2985
 Lethbridge Armoury Cor 6th Ave & 6th St S 2650

Dominion Government Dept of Transport

Civil Aviation Division
 District Airway Engineer Post Office Bldg 2290
 Dist Insp Western Airways Post Office Bldg 3802
 Maintenance Radio Branch Sherlock Bldg 3840
 Meteorological Radio Office—Kenyon Field 4334
 Traffic Control Office—Kenyon Field 2226
 Dominion Meat Market Hill Bldg 2654

DOMINION RUBBER CO LTD

Bay Super Service Station 3580
 Donald David res 627 9th St S 3361
 Donald J A res 1312 4th Ave N 3702
 Donaldson C S res 924 7th Ave S 3389
 Donaldson Mrs Isabelle res 1242 7th Ave S 2059
 Doran J W res 743 12th St-B N 2703
 Dorwin Mrs S R res 633 5th St S 3725
 Dow Jas 91-1941
 Downer F W res 1 Strathcona Court 3606
 Downing J C res 1262 7th Ave S 2263
 Downs J H 91-1523
 Doyle Larry res 7 Eldean Apts 3687
 Draffin George res 318 10th St S 4171
 Drinkall W H 91-1623
 Drowley Georgina res 615 11th St S 2677
 Drysdale James res 802 7th St S 2304



Dueck Jacob P 91-4012
 Dueck Peter P 91-2341
 Duff Arthur res 914 12th St S 3126
 Duff Donald A res 750 7th Ave S 2004
 Duffy P E res 542 7th St S 3283
 Duncan Claude A res 1302 7th Ave S 4342
 Duncan Claude A 91-1113
 Duncanson F R res 613 13th St S 3235
 Dunlop R res 1252 4th Ave S 4168

DUNLOP TIRE & RUBBER GOODS

CO LTD 7th St S 4353

DUNN'S TAILORS Agts Stan's Men's Shop

327 5th St S 3730
 Dupen A E New Barnes Mine 91-3011
 Dupen A E res 625 7th St S 3418
 Dutton E E res 528 15th St S 3665
 Dutton S V H res 7 Tudor Manor 3820
 Dutton W res 1253 6th Ave S 3983
 Dykes Andrew M res 331 20th St N 2495
 Dykstra H D 91-1432

E

Easton John res 917 8th St S 2411
 Easton T res 709 12th St S 2641

EATON CO WESTERN LTD (THE T)

Branch Store 4th Ave & 6th St S
 Information & General Office 3727
 Drugs Hosiery Men's Wear Notions 2140
 Foodateria (Groceries Fruits Vegetables) 3282
 Meats & Fish 2657
 Hardware Automobile Supplies Stoves 2054
 Sporting Goods China Baggage Piece Goods
 Shoes Optical 3857
 Wools Fancy Goods Women's & Children's Wear 3605
 Furniture House Furnishings Radios 2722

ECONOMY GROCERY J W Moss

902 9th St S 2035
 Economy Meat Market 904 7th Ave S 3855
 Edmunds Mary res 938 7th St-A S 3027
 Edmundson Fred res 1203 5th Ave-A S 4388

EDWARDS WM M Land Surveyor

11 Oliver Bldg 4034
 Edwards Wm M res 529 14th St S 3979
 Egardie Mrs M res 931 10th St S 3965
 Eichenlaub Rev V res 710 16th St N 4336
 Eldridge P M res 1314 4th Ave S 2794

ELECTROLUX (CANADA) LTD

1-3 Royal Bank Bldg 2402
 Elfstrom H res 318 4th St S 2849
 Elks Club 5th Ave S 2633
 Elliott Jack W res 1105 3rd Ave S 4089
 Elliott Oliver G res 1305 7th Ave S 4019
 Ellis H J res 636 12th St S 2499

ELLISON MILLING & ELEVATOR

CO LTD 2nd Ave S
 Sales Flour & Feed 2068
 Grain Dept 4214
 Manager & Accounting Dept 3552
 Elevator—Coaldale 91-2514
 Elevator—Coalhurst 91-3424

FAT'S TAXI 3838

STEVE SMERK
24 HOUR SERVICE

Ellison R C res 1243 6th Ave-A S 4350
Eltherington Geo R res 533 13th St S 2269

ELTON DAVID HORTON K.C.

Barr Solr Notary Public 2 & 4 Stafford Blk 2523
Elton David Horton res 1209 7th Ave S 3709
Emma's Hot Tamale Parlor 318 3rd Ave S 2763

EMPLOYMENT SERVICE OF CANADA

243 7th St S 2603
Empress Confectionery 814 4th Ave S 2872
Enns Jacob 91-4014
Entomological Branch Post Office Bldg 3222
Laboratory 91-1515
Epp Dr D L Phys & Surg Office 91-2422
Epp Dr D L 91-2415
Erb M E res A - Rosedale Apts 3710
Erdmann Ralph res 1221 7th Ave S 4104
Erickson M res 814 2nd Ave S 3873
Evans T res 611 8th St S 3275
Evernden C S 91-2532
Everson W C res 524 12th St-C N 3908
Everson W E res 14 St & 5th Ave S 2484
Ewart D 91-2822
Experimental Farm W H Fairfield Coaldale Rd 3385

EXPLOSIVES LTD Hoyt Hardware Ltd

Agts 608 3rd Ave S 3860

F

FAIRBAIRN L E Barr Solr & Notary

Bank of Nova Scotia Bldg 4065
Fairbairn L E res 922 3rd Ave S 2249
Fairfield W H Office & Res Experimental Farm 3385
Fallwell George res 604 7th Ave S 4233

FARMERS' MARKET Hudson's Bay Bldg

Cor 1st Ave & 5th St S 3058
Farrell R res 213 5th Ave S 2592
Farrell W J res 527 14th St S 3023
Farries John 91-1013
Farris R C res 281 7th Ave-A S 2031
Farris Service Agency Collins & Acctg 2 Acadia Blk 2616
Farstad C W res 1252 6th Ave-A S 2119

FAT'S TAXI S Smerek 323 5th St S

..... 3838
Faulkner E res 701 12th St N 2130
Faunch E J res 924 10th St S 2590

FEFFERMAN HIDE & FUR CO

518 4th Ave S 4035
Fefferman M res 704 6th Ave S 2318
Fekete William res 512 5th St S 3261
Felger T H res 1304 6th Ave S 2083
Ferguson J res 312 15th St S 3306
Ferguson James Y res 1809 1st Ave-A N 3910
Ferrier J J res 419 8th St S 3969

GARRETT FURRIERS

FURS OF QUALITY

AT
POPULAR PRICES

REMODELING - REPAIRING - RELINING
COLD STORAGE - CLEANING - GLAZING

HULL BLOCK - Phone 3812

Filchak Vincent res 545 12th St N 2682
Filmer J res 922 12th St S 3217
Findlay A res 1415 3rd Ave N 4365

FIRE DEPARTMENT (Fire only)

..... 3333
First Baptist Church 8th St & 4th Ave S 2082
Firth H res 715 17th St N 3731
Firth J J res 502 14th St S 3870
Fisher A M res 1217 6th Ave S 2531

FISHER AUTO BODY WORKS

312 9th St S 3941
Fisher Ralph res 327 13th St N 4389
Fitzsimmons H H 91-4135
Fleetwood Confectionery K Soady 902 11th St S 3625
Fleetwood E H res 920 9th Ave S 3985
Fleetwood T H res 803 11th St S 3795
Fleming A res 312 14th St S 3703
Fleming Mildred res 312 3rd St S 2070
Fletcher Dr C M Dentist 5 Oliver Blk 3410
Fletcher Dr C M res 638 15th St S 3673
Flett U A res 6 Victoria Mansions 2638
Flinn Wm res 1259 5th Ave-A S 3245
Flock H J res 1301 5th Ave S 4317

FLOCK'S FUNERAL HOME

1110 3rd Ave S 2929
Ambulance Service
Fong Edward res 308 1st Ave S 2932
Fooks J H res 1234 4th Ave S 3511
Forbes Dr G H res 284 7th Ave S 3771
Ford C H res 721 3rd St S 3241

FORD SALES & SERVICE

435 5th St S 3633
Forrest J A res 628 7th St S 3372
Forster Agency The 306 7th St S 2793
Forster C E res 612 13th St S 4181
Forster E R J res 626 10th St S 3883
Forster Fred res 1240 5th Ave-A S 4156
Forsyth James E Cartage Contr 1903 3rd Ave S 2729
Foster Frank 91-2533
Foster Flt Lt N E res 916 6th Ave S 4142

FOUR X BAKERY

(See Canadian Bakeries Ltd) 3266
Fourth Avenue Hairdresser 512 4th Ave S 4217

STOP
AT
T

TED'S TERMINAL

"SMILE A MINUTE SERVICE STATION"

IMPERIAL, 3 STAR & ESSO GASOLINE

MARVELUBE & MOBILOIL MOTOR OIL

410 - 3rd Ave. S.

ATLAS TIRES

Phone 2684



PHONE:

"SAFE MILK IS PASTEURIZED"

4124 - Purity Dairy

Milk - Cream - Butter - Buttermilk - Cottage Cheese



STEVE'S
TAXI 4058
24-HOUR SERVICE

FOWLER DR DOUGLAS B Phys &
Surg Hull Blk 2622
Dr Douglas B Fowler res 1403 5th Ave S 4356

FOWLER'S GREENHOUSES
730 6th St S 3179

Fox Mrs Constance res 1219A 4th Ave S 3255
Fox G H res 626 15th St S 3931
Fox George W res 1413 4th Ave S 2034
Fox Norman res 329 15th St N 3988
Fozard Mrs John res 530 12th St-B N 2790

FRACHE BROS LTD Florists Retail
Store 322 6th St S 2666
Greenhouses Henderson Park 2003
Greenhouses North Lethbridge 2768

Frayne Elsie res 1414 4th Ave N 4193
Frear Mrs Esther res 631 5th St S 4198
Frear H C res 526 5th St S 2458
Freel James res 405 4th St S 3793
Freel Rodina res 321 6th Ave-A S 2181

FREEL SHEET METAL WORKS
412 4th Ave S 2713

FREIGHTWAYS CANADIAN
518 5th St S 2945

Frey E E 91-2924
Frey I res 732 13th St S 3720
Frier S res 1401 6th Ave-A N 2629
Friesen Garage J C Friesen 91-2522
Friesen J C 91-2525

FRIGIDAIRE Sales & Service
Roy Electric Co 406 5th St S 3735
Fumerton Dr A S Dentist 3 Oliver Blk 2199
Fumerton Dr A S res 634 15th St S 2718

G

Gaetz L O res 909 8th Ave S 3916
Gahn K W res 511 12th St S 2623
Galbraith Mrs W S res 616 14th St S 2253
Galdzinski J res 284 7th Ave-A S 2564
Gallinger A res 621 10th St S 4290

Jones
LONG DISTANCE MOVING
PHONE 2904
STORAGE

GALT HOSPITAL General Office 5th Ave S 3136
Private Branch Exchange connecting all Depts
Residence 204 5th Ave S 2608

GALT SERVICE STATION
cor 4th Ave & 9th St S 2728

GARBUTT BUSINESS COLLEGE
Mrs S R Bennett Principal Masonic Hall Bldg 2315
Garden Clothing Co 318 5th St S 4210

GARDEN HOTEL 510 3rd Ave S 3889
Gardiner C res 606 11th St S 2962
Gardner R W res 301 6th Ave-A S 2446
Gareau A H res 513 12th St N 4285

GARRETT FUR STORE 707 3rd Ave S 3812
Garvin Rev E L res 803 6th Ave S 4303

GAS COMPANY 420 6th St S 2510
Gates W H res 1253 6th Ave-A S 2514
Gaught H res 408 12th St-B N 3274
Gavron Michael res 721 16th St N 2975
Geiger C res 1265 5th Ave-A S 3668

GENERAL GARAGE & AUTO PARTS
320 9th St S 2685

George L B res 1105 7th Ave S 2868
Ghert Joe res 643 8th St S 4082
Gibbons Miss G I res 509 14th St S 2597
Gibbons R V Agencies Metcalfe Bldg 2191
Gibson Chris res 1405 9th Ave S 2983
Gibson Mrs I res 1237 6th Ave-A S 4321
Gibson Miss M res 1607 7th Ave S 4137
Gibson Dr M J Dentist 5 6 & 7 Lafferty Blk 2071
Gibson Dr M J res 610 8th St S 2896
Gilchrist Lee res 202 15th St N 2362
Gillespie S J res 637 7th St S 4125
Gilmour R res 901 9th Ave S 3149
Gladden R F res 3 Galt Manor 3515
Glasser G res 722 17th St S 3894
Glazer D res 519 6th St S 2141
Glock's Jewellery Store 604 3rd Ave S 4037

GLOER ELECTRIC 817 3rd Ave S 2669
Glover R M res 414 5th Ave S 2538
Godfrey K S res 510 19th St N 2948
Gogan J J res 144 16th St N 2670
Goldie J S res 307 7th Ave S 4263
Goodall C F res 617 14th St S 2749
Goodman E res 706 3rd Ave S 2457
Goodman Morris res 322 5th Ave S 2148
Goodyear Tire & Rubber Co H R Carson Ltd
Distributors 316 7th St S 3155
Gordon James res 412 12th St-C N 3950

GORDON DR W H A Phys & Surg Hull Blk 2622
Dr W H A Gordon res 542 8th St S 4287
Government Beer Warehouse 1st St & 2nd Ave S 3554
Government Liquor Store 411 3rd Ave S 3989

GOVERNMENT TELEPHONES
See Alberta Government Telephones

Gow G res 1210 3rd Ave S 4394
Graham Austin W Upholsterer 635 6th St S 3470
Graham John M 91-2515
Graham W & J 91-2413