



# TELEPHONE DIRECTORY

## LETHBRIDGE

## & DISTRICT

### Alberta Government Telephones JANUARY, 1941

Information

**3727**

**THE T. EATON CO.**  
WESTERN LIMITED  
BRANCH STORE

Information

**3727**

Drugs, Hosiery, Men's Wear, Notions .....2140

Groceteria, Meats, Fruits.....3282

Hardware, Automobile Supplies, Stoves .....2054

Wools, Fancy Goods, Ladies' and Children's Wear.....3605

Sporting Goods, China, Baggage.....3857

Piece Goods, Shoes, Optical.....3857

Furniture, House Furnishings, Radios.....2722



PHONE  
**2576**

Milk  
Cream

**Crystal Dairy**  
LIMITED

*The Home of Pure Dairy Products*

■ **TASTE THE DIFFERENCE** ■

FARMERS:—We Solicit Your Shipments of Churning Cream

PHONE  
**2577**

Ice  
Cream





# BIJOU TAXI 2750

And U-Drive Cars

W. HOSELTON, Prop.



50c. AND UP

# FAT'S TAXI

STEVE SMEREK

PHONE

# 3838

323 - 5th St. So.

24 HOUR SERVICE

HEATED CARS

## HOTEL ALEXANDRA

PHONE

3142

*Air Conditioned*

FREE LOCAL CALLS • CENTRALLY LOCATED

PHONE

3142

# MARQUIS TAXI

CITY  
TRIPS

50c

PHONE

# 3545

OFFICE  
MARQUIS  
HOTEL



FOR  
A QUICK START | CLEANER MOTORS  
GREATER MILEAGE

USE

“Seventy-Seven ‘Power’ Gasoline”

IT'S DUBBS CRACKED ■ IT'S DIFFERENT ■ IT'S BETTER

Marketed in Alberta Exclusively by

SEVENTY-SEVEN OIL COMPANY

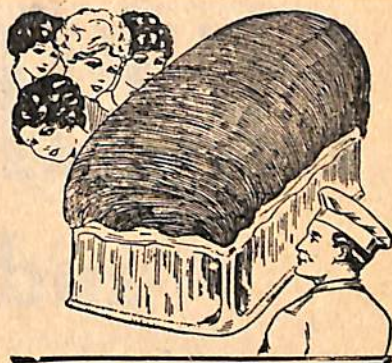
Phone 2775

**McGAVIN'S**

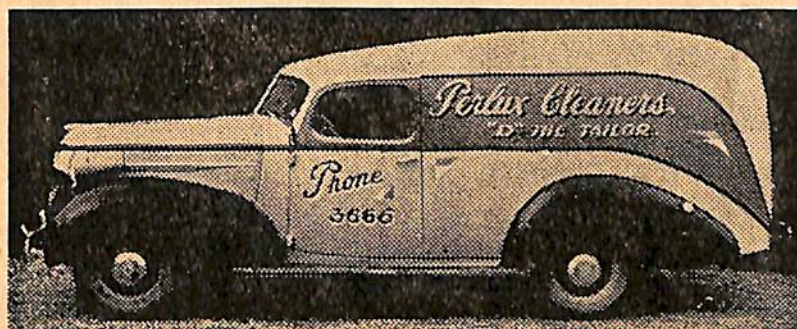
GOOD BREAD & CAKES

PHONE

**3378**



## DE LUXE CLEANING



Alterations  
and  
Repairs

■  
NIXON & SWAN  
Props.

■  
2 Doors North of  
Capitol Theatre  
PHONE

**3666**

## EMERGENCY CALLS

FIRE  
3 3 3 3

POLICE  
2 1 4 5

GAS  
2 5 1 0  
Night 2439

LIGHT  
3 6 4 5  
Night 2404

WATER  
3 5 4 1  
Night 3731

## Telephone Service Calls

INFORMATION  
9 2

LONG DISTANCE  
0

TROUBLE  
9 3



ALBERTA GOVERNMENT TELEPHONES

---

# TELEPHONE DIRECTORY

OF

# LETHBRIDGE

## and District

JANUARY, 1941

---

**HEAD OFFICE:** C.P.R. Building, Edmonton

---

**HON. W. A. FALLOW**

Minister of Railways and Telephones

**J. D. BAKER**

General Manager

**A. M. MITCHELL**

Comptroller

**W. C. BRUCE**

General Plant Superintendent

**W. B. FERGUSON**

General Traffic Superintendent



# Alberta Government Telephones

Head Office: C.P.R. Building, Edmonton  
Lethbridge Office: 808-810 4th Avenue South

## HOW TO TRANSACT BUSINESS

With the Department of Telephones

### APPLICATIONS FOR NEW SERVICE—CHANGES IN LOCATION— TERMINATION OF SERVICE

All matters relating to new telephone service, removals, termination of service, directory listings, adjustment of accounts, collection of bills, etc., are handled at the Business Offices of the Department.

### CHANGES IN DIRECTORY LISTINGS

This telephone directory is issued regularly twice a year. Notification as to new listings, changes or corrections should be made to the Local Office at once.

### DIRECTORY ADVERTISING

For information as to space or rates for Directory advertising, please communicate with Local Business Office.

### SERVICE DIFFICULTIES

Below are shown the telephone numbers or persons to be called to report service difficulties. If at any time difficulties are not promptly corrected call the Manager of your Central Office:

#### INFORMATION—

For Information regarding New Subscribers and Changes of Telephone Numbers ..... Call "Information" Dial 92

#### TROUBLE—

To Report Telephone Out of Order or unsatisfactory Local Service ..... Call "Trouble" Dial 93

To Report Unsatisfactory Long Distance Service ..... Call "Chief Operator" Dial 98

For District Traffic Superintendent ..... Dial 4221

#### LONG DISTANCE—

To Call Long Distance Operator ..... Dial 0

## TERMS AND CONDITIONS

Under Which Telephone Service is Furnished

### USE OF TELEPHONE

1. The service furnished is for the exclusive use of the subscriber and members of the subscriber's household or the subscriber's employees upon the subscriber's business, and the subscriber shall not extend the use of the telephone to any other person, nor shall the subscriber transmit messages for any other person; and if a residence telephone is used for business or professional purposes the Department may charge therefor the rate charged for business or professional telephones. The residence telephone number of a subscriber may be advertised only in conjunction with the advertising of his business telephone number.

The Department will endeavor to keep the lines and instruments in good working order and undertakes to clear trouble or make repairs with all reasonable despatch, but does not guarantee uninterrupted service.

The right of the subscriber is to use the instruments and connecting lines where the Department may place them, but not elsewhere, under such rules as the Department may from time to time prescribe.

The use of obscene, profane or abusive language while using the telephone is strictly forbidden and service may be immediately discontinued for violation of this rule.

2. The instruments and all accessories connected therewith shall remain the property of the Department and the subscriber shall not remove, alter, or make any attachment thereto; and the subscriber agrees to compensate the Department on demand for any damage, loss or destruction of the Department's instruments and accessories whilst such instruments and accessories are in or upon the premises of the subscriber.



## CONSTRUCTION

3. When it is necessary to erect poles or anchors in order to carry the wires from the main telephone line on the road allowance or street to the applicant's premises, such poles and anchors in connection therewith will be supplied and erected by the Department at the expense of the applicant.

## CHARGES — HOW PAID

4. All charges for installations, moves, and monthly rentals shall be paid in advance, which shall entitle the subscriber to service with all subscribers connected to the same exchange. Regular toll rates will be charged for all service to points outside of the exchange.

5. Subscribers shall pay the installation charges, first rental instalment (and construction charges, if any) strictly in advance. Excess mileage charge will be added if outside of exchange limits. If subsequent rental accounts remain unpaid after the 15th of the month, service shall be discontinued and no rebate or reduction shall be allowed for such interruption to service.

6. Subscribers shall pay monthly, at schedule rates, for all messages and conversations over the Long Distance lines. If said accounts remain unpaid after the 15th of the month, further credit shall be refused until account is paid.

7. Subscribers shall pay promptly, upon presentation of account, all charges for other miscellaneous items. If these charges are not paid within 15 days, service shall be discontinued.

## COMPLAINTS RE LONG DISTANCE SERVICE

8. While the Department will carefully consider complaints in connection with toll service at any time received, it would be appreciated if subscribers would make such complaints immediately after conversation has taken place.

## VACATION ALLOWANCE

9. Should a subscriber desire to have his Exchange Residence Service temporarily discontinued, owing to the closing of his residence, he may do so without cancelling contract or having telephone removed, and, if arranged for in advance in writing, an allowance of two-thirds of the rate per month will be made for a period of not less than one month and not exceeding three months in any one year. Subscriber shall state, when making application, the period for which he expects to be absent and shall pay for this period in advance. Subscriber will notify the Department when he wishes service resumed, either in writing or by calling at the office and signing re-connect order. Owing to the fact that Multi-Party Line Telephones cannot be disconnected without a special trip being made to their location, this regulation will not apply to Multi-Party Line Service.

## MOVES

10. The telephone is first located where the subscriber directs and must not be moved or interfered with. When the subscriber desires to have the telephone moved to any other location, notice in writing should be given to the local office, at least ten days before the change is desired. The work will then be done as promptly as possible at regular charges.

## JOINT USER SERVICE

11. A joint user is a person, firm or corporation who shares the subscriber's exchange service in accordance with tariff provisions. To facilitate this use of service, a directory listing is included.

Business joint user — one-third of business wall-set rate.

Residence joint user—50c per month.

## CANCELLATION OF SERVICE

12. Subscribers giving up service must notify the Department in writing, or call at office and sign "Take Out" order. Failing to do this, subscriber will be liable for all charges up to date instrument is removed or taken over by a new subscriber.

## DIRECTORIES

13. The Department of Telephones assumes no liability on account of errors in or omissions from its directories. Telephone directories are and remain the property of Alberta Government Telephones. They are printed for the exclusive use of the Department's patrons and are loaned to its subscribers. All persons are cautioned against reproducing their contents, which are fully protected by copyright. Subscribers must not use any binder, holder or other attachments, except as provided by the Department.

## TELEPHONE NUMBERS

14. A subscriber's telephone number is not a part of the application for service, but numbers will only be changed when absolutely necessary or for the betterment of the service.



# HOW TO USE THE TELEPHONE

## AUTOMATIC TELEPHONE

Consult the Telephone Directory for the correct number before you make a call. Do not trust to your memory.

Call "92" for Information if the person or firm you wish to call is not listed in the Directory.

1. Remove the Receiver.—Be careful not to move the hook at any time during the call.

2. Listen for the Dial Tone.—This is a steady humming sound, when received it indicates that the equipment is ready for you to dial.

3. What to Dial.—It is necessary to dial each figure of the number in rotation.

4. How to Dial.—Suppose you are calling 2301. To dial this number proceed as follows:—

- (1) Remove receiver and listen for the dial tone.
- (2) Place your finger in the hole over the figure "2".
- (3) Turn the dial around until your finger strikes the finger stop, then lift your finger and allow the dial to return to rest without touching it.
- (4) Repeat this operation for the figures 3-0-1. If you find that you have made an error before you have

completed dialing, hang up the receiver for a few seconds, then remove the receiver, listen for the dial tone and after hearing it, dial your call again.

5. Ringing and Busy Signals.—After you have finished dialing you should hear in the receiver either the ringing signal (an intermittent burr-rr-ing sound) indicating that the called telephone is being rung, or the busy signal—a rapid buzz-buzz-buzz—indicating that the called line is busy.

If you hear the ringing signal and receive no answer within a reasonable period, hang up the receiver and call later.

If you hear the busy signal hang up the receiver and after waiting a reasonable length of time call again.

If you hear neither signal within half a minute, hang up the receiver for a few seconds, then remove it and dial again—If the same condition is found after several attempts, dial "93" and report the condition to "Trouble" operator.

6. After You Have Finished Talking.—Hang up your receiver—This will disconnect you from the called telephone. Leave your receiver on the hook for a few seconds before starting to make another call.

## AUTOMATIC EXCHANGES

Information:—Call Information "92" for numbers of New Subscribers, Changes, Long Distance Line Charges, New Toll Offices, etc.

Trouble:—Complaints regarding Telephone Troubles should be reported to Trouble Operator, Telephone No. 93. When reporting trouble give telephone number affected and its location, also state as accurately as possible just how trouble manifests itself. Try to be specific, as incomplete information frequently causes delay in locating nature of trouble.

If a line you are trying to call repeatedly tests "busy," notify Trouble Operator, who will investigate whether same is caused by an abnormal condition on line, or from use. If any line appears too busy for good Service, write to the District Commercial Superintendent. Subscribers are requested not to engage Trouble or Information Operators in conversation longer than necessary, as by so doing the operator will be prevented from giving prompt attention to other patrons.

## MANUAL TELEPHONE

Consult the Telephone Directory for the correct number before you make a call. Do not trust to your memory.

Ask for "Information" if the person or firm you wish to call is not listed in the Directory.

1. To Call the Operator give one long ring before removing the receiver from the hook and then hold the receiver to the ear.

2. When the Operator Replies by saying, "Number?" give the number of the subscriber's telephone desired, slowly and distinctly.

Example:—"1429" should be pronounced "one-four-two-nine." "175" should be pronounced "one-seven-five."

3. Face the Transmitter with the lips almost touching the mouthpiece. Speak naturally, distinctly and not too rapidly.

4. Keep the Receiver to the Ear, and the Operator, after repeating the number, will connect you with the subscriber called for. If the desired line is found to be in use the operator will report "Line Busy."

5. When You Have Finished Talking place the receiver on the hook, small end up, and give a short ring.

This gives the operator a signal to disconnect and you are then in a position to call another number or to be called.

NOTE:—At Camrose, Lacombe, Lloydminster, Hanna and Wetaskiwin (Common Battery Exchange) no ringing, except by rural line subscribers, is necessary. Simply remove receiver from hook and in all other respects proceed as instructed above, placing the receiver on the hook when conversation is finished.

6. Do Not Use the Telephone during a thunderstorm.

7. Rural Line Subscribers should limit their conversation to Five Minutes' duration and must not "listen in" to conversation not intended for them, as it interferes with the Service.

Complaints:—Complaints regarding telephone trouble and unsatisfactory Service should be made to the Local Manager, Agent or Chief Operator at the Office concerned, and if not rectified within a reasonable time, the matter should be referred to the General Traffic Superintendent at Edmonton.



# LONG DISTANCE SERVICE

## RULES AND REGULATIONS

---

*To make a Long Distance Call, first call "Long Distance"—when the Long Distance Operator answers, give her your telephone number, followed by the details of your call as indicated below.*

### CLASSIFICATION OF LONG DISTANCE SERVICE

#### 1. STATION-TO-STATION CALLS

The Station-to-Station rate applies when it is not desired to establish communication between particular persons.

Station-to-Station calls must be made by number whenever Telephone Directory information covering the called point is available. When such information is not available, the name or address under which the telephone is listed should be given, specifying that "anyone at that number will do."

EXAMPLE:—"4567, J. H. Brown speaking, I want to speak to Springdale, 684," or "I want to speak to Springdale, anyone at Mr. John Jones' residence (or business) telephone."

#### 2. PERSON-TO-PERSON CALLS

(Except for points in Manitoba, British Columbia, Eastern Canada and the United States, evening and night rates do not apply to Person-to-Person Service.)

When a Long Distance Call is made, specifying that conversation is desired with a particular person and the connection is established and conversation held with that person, the "Person-to-Person" rate applies.

EXAMPLE:—"4567, J. H. Brown speaking, I want to speak to Springdale, 684, Mr. John Jones," or "If Mr Jones is not there, I will speak to Mr. A. F. Smith."

NOTE:—When a particular person is desired, the Long Distance operator must be so advised when the call is placed, otherwise charges will be made from the time connection is established with the telephone desired, whether the party is obtained or not.

#### Appointment Calls

An Appointment Call is a Person-to-Person call requiring communication to be established at a specified time, and order should be given to the Long Distance operator in the usual manner.

#### Messenger Calls

A Messenger Call is a Person-to-Person call, necessitating the services of a Messenger to secure the attendance of a specified person, and order should be given to the Long Distance operator in the usual manner. The Messenger Service and Report charges in such cases must be prepaid by the calling party if the call is placed from a Public Pay Station.

#### Collect Calls

Collect calls are Person-to-Person or Station-to-Station Calls, the charges for which are reversed, i.e., to be collected from the called party. In such cases the assent of the called party shall be obtained before the connection is established.



# LONG DISTANCE SERVICE

## RULES AND REGULATIONS—Continued

### RATES AND CHARGES FOR LONG DISTANCE SERVICE

Long Distance Tolls will be charged to the subscriber from whose instrument the Long Distance call is placed, except those messages for which the receiving party expressly agrees to pay.

All rates quoted are for an initial period of three minutes. For over-time beyond the initial period a proportionate charge is made per minute.

The rates quoted on pages 8 and 9 are Station-to-Station Day Rates.

The Day Rate for a Station-to-Station call is the fundamental rate upon which the rates for other classes of Service are based.

The rate for a completed Person-to-Person Appointment or Messenger Call, including Written Messages and Telegrams, either Paid or Collect is approximately 25% higher than the corresponding Station-to-Station Day Rate.

Day rates only are used in computing charges on Person-to-Person, Appointment and Messenger Calls, including Written Messages and Telegrams.

#### Evening and Night Rates

Alberta & Saskatchewan—Reduced rates on Station-to-Station (anyone) calls are in effect from 7 p.m., to 12 Midnight, with a further reduction from Midnight to 4.30 a.m.

British Columbia, Manitoba, Eastern Canada and U.S.A.—Reduced rates are in effect from 7 p.m. to 4.30 a.m. including all day Sundays.

(NOTE:—In no case shall the Evening or Night rate, as the case may be, be less than 25c. for the initial period, unless the Day rate is less, in which case the Day, Evening and Night Rates shall be the same.)

#### Report Charges

Under certain conditions a Report Charge of approximately one-quarter of the Station-to-Station Day rate will be made on uncompleted Person-to-Person, Appointment and Messenger Calls, including Written Messages and Telegrams.

A Report Charge shall not be made on a Station-to-Station call except when the call is placed "Collect" and the charges have not been accepted.

### PAY STATION SERVICE

Pay Station Telephones have been installed by the Department for the convenience of subscribers and the general public, in suitable locations throughout the Province. Local conversations may be had from these telephones at a charge of 5 cents for 5 minutes. Long Distance Service is furnished at regular tariff rates upon deposit of the amount of the initial charge (covering three minutes' conversation) the usual charges being made for excess time.

Non-subscribers who desire to use Subscribers' telephones should be referred to the nearest Public Pay Station.

*If there is anything about our rates and practices you do not fully understand, please call our Local Manager or Chief Operator and they will be glad to explain.*



**To Places connected with the Long Distance Lines of the Alberta  
Government Telephones and Connecting Systems in Alberta.**

T0	Station- to-Station Day Rate 3 Mins.	T0	Station- to-Station Day Rate 3 Mins.	T0	Station- to-Station Day Rate 3 Mins.	T0	Station- to-Station Day Rate 3 Mins.
	\$ c		\$ c		\$ c		\$ c
Abee	1.95	Carbon	.80	Elk Point	1.80	Irricana	.75
Acme	.80	Cardston	.30	Ellscoff	2.10	Irvine	.75
Airdrie	.75	Carmangay	.25	Elнора	1.00	Islay	1.65
Alberta Beach	1.80	Carolside	.75	Empress	.95		
Alcomdale	1.80	Carrot Creek	1.80	Endiang	1.00		
Alderson	.50	Carstairs	.90	Entwistle	1.80	Jarrow	1.50
Alexo	1.50	Carvel	1.65	Erith	1.95	Jarvie	2.10
Alhambra	1.20	Castor	1.10	Erixon	1.15	*Jasper	2.85
Alix	1.15	Cavendish	.80	Esther	1.10	Jenner	.65
Alliance	1.20	Cereal	.95	Etter-McDougall	1.50	Judson	.20
Alsask, Sask.	1.05	Cessford	.70	Etzikom	.50		
Altario	1.20	Champion	.30	Evansburg	1.80		
Amber Valley	2.10	Chauvin	1.50	Evarts	1.15	Kapasiwin	1.65
Andrew	1.80	Cherhill	1.80	Exshaw	.85	Kaydee	1.95
Antross	1.50	Chinook	.90			Killam	1.35
Ardmore	2.10	Chip Lake	1.80			Kinsella	1.50
Armada	.35	Chipman	1.65			Kirriemuir	1.15
Armistice	1.80	Chisholm	2.25	Fallis	1.80	Kitscoty	1.65
Arrowwood	.50	Claresholm	.30	Fawcett	2.10	Knob Hill	1.50
Ashmont	1.95	Clive	1.20	Ferintosh	1.35		
Ashwell	1.95	Clyde	1.95	Flatbush	2.10	Lac La Biche	2.10
Athabasca	2.10	Coalspur	1.95	Flat Lake	1.95	Lacombe	1.20
Atlee	.75	Coal Valley	1.80	Foisy	1.80	Lac Ste Anne	1.80
Atmore	2.25	Cochrane	.80	Foothills	1.80	Lafond	1.80
		Cold Lake	2.10	Foremost	.40	Lamont	1.80
		Columbine	1.95	Forestburg	1.35	Langdon	.60
Banff	1.00	Compeer	1.20	Fort Assiniboine	2.10	Lavoy	1.65
Barons	.20	Comrey	.65	Fort Kent	2.10	Leduc	1.50
Barrhead	1.95	Condor	1.20	Fort Saskatchewan	1.80	Legal	1.80
Bashaw	1.20	Conrad	.30	Fraspur	1.50	Legend	.40
Bassano	.50	Consort	1.15	Freedom	1.95	Leo	1.00
Battle Lake	1.50	Cooking Lake (North)	1.65			Leslieville	1.35
Bawlf	1.35	Cooking Lake (South)	1.65	Gadsby	1.10	Linaria	1.95
Beacon Hill	1.95	Coronado	1.80	Gainford	1.80	Lindbergh	1.95
Beauvallon	1.80	Coronation	1.10	Galahad	1.20	Lisburn	1.80
Beaver Crossing	2.10	Coutts	.40	Gleichen	.55	Little Gem	1.00
Bellis	1.95	Cowley	.35	Glendon	1.95	Lloydminster	1.65
Benalto	1.20	Craigmyle	.85	Glenevis	1.80	Lomond	.30
Bentley	1.20	Cremona	.90	Glenwood	.25	Longview	.55
Big Fish Lake	1.80	Crossfield	.85	Gorman	2.25	Lonira	1.95
Big Valley	1.00	Czar	1.35	Grand Centre	2.10	Looma	1.65
Bindloss	.85			Granum	.25	Lougheed	1.35
Blackie	.45			Grassy Lake	.35	Lunnford	1.95
Blairmore	.45			Green Court	1.95	Luscar	1.95
Bloomsbury	1.95	Dakin	2.10	Gull Lake	1.20		
Blue Ridge	1.95	Dapp	1.95	Gunn	1.80	Mackay	1.80
Bon Accord	1.80	Davis	1.95			Macleod	.20
Bonnyville	1.95	Daysland	1.35	Halkirk	1.10	Magnolia	1.80
Bordenave	1.95	Deep Creek	2.25	Hanna	.85	Magrath	.15
Bow Island	.45	Delburne	1.10	Hardisty	1.35	Mallaig	1.95
Bowden	1.00	Delia	.85	Hay Lakes	1.50	Ma-Me-O Beach	1.50
Bowell	.55	Derwent	1.80	Heaton Moor	1.95	Manly Highway	1.65
Bowmantown	.70	Deville	1.65	Heinsburg	1.80	Manola	1.95
Box Springs	.65	Didsbury	.90	Heisler	1.35	Manville	1.65
Boyle	2.10	Donalda	1.20	Hemaruka	1.00	Manyberries	.65
Boyne Lake	1.95	Donatville	2.10	Hespero	1.20	Markerville	1.10
Bragg Creek	.75	Doucette	1.80	Highridge	1.95	Mayerthorpe	1.95
Grant	.45	Drumheller	.75	High River	.50	McLaughlin	1.65
Breezelawn	.55	Duchess	.55	Hilda	.85	Meadowview	1.95
Bretton	1.50	Duclos	1.95	Hilliard			



TO	Station- to-Station Day Rate 3 Mins.	TO	Station- to-Station Day Rate 3 Mins.	TO	Station- to-Station Day Rate 3 Mins.	TO	Station- to-Station Day Rate 3 Mins.
	\$ c		\$ c		\$ c		\$ c
Minburn	1.65	Pembridge	1.95	St. Vincent	1.95	Thorsby	1.50
Mirror	1.20	Pemkan	1.15	Saddle Lake	1.80	Three Hills	.85
Mission	2.25	Pendant d'Oreille	.60	Sangudo	1.95	Tilley	.50
Morecambe	1.80	Pendryl	1.50	Sarrail	2.10	Tipperary	1.95
Morinville	1.80	Penhold	1.10	Saunders	1.50	Tofield	1.65
Morrin	.85	Perryvale	2.10	Schuler	.80	Trochu	.90
Mountain Park	1.80	Pickardville	1.95	Scollard	.95	Turner Valley	.60
Mulhurst	1.50	Picture Butte	.10	Scotfield	.90	Two Hills	1.80
Mundare	1.65	Pincher Creek	.35	Seba	1.80		
Munson	.80	Plains	1.95	Sedalia	1.00	Vale	.75
Musidora	1.80	Plamondon	2.25	Sedgewick	1.35	Vegreville	1.65
Myrnam	1.80	Pollockville	.70	Seven Persons	.55	Venice	2.10
		Ponoka	1.35	Shandro	1.80	Vermilion	1.65
Naco	1.00	Provost	1.35	Sheerness	.85	Veteran	1.10
Nanton	.40	Radway	1.80	Shoal Creek	1.95	Viking	1.50
Neerlandia	2.10	Rainier	.40	Sibbald	1.00	Vilna	1.95
Nelspur	1.50	Ray	1.80	Silver Bay	1.50	Vimy	1.95
Nemiscam	.45	Raymond	.15	Sinclair	2.10	Vulcan	.35
Nestow	1.95	Redcliff	.60	Sion	1.80		
New Bridgen	1.05	Red Deer	1.15	Skiff	.35	Wabamun	1.80
Newbrook	1.95	Redwater	1.80	Smoky Lake	1.95	Wainwright	1.50
New Dayton	.20	Retlaw	.25	South Cooking Lake	1.65	Wake-Shyre Lodge	.75
New Sarepta	1.50	Richards	2.10	Spedden	1.95	Walker	.65
Niton	1.95	Richdale	.90	Standard	.65	Walsh	.80
Nobleford	.15	Rife	1.95	Stanger	1.80	Wardlow	.65
Noral	2.10	Rimby	1.35	Stanmore	.90	Warner	.30
Nordeg	1.50	Rochester	1.95	Stavely	.35	Warspite	1.95
North Cooking Lake	1.65	Rochfort	1.95	Sterco	1.80	Waskatenau	1.95
Northville	1.80	Rockyford	.70	Stettler	1.15	Waterton Park	.45
		Rocky Mountain House	1.35	Steveville	.60	Wayne	.75
Okotoks	.55	Rosebud	.70	Stony Plain	1.65	Westerose	1.50
Olds	.95	Rose Lynn	.80	Strathmore	.60	Westlock	1.95
Onoway	1.80	Rosevear	1.95	Strome	1.35	Wetaskiwin	1.50
Opal	1.80	Ross	1.50	Suffield	.55	White Court	2.10
Orion	.60	Rossington	1.95	Sunnynook	.75	Whitla	.50
Owlseye	1.95	Rowley	.90	Sweet Grass, Mont.	.40	Wildwood	1.80
Oyen	.95	Royalties	.55	Sylvan Lake	1.15	Willington	1.80
		Rumsey	.90			Willow Creek	.75
Pashley	.70	Rush Lake	.70	Taber	.25	Winfield	1.50
Patricia	.55	Ryley	1.50	Tawatinaw	1.95	Winnifred	.50
Paulus	1.65	St. Albert	1.65	Therien	1.95	Wolf Creek	1.95
Paxson	2.10	St. Lina	1.95	Thorhild	1.95		
Peers	1.95	St. Paul	1.95			Yeoford	1.50
						Youngstown	.90

In addition to the points on pages 8 and 9 Long Distance Connection may be had also with the following places in Alberta and British Columbia, rates for which can be obtained by calling "Long Distance":—

## ALBERTA POINTS

Acadia Valley	Beaver Heights	Brightview	Cluny	Dog Pound
Acheson	Beaver Hills	Britain	Clymont	Doondale
Adkins	Beaver Lake	Brocket	Coaldale	Dorendee
Aerial	Beaver Mines	Brooksley	Coalhurst	Doris
Aetna	Beazer	Brownfield	Coleman	Dorothy
Agricola	Beddington	Brownlow's Landing	Colinton	Dowling
Albion Ridge	Beiseker	Broxburn	Commerce	Downing
Aldersyde	Bellevue	Bruderheim	Conjuring Creek	Drayton Valley
Alice Lake	Belyedere	Buffalo Head Ranch	Connaught	Duagh
Allerston	Bennett	Buffalo View	Copeville	Duffield
Allingham	Benton	Buford	Cornucopia	Duhamel
Amisk	Berrymoor	Burmis	Countess	Dunmore
Angle Lake	Beverly	Burnt Lake	Cousins	Dunshalt
Angus Ridge	Beynon		Crowfoot	Dunstable
Ankerton	Bircham		Cummings	
Anzac	Birdsholm	Cadogan	Custer	
Ardenode	Bismark	Calling Lake		Eagle Hill
Ardenville	Bittern Lake	Calverly	Dahmer	Earlie
Ardley	Black Diamond	Campbell Lake	Dalemead	Earling
Ardrossan	Blackfalds	Campsie	Dalroy	Earlville
Armenia	Blackfoot	Cappon	Darwell	Eastervale
Arneson	Blondheim	Cardiff	Davisburg	Eden Valley
Asker	Bluffton	Carlton Hill	Delacour	Edison
Avalon	Bodo	Caroline	Del Bonita	Edwell
Azure	Boian	Carseland	Demay	Elk Island
	Bonlea	Cassils	Desjarlais	Elk Island Park
Baintree	Bonnar	Cayley	Dewberry	Elkton
Balmoral	Borradaile	Chailey	De Winton	Elkwater Lake
Balzac	Botha	Chancellor	Diamond City	Ellerslie
Bardo	Bottrel	Cheadle	Dickson	Enchant
Barnwell	Bouyant	Chesterwood	Dina	Entice
Bathgate	Bow City	Chin	Dinant	Equity
Battle	Bradshaw	Clandonald	Dinton	Erskine
Battle Bend	Bremner	Clarinda	Dobson	Everett
Battleview	Bretona	Cleaview	Dodds	Ewelme
Beaumont		Clover Bar		



## ALBERTA POINTS—Continued

Excel	Hillcrest	Marwayne	Pleasant View	Stampede
Eyremore	Hill End	Masinasin	Poe	Stand Off
	Hillspring	Maughan	Poplar Ridge	Staplehurst
Fabyan	Hoadley	Maunsell	Poplar Site	Star
Fairacres	Hobbema	Maybutt	Pretty Hill	Sterlingville
Fairbank	Homeglen	Mayton	Priddis	Stirling
Fairfield	Horsehaven	Mazeppa	Princeton	Stobart
Fairydell	Horseshoe Lake	McDonaldville	Puffer	Stockland
Faith	Hualta	Meadowbank	Purple Springs	Strand
Falun	Hunterville	Meadow Creek	Quarrel	Strangmuir
Farming Valley	Hutton	Mearns	Queenstown	Streamstown
Farrow	Huxley	Menaik		Sugar Bowl
Federal		Merna		Sullivan Lake
Fedorah	Indus	Mewassin	Raley	Sulphur Springs
Fenn	Inga	Midland	Ranfurly	Summerview
Ferrybank	Ingleton	Midnapore	Raven	Sundre
Fishburn	Inverlake	Millarville	Redland	Sunnydale
Fleet	Irwinville	Miller	Red Lodge	Sunnyslope
Florann		Milnerton	Red Raven	Swalwell
Foreman	Jeffrey	Monarch	Red Willow	
Forest Lawn	Joffre	Monitor	Reid Hill	Talbot
Four Nine	Josephburg	Morgan	Reist	Taylorville
Frank	Jumping Pound	Morley	Rexboro	Tees
Frankburg		Morningside	Ribstone	Telfordville
Freeman River		Mossie	Rio Alto	Tempest
		Mossleigh	Rivercourse	Thelma
		Mound	Riviere Qui Barre	Throne
		Mountain View	Rockeling Bay	Tindastoll
		Murray Valley	Rocky Rapids	Tolland
			Rodino	Tomahawk
Gahern	Kahwin	Nacmine	Rolling Green	Tongue Creek
Garden Plain	Kaleland	Nakamun	Rolling Hills	Torrington
Garred	Kathryn	Namaka	Rosalind	Travers
Gartley	Kavanagh	Namao	Rosedale	Tudor
Gem	Kelsey	Neighborview	Roselea	Turin
Ghost Pine	Keoma	Nevis	Rosemary	Twin Butte
Gibbons	Kessler	Newcastle	Rosenheim	Twin Lakes
Gilby	Kessville	New Lindsay	Rosenroll	Twining
Gillen	Kew	New Norway	Ross Creek	
Gilpin	Kilbourn	New Oxley	Rosyth	Ulster
Gladys	Kimball	Nightingale	Round Hill	
Glenbow	Kingman	Nilrem	Rusylvia	Vauxhall
Glenford	Kippenville	Nisbet		Victoria
Golden Spike	Kirkcaldy	Nisku		Viewpoint
Good Hope	Knee Hill Valley	Norfolk Siding		Villeneuve
Good Luck		Northbank		Volmer
Gopher Head	Laconia	Northern Valley		
Grainger	Lake Demay	Northleigh	St. Kilda	
Graminia	Lake Isle	Norton	St. Michael	
Grand Valley	Lake Minnewanka		Saltaux	
Green Glade	Lake View	Ogden	Sammons	
Greenshields	Lamoureux	Ohaton	Sarcee	
Griesbach	Landonville	Olin Creek	Sather	
Grosmont	Lanfine	Olson Coulee	Scandia	
Groton	Lavesta	O'Mara	Scapa	
Gwynne	Lea Park	Orkney	Scotstoun	
	Leavitt	Orton	Seaforth	
Hackett	Leedale	Ouelletteville	Seebe	
Haigh	Leeshore	Oxville	Sexton Creek	
Hairy Hill	Lewisville		Sharples	
Hamlin	Liberty		Shaughnessy	
Handhills	Lindbrook		Sheep Creek	
Hardieville	Lineham		Shepard	
Harmattan	Livingston		Shonts	
Hart Siding	Lochend		Shouldice	
Hartell	Lockhart		Sidcup	
Hastings Coulee	Long Coulee		Silver Heights	
Haven	Lousana		Silver Lake	
Haynes	Lowe		Simons Valley	
Hayter	Loyalist		Skaro	
Hazeldine	Lucky Strike		Soda Lake	
Heath	Lundbreck		Southesk	
Heath Creek	Lyalta		Sponden	
Heather Brae			Springbank	
Heatherdown	Madden		Spring Coulee	
Helmsdale	Majorville		Springdale	
Herronton	Makepeace		Spring Lake	
Hesketh	Malmo		Spring Point	
Hetherington	Manfred		Springvale	
Highfield	Maple Leaf		Spruce Grove	
Highland View	Martins			
				Yarfield
				Yorkville

## BRITISH COLUMBIA POINTS IN THE CROW'S NEST PASS

Baynes Lake	Elko	Isadore Lookout	Lumberton	Natal
Bull River	Fernie	Jaffray	Marysville	St. Eugene Mission
	Fort Steele		McGillivray	
Coal Creek	Galloway	Kimberley	Michel	Wardner
Corbin	Hosmer	Kingsgate	Morrissey	
Cranbrook		Kitchener	Moyie	Yahk
Creston			Moyie Mountain	

For Long Distance Rates See Pages 8 to 11



# Rates to Certain Points in Canada and the United States of America

Rates to points not listed below may  
be obtained by calling Long Distance

## FROM LETHBRIDGE

TO	STATION-TO-STATION				PERSON-TO-PERSON				Report Charge
	DAY (Exc. SUN.)		NIGHT and SUNDAY		DAY (Exc. SUN.)		NIGHT and SUNDAY		Day, Night and Sun.
	3 Mins.	Add. Min.	3 Mins.	Add. Min.	3 Mins.	Add. Min.	3 Mins.	Add. Min.	
AKRON, OHIO	\$5.25	\$1.75	\$3.25	\$1.00	\$6.75	\$2.25	\$4.75	\$1.50	\$ .70
BALTIMORE, MD.	5.75	1.75	3.50	1.00	7.50	2.50	5.25	1.75	.75
BOISE, IDAHO	1.70	.55	1.05	.35	2.20	.70	1.55	.50	.35
BOSTON, MASS.	6.25	2.00	3.75	1.25	8.25	2.75	5.75	1.75	.80
BRANDON, MAN.	2.10	.70	1.25	.40	2.75	.90	1.90	.60	.40
BROOKLYN, N.Y.	6.00	2.00	3.75	1.25	7.75	2.50	5.50	1.75	.80
BUFFALO, N.Y.	5.25	1.75	3.25	1.00	6.75	2.25	4.75	1.50	.70
BUTTE, MONT.	1.15	.35	.65	.20	1.55	.50	1.05	.35	.25
CHICAGO, ILL.	4.25	1.25	2.50	.80	5.50	1.75	3.75	1.25	.60
CINCINNATI, OHIO	5.00	1.50	3.00	1.00	6.50	2.00	4.50	1.50	.70
CLEVELAND, OHIO	5.25	1.75	3.25	1.00	6.75	2.25	4.75	1.50	.70
DENVER, COLO.	2.75	.90	1.60	.50	3.50	1.00	2.35	.75	.45
DETROIT, MICH.	5.00	1.50	3.00	1.00	6.50	2.00	4.50	1.50	.70
DULUTH, MINN.	3.25	1.00	1.85	.60	4.00	1.25	2.60	.85	.50
GREAT FALLS, MONT.	.90	.30	.55	.15	1.25	.40	.90	.30	.20
HALIFAX, N.S.	7.25	2.25	4.50	1.50	9.50	3.00	6.75	2.25	.90
HELENA, MONT.	1.05	.35	.60	.20	1.40	.45	.95	.30	.20
KANSAS CITY, MO.	3.75	1.25	2.10	.70	4.75	1.50	3.10	1.00	.55
LOS ANGELES, CAL.	3.75	1.25	2.10	.70	4.75	1.50	3.10	1.00	.55
MILWAUKEE, WIS.	4.25	1.25	2.50	.80	5.50	1.75	3.75	1.25	.60
MINNEAPOLIS, MINN.	3.50	1.00	1.95	.65	4.50	1.50	2.95	.95	.55
MONTREAL, QUE.	5.75	1.75	3.50	1.00	7.50	2.50	5.25	1.75	.75
NEW YORK, N.Y.	6.00	2.00	3.75	1.25	7.75	2.50	5.50	1.75	.80
OAKLAND, CAL.	3.25	1.00	1.85	.60	4.00	1.25	2.60	.85	.50
OMAHA, NEB.	3.50	1.00	1.95	.65	4.50	1.50	2.95	.95	.55
OTTAWA, ONT.	5.50	1.75	3.25	1.00	7.25	2.25	4.75	1.50	.75
PHILADELPHIA, PA.	6.00	2.00	3.75	1.25	7.75	2.50	5.50	1.75	.80
PITTSBURG, PA.	5.50	1.75	3.25	1.00	7.25	2.25	4.75	1.50	.75
PORTLAND, ORE.	2.00	.65	1.15	.35	2.60	.85	1.75	.55	.35
REGINA, SASK.	2.25	.75	...	...	2.80	.90	...	...	.60
SAINT JOHN, N.B.	6.50	2.00	4.00	1.25	8.50	2.75	6.00	2.00	.90
ST. PAUL, MINN.	3.50	1.00	1.95	.65	4.50	1.50	2.95	.95	.55
SALT LAKE CITY, UTAH	2.20	.70	1.35	.45	2.90	.95	2.05	.65	.40
SAN FRANCISCO, CAL.	3.25	1.00	1.85	.60	4.00	1.25	2.60	.85	.50
SASKATOON, SASK.	1.95	.65	...	...	2.40	.80	...	...	.50
SEATTLE, WASH.	1.80	.60	1.05	.35	2.30	.75	1.55	.50	.35
SHELBY, MONT.	.55	.15	.35	.10	.80	.25	.60	.20	.15
SPOKANE, WASH.	1.15	.35	.65	.20	1.55	.50	1.05	.35	.25
TACOMA, WASH.	1.80	.60	1.05	.35	2.30	.75	1.55	.50	.35
TORONTO, ONT.	5.25	1.75	3.25	1.00	6.75	2.25	4.75	1.50	.70
VANCOUVER, B.C.	2.70	.90	1.30	.40	3.25	1.00	2.30	.75	.45
VICTORIA, B.C.	3.10	1.00	1.50	.50	3.75	1.25	2.65	.85	.50
WASHINGTON, D.C.	5.75	1.75	3.50	1.00	7.50	2.50	5.25	1.75	.75
WINNIPEG, MAN	2.50	.80	1.45	.45	3.25	1.00	2.20	.70	.45

Night rates apply from 7.00 p.m. to 4.30 a.m.

To secure Evening or Night Rates on Station-to-Station calls to points in Saskatchewan—Call the Operator.

Person-to-Person Night and Sunday rates do not apply on calls to points in Saskatchewan.



**CIGARS  
CIGARETTES  
TOBACCOS**

**The REX**  
**CIGAR AND NEWS STAND**

**NEWSPAPERS  
MAGAZINES  
CANDIES**

Phone **4277**

\* NEXT DOOR TO WOOLWORTH'S \*

Phone **4277**

# LETHBRIDGE

## INFORMATION

**92**

For Information Regarding New Subscribers,  
and Changes of Telephone Numbers  
**Dial 92**

## LONG DISTANCE

**0**

To report Unsatisfactory Long Distance  
Service  
**Dial 98** and ask for Chief Operator.

## TROUBLE

**93**

To Report Telephone Out of Order and  
Unsatisfactory Local Service  
**Dial 93**

**STEVE'S  
TAXI 4058**  
24-HOUR SERVICE

### A

A B Confectionery Lee Wong 328 13th St N. 3638  
Achtem John res 1511 7th Ave S. 2642  
Adams Claudette res 312 3rd Ave S. 2671  
Adnitt W Central Meat Market 406 13th St N. 3295  
Adnitt W C res 340 19th St N. 3854

### ADVANCE LUMBER CO LTD

YARD OFFICE 13th St S & 2nd Ave. 2063  
J W Moran res 415 11th St S. 2459  
GENERAL OFFICE 5th Ave S & 4th St. 3663  
N S Stoltze res 1517 7th Ave S. 3320  
R W Kellogg res 1110 7th Ave S. 2423  
N H Turnbull res 1404 14th Ave S. 3215  
T C Griffiths res 1305 7th Ave S. 2858

Ainscough W G res 508 13th St S. 2441  
Aird Jas res 1304 6th Ave S. 2083  
Aita's American Cash Grocery 431 18th St N. 2418  
Aitken D res 412 12th St S. 2321  
Aitken J A res 1312 4th Ave S. 2259

ALBERTA GOVERNMENT—See also Provincial  
Government

## DIRECTORY ADVERTISING PAYS

### ALBERTA GOVERNMENT

**TELEPHONES** General Office 808-810  
4th Ave S. 2234  
Information regarding New Subscribers and  
change of Telephone Nos. 92  
Telephones out of order. 93  
Long Distance Operator. 0  
Chief Operator. 98  
R E Phillips Local Manager. 2234  
R E Phillips District Commercial Supt. 3503  
W L Shera City & District Clerk. 3503  
J B Burke District Plant Supt. 3375  
R Harper District Traffic Supt. 4221  
Alberta Lumber Products 2018 2nd Ave S. 2219

### ALBERTA MEAT MARKET J Crighton

510 6th Ave S. 3492  
Alberta Montana Bus Lines Bus Depot 411 5 St S. 2288  
Alberta Motor Association

Information Bureau 306 7th St S. 2793  
Alberta Pacific Grain Co Ltd—Diamond City. 91-3221  
Alberta Pacific Grain Co Ltd—Tempest Siding. 91-4023  
Alberta Wheat Pool—Broxburn. 91-2133  
Alberta Wheat Pool—Coaldale. 91-2523  
Alberta Wheat Pool—Tempest Siding. 91-4022  
Alberta Wheat Pool—Wilson Siding. 91-1423  
Aldous Agency & Finance Co  
Insurance Collections & Accounting  
109 Sherlock Bldg. 3712  
Alex Taxi Marquis Hotel. 3545

### ALEXANDRA HOTEL 332 5th St S

Private Branch Exchange connecting all Rooms 3142  
Alford E W res No 2 Fire Hall. 3891  
Allan Archie res Lethbridge Country Club. 2527  
Allan E res 707 7th Ave S. 3284  
Allan R T. 91-2231  
Allen Mrs Annie res 613 16th St N. 4074  
Allen E E res 319 15th St S. 4358

**TED'S TERMINAL**  
"SMILE A MINUTE SERVICE STATION"

PHONE IMPERIAL 3 STAR & ESSO GASOLINE ■ ■ ■  
**2684** ■ ■ ■ MARVELUBE & MOBILOIL MOTOR OIL



410 - 3rd AVE. S.



PHONE  
2929

# AMBULANCE

PHONE  
2929

OPERATING FROM  
FLOCK'S FUNERAL HOME

**ALLEN DR L T** Dentist 8 Rylands Blk ..... 2165  
Allen Dr L T res 1503 7th Ave S ..... 2871  
Allen T S Jr res 1407 3rd Ave N ..... 3835  
Allison R res 522 12th St-B N ..... 3624  
Allison R E res 1264 4th Ave S ..... 3528  
Almlie E M res 311 15th St S ..... 3707  
Almond Josephine M res 11 Patterson Court ..... 3821

**ALVAU N** Herbalist 806 2nd Ave S ..... 2074  
Amer B res 1321 10th Ave S ..... 3734  
Anderson A C res 519 13th St S ..... 3975  
Anderson Ed C res 1248 4th Ave S ..... 3775  
Anderson D L ..... 91-2115  
Anderson N J res 619 12th St S ..... 4250  
Anderson & Smith Grading Contrs Lethbridge. 2777  
Anderson W D Sr res 941 10th St S ..... 2624  
Anderson W Del res 1237 7th Ave S ..... 2440  
Andrew R G res 1247 8th Ave-A S ..... 3841  
Andrews W ..... 91-1031  
Androkovich A ..... 91-1622  
Arcade Billiard & Cigar Store 325 5th St S ..... 3366  
Archer R G res 139 15th St N ..... 2469  
Archibald D C res 1247 6th Ave S ..... 2923  
Archibald Emma J res 24 Victoria Mansions ..... 2085  
Arkinstall C res 1624 3rd Ave N ..... 3329

**ARLINGTON HOTEL** A E Dupen Mgr  
1st Ave & 4th St S ..... 2278  
Armitt John res 1733 5th Ave N ..... 2954  
Armstrong T B res 527 13th St S ..... 3229  
Armstrong W J res 622 6th Ave S ..... 3301  
Army & Navy Veterans Club 517 5th Ave S ..... 3846  
Arnold Mrs A M res 1610 6th Ave N ..... 3397

**ARNOLD DR H A** Internal Medicine  
120 McFarland Bldg ..... 3171  
Dr H A Arnold res 635 11th St S ..... 4042  
Arnold T Jr res 330 19th St N ..... 2820  
Arnsdorf Rev R res 303 7th Ave-A S ..... 3826  
Art Signs J Patey Majestic Theatre Bldg ..... 2203

**ARTIC OIL SALES LTD**  
1211 2nd Ave S ..... 3496  
Artic Service Station L Coyne 3 Ave & 13 St S. 4162  
Artic Service Stn E Brennan—Shaughnessy ..... 91-3124  
Ascroft Chas res 246 15th St N ..... 3318  
Ascroft Mrs T res 1130a 13th St N ..... 4023

**ASHDOWN MARSHALL A** Optometrist  
407 5th St S ..... 4222  
C A Palmer Manager res ..... 4077  
Ashmore Vivian res 606 5th Ave S ..... 3374  
Ashton Mrs A M res 615A 9th Ave S ..... 2752  
Askew Mrs Walter res 1210 5th Ave-A S ..... 3210  
Asplin A res 1703 7th Ave S ..... 2222  
Associated Motors 314 11th St S ..... 2454

## GARRETT FURRIERS

FURS OF QUALITY

AT

POPULAR PRICES

REMODELING - REPAIRING - RELINING  
COLD STORAGE - CLEANING - GLAZING

HULL BLOCK - Phone 3812

## ASSOCIATED TRANSIT LINES

Ralph M Williamson Mgr rear 402 3rd St S. 2534  
Atkinson J M res 1245 5th Ave-A S ..... 3954

**ATLAS LUMBER CO LTD** Lumber &  
Builders' Supplies 3rd Ave & 16th St S ..... 2384  
J E McCorkle Manager res ..... 4238

**ATTRIDGE & MILLER LTD** Machinists  
1116 2nd Ave S ..... 2323  
G R Miller res 1416 6th Ave S ..... 4390

**AUTOMOTIVE SUPPLY CO**  
Storage Batteries 205 10th St S ..... 3848  
Earl L Schoof Mgr res 207 10th St S ..... 2011

## B

B C Fruit Grocers & Confrs 906 3rd Ave S ..... 2033  
Baalim A G res 630 11th St S ..... 3546

**BAALIM BUILDING AGENCIES**  
317 7th St S ..... 2432

Baalim Harry G res 619 9th St S ..... 2643

**BAALIM MOTOR CO LTD** 7th St S  
Parts Accessories Dunlop Tires ..... 4353  
Sales Manager and Salesmen ..... 2621  
Shop and Service Department ..... 4055  
General Office and Accountant ..... 3436  
RESIDENCES For Night Calls Only  
A G Baalim President res ..... 3546  
Fred T King Mgr res ..... 4158  
F W Cottam Service Mgr res ..... 2073  
I J Kain Credit Mgr res ..... 2561

**BAALIM WHOLESALE DISTRIBUTORS** 7th St S ..... 4353  
Bailey Margaret res 927 9th St S ..... 2747



PHONE 2904

STORAGE

**BIJOU  
TAXI**

# 2750

**50c  
and up**

W. HOSELTON  
Prop.



# STEVE'S TAXI 4058

24-HOUR SERVICE

Baines A E res 304 7th Ave-A S	3719
Baines C D res 423 11th St S	2875
Baines E C res 1316 6th Ave S	3901
Baird R R res 324 13th St S	2195
Baker H S res 1257 6th Ave S	3664
Baker Philip	91-1124
Baker Roscoe	91-1114
Balcovske W res 419 8th St S	2349
Balderson Blanche res 1317 6th Ave S	4018
Balderson Mrs Pauline res 428 14th St S	2029
Bank of Montreal 522 3rd Ave S	3446
Manager's Office J C Downing	2526
Bank of Nova Scotia The 3rd Ave S	2711
Bannerman J res 1031 12th St-B S	2851

## BANNERMAN MOTORS Nash Cars &

Diamond T Trucks 816 4th Ave S	2045
Bannerman N Groo res	3464
Barby C res 803 7th Ave S	3169
Barnsley A res 629 11th St S	2267
Barnsley Arthur Real Estate 416 6th St S	2767
Barr James res 3 Strathcona Court	2350
Barrett Horace res 513 12th St S	3998
Barrowman Robert res 283 7th Ave-A S	2147
Bartlett L G	91-1424
Bartlett W E res 520 12th St S	3927
Bass W H res 1003 8th Ave S	2547
Basson Fred res 709 7th Ave S	3467
Bateman M res 302 12th St S	4216
<b>BATES A B SERVICE GROCERY</b>	2453
709 4th Ave S	2930
Bates T G res 275 7th Ave-A S	2086
Batsford Sidney T res 412 7th Ave S	3560
Batty A D	91-1042
Bawden Miss res 1255 4th Ave S	2158
Bawlf N Grain Co Ltd	91-1422

## BAXTER GEO H & SON Plbg Htg &

Gas Ftg 903 9th Ave S	3830
-----------------------	------

## BAY SUPER SERVICE STATION

Hudson's Bay Bldg	3580
Bayley Len W res 220 Sherlock Bldg	2316
Bazinas G D res Lake Pavilion	3532
Beach L F C res 133 14th St N	3705
Beasley A M res 211 5th Ave S	2135

## BEATTIE W S Barrister & Solicitor

10 Alberta Blk	3237
W S Beattie res 1262 4th Ave S	3150

## BEATTY BROS LTD

Washers Ironers & Cleaners 409 5th St S	4054
---	------

## BEAUMONT ARTHUR K.C. Barrister

& Solicitor etc 1262 6th Ave-A S	2118
Beaumont Mrs Emma res 425 12th St N	2780
Becker H N res 7 Galt Manor	2385

## BECKER LUMBER CO LTD

310 7th St S Grd Flr Sherlock Bldg	2386
H N Becker res 7 Galt Manor	2385
Arthur Duff res 914 12th St S	3126
Bedwell Alfred E res 1 Macleod Trail	2582
Begoski A	91-2111
Belford V res 319 14th St S	2570
Bell Arthur res 1208 5th Ave S	2346
Bell H res 1217 9th Ave N	2027
Bellchambers B H res 1507 7th Ave S	4324
Belzberg Jack res 1257 7th Ave S	2066
Benedek Bert res 504 6th Ave S	3542
Bennett M J	91-3115
Bennett Farm R P Anderson Mgr	91-1714
Benson Clifford L	91-3214
Benson Wm S res 531 15th St S	3751

## BERMAC CYCLE & RADIO CO

408 6th St S	3232
--------------	------

Bernard J Nelson res 520 12th St-B N	3713
Bernard J R res 423 12th St-A N	2594
Berry Mrs H res 406 4th St S	2558
Berte John res 707 9th Ave N	2803
Big Cone Super-Rich Ice Cream Str The York Hotel	2530

## BIGELOW FOWLER & GORDON DRS

Physicians & Surgeons Hull Blk	2622
Dr J K Bigelow res 418 13th St S	3885
Dr Douglas B Fowler res 1403 5th Ave S	4356
Dr W H A Gordon res 542 8th St S	4287
Shaughnessy Office	91-3121
Bigelow Dr J K res 418 13th St S	3885

## BIJOU TAXI AND U DRIVE CARS

W Hoselton 416 4th Ave S	2750
Bikman Sam res 534 6th St S	2348
Billigmeier J J res 415 8th St S	3165
Binning Mrs Ellen res 113 16th St N	3862
Birrell Walter res 422 12th St-B N	2560
Bishop Mrs E A res 321 19th St N	4313
Bishop T	91-1431
Bitango Matt	91-1815
Black G L res 802 12th St S	4119
Blackbourne L H res 1249 5th Ave-A S	4102
Blacker Mrs Geo res 302 6th Ave-A S	3117
Blackert W P res 1233 4th Ave S	2502

## BLACKFORD PRESS M B Blackford

rear Woolworth's Store 5th St S	3287
Blair W E res 943 9th St S	2714
Blake G res 522 6th St S	3292
Blenner-Hassett Lon res 1213A 3rd Ave S	3035
Blenner-Hassett W A res 1214 3rd Ave S	2634
Bletcher Mrs B res 9 Tudor Manor	2947
Bletcher Miss H res 626 9th St S	2020
Blount W L res 323 7th Ave S	3408
Blythe D A res 1507 4th Ave S	2809
Board of Trade Office Board of Trade Bldg	2012
Bob's Transport 410 3rd Ave S	2684

## BODARD STUART J Mgr Lilly & Bodard

Bank of Commerce Bldg	3211
Stuart J Bodard res 966 11th St S	3214
Bohner Geo	91-2241
Borden Miss Mary res 322 4th St S	3242
Borgal E R	91-4111
Bostock E W res 16 Devon Court	2804
Boston Hat Works & Shoe Shine 327a 5th St S	2961
Bostrom Miss E Beauty Shop 10 Rylands Blk	3575
Botsford Fred res 1258 6th Ave-A S	4085
Boulton C W res 1229 7th Ave S	3481
Boulton H	91-1521
Bourgett G res 319 7th Ave S	2521
Bowden F	91-1723
Bowers W	91-3422





PHONE:

"SAFE MILK IS PASTEURIZED"

# 4124 - Purity Dairy

Milk - Cream - Butter - Buttermilk - Cottage Cheese



Bowman C B Agency Ltd Rl Est Ins Acadia Bldg	2325
W S Wallace Mgr res	3890
Bow On Tong Co 316 2nd Ave S	3675
Bow W R 406 2nd Ave S	2730
Bowron J E res 126 18th St N	4382
Boyd H res 544 12th St S	2410
Boyden P	91-1313
Boyse Harry res 401 19th St N	4138
Bradford J J Live Stock Dlr Stock Yards	2915
Bradford J J res 1242 6th Ave S	2698
Bradford J R res 1 Maryland Court	3952
Bradley H B res 1306 7th Ave S	4184
Bradley N H Engr Prov Public Wks 216 5th St S	2225
N H Bradley res 631 14th St S	2925
Brander A I res Riverview	2201
Brandow Mrs C E res 944 13th St S	2021
Breckenridge N J res 613 8th Ave S	2157
Brenton C J res 1217 7th Ave S	2683
Brindley J	91-1613

**BRINK E A** Distbr Hudson Cars & Seiberling

Tires 428 5th St S	4212
Brink E A res 635 10th St S	3662
Brite Spot The 712 3rd Ave S	3068

**BRITISH AMERICAN OIL CO LTD**

THE 17th St & 2nd Ave S	2585
J D Thomas Distributor res 630 15th St S	3130
C G Murray Branch Mgr res 533 11th St S	3033

**BRITISH CANADIAN FINANCE LTD**

H D Rood Mgr 315 6th St S	2843
---------------------------	------

**BRITISH CANADIAN TRUST CO**

315 6th St S	2843
H D Rood Manager res	2837

Brodie Mrs J res 648 11th St	2956
Brodie W S res 714 10th St S	3280

**BROOKS' PERMANENT WAVE**

<b>SALON</b> Dorothy M Erickson McFarland Bldg	4262
Brown C F res 1505 3rd Ave N	2583
Brown G S res Home Farm CPR	91-2021
Brown Geo res 420 8th St S	3018
Brown Dr T E Phys & Surg 329 7th St S	3505
Dr T E Brown res 604 15th St S	2276
Brown T M res 502 5th Ave S	2032
Brown's Musical Supplies 303 6th St S	2272
Brownrigg D J res 622 10th St S	3277
Bruce Mrs H H Travellers' Aid 204 9th St S	3723
Bruchet G res 1509 4th Ave S	3706
Brumwell J res 1228 3rd Ave S	4109
Brunet Insp J res Cor 13th St & 3rd Ave S	2613
Brunner W res 803 3rd Ave S	3929
Bryan S res 324 15th St S	3939
Bryans Dr W E Phys & Surg 329 7th St S	3501
Dr W E Bryans res 1224 6th Ave-A S	2922
Bryant Chas res 635 8th St S	3984
Buchan R D res 1409 7th Ave S	2572
Buchanan B R res 624 14th St S	3268
Buchanan Stanley A res 938 13th St S	3352
Buchanan W A res 1404 4th Ave S	3508
Bugler J res 638 12th St S	3415
Bullis A H res 1408 7th Ave S	4073
Bullock K G res 834 7th St S	3930
Burgess J B	91-2832

**GARRETT FURRIERS**

FURS OF QUALITY

AT  
POPULAR PRICES
 REMODELING - REPAIRING - RELINING  
 COLD STORAGE - CLEANING - GLAZING  
**HULL BLOCK - Phone 3812**

Burgmann Hall 418 13th St N	3882
Burke J B res 628 15th St S	4271
Burkitt Mrs J C res 531 8th St S	2827
Burnap A J res 272 7th Ave S	3363
Burnard Mrs E res 307 7th Ave S	4263
Burnett Thomas M res 622A 6th Ave S	3317
Burnham H G res 439 18th St N	3780

**BURNS & CO LIMITED**

Office and Wholesale Dept 610 3rd Ave S	2388
Main Market 610 3rd Ave S	3412
Dominion Market Hill Bldg	2654
Abattoir near Exhibition Grounds	3831

Burns D W res 1250 14th Ave N	2528
Burr Leland	91-1222
Burritt G H res 1255 5th Ave-A S	3531
Burton J res 722 15th St S	3918

**BUS DEPOT** 411 5th St S 2288

Buss R J res 4 - 1228 6th Ave S	2224
---------------------------------	------

<b>BUZZ SHOP</b> Vulcanizing 311 8th St S	3932
William Knox Mgr res	3868

**C****CAIRNS DR EDMUND** Specialist in

Diseases of Children 120 McFarland Bldg	3171
Dr Edmund Cairns res 5 Galt Manor	3311
Cairns T M res 1 - 1228 6th Ave S	2822
Calder F res 833 15th St S	3753

**CALGARY POWER CO LTD**

415 3rd Ave S	4267
W E Ross Dist Supervisor res	3825
E Leeds Local Manager res	3824

Cameo Cafe 323 5th St S	2485
Cameron C E Barrister C Metcalfe Bldg	3559
Cameron Everett C res 1256 5th Ave S	4165
Cameron Miss L res 422 8th St S	4083
Cameron L & Co Milnry Ladies' Wr 312 6th St S	2850
Cameron Miss M res 4 Galt Manor	3629
Cameron Phyllis res 1 Galt Manor	3778

**CAMPBELL BRYANS BROWN &**

<b>TUTTLE DRS</b> Phys & Surgs 329 7th St S	
Drs Campbell & Brown	3505
Drs Bryans & Tuttle	3501
Campbell J M res 1222 3rd Ave S	4094
Campbell Dr P M Phys & Surg 329 7th St S	3505
Dr P M Campbell res 528 8th St S	2358
Campbell R res 928 7th St S	3519
Campbell R J res 808 7th Ave S	2229

**CAMPBELL WILSON & HORNE LTD**

See Horne & Pitfield Ltd	
Canada Cafe Jim Yip 420 13th St N	2186





Canada Life Assurance Co Metropolitan Bldg . . . 2816

### CANADIAN BAKERIES LTD

Cor 8th St & 7th Ave S . . . 3266  
O W Clarke Mgr res . . . 3034

Canadian Bank of Commerce The 4 Av & 7 St S . . . 2414  
Manager's Office F L Rhodes . . . 3461

Canadian Corps Commissionaires 246 13th St N . . . 2903

### CANADIAN FREIGHTWAYS

518 5th St S . . . 2945  
T C Mikkelsen res 649 10th St S . . . 2254

Canadian Government Elevator General Office . . . 4380  
Elevator . . . 4383

### CANADIAN JOHNS-MANVILLE CO LTD

Wilkinson & McClean Ltd Alberta Distributors  
1261 7th Ave S . . . 3279

Canadian Johns Manville Co Ltd

Atlas Lumber Co Ltd Representatives  
3rd Ave & 16th St S . . . 2384

Canadian Legion B E S L 1st Ave & 9th St S . . . 3426

### CANADIAN OIL COMPANIES LTD

Office & Warehouse 17th St & 2nd Ave S . . . 3208  
M L McKinnon res . . . 2108

### CANADIAN PACIFIC RAILWAY

CARTAGE—PICK-UP & DELIVERY SERVICE 2565

EXPRESS—V C Huycke Agent  
Information re Express . . . 3434

#### PASSENGER

Information re Trains and Steamships . . . 3512  
Ticket Agent H G Stretton . . . 3512

Baggage Room . . . 3741

#### OPERATING

Superintendent W H Ruthven . . . 3642  
Chief Clerk D Stevenson . . . 3642

Assistant Superintendent W Thomas . . . 2067

Division Master Mechanic L B George . . . 2067

Assistant Chief Clerk C Jackson . . . 2067

Division Engineer J M Campbell . . . 3909

B & B Master and Roadmasters . . . 3909

TELEGRAPHS—308 6th St S

Manager W R Russell . . . 3671

Messenger Errand & Distribution Service

#### YARD

Yardmaster—1st Ave S . . . 3314

Roundhouse—Loco Foreman A Hayward . . . 3724

Car Foreman A Robson . . . 3724

Storekeeper W J Reader . . . 2137



### CANADIAN PACIFIC RAILWAY—Continued

#### FREIGHT—13th St

Information re Incoming Freight . . . 2154

Local Freight Agent F E Reagh . . . 3354

Chief Clerk C C Collins . . . 3354

Shed Foreman W D Robertson . . . 3354

Rate Clerk . . . 3354

Claims Clerk S Wakeman . . . 2154

Cashier J Ferguson . . . 2154

Car Service J E Rannard . . . 3354

Billing Staff T S Allen . . . 2154

#### STOCKYARDS

Foreman G McKenzie . . . 3390

AGENT—Coaldale . . . 91-2431

AGENT—Coalhurst . . . 2236

#### DEPARTMENT OF NATURAL RESOURCES

##### Irrigation Branch

F G Cross Supt Operation & Maintenance . . . 2136

G S Brown Canal Supt . . . 2136

Irrigation Office . . . 91-2013

Drafting Room . . . 91-2015

Watermaster E A Lawrence—Lethbridge . . . 2549

Watermaster A Petrie—Chin Headgates . . . 91-2023

Watermaster F Murray—Coaldale Dist . . . 91-2025

Watermaster R S Lawrence—Coaldale . . . 91-2012

Watermaster H W Rowley—Coaldale . . . 91-2031

G S Brown res—Home Farm . . . 91-2021

Storekeeper—Home Farm . . . 91-2022

Farm Foreman—Home Farm . . . 91-2033

Central Farm Coaldale—F Robertson . . . 91-2311

Chin Farm . . . 91-2831

##### Land Branch

W P Clandillon Land Inspector . . . 2870

Canada Colonization Assn H Dick Supervisor . . . 2870

### CANADIAN PACIFIC TRANS-

PORT CO LTD 308 6th St S . . . 3671

Messenger Errand & Distribution Service

Canadian Red Cross Society

Conservatory of Music Bldg . . . 2099

### CANADIAN WESTERN NAT'L GAS

LIGHT HEAT & POWER CO LTD

420 6th St S . . . 2510

J J Morrison Dist Supt res . . . 2439

Canton Chop Suey House 318 2nd Ave S . . . 3262

### CAPITOL FURNITURE STORE

404 5th St S . . . 2115

### CAPITOL SERVICE STATION

E A Brink Prop 428 5th St S . . . 4212

CAPITOL THEATRE 5th St S . . . 2080

### CARLSON ALBERT Gravel & Hauling

Contractor—River Bottom . . . 3610

Carney F res 527 8th St S . . . 3587

Carnill Mrs W res 1223 5th Ave-A S . . . 2238

Carpenter E J res 811 8th Ave S . . . 4270

Carpenter Mrs J A res 313 6th Ave-A S . . . 4092

Carrier B res 837 6th St S . . . 4007

Carrier Mrs F res 1210 2nd Ave S . . . 3022

Carson Miss A res 422 8th St S . . . 3403

### CARSON THE E M SADDLERY &

LEATHER GOODS CO LTD

306 5th St S . . . 3764

R R Baird Mgr res . . . 2195

CARSON H R LTD 316 7th St S . . . 3155

Wholesale Automotive Supplies Equipment etc

Private Branch Exchange connecting all Depts

W Watson Manager res . . . 3473

Eric S Howe Asst Mgr res . . . 2814

R Erdmann Service Mgr res . . . 4104



3

GREAT  
MIXERS

*Lethbridge*  
BREWERIES LIMITED

LIME RICKEY  
CLUB SODA  
DRY GINGER ALE



*Beverages of Distinction*

PHONE 3442 - 2444



**DRY CLEANING DEPARTMENT**  
of  
**The Lethbridge Laundry Company**  
**PHONES—3451 or 3452**



# FAT'S STEVE SMEREK TAXI 3838

24 HOUR SERVICE

**CARSON DR J E** Dentist 111 McFarland

Bldg	3030
Dr J E Carson res 1401 7th Ave S	2421
Carte K A res 1626 3rd Ave N	2692
Case J I Co	See Lethbridge Farm Equipment
Cash J res 1218 6th Ave S	2557
Cashore J H res 537 13th St S	3032
Cass R L res 410-B 12th St-A S	3384
Castle A R res 1321 10th Ave S	3734
Castle C res 704 9th Ave S	2952

**CATELLI FOOD PRODUCTS LTD**

12th St-A N	3236
-------------	------

**CATERPILLAR TRACTORS COMBINES & ROAD MACHINERY** Union Tractor

& Harvester Co Ltd 1269 2nd Ave S	2606
Caudwell T H res 334 12th St S	2519
Central Canadian Greyhound Lines Ltd	
Bus Depot 411 5th St S	2288
Central Meat Market 406 13th St N	3295

**CENTRAL SECOND HAND STORE**

THE 408 5th St S	2551
------------------	------

**CENTRAL SERVICE STATION**

4th Ave & 5th St S	3749
--------------------	------

Chalmers W D res 212 11th St S	2481
Chamberlin H G res 420 7th St S	2197
Chaplin A res 293 7th Ave-A S	4357
Chaplin Ed Sr res 1209 4th Ave S	3296

**CHAPLIN EDDIE** City Vulcanizing Shop

Rear Dallas Hotel	2332
Chapman T O Sr res 732 12th St-B N	3589
Chapman Thos Jr	91-1812
Chappell Stanley L res 938 8th St S	2617
Charlton Mrs J res 323 11th St S	3012
Charyk J A res 318 7th Ave S	2265
Cherry Dr A Physician & Surg 14-15 Oliver Blk	4180
Cherry Dr A res 1424 7th Ave S	4024
Cherwinski Mrs J res 230 16th St N	3267
Chester H res 1232 6th Ave-A S	3865
Chester J C res 967 11th St S	2845
Chester Mine J C Chester	91-3015
Chinook Club 1119 3rd Ave S	2443
Chiswick G res 501 14th St S	3246
Chiswick Robert J res 636 10th St S	4086
Chow L	91-1323

**CHRIS TRANSPORT** 518 5th St S

	{2945
	{2944

**CHRISTENSEN BROS** Funeral Home

320 11th St S	2802
Ambulance Service	
M E Christensen res 320 11th St S	2802

**GARRETT FURRIERS**  
FURS OF QUALITY

AT  
POPULAR PRICES  
REMODELING - REPAIRING - RELINING  
COLD STORAGE - CLEANING - GLAZING  
**HULL BLOCK** - Phone 3812

Christensen H C res 327 11th St S	4308
Christensen J H res 12th Ave & 7th St-A S	2907
Christensen L H	91-1131
Christensen M E res 320 11th St S	2802
Christensen P res 319 13th St S	2834
Christensen W K res 423 14th St S	2913
Christianson T res 912 7th Ave S	2124
Christie Grant Co Mrs M Goodman 308 5th St S	4344
Christie R res 1809 5th Ave N	2797
Christie W E Electrical Contr 803 12th St-C N	4128

**CHRYSLER PLYMOUTH SERVICE**

413-417 6th St S	2887
Church Ed res 1512 6th Ave S	2799
Church H W Barrister 10 Oliver Blk	4015
Church H W res 535 15th St S	2002
Citizens Lumber Co	91-2623

**CITY DAIRY** 411 4th St S**CITY OF LETHBRIDGE**

Mayor's Office 332 7th St S	2284
City Manager J T Watson	3645
City Clerk F Steedman	2355
Treasurer T H Fleetwood	3553
Light & Water Accounting Dept	3553
City Engineer & Public Works	3541
Waterworks Department	3541
Health Dept Plumbing & Gas Inspections	3541
Assessor & License Inspector	2310
Police Station City Hall	2145
Chief of Police City Hall	3808
City Laboratory	3136
Cemetery W Bedster	3774
Electric Light Power & Street Railway	3645
Fire Station No. 1 (for fire only) Fire Hall	3333
Fire Station No 1 Ambulance and General	
Office 4th St & 2nd Ave S	3340
Fire Station No 2 13th St N	2445
Isolation Hospital 1920 7th Ave S	3430
Stores Dept 3rd St & 4th Ave	2283
Exhibition Board Henderson Park	4131

**NIGHT CALLS ONLY**

Electric Trouble Dept 619 14th St S	2404
Waterworks Trouble Dept	3731
Public Works Dept J Haines res	3013

STOP  
AT  
T

## TED'S TERMINAL

"SMILE A MINUTE SERVICE STATION"

IMPERIAL 3 STAR &amp; ESSO GASOLINE

MARVELUBE &amp; MOBIL OIL MOTOR OIL

410 - 3rd Ave. S.

ATLAS TIRES

Phone 2684





**CITY SIGN WORKS**

Robert Barrowman 714 3rd Ave S ..... 3686  
N Hall res ..... 4204

City Vulcanizing Shop Eddie Chaplin  
rear Dallas Hotel ..... 2332

**CLANCY DR L D Chiropractor**

7 Acadia Blk 3rd Ave S ..... 2231

Clancy Dr L D res 425 12th St S ..... 2387  
Clark D A res 1516A 7th Ave S ..... 4147  
Clark D F W res 512 15th St S ..... 2264  
Clark & Nichols Auto Repairs 315 4th St S ..... 4343  
Clark P J res 1103 7th Ave S ..... 4046  
Clark Dr Ward F Dentist 121 McFarland Blk ..... 4140  
Clark Dr Ward F res 639 15th St S ..... 4136

**CLARKE & CO Ready-to-Wear & Millinery**

316 6th St S ..... 3453

Clarke H G res 422 13th St S ..... 3729

**CLARKE H V Portrait Studio**

McFarland Bldg 4th Ave S ..... 2010

Clarke M J res 604 12th St S ..... 3787  
Clarke O W res 977 13th St S ..... 3034  
Clarke Photo Service McFarland Bldg 4th Ave S ..... 2010  
Clarke W T res 1256 7th Ave S ..... 3701  
Clarke's Coffee Shop 412 5th St S ..... 4245

**CLASSIC BEAUTY SHOP Lois Heninger**

109 McFarland Bldg ..... 3355

Clayton E res 509 12th St N ..... 2367  
Clemis D res 1266 6th Ave S ..... 3648  
Clemis Wm res 1322 6th Ave S ..... 2878  
Clendenan C E res 1232 6th Ave S ..... 4014  
Clendenning C S res 1206 6th Ave S ..... 4392  
Clifford R T res 711 12th St S ..... 3308  
Clough Adah res 322 3rd St S ..... 3240  
Club Cigar Store F J Basson 3rd Ave & 5th St S ..... 3056  
Coaker Owen ..... 91-1433  
Coaldale Cafe ..... 91-2432  
Coaldale Cheese Factory ..... 91-2312  
Coaldale Consolidated School ..... 91-2625  
Coaldale Co-operative Supply Co ..... 91-2414  
Coaldale Hospital ..... 91-2411  
Coaldale Hotel Co ..... 91-2611  
Cochrane Miss Nona res 317 3rd St S ..... 3614  
Cockshutt Plow Co Ltd 1262 1st Ave S ..... 3659  
J J Firth Mgr res ..... 3870  
Cocq W A R res 2 Strathcona Court ..... 4318  
Coffin Bertha M res 814 6th Ave S ..... 3530  
Cohen Hyman res 1610 6th Ave S ..... 2242  
Coleman G L ..... 91-1911  
Collins P J res 1239 5th Ave S ..... 2548  
Colonists' Service Association Ltd 409 2nd Ave S ..... 2151

**COMMERCIAL PRINTERS & OFFICE OUTFITTERS LTD**

326 7th St S ..... 2999

J Heinitz Pres & Mng Director res 1238

5th Ave S ..... 2994

Comrie George C res 939 10th St S ..... 4235

Conn Miss J res 1227 6th Ave-A S ..... 2886

Connor Mrs E L res 1265 7th Ave S ..... 3479

Connor Miss L res 10 Patterson Court ..... 2681

**CONSERVATORY OF MUSIC**

**LETHBRIDGE J G Harper Director**  
11th St & 5th Ave S ..... 3765

**CONSUMERS' HARDWARE & SUPPLY CO**

516-518 3rd Ave S

General Hardware Paints Baggage etc ..... 2919

Sporting Goods Chinaware Kitchen Goods etc ..... 2212

Office ..... 2920

Convent St Aloysius 116 9th St S ..... 3509

Conybeare Mrs C F P res Riverview ..... 4301

**CONYBEARE DAVIDSON & DAVIDSON**

Barristers

British Canadian Trust Bldg ..... 3711

R R Davidson KC res 1301 4th Ave S ..... 2465

W P Davidson res 960 13th St S ..... 3449

Cook C W Electrical Contractor 719 3rd St S ..... 3816

Cook E H res 324 14th St S ..... 2078

Cook W S res 718 10th St S ..... 3039

Cooke Rev J C res 292 7th Ave S ..... 4112

Cooke R A res 321 15th St S ..... 2693

Coon B T res 607 7th Ave S ..... 4370

Cooper E B res 1267 7th Ave S ..... 3285

Cooper's Transport 3rd Ave S rear Rylands ..... 2684

Cope G C res 624 12th St S ..... 3618

Cornwall H F res 914 12th St S ..... 3126

Cottam F W res 428 13th St S ..... 2073

Coupland Miss Molly ..... 91-1212

COURT HOUSE ..... See Provincial Govt

Cowan Wm res 1823 8th Ave N ..... 2329

Cowgill E res 913 7th St-A S ..... 2237

Cox George T res 617 8th St S ..... 2753

Cox J W res 1705 2nd Ave N ..... 2883

Crabb B G res 1715 9th Ave S ..... 3447

Crabb S A B res 10th Ave & 20th St S ..... 2438

Craddock E res 281 7th Ave S ..... 2838

Cragg R C res Hardieville ..... 2391

Craig J B res 937 7th St S ..... 3257

Craig Joe res West of Huff Refinery ..... 2991

Craig Marjorie res 621 13th St S ..... 2248

Craig Dr W P Dentist Rylands Blk ..... 3357

Craig Dr W P res 639 12th St ..... 2419

Cranston H G res 636 16th St N ..... 3627

**CRANSTOUN E C Auditor & Accountant**

7 Rylands Blk ..... 4135

Cranstoun E C res 520 15th St S ..... 3008

Crawford R A res 625 14th St S ..... 2382

Crawford W S res 1612 6th Ave S ..... 2110

Crest C S ..... 91-1933

Crewe R O res 921 11th St S ..... 2268

Cripps G H & Son Piano Tuners 627 10th St S ..... 2168

Crist C G res 1229 5th Ave S ..... 3635

Crofts Miss F res 810 15th St S ..... 3579

Cropley Geo res Auto Camp Henderson Lake ..... 4207

Cross A E res 730 10th St S ..... 3168

**CROSS CLIFTON C & CO LTD**

Investments & Real Estate Greyhound Bldg ..... 2460

Night Calls F C Rubbra res ..... 4145



# FAT'S STEVE SMEREK TAXI 3838

24 HOUR SERVICE

Cross F G res 1018 1st Ave S ..... 3798  
 Cross Wm res 107 21st St N ..... 3247

## CROSS' STUDIO Photography & Picture

Framing 614 3rd Ave S ..... 2673  
 Crowe D H res 1609 5th Ave N ..... 3679  
 Crowe Elizabeth res 210 20th St N ..... 3763  
 Crowley Transport 4th Ave & 8th St S ..... 4167  
 Crowther J res 630 14th St S ..... 2710  
 Cruickshank R res 318 12th St S ..... 4292

## CRYSTAL DAIRY LTD 434 8th St S

Order Department ..... 2576  
 General Office ..... 2577  
 Cuell C T A res 316 15th St S ..... 3495  
 Cull Percy res 528 13th St S ..... 2598  
 Cullen May res 1245 5th Ave S ..... 2077  
 Cumming J B res 909 8th Ave S ..... 2049  
 If no answer call ..... 2820  
 Cumming V B res 409 12th St S ..... 2058  
 Cundall's Smart Shoe Shop McFarland Bldg ..... 2760  
 Cunningham Mrs Harriet res 207 5th Ave S ..... 3264  
 Currie R H res 1617 7th Ave S ..... 3924  
 Customs Canada Collector of Customs Post Office ..... 2688

## CUT RATE FURNITURE STORE

116-118 5th St S ..... 3024  
 Night Calls K S Godfrey ..... 2948  
 Cuthill R W res 1 Devon Court ..... 2740

## D

"D" Perlux Cleaners & Tailor 410 5th St S ..... 3666  
 Dainty A res 239 15th St N ..... 3851  
 Dainty A ..... 91-1214  
 Daley James W res 424 15th St S ..... 3042

## DALLAS HOTEL 312 5th St S

Geo O Rowe Mgr res 534 14th St S ..... 3752  
 Dalrymple James res 715 3rd St-A S ..... 2103  
 Dalrymple & Lawrence General Merchants ..... 91-3213

## DAN'S REPAIR SHOP 320A 7th St S

Daniel C R res Coaldale Rd ..... 3601  
 Daniel C R Knight Farm ..... 91-1832  
 Daniel Chas Jr ..... 91-1811  
 Davidson J A res 516 15th St S ..... 2798  
 Davidson J Frank res 326 16th St S ..... 2255  
 Davidson J M res 1110 5th Ave S ..... 3432  
 Davidson John McD ..... 91-2815  
 Davidson R R res 1301 4th Ave S ..... 2465  
 Davidson W P res 960 13th St S ..... 3449  
 Davies Geo B res 410 14th St S ..... 2931  
 Davies John I res 632 10th St S ..... 4241  
 Davies O K res 541 12th St-A N ..... 2789  
 Davis Mrs Albert M res 511 7th Ave S ..... 3643  
 Davis E res 637 6th St S ..... 2581  
 Davis E C H res 1008 6th Ave S ..... 4236  
 Davis J L res 615 14th St S ..... 2649

## DE JOURDAN

### STUDIO AND COMMERCIAL PHOTOGRAPHY

PHONE 2658 105-8th Street S.  
 (OPP. RAILWAY STATION)

Davis Roger ..... 91-3423  
 Davis S S ..... 91-2512  
 Dawson Charles E res 1245 5th Ave S ..... 3422  
 Dawson Cyril res 8 Patterson Court ..... 2908  
 Dawson D P res 305 7th Ave-A S ..... 3947  
 Dawson Frank H res 3 Maple Court ..... 4339  
 Dawson W H res 1106 7th Ave S ..... 2368  
 Dean J res 616 7th Ave S ..... 4113  
 Dean's Shoe Store 612 4th Ave S ..... 3050

## DEERE JOHN PLOW CO LTD

Implements 1239 2nd Ave S ..... 3786  
 Repair Department ..... 3976  
 Night Calls ..... 3384  
 Local Agency A C McDonald 1245 2nd Ave S ..... 2043

## DE JOURDAN'S STUDIO

J M DeJourdan 105 8th St S ..... 2658  
 Delay J W res 529 12th St-C N ..... 2939  
 Del Monte General Store John Martens ..... 91-2513  
 De Long Mrs W H res 532 14th St S ..... 2893

## DENCH OF CANADA LTD S E Dench Mgr

1101 2nd Ave S ..... 4234  
 Derby Alec res 1116 5th Ave S ..... 2604  
 Derby W J res 638 10th St S ..... 2652  
 Dewar Wm res 334 19th St N ..... 4081

## DIAMOND T TRUCK DEALERS

Bannerman Motors 816 4th Ave S ..... 2045  
 Dick Bernard J ..... 91-4021  
 Dick G H res 3 Patterson Court ..... 3227  
 Dick John J ..... 91-2725  
 Dickie E S res 1249 6th Ave-A S ..... 2912  
 Dimmer & Hopp Service Station 3 Ave & 9 St S ..... 3038

## DIMOCK DR H C Physician & Surgeon

108 McFarland Bldg ..... 4306  
 Dr H C Dimock res 1231 6th Ave-A S ..... 2949  
 Doadt D L res 612 14th St S ..... 2679  
 Dobbs S H res 836 12th St S ..... 2101  
 Dodd George res 411 12th St-C N ..... 2630

Phone 91-3413

## THOM'S DAIRY

Phone 91-3413

NATURAL MORNINGS MILK

GOVERNMENT INSPECTED HERD

COURTEOUS SERVICE GUARANTEED



PHONE:

"SAFE MILK IS PASTEURIZED"

# 4124 - Purity Dairy

Milk - Cream - Butter - Buttermilk - Cottage Cheese



**STEVE'S**  
**TAXI** 4058  
24-HOUR SERVICE

Dodd Mrs Gertrude res 523 12th St N ..... 3393  
Dodd W A Tailor 309 13th St N ..... 2810

**DODD'S AUTO ELECTRIC**

405 4th Ave S ..... 3250  
George Dodd Mgr res 411 12th St-C N ..... 2630

**DODGE-DE SOTO SALES & SERVICE**

313 7th St S ..... 3736  
Doe Mrs K L res 615 5th St S ..... 4134  
Doerksen B B ..... 91-2313  
Dogterom C ..... 91-1631  
Dogterom J ..... 91-1531  
Dogterom W H res 1807 6th Ave N ..... 2455  
Dolly's Beauty Salon Miss D Rossetti 320 13 St N ..... 2662  
Domeier J res 1010 12th St S ..... 2013  
Domeier W res 1713 5th Ave-A N ..... 2863

**DOMINION BEAUTY SUPPLY CO**

Alberta Block ..... 2250

**Dominion Government Dept of Agriculture**

Prairie Farm Rehabilitation W Wotherspoon  
Dist Engineer Post Office Bldg ..... 2044  
Prairie Farm Assistance Branch  
5 Metropolitan Bldg ..... 3048  
Veterinary Laboratory Post Office Bldg ..... 3810

**Dominion Government Dept of National Defence**

Lethbridge Garrison  
O.C. C.S.A.T.C. .... 3804  
R.C.A.S.C. Supply Depot ..... 2647  
Officers' Mess ..... 3597  
Garrison Hospital 413 14th St S ..... 2985  
Lethbridge Armoury Cor 6th Ave & 6th St S ..... 2650

**Dominion Government Dept of Transport**

Civil Aviation Division  
District Airway Engineer Post Office Bldg ..... 2290  
Dist Insp Western Airways Post Office Bldg ..... 3802  
Maintenance Radio Branch Sherlock Bldg ..... 3840  
Meteorological Radio Office—Kenyon Field ..... 4334  
Dominion Meat Market Hill Blk ..... 2654

**DOMINION RUBBER CO LTD**

Bay Super Service Station ..... 3580  
Donald David res 627 9th St S ..... 3361  
Donald J A res 1312 4th Ave N ..... 3702  
Donaldson C S res 924 7th Ave S ..... 3389  
Donaldson Mrs Isabelle res 1242 7th Ave S ..... 2059  
Dorwin Mrs S R res 633 5th St S ..... 3725



Dow Jas ..... 91-1941  
Downer F W res 1 Strathcona Court ..... 3606  
Downing J C res 1262 7th Ave S ..... 2263  
Downs J H ..... 91-1523  
Doyle Larry res 1218 5th Ave S ..... 3687  
Doyle Paul J res 1 Tudor Manor ..... 4304  
Draffin George res 318 10th St S ..... 4171  
Drinkall W H ..... 91-1623  
Drowley Georgina res 615 11th St S ..... 2677  
Drysdale James res 802 7th St S ..... 2304  
Dueck Jacob P ..... 91-4012  
Dueck Peter P ..... 91-2341  
Duff Arthur res 914 12th St S ..... 3126  
Duff Donald A res 750 7th Ave S ..... 2004  
Duffy P E res 542 7th St S ..... 3283  
Duncan Claude A res 1302 7th Ave S ..... 4342  
Duncan Claude A ..... 91-1113  
Duncanson F R res 613 13th St S ..... 3235  
Dunlop R res 1252 4th Ave S ..... 4168

**DUNLOP TIRE & RUBBER GOODS**

CO LTD 7th St S ..... 4353

**DUNN'S TAILORS** Frank Moore Mgr

324 7th St S ..... 2811

Dupen A E New Barnes Mine ..... 91-3011  
Dupen A E res 625 7th St S ..... 3418  
Dutton E E res 528 15th St S ..... 3665  
Dutton W res 1253 6th Ave S ..... 3983  
Dykes Andrew M res 331 20th St N ..... 2495  
Dykstra H D ..... 91-1432

**E**

Easton John res 917 8th St S ..... 2411  
Easton T res 709 12th St S ..... 2641

**EATON CO WESTERN LTD (THE T)**

Branch Store 4th Ave & 6th St S  
Information & General Office ..... 3727  
Drugs Hosiery Men's Wear Notions ..... 2140  
Groceries Meats Fruits ..... 3282  
Hardware Automobile Supplies Stoves ..... 2054  
Sporting Goods China Baggage Piece Goods  
Shoes Optical ..... 3857  
Wools Fancy Goods Ladies' & Children's Wear ..... 3605  
Furniture House Furnishings Radios ..... 2722

**ECONOMY GROCERY** J W Moss

902 9th St S ..... 2035  
Economy Meat Market 904 7th Ave S ..... 3855  
Edmunds Mary res 938 7th St-A S ..... 3027  
Edmundson Fred res 533 6th St S ..... 4388  
Edwards George res 533 12th St-A N ..... 3967

**EDWARDS WM M** Land Surveyor

11 Oliver Blk ..... 4034  
Edwards Wm M res 529 14th St S ..... 3979  
Eggarie Mrs M res 931 10th St S ..... 3965  
Eichenlaub Rev V res 710 16th St N ..... 4336  
Eldridge P M res 1314 4th Ave S ..... 2794

**ELECTROLUX (CANADA) LTD**

416 13th St S ..... 2402  
Elfstrom H res 318 4th St S ..... 2849  
Elks Club 5th Ave S ..... 2633  
Elliott Jack W res 1105 3rd Ave S ..... 4089  
Elliott Oliver G res 916 7th Ave S ..... 4019



# FAT'S <sup>STEVE SMEREK</sup> TAXI 3838

24 HOUR SERVICE

Ellis H J res 636 12th St S ..... 2499

## ELLISON MILLING & ELEVATOR

**CO LTD** 2nd Ave S  
Sales Flour & Feed ..... 2068  
Grain Dept ..... 4214  
Manager & Accounting Dept ..... 3552  
Elevator—Coaldale ..... 91-2514  
Elevator—Coalhurst ..... 91-3424

Ellison R C res 1243 6th Ave-A S ..... 4350  
Eltherington Geo R res 533 13th St S ..... 2269

## ELTON DAVID HORTON K.C.

Barr Solr Notary Public 2 & 4 Stafford Blk ..... 2523  
Elton David Horton res 1209 7th Ave S ..... 3709  
Elzada Beauty Shoppe 122 McFarland Bldg ..... 2096  
Emma's Hot Tamale Parlor 318 3rd Ave S ..... 2763

## EMPLOYMENT SERVICE OF

**CANADA** 243 7th St S ..... 2603  
Empress Confectionery 814 4th Ave S ..... 2872  
Enns Jacob ..... 91-4014  
Entomological Branch Post Office Bldg ..... 3222  
Laboratory ..... 91-1515  
Epp Dr D L Phys & Surg Office ..... 91-2422  
Epp Dr D L ..... 91-2415  
Erb M E res 20 Victoria Mansions ..... 3710  
Erdmann Ralph res 1221 7th Ave S ..... 4104  
Erickson M res 814 2nd Ave S ..... 3873  
Evans T res 611 8th St S ..... 3275  
Evernden C S ..... 91-2532  
Everson W E res 14 St & 5th Ave S ..... 2484  
Ewart D ..... 91-2822

## EXIDE BATTERY DISTRIBUTORS

7th St S ..... 4353  
Experimental Farm W H Fairfield Coaldale Rd. 3385

## EXPLOSIVES LTD Hoyt Hardware Ltd

Agts 608 3rd Ave S ..... 3860

## F

## FAIRBAIRN L E Barr Solr & Notary

Bank of Nova Scotia Bldg ..... 4065  
Fairbairn L E res 922 3rd Ave S ..... 2249  
Fairfield W H Office & Res Experimental Farm. 3385  
Fallwell George res 604 7th Ave S ..... 4233

## FARMERS' MARKET Hudson's Bay Bldg

Cor 1st Ave & 5th St S ..... 3058  
Farrell R res 213 5th Ave S ..... 2592  
Farrell W J res 527 14th St S ..... 3023  
Farries John ..... 91-1013  
Farris R C res 281 7th Ave-A S ..... 2031  
Farris Service Agency Collins & Acctg 2 Acadia Blk. 2616  
Farstad C W res 1252 6th Ave-A S ..... 2119

## GARRETT FURRIERS

FURS OF QUALITY

AT  
POPULAR PRICES

REMODELING - REPAIRING - RELINING  
COLD STORAGE - CLEANING - GLAZING

HULL BLOCK - Phone 3812

## FAT'S TAXI S Smerek 323 5th St S ..... 3838

Faulkner E res 701 12th St N ..... 2130  
Faunch E J res 924 10th St S ..... 2590

## FEFFERMAN HIDE & FUR CO

518 4th Ave S ..... 4035  
Fefferman M res 704 6th Ave S ..... 2318  
Fekete William res 512 5th St S ..... 3261  
Felger T H res 1304 6th Ave S ..... 2083  
Ferguson J res 312 15th St S ..... 3306  
Ferguson James Y res 1809 1st Ave-A N ..... 3910  
Ferrier J J res 419 8th St S ..... 3969  
Filchak Vincent res 541 12th St N ..... 2682  
Filmer J res 922 12th St S ..... 3217  
Findlay A res 1415 3rd Ave N ..... 4365

## FIRE DEPARTMENT (Fire only) ..... 3333

First Baptist Church 8th St & 4th Ave S ..... 2082  
Firth H res 715 17th St N ..... 3731  
Firth J J res 502 14th St S ..... 3870  
Fisher A M res 1217 6th Ave S ..... 2531  
Fisher Mrs Nell res 611 9th St S ..... 4160  
Fisher Ralph res 327 13th St N ..... 4389  
Fitzsimmons H H ..... 91-4135  
Fleetwood Confectionery P Forbes 902 11th St S 3625  
Fleetwood E H res 920 9th Ave S ..... 3985  
Fleetwood T H res 803 11th St S ..... 3795  
Fleming A res 312 14th St S ..... 3703  
Fleming Mildred res 312 3rd St S ..... 2070  
Fletcher Dr C M Dentist 5 Oliver Blk ..... 3410  
Fletcher Dr C M res 638 15th St S ..... 3673  
Flett U A res 6 Victoria Mansions ..... 2638  
Flinn Wm res 1259 5th Ave-A S ..... 3245  
Flock H J res 1301 5th Ave S ..... 4317

## FLOCK'S FUNERAL HOME

1110 3rd Ave S ..... 2929  
Ambulance Service

Fong Edward res 308 1st Ave S ..... 2932  
Fooks J H res 1234 4th Ave S ..... 3511  
Forbes Dr G H Dentist 1 Stafford Blk ..... 2026  
Ford C H res 721 3rd St S ..... 3241

## FORD SALES & SERVICE

435 5th St S ..... 3633  
Forrest J A res 628 7th St S ..... 3372  
Forster Agency The 306 7th St S ..... 2793

STOP  
AT  
T

## TED'S TERMINAL

"SMILE A MINUTE SERVICE STATION"

IMPERIAL 3 STAR & ESSO GASOLINE

MARVELUBE & MOBILOIL MOTOR OIL

410 - 3rd Ave. S.

ATLAS TIRES

Phone 2684





**STEVE'S**  
**TAXI 4058**  
24-HOUR SERVICE

Forster C E res 612 13th St S .....4181  
Forster E R J res 626 10th St S .....3883  
Forster Fred res 1240 5th Ave-A S .....4156  
Forsyth James E Cartage Contr 2033 1st Ave N .....2729  
Foster Frank .....91-2533

**FOUR X BAKERY**

(See Canadian Bakeries Ltd) .....3266  
Fourth Avenue Hairdresser 512 4th Ave S .....4217

**FOWLER DR DOUGLAS B Phys &**

Surg Hull Blk .....2622  
Dr Douglas B Fowler res 1403 5th Ave S .....4356

**FOWLER'S GREENHOUSES**

730 6th St S .....3179  
Fox Mrs Constance res 1219A 4th Ave S .....3255  
Fox G H res 626 15th St S .....3931  
Fox Norman res 329 15th St N .....3988  
Fozard Mrs John res 530 12th St-B N .....2790

**FRACHE BROS LTD Florists Retail**

Store 322 6th St S .....2666  
W E Reed Night Calls res .....3783  
Greenhouses Henderson Park .....2003  
Greenhouses North Lethbridge .....2768

Frayne Elsie res 1414 4th Ave N .....4193  
Frear Mrs Esther res 631 5th St S .....4198  
Frear H C res 526 5th St S .....2458  
Freel James res 405 4th St S .....3793  
Freel Rodina res 321 6th Ave-A S .....2181

**FREEL SHEET METAL WORKS**

412 4th Ave S .....2713

**FREIGHTWAYS CANADIAN**

518 5th St S .....2945

Frey E E .....91-2924  
Frey I res 732 13th St S .....3720  
Frier S res 1401 6th Ave-A N .....2629  
Friesen Garage J C Friesen .....91-2522  
Friesen J C .....91-2525

**FRIGIDAIRE Sales & Service**

Roy Electric Co 406 5th St S .....3735  
Fuller H B .....91-3623  
Fumerton Dr A S Dentist 3 Oliver Blk .....2199  
Fumerton Dr A S res 634 15th St S .....2718

**G**

Gaetz L O res 1236 8th Ave S .....3916  
Gahn K W res 511 12th St S .....2623  
Galbraith Mrs W S res 616 14th St S .....2253  
Galdzinski J res 284 7th Ave-A S .....2564

**Jones**  
LONG DISTANCE MOVING  
PHONE 2904  
STORAGE

**GALT HOSPITAL** General Office 5th Ave S .....3136  
Private Branch Exchange connecting all Depts  
Residence 204 5th Ave S .....2608

**GALT SERVICE STATION**

cor 4th Ave & 9th St S .....2728

**GARBUTT BUSINESS COLLEGE**

Mrs S R Bennett Principal Masonic Hall Bldg .....2315

Garden Clothing Co 318 5th St S .....4210

**GARDEN HOTEL** 510 3rd Ave S .....3889

Gardiner C res 606 11th St S .....2962

Gardner R W res 301 6th Ave-A S .....2446

Gareau A H res 513 12th St N .....4285

**GARRETT FUR STORE** 707 3rd Ave S .....3812

Garvin Rev E L res 803 6th Ave S .....4303

**GAS COMPANY** 420 6th St S .....2510

Gates W H res 1253 6th Ave-A S .....2514

Gaught H res 408 12th St-B N .....3274

Gavron Michael res 721 16th St N .....2975

Geiger C res 1265 5th Ave-A S .....3668

**GENERAL GARAGE & AUTO PARTS**

320 9th St S .....2685

George L B res 1105 7th Ave S .....2868

Gervais J res 327 11th St S .....2546

Ghert Joe res 643 8th St S .....4082

Gibbons Miss G I res 509 14th St S .....2597

Gibbons R V Agencies Metcalfe Bldg .....2191

Gibson Chris res 1405 9th Ave S .....2983

Gibson Mrs I res 1237 6th Ave-A S .....4321

Gibson John res 622 7th St S .....3234

Gibson Miss M res 1607 7th Ave S .....4137

Gibson Dr M J Dentist 5 6 & 7 Lafferty Blk .....2071

Gibson Dr M J res 610 8th St S .....2896

Gilchrist Lee res 202 15th St N .....2362

Gill J res 1207A 5th Ave S .....3739

Gillespie S J res 637 7th St S .....4125

Gilmour R res 901 9th Ave S .....3149

Gladden R F res 3 Galt Manor .....3515

Glasser G res 722 17th St S .....3894

Glazyer D res 519 6th St S .....2141

Glock J res 920 10th St S .....4037

Glover Electric 817 3rd Ave S .....2669

Glover R M res 414 5th Ave S .....2538

Godfrey K S res 510 19th St N .....2948

Gogan J J res 144 16th St N .....2670

Goldie J S res 307 7th Ave S .....4263

Goodall C F res 617 14th St S .....2749

Goodman E res 706 3rd Ave S .....2457

Goodman Morris res 322 5th Ave S .....2148

Goodyear Tire & Rubber Co H R Carson Ltd

Distributors 316 7th St S .....3155

Gordon James res 412 12th St-C N .....3950

**GORDON DR W H A Phys & Surg Hull Blk** 2622

Dr W H A Gordon res 542 8th St S .....4287

Government Beer Warehouse 1st St & 2nd Ave S .....3554

Government Liquor Store 411 3rd Ave S .....3989

**GOVERNMENT TELEPHONES**

See Alberta Government Telephones

Gow G res 1210 3rd Ave S .....4394

Graham Austin W Upholsterer 635 6th St S .....3470

Graham John M .....91-2515

Graham W & J .....91-2413

Gray A S res 1220 5th Ave S .....2916

Gray G res G Hull Blk .....2420

Gray H res 406 5th Ave S .....3776

Gray J B res 1419 4th Ave N .....2881

**GREAT WEST DISTRIBUTORS LTD**

Warehouse—Hi-way Station .....91-1014