

Lethbridge and District

Telephone Directories

3
2
1919

YEAR 1919 TELEPHONE 1919
CONSUMERS HARDWARE & SUPPLY CO.

The Best
In Mail
Insurance

United Assurance Co.

See Local Agent for Terms



OFFICIAL
**TELEPHONE
DIRECTORY**

JANUARY, 1919

**LETHBRIDGE
AND DISTRICT**

Complete
Listed
With
Telegraphic
Service

**IN A HURRY?
SEND YOUR PRINTING TO
THE LETHBRIDGE HERALD**

Want
Ads
Printed
Quick
Results

PHONE

3 6 3

PAINLESS AMERICAN DENTISTRY

OH Block, Three Doors From Lethbridge Hotel

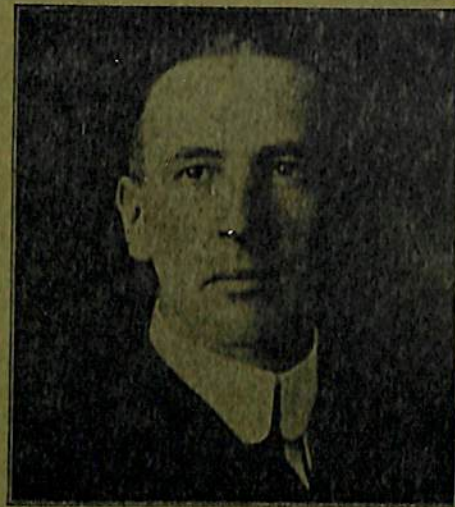
PHONE

3 6 3

Drs. BRUNER, RICHARDS & NELSON

Frank Waddington

Conducts
Sales
in any Part
of the
Province
on
Reasonable
Terms



20 Years
in the
Business

10 Years
in the West
Experience
Counts

OFFICE
PHONE
770

RESIDENCE
PHONE
469

AUCTIONEER
LETHBRIDGE EST. 1907 ALBERTA

Always
in the Market
for
Stocks of
Merchandise,
Furnishings,
etc.

See me
before
you sell



Hotels,
Boarding
Houses and
Private
Homes
Furnished

If you Live in
the Country,
write me

AUCTION AND STORE ROOMS

S.O.E. BUILDING **10th STREET SOUTH**
LETHBRIDGE

CONSUMERS HARDWARE & SUPPLY CO.
General Phones 1919-1212 Office Phone 1920

HIGH CLASS AUTO REPAIRING
Phone 564 **Standard Garage**
Distributors of "VELIE" Cars for Alberta

Phone **W. J. NELSON & CO.**
Boots and Shoes
1335 620 3rd AVE. S. LETHBRIDGE

Phone **Star Electric Co.**
Electric Wiring and Supplies
1332 409 5th ST. S. LETHBRIDGE

Phones **RED CROSS DRUG & BOOK**
555 **COMPANY, LIMITED**
1232 Sherlock Building LETHBRIDGE

P. LUND & SON
LUMBER
Phone 516 3rd Ave. S., LETHBRIDGE

Handy List of Telephone Numbers Frequently Used

SUBSCRIBER	PHONE NO.	SUBSCRIBER	PHONE NO.
Ambulance			
Coal & Wood			
Dentist			
Doctor	Office		
"	Residence		
Druggist			
Electric Light			
FIRE			
Gas			
Grocer			
Laundry			
Meat Market			
POLICE			
Plumber			
Street Railway Dept.			
Telephone Office:—	1234		
LETHBRIDGE			

LETHBRIDGE
Information 9 ——— Trouble 8 ——— Rural 2

Phone **MacKAY & BELL**
1802 UNDERTAKERS
803 3rd AVE. S. LETHBRIDGE

PHONE **ALLISON'S STUDIO**
1689 High Class Portraiture a Specialty
B Imoral Block LETHBRIDGE

Phone **FRACHE BROS.**
1003 For Cut Flowers and Funeral Designs
SEE ADVT. ON PAGE 14

Phone **LETHBRIDGE**
1664 **VULCANIZING WORKS**
E. CHAPLIN, Proprietor
712 Third Avenue South

Phone **Walker & Holberton**
521 PLUMBERS
See Advt. on Page 14

Phone **Delany's Meat Co.**
452 311 5th ST. S. LETHBRIDGE

Advertise Your Merchandise

in the

Telephone Directory

Thousands of People use this Directory daily.

The Directory is on duty day and night throughout the year.

It is the Best and Cheapest Advertising Medium at your disposal.

The insertion of Names of Business and Professional Men in the Directory in Bold Black Face Type affords a valuable means of Publicity and facilitates the finding of names by the public.

Foot-lines and Business Cards interspersed throughout the Directory give you a Publicity that you can obtain by no other means.

No Selling Campaign is complete To-day if it fails to make easy Buying by Telephone.

The Directory is a Salesman that never Tires!

Let your Advertisement Speak for Itself!

**The Next Issue of the Telephone
Directory Closes on June 1st, 1919**

FOR ADVERTISING RATES APPLY

Directory Advertising Department

Alberta Government Telephones

128 7th Avenue West, Calgary, Alberta

ALBERTA GOVERNMENT TELEPHONES

OFFICIAL TELEPHONE DIRECTORY

Head Office:

PROVINCIAL BUILDINGS, EDMONTON

HON. CHAS. STEWART,

Premier,

Minister of Railways and Telephones.

N. L. HARVEY,

Acting Deputy Minister of Railways
and Telephones.

W. R. PEARCE,

General Superintendent,
Edmonton.

Copy for this Edition closed December 1st, 1918.

This Directory is the property of the Alberta Government, and is printed for the exclusive use of their patrons, and they assume no liability whatever for damages occurring from errors or omissions in the making up and printing of this book.

Department of Railways and Telephones

TERMS AND CONDITIONS UNDER WHICH TELEPHONE SERVICE IS FURNISHED

1. Telephone instruments and connecting lines are furnished to subscribers to be used in accordance with the rules as prescribed by the Department from time to time, and are to be used only by the subscriber, his agents or employees when engaged upon his business and must not be used for transmitting, receiving or delivering any message or communication in respect of which a consideration has been or is to be paid by any other party, except as permitted by the rules of the Department, nor used in any way in competition with the telephone business conducted by the Department. Subscribers will not be allowed to transfer their telephone number, service, or contract to any other party, unless arranged for in advance by a duly authorized official of the Department.

2. The lines and instruments over which the service is furnished remain the property of the Government and subscribers must not use or permit any electrical or mechanical connection or apparatus being made with the said lines or instruments without the written consent of the Department.

3. When it is necessary to erect poles or anchors in order to carry the wires from the main telephone line on the road allowance or street to the applicant's premises, such poles and anchors in connection therewith will be supplied and erected by the Department at the expense of the applicant, or if arranged for in advance in writing, the applicant may furnish and erect such poles and anchors in accordance with the specifications and regulations of the Department.

4. All charges for installations, moves and monthly rentals shall be paid in advance, which shall entitle the subscriber to service with all subscribers connected to the same exchange. Regular toll rates will be charged for all service to points outside of the exchange.

5. Subscribers shall pay the installation charges, first rental instalment (and construction charges, if any) strictly in advance. Excess mileage charge will be added if outside of exchange limits. If subsequent rental accounts remain unpaid after the 25th of the month, service shall be discontinued and if still remaining unpaid after the end of the month, service shall be discontinued and a charge of \$1.00 shall be made to reconnect service; no rebate or reduction shall be allowed for such interruption to service.

6. Subscribers shall pay monthly, at schedule rates, for all messages and conversations over the Long Distance lines. If said accounts remain unpaid after the 25th of the month, further credit shall be refused until account is paid.

7. No allowance will be made on complaint of inefficient Long Distance service unless such complaint be made to Chief Operator, immediately after conversation has taken place.

8. Subscribers shall pay promptly, upon presentation of account, all charges for other miscellaneous items. If these charges are not paid within 15 days, service shall be discontinued.

9. Should a subscriber desire to have his **Exchange Residence Service** temporarily discontinued, owing to the closing of his residence, he may do so without cancelling contract or having telephone removed and, if arranged for in advance in writing, an allowance of one-half of the rate per month will be made for a period not to exceed three months in any one year. Subscriber shall state, when making application, the period for which he expects to be absent and shall pay for this period in advance. Subscriber will notify the Department when he wishes service resumed.

10. The telephone is first located where the subscriber directs and must not be moved or interfered with. When the subscriber desires to have the telephone moved to any other location, he is requested to fill in the blank form in back of Directory and forward, with remittance covering charges for same, to local agent, at least ten days before change is desired. The work will then be done as promptly as possible at the expense of the subscriber.

11. If a telephone installed for service at the residence rate be used for the purposes of a business or profession, or otherwise than for the usual requirements of a residence, the Department may charge the business rate for such service without regard to the date to which the subscriber has paid for service at the residence rate. This also applies to subscribers, for residence service only, who advertise or use their telephone number in connection with their business or profession.

12. The Department will endeavor to keep the lines and instruments in good working order and undertake to clear trouble or make repairs with all reasonable despatch but does not guarantee uninterrupted service.

13. A subscriber's telephone number is not a part of the application for service, but numbers will only be changed when absolutely necessary or for the betterment of the service.

14. The use of obscene, profane or abusive language while using the telephone is strictly forbidden and service may be immediately discontinued for violation of this rule.

DIRECTORY REGULATIONS

This Directory is the property of the Alberta Government and is loaned to telephone subscribers for their use, to be retained until the delivery of the next issue. Subscribers are furnished free one copy for each instrument. Additional copies will be charged for, 25c per copy.

Copy for Directory Information will be closed on the following dates.—

January Issue.....December 1st

July Issue.....June 1st

No insertions, changes or corrections may be made after the date set for the closing of copy.

Each subscriber is entitled to one single line entry in the Alphabetical List without charge. Listings in bold type will be charged at the rate of Two Dollars per issue. By special arrangement any subscriber to Exchange Business Service may have the name of any company which he represents, or of any employee or agent, listed in Directory at a nominal charge of One Dollar per line per issue. A subscriber to Exchange Residence service may have the name of a bona fide member of his family listed in the Directory for One Dollar per line per issue. When it is desired to insert the name of a person not an actual member of the family, the charge will be Three Dollars per issue, which includes Exchange Service.

Subscribers are requested to report promptly to the Local Office, in writing, any errors which may appear in this Directory, so that same may be corrected in the next issue.

The Alberta Government Telephones assume no liability whatever for damages occurring through errors or omissions in the making up and printing of this Directory.

INSTRUCTIONS

FOR USE OF AUTOMATIC TELEPHONE AT Calgary, Lethbridge and Medicine Hat

CONSULT THE DIRECTORY IN ALL CASES BEFORE PLACING A CALL.
DO NOT TRUST TO YOUR MEMORY.

- (1) Remove receiver from hook before operating dial.
- (2) Bring the finger squarely to the finger stop.

IMPORTANT—When calling a number allow a slight interval to elapse between each figure.

- (3) Face the transmitter with the lips almost touching the mouthpiece. Speak naturally, distinctly, and not too rapidly.
- (4) Do not move receiver hook or dial while talking, as this will disconnect you.
- (5) Always hang up receiver for a short interval before making a second call, to allow the mechanism to release.
- (6) Hang receiver on hook (small end up) when through talking, otherwise no one can obtain connection with your telephone.
- (7) BUSY BUZZ. If, after calling a number, a buzzing sound is heard, it indicates that the number called for is busy.

EXAMPLE

To call M2300—Remove receiver from hook, place finger in finger hole M and pull dial down until finger reaches the finger stop, let dial rotate back; then in same manner pull 2-3-0-0.

Dial will rotate back. Do not interfere with this backward motion.

Place receiver to your ear. If the busy buzz is heard it indicates that M2300 is busy. This being the case, hang up the receiver and call again within a reasonable time.

At completion of conversation, hang receiver on hook, small end up.

You are now entirely disconnected and ready to call another number or to be called.

If a mistake is made in calling the correct number or if the dial is improperly operated, the receiver must be hung up before calling again. If connection is accidentally broken it should be restored by the calling party. When using an extension telephone, listen and speak before operating dial.

AUTOMATIC EXCHANGES

INFORMATION

Call Information for NUMBERS of New Subscribers, Changes, Long Distance Line Charges, New Toll Offices, etc.

TROUBLE

Complaints regarding Telephone Troubles should be reported to Trouble Operator. When reporting trouble give telephone number affected and its location, also state as accurately as possible just how trouble manifests itself. Try to be specific as incomplete information frequently causes delay in locating nature of trouble. If a line you are trying to call repeatedly tests "busy" notify Trouble Clerk, who will investigate whether same is caused by an abnormal condition on line or from use. If any line appears too busy for good service write to the Commercial Manager. Subscribers are requested not to engage Trouble or Information Clerks in conversation longer than necessary, as by so doing the clerk will be prevented from giving prompt attention to other patrons.

INSTRUCTIONS

FOR USE OF MANUAL TELEPHONE

CONSULT THE DIRECTORY IN ALL CASES BEFORE PLACING A CALL.
DO NOT TRUST TO YOUR MEMORY.

To call the Operator give one long ring before removing the receiver from the hook and then hold the receiver to the ear. When the Operator replies by saying "Number?" give the number of the subscriber's telephone desired, slowly and distinctly. At multi office exchanges first indicate the exchange desired by the prefixed letter and then pronounce the number by digits.

For example:—"M1429" should be pronounced "M one-four-two-nine."

At other exchanges pronounce the number desired by digits.

For example:—"175" should be pronounced "One-seven-five."

Note.—To call the operator at Camrose or Wetaskiwin (Common Battery exchanges) remove the receiver from the hook and proceed as instructed above.

When finished talking, place the receiver on the hook, small end up. No ringing, except by rural line subscribers, is necessary at these exchanges.

Keep the receiver to the ear, and the Operator, after repeating the number, will connect you with the Subscriber called for. If the desired line is found to be in use, the Operator will report "Line Busy."

When you have finished talking place the receiver on the hook, small end up, and give a short ring. This gives the Operator a signal to disconnect, and you are then in a position to call another number or to be called.

ANSWER THE CALLS ON YOUR TELEPHONE PROMPTLY BY ANNOUNCING YOUR TELEPHONE NUMBER.

Face the Transmitter with the lips almost touching the mouthpiece. Speak naturally, distinctly, and not too rapidly.

Call "Information" for subscribers or changes not found in this Directory.

DO NOT USE THE TELEPHONE DURING A THUNDER-STORM.

Rural line subscribers should limit their local conversations to FIVE MINUTES duration, and must not "listen-in" to conversations not intended for them as it interferes with the service.

COMPLAINTS.

Complaints regarding telephone trouble should be made to the Chief Operator at the office concerned and if not rectified within a reasonable time the matter should be referred to the Traffic Superintendent at Edmonton.

NOTICE



TO TELEPHONE SUBSCRIBERS AND THE PUBLIC

All employees of the Alberta Government Telephones whose duties require them to enter the premises of subscribers or others, are required to wear a badge similar to that illustrated above. The public is hereby notified to require all persons who desire to enter their buildings or premises for purposes in connection with the Telephone to exhibit their badges and note the numbers of the same. Any person claiming to be an employee of the Alberta Government Telephones, who is without this badge, should be refused admission and the Local Agent be notified at once by telephone.

LONG DISTANCE SERVICE

RULES AND REGULATIONS.

To make a Long Distance Call—Call "Long Distance" in the regular way. When the Long Distance Operator answers, give the number of the Telephone from which you are speaking, your own initials and name, the initials and name of the particular person desired and the city or town where he can be located.

Example.—"Number M4567, J. H. Brown speaking. Get W. K. Jones at Edmonton. If he is not there I will speak to A. F. Smith."

Long Distance Charges.—All rates quoted are for an initial period of three minutes. For overtime beyond the initial period a proportionate charge is made per minute.

Long Distance Tolls will be charged to the Subscriber from whose instrument the Long Distance message is sent.

Night Rates.—From 19k to 7k (7 p.m. to 7 a.m.) a Night Rate of about one-half the day rate is in effect over the Long Distance Lines of the Government, except on business with Saskatchewan Government Telephones' points. In no case is the night rate less than 25 cents, unless the day rate is less, in which case the night and day rates are the same.

Reversal of Charges.—All charges will be made against the Originating Office except those messages for which the receiving party expressly agrees to pay. The assent of the receiving party to a reversal of charges should be obtained before the connection is established.

Messenger Service.—Upon request, and the prepayment of reasonable charges, a messenger will be sent when possible to notify a non-subscriber to come to any Public Pay Station.

When a Particular Person is Desired the Long Distance Operator must be so advised when the call is placed, otherwise charge will be made from the time connection is established with the Telephone desired, whether the party required is obtained or not.

Supervision by Private Branch Exchange Operators.—The Long Distance Operator is held responsible for the supervision and timing of all messages and for the character of the service furnished. Supervision of connections by Private Branch Exchange Operators interferes with the service and such operators should not remain "cut in" on the line after the connection has been established.

Slot Machine Pay Station Service.—Slot Machine Telephones have been installed by the Department, for the convenience of subscribers and the general public, in suitable locations throughout our cities.

Local conversations may be had from these Telephones at a charge of 5 cents for 5 minutes.

Long Distance service is furnished at regular tariff rates upon deposit of the amount of the initial charge (covering three minutes' conversation), the usual charges being made for excess time.

Non-Subscribers who desire to use subscribers' telephones should be referred to the nearest Public Pay Station.

COMPLAINTS regarding unsatisfactory Long Distance service should be made to the Chief Operator at the office concerned, and if not then rectified the matter should be referred to the Traffic Superintendent, Edmonton.

LONG DISTANCE RATES

From Lethbridge

To Places connected with the Long Distance Lines of the Alberta Government Telephones and Connecting Systems in Alberta.

NIGHT RATES—From 19k to 7k (7 p.m. to 7 a.m.) a night rate of about one-half the day rate is in effect over the Long Distance Lines of the Government, except on business with Saskatchewan Government Telephones' Points. In no case is the night rate less than 25 cents, unless the day rate is less, in which case the day and night rates are the same.

See page 12 for list of places in Saskatchewan and Alberta, between which service can be given. Rates to these points can be obtained by calling "Long Distance."

NOTE:—These Rates are Subject to Change without Notice.

TO	(Day Service) Three Add'l Mins. Min.	TO	(Day Service) Three Add'l Mins. Min.	TO	(Day Service) Three Add'l Mins. Min.
	\$ c. \$ c.		\$ c. \$ c.		\$ c. \$ c.
Acme.....	.80 .25	Camrose.....	1.50 .50	Eagle Butte.....	.70 .20
Airdrie.....	.75 .25	Campbellton.....	1.35 .45	Earlie.....	1.65 .55
Alderson.....	.50 .15	Canmore.....	.90 .30	Eckville.....	1.40 .45
Aldersyde.....	.55 .15	Carbon.....	.80 .25	Edberg.....	1.35 .45
Alice Lake.....	1.50 .50	Cardston.....	.30 .10	Edgerton.....	1.50 .50
Alix.....	1.15 .35	Carmangay.....	.25 .05	Edmonton.....	1.65 .55
Allerston.....	.40 .10	Carstairs.....	.90 .30	Edward.....	1.95 .65
Alliance.....	1.20 .40	Castor.....	1.10 .35	Edwell.....	1.05 .35
Amisk.....	1.35 .45	Cayley.....	.45 .15	Elk Point.....	1.80 .60
Andrew.....	1.80 .60	Cereal.....	.95 .30	Elnora.....	1.00 .30
Angle Lake.....	1.80 .60	Chahley.....	1.95 .65	Enchant.....	.25 .05
Ardrossan.....	1.65 .55	Chamberlain.....	1.80 .60	Entwistle.....	1.80 .60
Athabasca.....	2.10 .70	Champion.....	.30 .10	Erskine.....	1.15 .35
		Chauvin.....	1.50 .50	Evarts.....	1.35 .45
Banff.....	1.00 .30	Cheadle.....	.60 .20	Everett.....	1.50 .50
Barons.....	.20 .05	Chigwell.....	1.20 .40	Exshaw.....	.85 .25
Barrhead.....	1.95 .65	Chin.....	.15 .05	Fallis.....	1.80 .60
Bashaw.....	1.20 .40	Chinook.....	.90 .30	Ferintosh.....	1.35 .45
Bassano.....	.50 .15	Chipman.....	1.65 .55	Fishburn.....	.30 .10
Battle Lake.....	1.50 .50	Clareholm.....	.30 .10	Foremost.....	.40 .10
Battleview.....	1.50 .50	Clive.....	1.20 .40	Forestburg.....	1.35 .45
Bawlf.....	1.35 .45	Cluny.....	.50 .15	Fort Saskatchewan.....	1.80 .60
Beazer.....	.35 .10	Clyde.....	1.95 .65		
Beiseker.....	.75 .25	Coalhurst.....	.10 .03	Gadsby.....	1.10 .35
Belvedere.....	1.95 .65	Cochrane.....	.80 .25	Gainford.....	1.80 .60
Bentley.....	1.20 .40	Comrie.....	1.95 .65	Galahad.....	1.20 .40
Big Fish Lake.....	1.80 .60	Conjuring Creek.....	1.50 .50	Gem.....	.55 .15
Big Valley.....	1.00 .30	Consort.....	1.15 .35	Gleichen.....	.55 .15
Blackfalds.....	1.20 .40	Cooking Lake.....	1.65 .55	Glenwoodville.....	.25 .05
Blackie.....	.45 .15	Coronation.....	1.10 .35	Grainger.....	.80 .25
Blairmore.....	.45 .15	Countess.....	.50 .15	Granum.....	.25 .05
Bon Accord.....	1.80 .60	Coutts.....	.40 .10	Grassy Lake.....	.35 .10
Bordenave.....	1.95 .65	Cowley.....	.35 .10	Greenshields.....	1.50 .50
Botha.....	1.10 .35	Craigmyle.....	.85 .25	Gull Lake.....	1.20 .40
Bottrel.....	.90 .30	Crossfield.....	.85 .25	Half Way Lake.....	1.95 .65
Boundary Creek.....	.35 .10	Cummings.....	1.50 .50	Halkirk.....	1.10 .35
Bowden.....	1.00 .30	Curlew.....	.95 .30	Hanna.....	.85 .25
Bowell.....	.55 .15	Currey.....	1.65 .55	Hardisty.....	1.35 .45
Bow City.....	.35 .10	Czar.....	1.35 .45	Harmattan.....	1.00 .30
Bow Island.....	.45 .15			Hastings Coulee.....	1.20 .40
Brant.....	.45 .15	Dalroy.....	.70 .20	Hay Creek.....	1.95 .65
Brocket.....	.30 .10	Daysland.....	1.35 .45	Hazel Bluff.....	1.95 .65
Brooks.....	.45 .15	Delburne.....	1.10 .35	Heath.....	1.50 .50
Brosseau.....	1.80 .60	Delia.....	.85 .25	Heisler.....	1.35 .45
Brownsdale.....	.40 .10	De Winton.....	.60 .20	Hetherington.....	1.50 .50
Bruce.....	1.50 .50	Diamond City.....	.10 .03	High River.....	.50 .15
Bruderheim.....	1.80 .60	Didsbury.....	.90 .30	Highfield.....	.40 .10
Burdett.....	.40 .10	Donalda.....	1.20 .40	Hilliard.....	1.65 .55
Burnt Lake.....	1.25 .38	Doreenlee.....	1.35 .45	Hillspring.....	.30 .10
		Doucette.....	1.80 .60	Hobbema.....	1.35 .45
Cadogan.....	1.35 .45	Downing.....	1.80 .60	Holden.....	1.50 .50
Cairns.....	1.35 .45	Drumheller.....	.75 .25	Hughenden.....	1.35 .45
Caldwell.....	.35 .10	Duchess.....	.55 .15	Huxley.....	.95 .30
Calgary.....	.70 .20	Dunstable.....	1.80 .60	Industrial School.....	1.25 .38
		Dusseldorf.....	1.95 .65	Innisfail.....	1.05 .35
		Duvernay.....	1.80 .60	Innisfree.....	1.65 .55

THE BEST ADVERTISING MEDIUM is the TELEPHONE DIRECTORY

Alberta Points

B.C. Points

11

LIMITED LONG DISTANCE CONNECTION

Between the following Points in Alberta
and
SASKATCHEWAN

NORTHERN DIVISION

Connecting via Lloydminster

BETWEEN

(Alberta Offices)

BRUDERHEIM
CHIPMAN
EDMONTON
FORT SASKAT'WAN

INNISFREE
ISLAY
KITSCOTY
LAMONT

LAVOY
LLOYDMINSTER
MANVILLE
MINBURN

MUNDARE
RANFURLY
VEGREVILLE
VERMILION

And

(Saskatchewan Offices)

BRESAYLOR
DELMAS
HANLEY

LASHBURN
MAIDSTONE
MARSHALL

N. BATTLEFORD
PAYNTON
S. BATTLEFORD

SASKATOON
WASECA

NOTE.—Edmonton and Hanley are the extreme points in the North CONNECTING VIA LLOYDMINSTER between which service can now be given.

Connecting with Provost

BETWEEN

(Alberta Offices)

AMISK
BAWLF
CADOGAN
CAIRNS
CAMROSE

CZAR
DAYS LAND
EDMONTON
HARDISTY
HASTINGS COULEE

HUGHENDEN
KILLAM
LEDUC
LOUGHEED
MERNA

METISKOW
PROVOST
SEGEWICK
STROME
WETASKIWIN

And

(Saskatchewan Offices)

ANGLIA
DENZIL
DODSLAND
DRUID

HERSCHEL
KERROBERT
LUSELAND
MACKLIN

PLENTY
ROSETOWN
SALVADOR

SASKATOON
STRANRAER
WILKIE

NOTE.—Edmonton and Saskatoon are the extreme points in the North CONNECTING VIA PROVOST between which service can now be given.

SOUTHERN DIVISION

Connecting via Medicine Hat

BETWEEN

(Alberta Offices)

ALDERSON
BASSANO
BLAIRMORE
BOW ISLAND
BOWELL
BROOKS
BURDETT
CALGARY
CARDSTON

DIAMOND CITY
GRASSY LAKE
IRON SPRINGS
IRVINE
LETHBRIDGE
MACLEOD
MAGRATH
MEDICINE HAT
NEW DAYTON

PASHLEY
PINCHER CREEK
PURPLE SPRINGS
RAYMOND
REDCLIFF
RETLAW
SEVEN PERSONS
SPRING COULEE
STIRLING

SUFFIELD
TABER
WALSH
WARNER
WHITLA
WINNIFRED

And

(Saskatchewan Offices)

ANTELOPE
BEVERLEY
CARMICHAEL
CARON
CHAPLIN
ERNFOLD
GULL LAKE

HATTON
HERBERT
INDIAN HEAD
LUMSDEN
MAPLE CREEK
MOOSE JAW
MORSE

MORTLACH
PARKBEG
PIAPOT
REGINA
ROULEAU
RUSH LAKE
STRASSBURG

SWIFT CURRENT
TOMPKINS
WALDECK
WEBB
WEYBURN
WOLSELEY

NOTE.—Calgary and Wolseley are the extreme points in the South CONNECTING VIA MEDICINE HAT between which service can now be given.

LETHBRIDGE

806 Fourth Avenue South

Local General Office Telephone 1234

Local Manager Telephone 375 •

Continuous Service

INFORMATION, TELEPHONE 9.

TROUBLE OPERATOR, TELEPHONE 8.

RURAL OPERATOR, TELEPHONE 2.

CHIEF OPERATOR, TELEPHONE 463.

Call Long Distance by operating "O" on dial.

Call Information (Telephone No. 9) for numbers of New Subscribers, Changes, Long Distance Line Charges, New Toll Offices, etc.

Report Telephone Out of Order to Trouble Operator, Telephone No. 8.

Report Unsatisfactory Long Distance Service to Chief Operator, Telephone No. 463.

For Rural Subscribers call No. 2 on dial and ask for number desired.

See page 28 for List of Rural Subscribers.

FOR FIRE CALL TELEPHONE 333.

PUBLIC PAY STATIONS:

- No. 5—Alexandra Hotel.....Fifth Street S.
- No. 9—Arcade Cigar Store.....Fifth Street S.
- No. 11—Arlington Hotel.....First Avenue S.
- No. 6—Canadian Pacific Railway Station.....First Avenue S.
- No. 4—Castle Hotel.....Second Avenue S.
- No. 1—Central Office.....Fourth Avenue S.
- No. 10—City Cigar Store.....Fifth Street S.
- No. 12—Coaldale Hotel.....Fifth Street S.
- No. 3—Dallas Hotel.....Fifth Street S.
- No. 7—Elite Cigar Store.....Fifth Street S.
- No. 2—Lethbridge Hotel.....Fifth Street S.
- No. 8—Y.M.C.A.....Tenth Street & Fourth Avenue S.

Phone 521

Office: 516 Fourth Ave. S.

WALKER & HOLBERTON

PLUMBING

Hot Water, Steam Heating and Pneumatic Water
• Systems for Country Houses

Repair Work a Specialty
Estimates Given

LETHBRIDGE
ALBERTA



Frache Bros.

WHOLESALE FLORISTS RETAIL

Phone 1003

ARTISTIC FUNERAL DESIGNS A SPECIALTY

Telegraph, Telephone and Mail Orders Receive Prompt Attention

HENDERSON PARK, LETHBRIDGE

(Henderson Park Cars Pass Door)

Taylor Milling & Elevator Co.

Manufacturers of

"Pride of Alberta" and "Mother's Favorite"
Flour and "Dr. Rusk's Chick Food"

Government Standard Flour but still TAYLOR MADE

PHONE 335

2nd Avenue South, LETHBRIDGE

WHEN IN LETHBRIDGE

VISIT

KIRKBY'S TEA ROOMS

WEDDING CAKES A SPECIALTY

HOME MADE BREAD

HIGH CLASS PASTRY AND CONFECTIONERY

Phone 1627

606 Third Ave. S., LETHBRIDGE

Lethbridge Exchange Subscribers

(For Rural Subscribers see Page 28)

A

- 1116 Addison George 404 5th St S
- 1221 Addison George res 536 12th St S
- 1777 Advance-Rumely Thresher Company Inc., J H Law Salesman
- 1380 Agnew Miss M L res Galt Mine Bldg
- 1302 Ainsworth E res 1249 6th Ave-A S
- 1083 Aird Jas res 1304 6th Ave S
- 627 Alberta Candies K of P Hall 5th St

ALBERTA GOVERNMENT TELEPHONES

- 375 Local Manager
- 1234 Local General Office
- 1827 Alberta Grill A M Merry Prop. 411 5th St S
- 492 ALBERTA MEAT MARKET R Coultry 342 18th St N
- 1724 Alberta Picture Gallery A Neidig Hull Block
- 1010 Alberta Provincial Police Court House
- 677 Inspector Piper's Office
- 372 Alberta Returned Soldiers Commission cor 1st Ave & 10th St S
- 764 Alberta Saddlery Co E M Carson Mgr 306 5th St S
- 403 E M Carson Mgr res 1233 5th Ave S
- 1245 Alberta Securities C R Daniel Pres 318 5th St S
- 1811 Alexander George res 424 7th St S
- 775 Alexander J Harry Mgr Heintzman & Co Ltd res 944 13th St S
- 562 Alexander J P res 1214 5th Ave S
- 1420 Alexandra Confect'n'y Arris Mihos cor 4th Av & 5th St S
- 717 Alexandra Hotel W J Stokes Prop 333 5th St S
- 1806 Allardice Wm res Hull Blk
- 1261 Allardice Wm Jnr res 316 15th St S
- 1165 Allen Dr L T Dentist room 9 McDonald Blk
- 1871 Allen Dr L T res 424 14th St S

- 1689 ALLISON'S STUDIO G W Allison Bal-moral Blk
- 1852 G W Allison res 907 7th Ave S
- 1848 Allwood C (Terrill Floral Co) res 308 Sherlock Bldg
- 651 American Consular Agent M P Johnston 9 Alberta Blk
- 363 AMERICAN DENTISTRY Drs Fruner Richards & Nelson Ott Blk 5th St S
- 485 Dr P W Richards res
- 356 Anderson G L res 542 12th St-A N
- 1024 Anderson O A res 409 12th St A S

- 745 ANGUS GEORGE Real Estate 10 Stafford Blk 311 1/2 5th St S
- 1601 Annetts Alberta res 427 19th St N
- 1278 Arlington Hotel Wm Porter Prop 1st Ave & 4th St S
- 1101 Armstrong Mrs Elizabeth res 626 14th St S
- 1248 Armstrong I H res 904 6th Ave SE

- 1727 ARMSTRONG & RAWORTH BROS Jewelers 324 5th St S

- 301 Armstrong W J res 1009 8th Ave S
- 1792 Arnold Mrs Albert res Room 23 Bryan Blk
- 1311 Arnold J M res 1004 6th Ave S
- 1373 Ascroft Mrs G res Suite 2 Hull Blk
- 1222 Asplin A res 277 7th Ave

- 1545 ASSINIBOIA MUSIC CO LTD P Forster Mgr 315 6th St S

- 379 Manager's Res 1202 5th Ave A S

- 1206 AUTO LIVERY BOULTON'S TAXI 523 6th St S

- 1142 AUTO LIVERY A G Spence 4th Ave S

- 428 387 AUTO LIVERY United Taxi Service Alexander Hotel Bldg

B

- 1349 B C Cafe Lem Shu Prop King Blk 2nd Ave S
- 727 B C Fruit Market Lindley & Reid Props Donnan Blk
- 546 Baalim A G res 705 4th Ave S

- 1621 BAALIM MOTOR CO LIMITED 409 3rd Ave S

- 1840 Baker Drury res 703 6th Ave S
- 536 Bakos S res 1406 3rd Ave S
- 513 Balderson E res 613 8th Ave S

- 573 BALL & CAMERON Law Office Stafford Blk 311 1/2 5th St S

- 1309 W S Ball res 916 7th Ave S
- 1372 Baltekos Jas res 638 7th St S

BANKS

- 446 Bank of Montreal G E Harmon Mgr 522 3rd Av S
- 1526 Manager's Office
- 1711 Bank of Nova Scotia W D King Mgr 3rd Ave S
- 345 Can Bank of Commerce R T Brynmner Mg 5th St S
- 310 Manager's Office
- 532 Merchants Bank of Can R J Dinning Mgr 3 Av S
- 667 Manager's Office
- 614 Molsons Bank K D Johnson Mgr 518 3rd Ave S
- 526 Royal Bank of Canada W A Parker Mgr 3rd Ave S
- 1414 Standard Bank of Canada G F Bletcher Mgr 4th Ave S
- 1478 Standard Bank of Canada North End Branch J C Scott Mgr 218 13th St N
- 383 Union Bank of Canada F W Nicholson Mgr 5th St S

- 1146 Banks J C res 519 6th St S
- 1835 Barclay Mrs J B res 312 18th St N
- 1011 Barclay Wm res 1311 9th Ave S
- 563 Barnes W B res 904 7th St-A S
- 1267 Barnsley A res 3 Strathcona Court
- 1350 Barr James res 1406 7th Ave S
- 1147 Barrowman Robert res 612 10th St S
- 311 Bartle R res 624 9th St S
- 1466 Bartlett A E res 6th Ave & 30th St
- 795 Bartlett A H res cor 10th Ave and 33rd St
- 1293 Barton P W res 1208 7th Ave S
- 1121 Baskerville J J res 1211 5th Ave A-S
- 1743 Bass John C res 1214 6 Ave A, S
- 603 Bateman James res 203 5th Ave S
- 1395 Bateman Mrs Sarah res 1010 2nd Ave S
- 1291 Batsford Sydney T 5 Higinbotham Blk
- 1158 Bawden Miss A A res 1255 4th Ave S

- 625 BAWDEN BROS Furniture Hull Blk
- 510 Bawden J W res 542 7th St S
- 1135 Beasley A M res Windsor Hotel

W. J. NELSON & CO.

BOOTS AND SHOES FOR ALL AGES

Write or Phone Requirements

Phone 1335

Sherlock Block, LETHBRIDGE

PHONE

755 J. B. TURNEY & CO., Ltd.

Supplies for Builders and Contractors

1245 2nd Ave. South, Lethbridge

- 1755 Beatty J H res 41 Dominion Blk
 1780 Beaumont Jos res 425 12th St N
 1385 Becker H N res 639 14th St S
 1384 **BECKER & YATES** Lumber and Builders' Supplies 3rd Ave & 16th St S
 1914 Beeman Mrs N T res 516 12th St S
 1480 Bell Arthur res 1248 8th Ave S
 1161 Bell Irwin T res 622 14th St S
 1489 Bennett Mrs E res 323 11th St S
 1296 Bennett Wm res 534 6th St S
 401 Bentley H res 613 13th St S
 1803 Berte John res 707 9th Ave N
 1757 Bertrand B res 542 5th St S
 1750 **BIJOU MOTORS** H E Renkenburg Mgr 428 5th St S
 1872 Bing Wo Groceries 320 13th St N
 1047 Binning H G res 113 16th St N
 1758 Bird John C res 318 15th St S
 774 Bishop A 1024 12th Ave-A S
 1795 Bissett James res 308 6th Ave-A S
 1563 Bitzer A res 806 7th St S
 1133 Black Miss J res 636 12th St S
 1084 **BLACKBURN A J & CO** Real Estate, Loans & Insurance 2 Acadia Blk
 572 Bletcher Mrs Gerald F res 1703 7th Ave S
 1012 Board of Trade office Galt Square
 1351 Bonamico A res 120 11th St S
 1053 Bonnell L F Livery 4th Ave S
 672 Bonnell L F res 222 5th Ave S
 1917 Boorman J res 614 7th St S
 1098 Boulton Jas W res 523 6th St S
 1206 **BOULTON'S AUTO LIVERY & TAXI** Mgr J W Boulton 320 5th St S
 1325 Bowman Agency The C B office Acadia Blk
 303 Bowman C B res 324 13th St S
 1297 Boyd C R res 224 13th St N
 1410 Boyd H res 544 12th St S
 1014 Boyden W res 425 13th St S
 1015 Bradbeer Mrs Geo res 631 9th St S
 1875 Bradbeer Mrs J A res 26 Bryan Blk 5th St S
 1271 Bricker Dr J S res 1317 4th Ave S
 1885 Brigham W P res 705 6th Ave S
 1843 British-Can Trust Co G W Robinson Mgr Conybeare Block
 710 Brodie Jno res 648 11th St S
 696 Brooks Jos res 714 10th St S
 1208 Brown T D Farm Machinery 2nd Ave S
 1668 Brown W res 1926 6th Ave-A N
 1115 Bruchet G A res 210 10th St S
 1545 **BRUNSWICK PHONOGRAPHS** Assiniboia Music Co Ltd Agts 315 6th St S
 1548 Bryans F res 1210 3rd Ave-A S
 1922 Bryans Dr W E res 646 12th St S
 1695 Brymner R T Mgr Bank of Com res 652 11th St S
 508 Buchanan W A res 1404 4th Ave S
 1638 Buchanan Rev Wm res 5 Strathcona Court 4th Ave
 1789 Bullock C G res 320 7th St S
 756 Bunce W J res 636 14th St S
 680 Burgess Mrs R res 423 11st St S
 1429 Burgmann R res 502 19th St N
 1805 Burkitt J C res 531 8th St S

TAXI

AUTOS AND TAXIS AT ALL HOURS

PHONE 387 United Taxi Service

- 1439 Burnett Major W B res 622 6th Ave S
 412 **BURNSP & CO LTD** Meat Market 3rd Av S
 1388 Office and Wholesale Department
 1654 Dominion Market Hill Blk
 431 Palace Market 13th St N
 402 Burns Rev W F res 1210 4th Ave S
 531 Burritt G H res 1255 5th Ave-A S

C

- 1850 Cameron L Milliner & Corsetiere 604 3rd Ave S
 629 Cameron Miss M res 1517 13th Ave A S
 1358 Campbell Dr P M res 528 8th St S
 1229 Campbell R J res 816 7th Ave S
 1506 Campbell Dr W D Dentist 7 Shepherd Blk 5th St S

CAMPBELL WILSON & HORNE LTD 3rd Ave S

- 321 Sales Department
 324 Accounting Department
 351 Shipping Department
 1413 Manager's Residence 1307 4th Ave S

- 345 Canadian Bank of Commerce 5th St S
 310 Manager's Office R T Brymner Mgr

580 CANADIAN CONSOLIDATED RUBBER COMPANY LIMITED

- A Parks Manager 326 6th St S

- 1020 Manager's Residence

- 1465 Canadian Hide & Metal Co 202 2nd Ave

CANADIAN PACIFIC RAILWAY

- 512 Ticket Office J Gordon Agent Depot
 512 Information re Trains Depot
 354 Freight Office F E Reagh Agent 13th St N
 354 Information re Freight 13th St N
 1154 Cashier Freight Office 13th St N
 347 Shed Foreman Freight Office 13th St N
 671 Telegraph Office F Kenny Mgr 407 5th St S
 314 Yardmaster 1st Ave S
 642 Superintendent C D Mackintosh
 Chief Clerk M E Collins
 1067 Trainmaster W H Gordon Depot
 1067 Accountant E Gibbons Depot
 1067 Division Master Mechanic W T Wortman Depot
 1067 Roadmaster's Depot
 724 Round House C A Little Locomotive Foreman
 741 Baggage Room
 1137 Stores Dept Yards

C P R NATURAL RESOURCES DEPT

- 524 Galt Mines Office 7th St S
 1136 Irrigation Branch S G Porter Supt Operation & Maintenance
 1275 Colliery Office No 3 Mine Staffordville
 1166 Colliery Office No 6 Mine 13th St N
 346 C P R Stockyards

- 701 Canadian Patriotic Fund P. O. Bldg 4th Ave
 1510 Canadian Western Nat'l Gas Light Heat & Power Co office 620 7th St S

- 1652 Carlyle D P res 518 14th St S
 1678 Carroll G E res 412 9th St S
 403 Carson E M res 1233 5th Ave S
 511 Carter William res 1618 3rd Ave N
 1679 Cathro F res 512 6th Ave S
 768 Cemulini E res 409 3rd St S

- 1023 **CENTRAL GARAGE** (Cook & Dowling Props) cor 3rd St & 4th Ave S

- 309 Central Vulcanizing & Tire Service Station rear Dallas Hotel

- 435 Chapman Mrs A res 820 6th Ave S
 1327 Chapman Harry res 417 2nd St S
 1617 Chappell Stanley L res 938 8th St S

- 1443 Chinook Club 1121 4th Ave S
 1572 Chinook Coal Co Ltd Mine Office Commerce
 1114 Office 118 Sherlock Bldg
 1568 Choquette A C 810 2nd Ave S
 1002 Church H W res 264 7th Ave-A S
 362 Citizens Lumber Co Ltd Yard & Sales Office 13th St S
 A Harron Local Manager
 334 General Manager D Hage 203 Sherlock Blk
 1181 City Bakery R W Scott Prop Higinbotham Blk
 1734 City Boot & Repair Shop 408 2nd Ave S

- 438 **CITY CARTAGE CO** Van Horne Bros 406 5th St S

- 632 City Harness Shop D D McNabb Mgr 408 5th St S

CITY OF LETHBRIDGE

- 1284 Mayor's Office W D L Hardie 332 7th St S
 541 Comr of Public Works 332 7th St S
 645 Commissioner of Public Utilities M Freeman 332 7th St S
 1310 Assessor & Bldg Inspector 332 7th St S
 1588 Car Barns 5th St S
 774 Cemetery Gordon Watt S Alexander Addition
 1331 Children's Shelter 3rd St S
 1355 City Clerk and City Solicitor 332 7th St S
 1404 Electric Trouble Dept (night only) 615 15th St S
 333 Fire Station No 1 (for fire only) City Hall
 1445 Fire Station No 2 13th St N
 1775 Fire Alarm Staffordville 119 13th St N
 1765 Fire Alarm Staffordville 35 Church St
 430 Isolation Hospital 12th Ave S
 1702 Park Supt res Henderson Park
 1145 Police Station City Hall
 1257 Power Station River Bottom
 726 Stables & Weigh Scales 407 3rd St S
 1283 Stores Dept Power Bldg
 381 Street Supt (W H Morris) res 622 10th St S
 553 Treasurer 332 7th St S
 1614 Waterworks Trouble Dept (night only) Sid Russell res

1428 CITY SECOND HAND STORE

- E Cemulini & Co 406 5th St S
 E Cemulini res 409 3rd St S

- 686 **CITY SIGN WORKS** R Barrowman Mgr 415 5th St S

- 1557 Clapham Wm res 642 7th St S
 1151 Clark Mrs M res 313 5th Ave S
 729 Clarke H G res 422 13th St S
 1447 Clarke L W res 621 10th St S

- 453 **CLARKE & CO** Dry Goods Millinery and Ready-to-Wear 614 3rd Ave S

- 529 Cleary Wm res 420 7th St S
 648 Clemis D res 1318 6th Ave S
 1611 Club Cafe 5th St S

- 414 Coaldale Hotel E H Stubbs Mgr 5th St S

- 1756 Coolin J V res 719 6th St S
 1492 Cockerill Mrs Ed res 335 19th St N

- 1215 Cockle H res 214 5th Ave S
 659 Cockshutt Plow Co Ltd 1262 1st Ave S

- 1269 Cocq W A R res 1224 3rd Ave S
 1890 Coffay Mrs C res 1007 8th Ave S

- 1688 Collector of Customs Post Office Blk
 598 Collings Miss H M res 10 Hull Blk

- 719 Collins M E res 636 10th St S

- 1102 Colpman F res 804 4th Ave S
 1514 Commercial Cafe Hyt Bros Props 208 5th St S

- 736 Commercial Club C Hoffman 6 Alberta Blk 5th St S
 1886 Conn D res 538 7th St S
 1613 Connaught Mansions F W Downer Prop 10th St S

- 319 Connor McNally & Leech Physicians 107-109 Sherlock Bldg

- 1090 Dr A McNally res 1266 6th Ave S
 1007 Dr G W Leech res 630 11th St S
 619 Dr E L Connor res 275 7th Ave S
 765 Conservatory of Music 11th St & 5th Ave S
 1580 Constantinescu V res 945 9th St S

1919 CONSUMERS' HARDWARE & SUPPLY CO 116-118 5th St S

- 1920 Office

1884 CONTINENTAL OIL COMPANY LIMITED

- Shepard Blk 2nd Ave & 18th St S

- 509 Convent St Aloysius 116 9th St S

711 CONYBEARE CHURCH Mc-ARTHUR & DAVIDSON Barristers

- 315 5th St S
 1201 C F P Conybeare res Riverview
 1002 H W Church res 264 7th Ave-A S

- 308 Conzet H H res 1206 5th Ave-A S

- 519 Cook Chas W res 311 7th Ave S

- 1078 Cook E H res 608 6th Ave S

- 1583 Cook James res 913 9th St S

- 1699 Cook Miss L res 401 Sherlock Bldg

- 1913 Cook W S res 609 10th St S

- 1814 Coombs Leo M res 416 12th St-A S

- 618 Cope G C res 1206 6th Ave S

- 492 Coultry R Alberta Meat Market 342 18th St N

- 493 Coultry R res 342 18th St N

COURT HOUSE

- 628 Barristers' Room cor 6th St & 4th Ave S

- 656 District Court

- 608 Judge's Private Room—Judge Jackson

- 1328 Sheriff's Public Office—M Young

- 1273 Sheriff's Private Office

- 418 Supreme Court

- 433 Craddock E res 306 3rd Ave S

- 1203 Cragg Dr C C Phys and Surg res 620 5th Ave S

- 404 Cragg Rev Chas E res 320 11th St S

- 408 Cragg Rev Chas E Wesley Church 4th Av & 11th St S

- 1542 Craig J W res 1256 4th Ave N

- 678 Craig John res 624 8th St S

- 1594 Craig John W res 506 14th St S

- 357 Craig Dr W P Dentist res 616 10th St S

- 1719 Crawford H W res 433 12th St S

- 1382 Crawford R A res 625 14th St S

- 574 Crawford W res 1234 5th Ave-A S

- 1778 Crest C S res 716 11th St S

- 592 Crest S res 1116 5th Ave S

- 1168 **CRIPPS GEO H** Expert Piano Tuner 1253 6th Ave-A S

- 674 Crowther Joseph res 297 7th Ave-A S

- 1576 Crystal Dairy Ltd Milk Cream & Ice Cream 531 13th St S

- 1577 Office 531 13th St S

- 1117 Cull Mrs Margaret res 607 6th St S

- 1598 Cull P res 1313 6th Ave S

- 624 Cunningham Howard J res 408 12th St-A S

- 502 Curtis Rev O L res 612 7th St S

Phone 1471 Studio—906 Third Ave. S.

A. EVLYN SMITH

ARTIST IN PORTRAITURE

Out-Door Portraiture a Specialty LETHBRIDGE
 Enlargements in Oils and Watercolors ALBERTA
 APPOINTMENTS MADE

USE THE HANDY LIST OF PHONE NUMBERS
 IN FRONT OF DIRECTORY

PHONE 755 **BUILDERS' SUPPLIES**

J. B. Turney & Co., Ltd.
 1245 2nd Ave South,
 Lethbridge Alta.

D

- 1666 D The Tailor Jas B Du Guerre 410 5th St S
 459 Dafoe Rev F W res 1208 3rd Ave S
 1312 Dallas Hotel Co Ltd George O Rowe Prop 312 5th St S
 1103 Dalrymple James res 715 3rd St S
 1798 Davidson J A res 1262 6th Ave A S
 1104 Davidson Joseph res 965 11th St S
 1866 Davidson R H res 320 6th Ave-A S
 1723 Davies J I res 632 10th St S
 1547 Davies T L res 1218 5th Ave-A S
 1339 Davis Albert M res 511 7th Ave S
 1419 Davis Miss E M res 317 Sherlock Blk
 1505 Davis Frank res 317 7th Ave S
 1856 Dawson E H res 1245 5th Ave S
 1377 Dawson James res 921 9th St S
 797 Dawson Wm H res 1111 6th Ave S
 1056 Day C J res 611 6th St S
 786 Deere John Plow Co Ltd Implements 2nd Ave S
 1167 Deglow W F res 920 10th St S
 452 **DELANY'S MEAT CO** A Scott Mgr
 311 5th St S
 1075 Delay O res No 6 Shaft Hardieville
 1893 De Long W H res 542 12th St S
 402 Denoon Rev A H res Knox Manse 1210 4th Ave S
 505 DeVeber Campbell Roy Cragg & Bryans Drs Royal
 Bank Bldg
 1358 Dr P M Campbell res 528 8th St S
 609 Dr L A Roy res 1 Strathcona Court
 1203 Dr C C Cragg res 620 5th Ave S
 1922 Dr W E Bryans res 646 12th St S
 405 DeVeber Dr L G res 532 8th St S
 365 Devine Capt Chas H (Active Service) res 1213 5th
 Ave S
 1096 Devine Mrs M E res 318 6th Ave-A S
 1185 De Wolfe J H res 1020 7th Ave
 1289 Dicks J E res 1208 5th Ave S
 1386 Diggs Jessie res 113 7th St S
 483 Dimitrio Thos res 1257 6th Ave S
 1878 Dinkel George W res 638 13th St S
 1263 Dinning R J res 1229 5th Ave S
 1058 Dixon Geo R res 812 6th Ave S
 793 Dixon J C res 701 5th Ave S
 1057 **DIXON SHEET METAL CO THE**
 Rear Stafford Blk 5th St S
 388 Dobson R H res 512 14th St S
 1706 Docker W H res 1312 6th Ave S
 1810 Dodd W A Tailor 242 13th St N
 1556 **DODGE BROS MOTOR CARS**
 Motor Sales Ltd Agts 406 4th Ave S
 434 Dominion Express Office C P R Station
 1417 Dominion Land Office New Post Office Bldg
 1654 Dominion Meat Market office Hill Blk
 361 Donald David res 627 9th St S
 758 Donald Miss E res 514 14th St S
 758 Donald Robert res 514 14th St S
 1630 Donald Mrs Wm res 1312 4th Ave N
 1150 Donaldson R B Groceries 801 9th Ave S
 1441 Dooley E V res 533 7th St S
 1570 Dosse L F res 1203 6th Ave S
 1508 Doughty C F res 633 9th St S

A. WYMAN & CO.

HIDES, PELTS, WOOL and FURS

SEE INSIDE BACK COVER

Telephone 442 320 SIXTH ST. SOUTH
LETHBRIDGE, ALTA.**INFORMATION**

TELEPHONE 9

TROUBLE

TELEPHONE 8

RURAL

TELEPHONE 2

- 1880 Dow John res 631 13th St S
 606 Downer F W res 1276 3rd Ave S
 636 Downer F W Prop Victoria Mansions office 1278 3rd
 Ave S
 1760 Dowsley A M res 9 Victoria Mansions
 1809 Dowsley Land Agency Coaldale Blk 309 5th St S
 1430 Drinkall Mrs W H res 102 2nd Ave S
 744 Drysdale James res 533 6th St S
 1004 Duff Mrs J res 750 7th Ave S
 1671 Duffy W A res 611 7th St S
 1474 Dun R G & Co Mercantile Agency 4 Dominion Bldg
 366 Dunham S S Barrister etc Stafford Blk
 707 Dunham S S res 314 12th St S
 1906 Dunsworth M res 611 9th St S
 1482 Dutton W res 701 9th Ave S
 1421 Dygerts Sale Barn 3rd St bet 5th & 6th Ave S

E

- 747 Eastman James res A Hull Blk 3rd Ave
 1411 Easton John res 943 9th St S
 1035 Economy Grocery W G Warnack Mgr 902 11th St S
 436 Edgett Orrin B res 1700 9th Ave S
 1545 **EDISON PHONOGRAPHS** Assiniboia
 Music Co Ltd Agts 315 6th St S
 1304 Edwards A res 1318 6th Ave-A N
 1318 Elite Cigar Store 320 5th St S
 466 Elite Tailors & Cleaners The 710 3rd Ave S
 583 Elling Rev H J res 710 16th St N
 679 Elliott John res 313 6th Ave-A S
 552 **ELLISON MILLING & ELEVATOR
 CO LTD** Mills 2nd Ave S
 Manager's office
 1068 Elton David H Law Office Stafford Blk
 1523 Elton David H res 1209 7th Ave S
 490 Elton David H res 1209 7th Ave S
 338 Emery William Painter & Decorator 936 9th St S
 1408 Emmerson Margaret res 314 15th St N
 1502 Emms K res 802 7th St S
 1868 English E J res 1270 6th Ave S
 1322 Erickson G res 904 8th St S
 1190 Evans Mrs T M res 326 12th St S
 439 Everall Ernest E res 650 9th St S
 1107 **EVERALL & FRANKS** Paper Rulers
 Bookbinders Printers Sinnott Blk
 410 Printing Plant 2nd Ave S
 443 Ewert E A Jeweler McDonald Blk 304 5th St S
 601 Ewert E A res 1411 6th Ave S
 385 Experimental Farm W H Fairfield Supt Coaldale Rd

F

- 1125 Fairbairn W B res 721 6th St S
 1838 Fairfield A R res 422 12th St-C N
 385 Fairfield W H res Experimental Farm
 589 Fairfield W S res 525 8th St S
 1423 Fairley R H res 508 13th St S
 777 **FARM PRODUCTS LTD** Hay & Potatoes
 218 Sherlock Bldg
 365 W J Lloyd Mgr's res 1213 5th Ave S
 522 Geo Porter Accountant res
 455 Farmers' Fire & Hail Ins Co 2 Alberta Blk
 516 Farmers Lumber Co 3rd Ave & 17th St S
 1031 Farris R C res 283 7th Ave S
 1616 Farris R C Service Agency McDonald Blk 3rd Ave S
 1196 Farrow C S res 305 7th Ave S
 623 Farrow H D res 322 6th Ave-A S
 1046 Fat's Quick Lunch Restaurant 5th St S
 305 Federal Coals Ltd office Hill Blk
 585 Mine
 1635 Feinstein H res 324 7th Ave S
 1065 Felger's Dairy 6th Ave-A S
 359 Fendley F W res 615 11th St S

- 1683 Ferguson D res 291 7th Ave S
 561 **FETTERLY T S** Undertaker 334 6th St S
 1176 Fetterly T S res 284 7th Ave S
 1791 Fiddes James res 621 14th St S
 1491 Fife J M res 502 14th St S
 1650 Filmer A N res 14th Ave & 15th St S
 604 Finn M F res 702 9th Ave S
 1904 Finnemore N res 309 7th Ave S
 333 **FIRE DEPARTMENT** (Fire Only)
 1531 Fisher A M res 1217 6th Ave S
 1746 Fisher E B V res 639 8th St S
 1359 Fisk Mrs James res 422 9th St S
 1623 Fitzpatrick M P res 307 7th Ave S
 1128 Fleet F W res 419 14th St S
 390 Fleetwood John H res 522 7th St S
 390 Fleetwood Miss M G res 522 7th St S
 1895 Fleetwood T H res 501 14th St S
 576 Fleming Geo E res 4 Strathcona Court
 633 **FORD GARAGE** H E Miebach Prop 1232
 3rd Ave S
 1793 Forster E R J res 626 10th St S
 379 Forster P W L J res
 471 Fowler Mrs L H res 34 Dominion Blk 4th Ave S
 1336 Fowler Richard Y res 910 2nd Ave S
 785 Fox Dr T W Dentist Union Bank Bldg
 752 Fox Dr T W res 534 14th St S
 1003 **FRACHE BROS** Florists Henderson Park
 1586 Francis C S res 314 15th St S
 448 Fraser Irving res 1006 2nd Ave S
 611 Frayne A res 70 Dominion Blk
 1106 Fredrickson Geo res 1238 7th Ave S
 621 Freel James res 321 6th Ave-A S
 1713 Freel & Elliott Sheet Metal Works 330 6th St S
 1490 Freeman M res 1266 4th Ave S
 1551 Furman C E res 534 5th St S

G

- 1299 Gaddes G M res 285 7th Ave S
 1524 Gagnebin P Jeweler 5th St S
 587 Gagnebin P res 1421 5th Ave N
 725 Gain R J res 946 7th St-A S
 302 Galbraith F res 321 15th St S
 1253 Galbraith Dr W S office & res 914 3rd Ave S
 1184 Gallivan M V res 1119 3rd Ave S
 343 Galt Hospital General Office 5th Ave S
 1344 Gant G K res 319 6th Ave A S
 1315 **GARBUTT BUSINESS COLLEGE**
 411 8th St S
 1566 Gear A G res 970 10th St S
 1644 Geiger J C res 131 20th St N
 1642 Gibbons E res 903 9th Ave S
 1191 Gibbons R V Co Real Estate & Insurance Balmoral Blk
 1071 Gibson Dr M J Dentist Rooms 5, 6 & 7 Bryan Blk
 1896 Gibson Dr M J res 1256 4th Ave S
 1080 Gillespie Mrs Alice res 627 11th St S
 406 Gillies W H res 238 15th St N
 1449 Gillilan W M res 1222 3rd Ave S
 378 **GILMORE JOHN LIMITED** Manfrs
 of QUAKER BREAD 1606-1612 2nd Ave-A N
 1027 Gilmore John res 1702 2nd Ave N
 1141 Glayzer J res 316 6th Ave A, S
 384 Glover Hugh res 803 7th Ave S
 1915 Gobbelle J E res 131 15th St N
 1925 Godfrey H C res 2nd Ave Hardieville
 1670 Gogan J J res 1708 7th Ave N
 525 **GOOD COMPANY LIMITED THE**
 Groceries 329 5th St S
 458 North Branch 240 13th St N
 550 N B Good res 626 8th St S
 751 S B Good res 524 12th St S

- 1749 Goodall C F res 617 14th St S
 1486 Goodman J A res 528 12th St-C N
 1898 Goodman M res 316 7th St S
 1059 Gordon W H Trainmaster near Round House
 1230 Graham H C res 648 9th St S
 1822 **GRAHAM MOTOR CO LTD** E Ains-
 worth Mgr 414 6th St S
 1237 Graham Mrs Rosalie res Brodie Blk 4th Ave
 482 Graham W res 1231 6th Ave S
 1626 Grant Mrs C res 1509 6th Ave S
 429 Graves J G res 414 3rd St S
 1881 Gray J B res 1516 4th Ave N
 581 Gray R M res 1101 2nd Ave S
 890 Gray Robert res 711 12th Ave S
 1006 Gray W S res 1106 7th Ave S
 1493 Green Geo W res 1016 2nd Ave S
 692 Green J H F res 633 12th St S
 1595 Green Leonard O res 233 14th St N
 1255 Green V E Mgr Imperial Oil Co res 422 8th St S
 620 Greenfield's Exchange Ltd Dominion Blk 6th St S
 1127 Grey Miss F G res 7 Whitney Blk
 1025 Grier Miss Kathleen res 319 7th Ave S
 1562 Grigg A M res 1213 6th Ave S
 743 Groff C G res 410 12th St A, S
 1725 Guilbault E C office 2nd Ave & 13th St S
 1041 Guilbault E C 1234 7th Ave S
 1140 **GUTTA PERCHA & RUBBER,
 LIMITED** 606 Dominion Blk 4th Ave S
 between 6th and 7th Sts
 1728 K N Jones Manager res 611 10th St S
 441 G B Weller res 948 13th St S

H

- 1051 Hage David res 627 10th St S
 1582 Hagell E res 714 11th St S
 1028 Haight H res 509 14th St S
 1774 Haines L A res 632 6th St S
 783 Hall A res 6 Hull Blk
 1832 Hall Mrs E res 1707 2nd Ave N
 1463 Hallworth Henry res 1223 5th Ave-A S
 693 Hamilton E R res 1245 5th Ave-A S
 705 Hamilton J F res 307 7th Ave-A S
 494 Hamilton J K 522 4th St S
 1833 Hamilton W L res 301 7th Ave S
 1148 Hanna J O res 4th Ave & 13th St S
 376 Hanrahan J C res 639 12th St S
 1369 Hansen M K res 1701 2nd Ave N
 1394 Hansen P res 615 16th St S
 318 Happy Farmer Tractor Co The P Shendel Mgr
 416 4th Ave S
 1008 Hardie W D L res 1242 5th Ave-A S
 596 Hardy Wm Fire Chief res No 1 Fire Hall
 1360 Hardy Wm res 1265 3rd Ave S
 1870 Harman G H res 1233 4th Ave S
 765 Harper J G & Co Musical Instrument Dealers 5th Ave
 & 11th St S
 1306 Harper J George res 1205 6th Ave S
 1578 Harris C F Barrister etc Suites A & B Balmoral Blk
 1794 Harris Chas C res 524 8th St S
 1017 **HARRIS D E** Real Estate Broker Acadia Blk
 1620 Harris D E res 605 11th St S

TAXI

AUTOS AND TAXIS AT ALL HOURS

PHONE 387 United Taxi Service

PHONE

755 BRICK**COMMON and FANCY
 CARLOAD LOTS****J. B. Turney & Co., Ltd.**
 1245 2nd Ave. South
 Lethbridge Alta.