

KING GEORGE HOTEL TAXI SERVICE

DOMINION TAXI SERVICE

M3362

TAXI

M7777

24
- MOTOR LIVERY CO.
MCLAUGHLIN CARS



PALLISER
HOTEL
AUTO & TAXI CO.
ROBERT WARE, PROP.

OFFICIAL
**TELEPHONE
DIRECTORY**

SEPTEMBER, 1923

CALGARY

AND DISTRICT

(FOR POINTS IN OTHER DISTRICTS CALL "LONG DISTANCE". See Pages 9 to 12)

CALGARY **EMERGENCY CALLS** CALGARY

Fire, M1197; Police, M6681

CALLS FOR TELEPHONE SERVICE
Information, 92; Trouble, 93; Rural, 94
Long Distance 0

DESTROY ALL OLD DIRECTORIES

TAXI

M3333
M3335

TAXI
M1582
M3990

M2476

"The Independent"



GET ME A
MESSENGER BOY
QUICK!

M2476

"The Independent"

CALGARY

Northern Electric Company
LIMITED

EDMONTON

The No. R-2001

2 Stage Radio Frequency Receiving Set

By the use of radio frequency amplification the incoming signals are greatly amplified before detected thereby increasing the weak signals so that the detector tube will operate much more efficiently.

This method of amplification is far superior to audio-frequency amplification since the presence of signal distortion and tube noises are entirely overcome.

For range and selectivity this set has no equal.

CONSISTS OF

- 1 No. R2 Short-wave Tuner, 2 Stage Radio Frequency Amplifier, and Detector Unit.
- 1 No. R5A Audio Frequency Amplifier Unit.
- 1 No. R6B Double Head Set, 2500 ohms.
- 1 No. R650 Aerial System*4, No. R215A Peanut valves.
- 1 No. R1461 Filament Battery.
- 1 No. R90 45 volt Plate Battery.

Descriptive Bulletin No. 1003 and Price List furnished on request.

—DISTRIBUTORS—

W. W. GRANT RADIO LTD., Calgary

Jaffe's Book and Record Exchange

We Buy and Sell

Books, Records and Musical Instruments

Lending Library in Connection

If It's Books You Want, We Have Them!

Records Exchanged for 10c Each

We Carry a Full Stock of MUSICAL SUPPLIES

M5797

323A 8th Ave. East

PHONE
M 2299

ST. REGIS HOTEL TAXI

H. G. SAHLIN

ST. REGIS HOTEL

124 7th AVE. W., CALGARY

CALGARY ADDENDA

Alterations and Additions Received Since Going to Press—Too Late for Classification

- H 1141** Abercrombie Wm res 1409 2nd St NW
M 2251 Adams J D & Co Rd Gradg Mach Centre & 12 Av
L 1754 Adams Thos R res 711 4-A St NW
M 2378 Ader Lawrence res 5 Colgrove Apts
M 3635 Advance Furniture Exchg M Kurtzberg 313 S Av E
M 7926 Alta Hudson & Essex Motor Sales Co 15 Av & 1 St E
M 1441 Alberta Wood Preserving Co Ltd 1910 9th Ave W
L 1469 Aldous Miss Evelyn res 1747 2nd Ave NW
H 2477 Allison Alec res 1601 Centre-A St NE
W 2579 Ancell Arthur res 1611 15th Ave W
E 5576 Anderson A E res 1517 8th Ave E
H 1545 Anderson M V res 220 21st Ave NW
M 9313 Anderson V res 6 Louise Apts
M 2147 Anderson Walter H res 639 2nd Ave W
M 5947 Andrews Wm res 4 King Apts
M 2693 Annable W D Shoe Store 111 8th Ave E
M 5219 Anstring Thorsten S res 412 3rd Ave W
E 5558 Arbuckle Mrs A res 1334 11th Ave E
W 4839 Arnold H res 2142 15th St W
M 9104 Atkinson G E res 130 12th Ave E
M 6977 Attree Miss Gladys Dance Studio 8 Ave & 3 St W
M 5926 Austin A J res 207 Morgan Blk
W 4435 Austin R E res 114 Devenish Apts
W 2151 Ballantyne J L res 1929 11th St W
E 5901 Barker Charles res 2115 8th Ave E
H 2459 Barnes L E res 3917 Centre St N
L 2273 Barraclough Jos res 619 9 1/2 St NW
M 2777 Barron & Barron Bar & Slrs Thomson Blk 1128 Av E
M 7513 Bater M R Electric Home Repairs 41 Union Bk Bldg
E 5595 Bealing Frank res 819 23rd Ave E
M 5354 Benson & Hedges (Canada) Ltd 204 Trvrs Bldg
M 2154 Berg K res Old C N R Depot
H 2156 Berry L S res 238 5th Ave NE
L 1955 Best R res 2029 4th Ave NW
M 5604 Best's Garage 111 6th Ave E
- BETHEL SANITARIUM** Bowness Pk
(See Rural 3506—Call 94)
- M 5869** Binnie D res 4 Dwight Blk
M 7776 Birrell Robert res 610 17th Ave E
W 1822 Bishop R E res 826 14th Ave W
M 9834 Black C W Tailor 437 Lougheed Bldg
H 2442 Blackstock A D res 433 15th Ave NE
H 1352 Blake E L res 131 14th Ave NW
M 2549 Blears T res 415 3rd Ave NE
M 9613 Blyth Mrs A res 410 1st St E
H 2481 Booth George res 128 22nd Ave NE
L 2352 Bowden R S res 0907 1st Ave NW
M 1836 Boy Scouts Assoc of Alberta 15 Cameron Blk
L 2045 Bradley R res 231 10-A St NW
M 1374 Bray C F res 1811 Centre St SW
M 5411 Brill J res 916 2nd Ave NE
M 6784 Britton Mrs L E res 502 Underwood Blk
W 2864 Brock Miss M M res 2 Acadia Apts
M 5147 Brooks A J res 502 14th Ave E
M 2193 Brotherton Electric Co 304 8th Ave E
L 1241 Brown Mrs A res 9 Florence Apts
H 2052 Brown A J res 233 4th Ave NE
W 1369 Brown A L res 1610 30th Ave W
M 2939 Brown W Austin Barrister & Solr 715 Centre St
H 1341 Bruce C D res 134 7th Ave NW
M 3856 Bruce Major T C res 3-203 14th Ave E
H 1324 Buggins Mrs D res 708 5th St NE
M 6297 Bull Miss A E res 307 Beveridge Bldg
E 5349 Bunker J res 1927 8th Ave E
M 1634 Bunning R S res 506 5th Ave W
W 2264 Burgess Samuel res 1815 17-A St W
W 1409 Caldwell Robert res 1 Mount Royal Blk
M 1472 Calgary Baggage Service 313 10th Ave E
- M 5331** Calgary Produce Co 1004 2nd St E
M 4019 Cameron Miss Clara A res 6 Wallace Apts
W 2272 Campbell Jas O res 1113 12th St W
W 4110 Campbell Mrs John H res 1621 14th Ave W
M 3919 Campbell R res 721 3rd Ave W
M 2519 Campbell T W res 314 3rd Ave W
M 5091 Cantwell Mrs Bertha res 302 Alta Loan Bldg
M 4941 Capitol Cake Shop & Delicatessen 1213 1st St W
M 3954 Carnegie C res 206 15th Ave E
M 5073 Carr Miss Olive B res 2-929 4th Ave W
M 2891 Caswell J E res 2118 4th St W
E 5447 Carter Halls Aldinger Co W Can Flr Mills E Calg
W 2467 Cartwright H D res 820 18th Ave W
M 1808 Central Jewellers 408 L & L Blk
M 4986 Central Store Dry Goods A L Willson 702 Centre St
M 3247 Chisholm Wm res 209 Morgan Blk
H 2154 Choate C A res 834 8th Ave NW
M 2163 Chong Kwong Sing res 509 7th Ave W
M 6203 Christie John Brit Govt Surplus Supplies 302 S Av E
M 3328 Chung Lung Co Market Gdnrs 1122 2nd Ave SE
M 5016 Civic Government Association 510 L & L Blk
H 2037 Clarke A E res 1407 Centre-A St NE
M 6847 Clarke Herbert F res 226 5th Ave W
M 9374 Clowes H res 527 11th Ave E
H 1678 Coaker C res 301 26th Ave NE
W 2368 Cobb A J res 2104 35th Ave SW
M 6594 Cole Wm res 314 15th Ave E
M 5897 Conway Miss D res 527 6th Ave E
M 1343 Cook Dr R M Phys & Surg 101 P Burns Bldg
M 4568 Cooke Thomas D res 1416 Centre St S
E 5035 Cooper Chas res 900 9th Ave E
M 7813 Cooper R N res 1-216 6th Ave W
M 6366 Cording Harry 525 11th Ave E
M 5617 Corkum C J res 510 1st St W
M 9258 Cosgrove L res 526 Centre Ave W
M 5638 Cosie's Radiator Shop C E Cosgrove 115 11th Av W
M 5356 Cosway Geo R res 3-216 6th Ave W
H 1030 Coverdale A res 409 20th Ave NW
M 4231 Cox Mrs H res 116 4th Ave E
M 1274 Cox Jas res 3612 1st St W
L 1243 Cozzubbo Marino res 228 11th St NW
H 2469 Craig J res 216 25th Ave NE
H 2424 Cran John D res 1812 1st St NE
L 2074 Craven C C res 218 15th St NW
M 2990 Crescent Garage 208 9th Ave W
W 1592 Crippin W res 1210 13th Ave W
W 4094 Crisall F D res 10 Huntly Apts
M 2958 Crist Miss Cigar Store Yale Hotel
W 1408 Croll R M res 1007 14th Ave W
M 1772 Cromie George res 310 20th Ave W
M 5703 Cross Mrs M V res 2 Aberdeen Apts
M 4304 Culverwell Mrs E res 114 6th Ave W
M 2796 Cummins P H res 21 Lorraine Apts
H 1706 Currier Ernest res 231 3rd Ave NE
M 4476 Curry Chas res 2512 1st St SE
M 2981 Curtis Neville C res 3 Creso Apts
L 1192 Custead Mrs F res 1536 8th Ave NW
M 6917 Cutmore Arthur res 432 17th Ave E
M 3943 Dallas R J res 528 22nd Ave W
W 1894 Dann F C res 1107 15th Ave W
M 9002 Darroch D res 309 6th Ave E
M 3762 Davidson J res 1008 3rd St E
H 1636 Davidson W res 621 19th Ave NW
M 9143 Davies A res 6 Avonlea Apts
E 5409 Davis V Jasper res 1324 8th Ave E
L 2142 Dawson W E res 425 13th St NW
M 3190 Day H T res 324 12th Ave E
M 9050 Deal Mrs B E res 4720 Macleod Trail
M 4987 De Boeck Pete res 116 15th Ave E

Calgary Addenda

- M 1385** De Man Alice res 1 Avonlea Apts
W 4217 Dennis R S res 1 Acadia Apts
M 4993 Dept of S.C.R. Medical Officer & Matron's Office
M 4998 Pathologist 532 8th Ave W
W 1999 Devitt T G res 1507 5th St W
E 5973 Didora W T res 2211 16th St E
M 6235 Dinnigan A W res 1220 4th St E
E 5578 Dirrane M res Cement Wks Boarding House E Calg
M 5321 Dixon Miss A res 316 Underwood Blk
M 4429 Dixon Dr Ivan Phys & Surg Thomson Blk
W 2431 Downing Sidney res 920 16th Ave W
M 4771 Draper T res 34 Hotel Royal
M 2107 Draper T B res 206 2nd St W
M 4010 Dunham & Tod Ltd Ins Brokers 310 P Burns Bldg
M 5813 Dunlop J R res 6 College Apts
M 5408 Dunnigan J A res 8 King Apts
M 1872 Durham George res 4 Marwood Apts 25th Ave SE
M 5910 Durie James res 419 David Blk
W 1133 Dymock W A res 5 Sills Apts
M 3846 East End Grocery M C Burton 533 7th Ave E
L 1653 Eastham Charles Stanley 811-9-A St NW
M 3518 Elderkin C J res 337a 17th Ave W
M 3743 Elliott Chas res 309 Underwood Blk
M 9668 Epstein H L res 826 6th Ave W
M 6311 Evers Wm H res 539 11th Ave E
M 1928 Fanning K res 130 4th Ave E
M 4756 Fazackerly John res 503 Alta Loan Bldg
W 1774 Ferguson A F res 1805 18th St W
M 7401 Ferguson James res 2207 2nd St W
M 7357 Fielding Mrs J res 1403 2nd St W
M 4743 Forbes J res 429 12th Ave E
W 4918 Forbes James res 1109 15th St W
H 1235 Foster A D Dry Goods Store 139 16th Ave NW
L 1513 Foster W W res 462 12th St NW
W 1758 Fowler R L res 816 20th Ave W
W 2441 Francis H W res 1415 7th St W
M 3102 Fundas Wm Confectionery 619 Centre St
M 3949 Gadsden A L res 2421 2nd St E
M 1324 Gardner Mrs B res 810 6th Ave W
M 4179 Gardner N F res 2 H & R Apts
W 4470 Gardner W D res 4 Devenish Apts
L 1134 Garn Robert res 727 3rd Ave NW
L 2151 Garnes Jas A res 2330 7th Ave NW
W 1306 Gauthier Ray res 1207 11th St W
M 4054 Gavin W J res 2 Radio Blk
M 1003 Gemmill J G res Yale Apts
W 4215 Gibson J Glen res 1114 15th Ave W
L 2230 Gibson Russell W res 818 10th St NW
M 3070 Gier & Grasswick Garage 319 6th Ave E
W 1470 Gilfoy S W res 319 Scarboro Ave
M 2708 Gill Miss S res 525 2nd Ave W
L 2379 Girling E T res 924 5th St NW
M 4783 Gloss Polish Co The 127 8th Ave E
E 5036 Glover H T res 2514 16th St E
M 1208 Goad Ray J res 619 14th Ave E
M 5118 Godwin Cyril res 215 38th Ave W
M 4194 Goldberg Mrs L res 516 14th Ave E
M 1846 Golden West Brewery Co Ltd Nose Creek
W 4716 Goldman L res 1311 12th St W
W 4554 Goodison T A res 1819 32nd Ave W
L 2309 Gordley L res 0902 1st Ave NW
H 1013 Goulden W H res 411 19th Ave NW
M 2377 Goulding C E res 233 15th Ave W
W 1380 Graham John E res 1815 7th St W
H 1985 Graham Samuel res 216 26th Ave NE
L 1148 Graham William res 1407 1st Ave NW
M 3537 Grain Belt Constr'n & Dev'l'm't Co 318 P Burns Bg
M 4079 Grainge John res 330 3rd Ave W
M 2479 Grantham B res 207 17th Ave E
L 1258 Gray Thos W res 1709 2nd Ave SW
H 2252 Green T res 333 2nd Ave NE
W 4116 Gregory E J res 1720 9-A St W
M 9230 Grenier J A res 1718 1st St E
H 1492 Grierson Robert res 120 17th Ave NE
M 1280 Gross Wm res 128 18th Ave E
E 5819 Groves C G res 1445 15th St E
W 2861 Gurley R N res 512 15th Ave W

M 3378 Gutta Percha & Rubber Ltd 605 11th Ave W
M 5854 W R Wayman Manager
M 5854 Sales Dept
M 6560 Shoe Orders
M 6744 Tires & Mechanical Goods
M 7477 Accounting & Credit Department Hugh Scott
M 2165 Guttman Joseph A res 115 14th Ave E
M 9966 Haag Clarence Garage 319 6th Ave E
M 2953 Hall J W res 6 Radio Blk
M 7519 Hamilton Mrs I res 433 12th Ave E
M 6762 Hamilton R res 2 Afton Apts
M 3637 **HAMMILL MOTORS** Oldsmobile Dlrs
 324 5th Ave W
L 2037 Hammond E T res 207 12th St NW
M 3203 **HAMMOND FLORAL CO LTD**
 1st St W cor 9th Ave
W 1388 Hankins R E res 1826 15th St W
M 7093 Hanrahan Lester res 16 Thomson Blk
M 6206 Haptov A res 825 1st Ave NE
M 1749 Hards J W res 1020 8th Ave W
E 5065 Harper Geo S res 2519 16-A St E
M 2593 Harper S res 320 15th Ave W
M 4368 Harris A E res 214 39th Ave W
M 4396 Hart A B res 234 2nd Ave W
M 5967 Haskins Joseph J res 518 14th Ave E
M 7529 Haskins & Co Sed Hand Dlrs 425 8th Ave E
M 5220 Haslam Lemuel res 313 18th Ave W
L 1551 Haslett H R res 1448 Hillhurst Blvd
M 7699 Haverstock Geo K res 3208 7-A St W
W 1055 Hay William E res 1827 18th St W
M 4818 Hayden Miss M res 1 Hester Apts
W 2311 Hayhurst T res 2616 27th St W
W 4575 Hazelton E res 917 13th Ave W
E 5820 Henderson A res 2519 17th St E
L 2018 Henderson C J res 407 13th St NW
M 3185 Henderson G W res 4th Floor I O O F Temple
M 5054 Henderson Miss M res 8 Lorraine Apts
M 2498 Hennigar Dr A E Dentist 1011 Herald Bldg
M 5026 Herold Guy res 37 Central Bldg
E 5449 Hewitt Miss Sadie res 1807 Ramsay St
M 1611 Hibberd N G res 201 Alta Loan Bldg
W 2576 Hickman W B res 1515 19th Ave W
M 2463 Hillard Ethel res 2-117 15th Ave E
W 1423 Hodges Miss P B res 1619 14th Ave W
W 1632 Hoffman F M res 1518 12th Ave W
W 4702 Holman H L res 2033 11th Ave W
W 2403 Holmwood G C res 1604 11th St W
M 5759 Home Delicacies Ltd T Loutit 135 8th Ave W
E 5705 Hopper G res 2516 16th St E
H 1002 Howell Wm L res 127 10th Ave NW
E 5413 Hunt Nicholas res 923 9th Ave E
L 1460 Hutchinson E res 730 1st Ave NW
M 2097 Ilott B Plumber 518 1st Ave W
M 7597 Ilott W A Jr res 108 City Hall Corner
W 4212 Ingle Albert E res 1501 16th Ave W
M 3406 Ingram C res 2419 2nd St E
W 4951 Irwin A W res 9 Mount Royal Apts
M 5322 Jackson H B res 20 Hotel Royal
M 6552 Jacques H A res 3007 4th St W
E 5709 Jefferis Jack res 917 17th Ave E
M 7697 Jenson R W res 5 Avonlea Apts
M 3258 Jessee F F res 110 15th Ave W
W 4270 Joffe J res 1803 9th St W
L 2279 Johnson F M res 229 11th St NW
H 1278 Johnson R F res 322 28th Ave NE
H 1660 Johnston George res 608 16th Ave NW
W 1081 Johnston H C res 2609 15-A St W
M 9821 Johnstone A M res 528 18th Ave W
M 1359 Jones E res 1402 5th St E
M 3897 Jones E B res 521 10th Ave W
L 1935 Jones George res 807 5th Ave NW
W 2353 Jottreau Mrs A res 1813 14-A St W
E 5435 Kaforry A N G res 1141 8th St E
H 1096 Kaiser N H res 612 19th Ave NW
M 5634 Kelly Miss Katherine res 2 Connaught Apts
M 5112 Kennedy Mrs R C res 734 3rd Ave W
L 2143 Kennell F W res 108 16th St NW

Calgary Addenda

- L 1582** Kerr D E res 723 4 1/2 St NW
H 2174 Kerr G W res 1-102 Crescent Rd
E 5909 Kerr W C res 1622 24th Ave E
W 2143 Kerry A A res 815 19th Ave W
M 1799 Kilborn W T res 13 King Apts
M 2150 Kilpatrick W E res 31 Lorraine Apts
M 3167 Kinsey A H res 537 12th Ave W
M 2822 Kirkpatrick Gertrude res 9 Marlborough Apts
H 1293 Klokeid J res 916 16th Ave NW
L 2327 Knight F res 937 4th St NW
M 4397 Kompf L J res 3012 5th St W
W 4949 L C Products 1601 10th Ave W
H 1805 Laing Geo M res 235 22nd Ave NW
M 9708 Lalonde J I res 114 5th Ave E
W 2083 Lambourne G T res 1744 34-A Ave W
H 2173 Lang Wm res 133 27th Ave NW
L 1182 Large F P res 2840 Parkdale Blvd
L 1868 Latham Mrs C res 2028 2nd Ave NW
H 1612 Latham R H res 614 12th Ave NE
L 1361 Lawson W J res 838 3rd Ave NW
E 5284 Leeming J res 1710 26th Ave E
M 1897 Lees Thomas res 618 23rd Ave W
W 4538 Leinbach J B res 2142 16th St W
M 4912 Leonard Mrs Edith Keagle res 323 24th Ave W
M 2202 Leone Joseph & Co Ltd Whol Mill'ry 21 Elma Blk
E 5232 Leppard P H res 1130 8th St E
W 2220 Lignite Ltd Coal Co cor 10th Ave & 10th St W
W 4314 Lochhead W F res 1026 17th Ave W
W 2631 Lodge J E res 1119 13th Ave W
L 1910 Lord Mrs M res 1136a Centre Ave NW
H 1391 Lorton Wm res 1219 20th Ave NW
M 1352 Luey Hon res 235 6th Ave E
M 9848 Lundy R A res 302 38th Ave W
M 6456 Lytle George res 18 Caledonian Blk
M 1620 Mac's Confectionery 902 8th Ave W
W 1849 Macdonald Miss G M res 3 Sandringham Apts
W 1713 MacDonald J res 1540 10th Ave W
W 1291 MacFarlane T J res 1717 27th Ave SW
M 6763 Macgregor Studio 118 8th Ave W
M 1789 Machon Mrs Geo res 221 6th Ave W
M 4932 MacIntosh Mrs Hugh res 6 Marlborough Apts
H 1981 Mackay John A res 326 5th Ave NE
W 2927 MacKay W R res 1024 13th Ave W
M 7690 Mackenzie Bruce res 3 Louise Apts
M 9253 MacKenzie C D res 1 Howard Apts
W 4876 MacKenzie D A res 1227 13th Ave W
M 3228 MacKenzie D A res 107 Judge Travis Bldg
M 6391 Maclean Blk Rental Office 310 Maclean Blk
M 4564 MacLean Miss Margaret res 10 Albion Blk
M 4002 Macleod Murdo Painting Contractor 401 13 Ave E
W 1770 Malkin C res 1213 13th Ave W
M 5898 Malm A G Real Estate 130 9th Ave W
W 1794 Mann G H res 1811 30th Ave SW
M 5139 Manning Miss S J res 309 11th Ave W
M 5465 **MAPLE LEAF AUTO LIVERY**
 Empire Hotel
M 6406 Marathon Rooms Mrs M A Johnson 228 13th Av W
M 7687 Marik N res 528 8th Ave E
M 3436 Marsh's Cake Doughnuts 312 7th Ave E
E 5477 Marshall F E res 2515 17th St E
M 2930 Martyn Webster Electric Co 12th Ave & 1st St W
W 2108 Mastell F R res 1527 15th Ave W
M 3348 Matson N res 312 13th Ave E
W 1903 Mattock S H res 1616 29th Ave SW
W 2813 Maturin D C P res 1326 15th Ave W
M 2536 McArdle I W res 206 34th Ave SE
M 4126 McCaffrey J J res 608 22nd Ave W
E 5767 McConnell J res 1016 20th Ave E
M 7186 McCrumm W T res 2-133 15th Ave E
L 2188 McDonald Jake res 618 9th Ave NW
E 5313 McDonald Wm res 1207 8th Ave E
H 2345 McDowall George res 333 2nd Ave NE
M 4976 McEwen J A res 824 5th Ave W
M 1734 McFarlane W T res 3021 4th St W
W 2520 McGavin C res 926 17th Ave W
M 5603 McGaw's Produce 1314 Centre St
W 4835 McGill Dr H W res 1525 32nd Ave SW
M 5068 McGregor C F res 1207 5th St E
L 1368 McGuire Mrs George res 340 14th St NW
M 1604 McIntosh J W res 414 11th St NE
W 2474 McIntyre L G res 4 Bryant Apts
M 7350 McKay Robt S res 912 Riverdale Ave
M 1837 McKenzie C G res 227 15th Ave W
M 6869 McKenzie P J res 309 13th Ave E
W 4580 McKernan Alfred G res 1027 14th Ave W
W 4243 McLaren J R res 1735 13th Ave W
W 1727 McLean E G res 1820 12th Ave W
M 4951 McLeod D A res 514 23rd Ave W
M 1376 McLeod Wm E Broker 211 Alberta Corner
M 7142 McMicken S D res 8 Hatfield Court
M 9085 McNeill J H res 3918 3rd St W Elbow Park
L 1851 McPherson H res 827 5th Ave NW
W 1587 McQueen John res 1531 16th Ave W
H 2332 McVeigh F A res 737 19th Ave NW
M 9328 McWilliams Miss E res 1 Francis Apts
M 4249 Melody Shop 320 7th Ave W
W 2948 Merrifield H D res 1111 12th St W
W 4311 Merritt W res 1601 15th Ave W
M 3649 Middleton H E res 816 38th Ave W
M 4201 Millar Henry Irwin res 3901 5th St W
M 1865 Millard Arthur M res 1 Georgian Court
W 2234 Milroy W res 3212 14th St SW
M 3231 Minnion S M res 215 Mission Rd
M 1420 Mitchell G H res 305 13th Ave E
H 1169 Mitchell W J res 440 14th Ave NE
M 5945 Mooney P J res 212 Morgan Blk
M 6327 Moore Nora E res 4 Western Blk
H 2160 Morgan Henrietta res 333 12th Ave NW
M 6227 Morris David S Mfrs Agent 5-405a 8th Ave W
M 1649 Morris Fred res 413 Underwood Blk
H 1306 Morris N J res 629 12th Ave NE
M 5728 Morrison H G res 3433 7th St W
M 9011 Morrison P R res 415 Beveridge Bldg
H 1429 Morrison W G res 115 17th Ave NE
M 1710 Mueller Rev Aug J res 110 6th St SE
H 1764 Murdoch G C res 208 6th Ave NE
M 1635 Murdoch J D res 535 12th Ave E
W 4986 National Produce Co. Whol Fruit & Pro 528 17 Av W
M 7538 New Calgary Market Janitor 7th Ave W
M 1658 Nicholson Sub-Insp J J res 1135 6th Ave W
M 4908 Nightingale Mrs J 507 11th Ave W
H 1743 Nisbet M A res 338 5th Ave NE
L 1223 O'Brien A res 416 12th St NW
M 9479 Ogden L M res 211 Judge Travis Bldg
L 1263 Oliver Chas A res 1122 Centre Ave Hillhurst
M 3914 Oliver S E res 511 10th St W
H 1421 Olson Magnus res 525 10th Ave NE
M 2699 Olson O res 105 15th Ave W
W 2145 O'Neill J L res 1 Brigden Blk
M 3561 Osterhout H L res 5 Saunders Apts
M 7143 Pace Miss res 8 Eastern Blk
M 6877 Palmer Dr A M Dentist 200 P Burns Bldg
M 5129 Palmer F res 732 1st Ave W
M 5809 Palmer Mrs Gail E Strang res 623 6th Ave W
W 4324 Parks A res 2209 26th St W
W 2699 Parry William Henry res 1111 15th Ave W
H 1337 Parsons Mrs Rose res 112 17th Ave NW
L 1865 Pattison W A res 909 4th Ave NW
M 7698 Peacock Ira T res C Connaught Apts
W 2911 Pearce H J res 632 17th Ave W
M 1724 Pengelly Mrs res 314 7th Ave E
H 1361 Pepperdine J res 724 20th Ave NW
M 9306 Peterson C res 539 21st Ave W
H 1629 Pike A res 933 32nd Ave NW
M 4896 Poffenroth John C Barr & Solr 3 Wright Blk
L 2439 Pollock J M res 804 9 1/2 St NW
M 9302 Poole D res 1005 4th Ave W
W 2237 Porter C F res 1220 13th Ave W
H 2337 Potter P S res 239 18th Ave NE
M 3631 Pound Wm res 212 25th Ave W
W 2889 Prairie Lumber Co Ltd cor 10th Ave & 11th St W
W 2973 Prather B res 50th Ave & 22nd St W
M 7352 Priestley Robt J res 211 25th Ave W
M 1829 Prime Mrs A res 911 0th Ave W

Calgary Addenda

- M 1414** Prosser A E Butcher 1209 1st St W
M 2209 Prov Govt Neglected Children's Dept Old Cr't Hse
H 2306 Pryde H res 316 9th Ave NE
H 1792 Quinton H J res 201 16th Ave NW
E 5511 Randall Gee & Mitchell Elevator 'Z' E Calgary
M 5255 Randall Thos H Barr & Solr 4 Cameron Blk
M 5357 Randall Thos H res 217 15th Ave E
H 1303 Rankin A E res 812 4½ St NE
M 6986 Rau Bennie res 433 8-A St NE
W 4443 Rawlings W P res 1 Sills Apts cor 6 St & 14 Ave W
M 2002 Realty Bureau 112 9th Ave E
M 6483 Redgrove A R res 407 Beveridge Bldg
W 1223 Reed P R res 1725 13th Ave W
M 7636 Reid R W B res 11 Colgrove Apts
W 4145 Reis Charles W res 1716 12th Ave W
W 2186 Rennie James res 1811 18-A St W
M 3889 Retail Credit Bureau
M 1520 Richard H R res 335 24th Ave W
M 1643 Richards Mrs S res 202a 4th St W
L 1372 Rickson G res 928 Blvd NW
H 1904 Riddock John res 1515 Centre-A St NE
M 7523 Robertson Mrs Laura res 1 Radio Blk
M 5075 Robertson's (D G) Cash Grocery 45 Western Mkt
L 2070 Rockhill C res 116 16th St NW
M 2251 Roe S H Local Agt I H C cor Centre St & 12 Ave.
M 5645 Rogers D F res 327 22nd Ave W
W 2050 Rose T S res 1741 34th Ave SW
W 4641 Ross H J res 4 Sandringham Apts
M 1356 Rowe J H res 305 2nd St W
L 2127 Russell H W res 120 16th St NW
M 3934 Sanders R J res 514 17th Ave E
H 1544 Sangster John res 102 Crescent Rd NW
W 4083 Sawyer E W res 2414 35th St SW
W 4762 Scarboro Ave Methodist Church Rev A D Richard
 103 Scarboro Ave
M 7042 Scatcherd T res 221 15th Ave E
L 1721 Schofield F H res 440 14th St NW
M 4894 Schroeder G res 127 12th Ave E
L 1573 Scollen C res 212 11th St NW
M 6543 Scott Clyde res 215 Young Blk
M 2716 Scott Leslie A res 411b Underwood Blk
L 1980 Scrivens Thos res 1644 2nd Ave SW
M 2868 Self Serving Grocery 1205 1st St W
 Senimens Dr A W Bethel Sanitarium Bowness Park
 (See Rural 3506—Call 94)
H 1881 Shackelford A W res 327 13th Ave NW
W 1395 Shand Mrs A E English Nursing Home 1226 15 Av W
M 1842 Shannon S res 421 14th Ave E
H 1442 Sharpe H res 1317 1st St NE
H 1056 Shaw Mrs M res 6 Kinne Blk
M 3183 Shepard J res 409 L & L Blk
W 2698 Shepherd H C res 2520 16-B St SW
M 5403 Sherman W A res 613 14th Ave E
M 1476 Shipley Miss D res 110 9th St NE
M 1975 Shumiatcher A I res 316 23rd Ave W
M 9681 Silver Max res 414 13th Ave E
M 2982 Silverthorn A res 221 25th Ave W
M 9914 Skelly J B res 612 23rd Ave W
H 1694 Skene George res 222 4th Ave NE
M 5026 Sleen Oscar res 8 Arnold Blk 328a 8th Ave W
M 9810 Slipper S E Petroleum Engineer 321-322 P Burns Bldg
M 5401 Smalley L res 511 5th Ave W
M 6754 Smith Andrews Ltd 230 8th Ave E
W 4194 Smith Mrs C T res 1218 12th Ave W
H 1218 Smith Edgar res 246 23rd Ave NW
W 1008 Smith H E res 1821 16-A St W
M 1878 Smith Miss Jessie res 220 6th Ave E
M 1748 Smith M C res 528 8th Ave W
W 4185 South Side Livery 534 17th Ave W
M 2848 Spankie Dr A T Eye Ear Nose & Throat 103 P Burns Bg
M 3384 Speare Mrs C res 2327 1-A St E
M 1494 Springbank Municipal Dist No 221 45 Lineham Blk
W 2368 Stanhope A J res 2031 36th Ave SW
M 6343 Staples L res 414 Beveridge Blk
M 2812 Sterling R M res 811 6th Ave W
W 1289 Stewart Robert res 2510 16-A St W
W 2650 Storey Miss A M res 1229 13th Ave W
W 1017 Sturgeon E W res 1806 12th Ave W
W 1985 Sullivan R B res 1525 15th Ave W
W 4629 Summerby W L res 1617 13th Ave W
M 9652 Sutherland N M res 3908 6th St W
H 1059 Swamberg O res 613 10th Ave NE
M 1883 Sweet Home Confectionery G Alex 347 17th Ave W
M 7856 Symons Arthur res 2409 Centre St SW
W 4522 Talbot W E res 1722 11th St W
E 5476 Taylor A res 3610 14-A St E
M 3994 Taylor Dr H G Physician 201 P Burns Bldg
M 4097 **TAYLOR JOHN E & SONS** Real Est
 Insurance, Financial Agts 40 Elma Blk
L 1789 Thistle Mrs Annie res 1607 23rd Ave NW
M 5185 Thom W R res 2 Lorraine Apts
L 2141 Thomas E res 450 13th St NW
H 1725 Thomas M res 2011 2nd St NW
M 1048 Thompson A J res 533 21st Ave W
M 4197 Thompson A O res 28 Thomas Blk
W 4149 Thompson C F res 1933 26-A St W
M 9343 Todoruk William res 2409 2-A St SE
H 1628 Toone William res 440 14th Ave NE
M 2815 Totten Frank res 913 5th Ave W
M 1783 Truscott H J res 3208 7-A St W
W 2194 Turner W G res 1616 10th Ave W
H 2031 Tyler H J res 310 2nd Ave NE
M 7487 Underhill George H res 340 14th Ave E
M 3321 Utopia Cafe Joe Y Yicking 804a 2nd St E
M 9840 Vance R T res 736 2nd Ave W
M 5048 Venables A M res 1 Wellington Apts
W 1443 Vickerson Wm L res 1026 16th Ave W
H 2203 Wainwright J C res 723 4½ St NE
W 2472 Waldron M H res 2118 15th St SW
H 2180 Waldron Miss Ruth res 1613 2nd St NW
M 7642 Walker L S res 1134 6th Ave W
M 2661 Wallace Mrs G res 110 11th Ave W
H 1414 Walter Miss O res 1812 3rd St NW
L 1248 Waltham C A res 311 10½ St NW
M 7303 War Veterans Auto Livery 104 9th Ave W
W 2985 Ward C res 4019 17th St SW
M 3702 Wares J D res 318 22nd Ave W
W 4090 Watson Percy res 1604 13th Ave W
L 1860 Watts W J res 2114 7th Ave NW
M 3719 Wells Mrs A res 427a 8th Ave E
E 5257 Western Industrial Development Co Ltd 1004 9 Av E
M 5638 **WESTERN RADIATOR & M'FG**
CO 115 11th Ave W
M 2340 Wheat Pool office 226 Lougheed Bldg
W 1367 Wheatley M B res 1729 College Lane
H 1354 White Albert res 137 11th Ave NE
H 1886 White G W res 926 31st Ave NW
M 3323 White Mrs M E Beauty Parlor 17 Alberta Block
M 5058 White Mrs M E res 113 5th Ave W
W 1441 Whyte J D res 838 13th Ave W
M 5829 Wilkinson & Markle Garage 123 15th Ave W
W 2170 Williams C C res 1623 15th Ave W
M 4177 Williams Miss J res 5 Hatfield Court
M 5038 Williams L T res 208 14th Ave E
M 1622 Williams Mrs Marie res 1508 5th St E
W 4994 Wilmot B E W res 1035 21st Ave W
W 1343 Wilson Coal & Coke Ltd 10th Ave & 10th St W
M 4032 Wilson Ted res 2005 2nd St W
M 7865 Wilson Mrs W res 226 3rd Ave E
M 4733 Windsor J res 331 13th Ave E
M 6122 Windsor J M res 1 Argyle Court
W 2238 Wodell R H res 1626 15th Ave W
M 4189 Wood Teddy Tailoring J Caledonian Blk
L 2341 Woodbridge P P res 1326 16th St NW
H 1202 Worrall E L res 419 18th Ave NW
M 1479 Yama A res 427 14th Ave E
W 2419 Yardley Mrs E res 1708 27th Ave SW
H 2228 Yeomans E H res 412 12th Ave NE
M 2965 Young Rev I W res 524 22nd Ave W
E 5554 Young Jas res 712 23rd Ave E
M 5299 Young M H res 1718 1st St E
M 9748 Ziglin Mrs B Fruit & Veg 13 City Hall Mkt
M 2143 Zorn E G res 6 Colgrove Apts

ALBERTA GOVERNMENT TELEPHONES

Schedule of Rates for Service

(Exclusive of Private Branch Exchange Equipment)

INSTALLATION CHARGES

A service connection charge covering a portion of the average cost of the initial expense of establishing service for new subscribers and of furnishing additional facilities to old subscribers shall be as follows:

- (a) For individual or exchange party line service, or extension set..... \$3.50
- (b) For each extension bell..... 2.00
- (c) To cover directory, accounting, circuit and switchboard expenses in cases where service is established by the use of instruments and lines already in place in the subscriber's premises and no change is made in the type or location of such instruments..... 1.50
- (d) To reconnect service when discontinued for non-payment of account..... 1.00
- (e) When it is necessary to erect poles or anchors in order to carry the wires from the main telephone line on the road allowance or street to the applicant's premises, such poles and anchors in connection therewith will be supplied and erected by the Department at the expense of the applicant.

Excess Mileage-Exchange

The excess mileage rate for Exchange Service shall be 50c per month for each quarter-mile or fraction thereof.

MOVING CHARGES

- (1) From one position to another in same room\$1.00 per instrument
- (2) From one room to another on same floor, or from one floor to another in same building, no outside wiring being required.....\$2.00 per instrument
- (3) From one building to another\$3.50 per instrument
- (4) Where a telephone is already installed and no inside move is required, a charge of \$1.50 will be made to cover cost of transferring the wires in central office and changing number on switchboard.
- (5) Where the above rates do not apply, an estimate of cost will be furnished subscriber on request, previous to work being proceeded with.

NOTE:—Above charges cover installations and moves for Exchange Subscribers only—charges for Rural installations and moves may be ascertained on application to our Local Agents.

MONTHLY RENTAL RATES

	Business		Residence		Rural Wall
	Wall	Desk	Wall	Desk	
Day Service.....	\$2.25	\$2.50	\$1.50	\$1.75	\$1.75
Semi-Continuous Service.....	2.75	3.00	1.75	2.00	2.00
Continuous Service—Exchanges under 150 stations.....	3.00	3.25	2.00	2.25	2.00
Continuous Service—Exchanges between 150 and 500 stations.....	3.25	3.50	2.00	2.25	2.00
Continuous Service—Exchanges between 500 and 1,000 stations.....	3.75	4.00	2.25	2.50	2.25
Continuous Service—Exchanges between 1,000 and 5,000 stations.....	4.00	4.25	2.50	2.75	2.50
Continuous Service—Exchanges between 5,000 and 10,000 stations.....	4.50	4.75	2.50	2.75	2.50
Continuous Service—Exchanges between 10,000 and 15,000 stations.....	5.00	5.25	2.50	2.75	2.50

EXTENSION SETS AND EXTENSION BELLS (EXCHANGE)

Business Wall.....	\$1.00 per month	Residence Wall.....	50c per month
Business Desk.....	1.25 per month	Residence Desk.....	75c per month
Extension Bell.....			25c per month
Loud Ringing Extension Bell.....			50c per month

ALBERTA GOVERNMENT
TELEPHONES

OFFICIAL
TELEPHONE DIRECTORY

Head Office:

C. P. R. BUILDING, EDMONTON

HON. VERNOR W. SMITH,
Minister of Railways and Telephones.

JOHN CALLAGHAN,
Deputy Minister of Railways
and Telephones.

R. B. BAXTER,
General Superintendent,
Edmonton.

Copy for this Edition closed May 15th, 1923

This Directory is the property of the Alberta Government, and is printed for the exclusive use of their patrons, and they assume no liability whatever for damages occurring from errors or omissions in the making up and printing of this book.

Department of Railways and Telephones

TERMS and CONDITIONS

Under Which Telephone Service is Furnished

USE OF TELEPHONE

1. Telephone instruments and connecting lines are furnished to subscribers to be used in accordance with the rules as prescribed by the Department from time to time, and are to be used only by the subscriber, his agents or employees when engaged upon his business and must not be used for transmitting, receiving or delivering any message or communication in respect of which a consideration has been or is to be paid by any other party, except as permitted by the rules of the Department, nor used in any way in competition with the telephone business conducted by the Department. Subscribers will not be allowed to transfer their telephone number, service, or contract to any other party, unless arranged for in advance by a duly authorized official of the Department.

The right of the subscriber is to use the instruments and connecting lines where the Department may place them, but not elsewhere, under such rules as the Department may from time to time prescribe. He shall not extend their use to other individuals, except his servants upon his business; nor shall they be used for any calls or consideration to be paid by any person other than the subscriber; nor does this confer upon him the right to use any other instrument.

2. The lines and instruments over which the service is furnished remain the property of the Government and shall be carefully used by the subscriber, and only as herein stated in Clause No. 1; and no instrument or appliance not furnished by the Department shall be attached to or used in connection with these lines and instruments.

CONSTRUCTION

3. When it is necessary to erect poles or anchors in order to carry the wires from the main telephone line on the road allowance or street to the applicant's premises, such poles and anchors in connection therewith will be supplied and erected by the Department at the expense of the applicant.

CHARGES—HOW PAID

4. All charges for installations, moves, and monthly rentals shall be paid in advance, which shall entitle the subscriber to service with all subscribers connected to the same exchange. Regular toll rates will be charged for all service to points outside of the exchange.

5. Subscribers shall pay the installation charges, first rental instalment (and construction charges if any) strictly in advance. Excess mileage charge will be added if outside of exchange limits. If subsequent rental accounts remain unpaid after the 20th of the month, service shall be discontinued and if still remaining unpaid after the end of the month, a charge of \$1.00 shall be made to reconnect service; no rebate or reduction shall be allowed for such interruption to service.

6. Subscribers shall pay monthly, at schedule rates, for all messages and conversations over the Long Distance lines. If said accounts remain unpaid after the 20th of the month, further credit shall be refused until account is paid.

7. Subscribers shall pay promptly, upon presentation of account, all charges for other miscellaneous items. If these charges are not paid within 20 days, service shall be discontinued.

COMPLAINTS RE LONG DISTANCE SERVICE

8. No allowance will be made on complaint of inefficient Long Distance service unless such complaint be made to Chief Operator, immediately after conversation has taken place.

VACATION ALLOWANCE

9. Should a subscriber desire to have his Exchange Residence Service temporarily discontinued, owing to the closing of his residence, he may do so without

cancelling contract or having telephone removed, and, if arranged for in advance in writing, an allowance of one-half of the rate per month will be made for a period of not less than one month and not exceeding three months in any one year. Subscriber shall state, when making application, the period for which he expects to be absent and shall pay for this period in advance. Subscriber will notify the Department when he wishes service resumed, either in writing or by calling at the office and signing re-connect order. Owing to the fact that Rural Telephones cannot be disconnected without a special trip being made to their location, this regulation will not apply to Rural Subscribers.

MOVES

10. The telephone is first located where the subscriber directs and must not be moved or interfered with. When the subscriber desires to have the telephone moved to any other location, notice in writing should be given to the local office, at least ten days before the change is desired. The work will then be done as promptly as possible at regular charges.

CANCELLATION OF SERVICE

11. Subscribers giving up service must notify the Department in writing, or call at office and sign "Take Out" order. Failing to do this, subscriber will be liable for rent up to the date instrument is removed or taken over by a new subscriber.

IDENTIFICATION OF EMPLOYES

12. Every employe of the Alberta Government Telephones authorized to instal, inspect, repair or remove the Department's apparatus carries a metal badge showing the name of the Alberta Government Telephones and his own number. Subscribers and others are earnestly requested to refuse access to their premises to anyone who cannot in this way identify himself, and to notify the Local Office at once by telephone.

GENERAL

13. If a telephone installed for service at the residence rate be used for the purposes of business or profession, or otherwise than for the usual requirements of a residence, the Department may charge the business rate for such service without regard to the date to which the subscriber has paid for service at the residence rate. This also applies to subscribers, for residence service only, who advertise or use their telephone number in connection with their business or profession.

14. The Department will endeavor to keep the lines and instruments in good working order and undertakes to clear trouble or make repairs with all reasonable despatch, but does not guarantee uninterrupted service.

15. A subscriber's telephone number is not a part of the application for service, but numbers will only be changed when absolutely necessary or for the betterment of the service.

16. The use of obscene, profane or abusive language while using the telephone is strictly forbidden and service may be immediately discontinued for violation of this rule.

DIRECTORY REGULATIONS

This Directory is the property of the Alberta Government and is loaned to telephone subscribers for their use, to be retained until the delivery of the next issue. Subscribers are furnished free one copy for each instrument. Additional copies will be charged for, \$1.00 per copy.

No insertions, changes or corrections may be made after the date set for the closing of copy.

Each subscriber is entitled to one single line entry in the Alphabetical List without charge. Listings in bold type will be charged at the rate of Two Dollars per issue. By special arrangement any subscriber to Exchange Business Service may have the name of any company which he represents, or of any employe or agent, listed in Directory at a nominal charge of One Dollar per line per issue. A subscriber to Exchange Residence service may have the name of a bona fide member of his family listed in the Directory for One Dollar per line per issue. When it is desired to insert the name of a person not an actual member of the family, the charge will be \$3.00 per issue, which includes Exchange Service.

Each business subscriber is entitled to one single-line entry in the Classified business section without charge. Listings in bold type will be charged at the rate of Two Dollars per issue. All other listings will be charged for in accordance with approved schedule of rates.

Subscribers are requested to report promptly to the Local Office, in writing, any errors which may appear in this Directory, so that same may be corrected in the next issue.

The Alberta Government Telephones assume no liability whatever for damages occurring through errors or omissions in the making up and printing of this Directory.

HOW TO USE THE TELEPHONE

Automatic Telephone

Consult the Telephone Directory for the correct number before you make a call. Do not trust to your memory.

Call 92 for Information if the person or firm you wish to call is not listed in the Directory.

1. **LIFT RECEIVER** off the hook before making a call. Do not work the hook up and down when doing so, as it interferes with the calling mechanism.

2. **BRING THE FINGER** squarely to the finger stop.

3. **REMOVE YOUR FINGER** after each operation and allow the dial to rotate back to its normal position. Do not force or retard this movement.

4. **FACE THE TRANSMITTER** with the lips almost touching the mouthpiece. Speak naturally distinctly and not too rapidly.

5. **DO NOT MOVE RECEIVER HOOK OR DIAL** while talking, as this will disconnect you.

6. **DO NOT LEAVE RECEIVER OFF HOOK DURING THE NIGHT** or your line will be disconnected from service. Call "Trouble Department, Telephone 93" should you desire your service temporarily disconnected during the night.

7. **ALWAYS HANG UP RECEIVER** for a short interval before making a second call to allow the mechanism to release.

8. **HANG RECEIVER ON HOOK** (small end up) when through talking; otherwise no one can obtain connection with your telephone.

9. **BUSY BUZZ** sound indicates that the number called for is busy.

EXAMPLE:—To call M2300. Lift receiver off the hook, place finger in finger hole "M", then turn the dial towards the right until your finger strikes the finger stop. Then release dial and allow it to rotate back to its normal position. Repeat this operation for the figures 2-3-0-0.

Place receiver to your ear. If the busy buzz is heard, it indicates that the number called is busy. This being the case, hang receiver on hook and call again within a reasonable time.

On completion of conversation hang receiver on hook small end up.

You are then entirely disconnected and ready to call another number, or to be called.

Automatic Exchanges

INFORMATION:—Call Information "92" for numbers of New Subscribers, Changes, Long Distance Line Charges, New Toll Offices, etc.

TROUBLE:—Complaints regarding Telephone Troubles should be reported to Trouble Operator, Telephone No. 93. When reporting trouble, give telephone number affected and its location, also state as accurately as possible just how trouble manifests itself. Try to be specific, as incomplete information frequently causes delay in locating nature of trouble.

If a line you are trying to call repeatedly tests "busy" notify Trouble Operator, who will investigate whether same is caused by an abnormal condition on line, or from use. If any line appears too busy for good Service, write to the Commercial Manager. Subscribers are requested not to engage Trouble or Information Operators in conversation longer than necessary, as by so doing the operator will be prevented from giving prompt attention to other patrons.

Manual Telephone

Consult the Telephone Directory for the correct number before you make a call. Do not trust to your memory.

Ask for "Information" if the person or firm you wish to call is not listed in the Directory.

1. **TO CALL THE OPERATOR** give one long ring before removing the receiver from the hook and then hold the receiver to the ear.

2. **WHEN THE OPERATOR REPLIES** by saying "Number?" give the number of the subscriber's telephone desired, slowly and distinctly. At Multi-office Exchanges, first indicate the exchange desired by the prefixed letter and then pronounce the number by digit.

EXAMPLE:—"M1429" should be pronounced "M one-four-two-nine."

At other Exchanges pronounce the number desired by digits.

EXAMPLE:—"175" should be pronounced "One-Seven-Five."

3. **FACE THE TRANSMITTER** with the lips almost touching the mouthpiece. Speak naturally, distinctly, and not too rapidly.

4. **KEEP THE RECEIVER TO THE EAR,** and the Operator, after repeating the number, will

connect you with the subscriber called for. If the desired line is found to be in use the operator will report "Line Busy."

5. **WHEN YOU HAVE FINISHED TALKING** place the receiver on the hook, small end up, and give a short ring. This gives the operator a signal to disconnect and you are then in a position to call another number or to be called.

NOTE:—At Camrose, Red Deer and Wetaskiwin (Common Battery Exchanges) no ringing, except by rural line subscribers, is necessary. Simply remove receiver from hook and in all other respects proceed as instructed above, placing the receiver on the hook when conversation is finished.

6. **DO NOT USE THE TELEPHONE** during a thunderstorm.

7. **RURAL LINE SUBSCRIBERS** should limit their conversation to Five Minutes duration and must not "listen-in" to conversations not intended for them, as it interferes with the Service.

COMPLAINTS:—Complaints regarding telephone trouble and unsatisfactory Service should be made to the Agent or Chief Operator at the Office concerned, and if not rectified within a reasonable time, the matter should be referred to the Traffic Superintendent at Edmonton.

LONG DISTANCE SERVICE

Rules and Regulations

To make a Long Distance Call, first call "Long Distance"—when the Long Distance Operator answers, give her your telephone number, followed by the details of your call, as indicated below.

CLASSIFICATION OF LONG DISTANCE SERVICE

1. STATION TO STATION CALLS

The Station-to-Station rate applies when it is not desired to establish communication between particular persons except that *Appointment, Messenger or Collect Calls* are not accepted in connection with Station-to-Station Service.

Station-to-Station calls must be made by number whenever Telephone Directory information covering the called point is available. When such information is not available, the name or address under which the telephone is listed should be given, specifying that "anyone at that number will do."

EXAMPLE:—"Number 4567 J. H. Brown speaking, I want to speak to No. 684 Springdale" or "I want to speak to Mr. John Jones," residence (or business) as the case may be, "Springdale. Anyone at his number will do."

2. PERSON-TO-PERSON CALLS

(Evening and Night Rates do not apply to Person-to-Person Service.)

When a Long Distance Call is made, specifying that conversation is desired with a particular person and the connection is established and conversation held with that person, the "Person-to-Person" rate applies.

EXAMPLE:—"Number 4567 J. H. Brown speaking, I want to speak to Mr. John Jones No. 684 Springdale," or "If Mr. Jones is not there, I will speak to Mr. A. F. Smith."

NOTE:—*When a particular person is desired, the Long Distance operator must be so advised when the call is placed, otherwise charges will be made from the time connection is established with the telephone desired, whether the party is obtained or not.*

Appointment Calls

An Appointment Call is a Person-to-Person call requiring communication to be established at a specified time, and order should be given to the Long Distance operator in the usual manner.

Messenger Calls

A Messenger Call is a Person-to-Person call, necessitating the services of a Messenger to secure the attendance of a specified person, and order should be given to the Long Distance operator in the usual manner. The Messenger Service charge in such cases must be prepaid by the calling party if the call is placed from a Public Pay Station.

Collect Calls

Collect calls are Person-to-Person Calls, the charges for which are reversed, i.e., to be collected from the called party. In such cases the assent of the called party shall be obtained before the connection is established.

(OVER)

LONG DISTANCE SERVICE

Rules and Regulations—Continued

RATES AND CHARGES FOR LONG DISTANCE SERVICE

Long Distance Tolls will be charged to the subscriber from whose instrument the Long Distance call is placed, except those messages for which the receiving party expressly agrees to pay on the basis of a Person-to-Person Call.

All rates quoted are for an initial period of three minutes. For overtime beyond the initial period a proportionate charge is made per minute.

The rates quoted on pages 9 and 10 are Station-to-Station Day Rates.

The Day rate for a Station-to-Station call is the fundamental rate upon which the rates for other classes of Service are based.

The rate for a completed Person-to-Person call, either Paid or Collect is approximately 25% higher than the corresponding Station-to-Station Day rate.

The rate for a completed Appointment or Messenger Call, including Written Messages and Telegrams, is approximately 50 per cent. higher than the corresponding Station-to-Station day rate.

Day rates only are used in computing charges on Person-to-Person, Appointment and Messenger Calls, including Written Messages and Telegrams.

Day rates only are in effect between points served by the Alberta Government and Saskatchewan Government Telephones.

The Kootenay Telephone Lines Ltd. (B.C.) Day and Night Rates are the same.

Evening and Night Rates

(These rates apply on Station-to-Station Calls only.)

Between 7 p.m. and 12 midnight the Station-to-Station rates are approximately one-half the Day rates and are known as "Evening Rates."

Between 12 midnight and 4.30 a.m. the Station-to-Station rates are approximately one-fourth the Day Rates and are known as "Night Rates."

(NOTE:—In no case shall the Evening or Night rate, as the case may be, be less than 25c for the initial period, unless the Day rate is less, in which case the Day, Evening and Night Rates shall be the same.)

Report Charges

Under certain conditions a Report Charge of approximately one-quarter of the Station-to-Station Day rate will be made on uncompleted Person-to-Person, Appointment and Messenger Calls, including Written Messages and Telegrams.

A Report Charge shall not be made on a Station-to-Station call under any condition.

SLOT MACHINE PAY STATION SERVICE

Slot Machine Telephones have been installed by the Department for the convenience of subscribers and the general public, in suitable locations throughout the Province. Local conversations may be had from these telephones at a charge of 5 cents for 5 minutes. Long Distance Service is furnished at regular tariff rates upon deposit of the amount of the initial charge (covering three minutes conversation) the usual charges being made for excess time.

Non-subscribers who desire to use Subscribers' telephones should be referred to the nearest Public Pay Station.

If there is anything about our rates and practices you do not fully understand, please call our Local Manager or Chief Operator and they will be glad to explain.

LONG DISTANCE RATES

From Calgary

To Places connected with the Long Distance Lines of the Alberta Government
Telephones and Connecting Systems in Alberta.

NOTE:—These Rates are Subject to Change without Notice.

TO	Station- to-Station Day Rate	TO	Station- to-Station Day Rate	TO	Station- to-Station Day Rate	TO	Station- to-Station Day Rate
	\$ c		\$ c		\$ c		\$ c
Abeo.....	1 35	Buffalo.....	.95	Doucette.....	1.50	Heath Creek.....	.55
Ablene.....	1 50	Buffalo Head Ranch.....	.30	Downing.....	1.35	Heaton Moor.....	1.35
Acme.....	.25	Bulwark.....	.85	Drayton Valley.....	1.00	Heisler.....	.85
Adkins.....	.25	Burdett.....	.90	Drumheller.....	.40	Hespero.....	.60
Aldrio.....	.15	Busby.....	1.20	Duchess.....	.60	High River.....	.25
Alberta Beach.....	1 15			Dunstable.....	1.20	Hilda.....	1.10
Alcomdale.....	1.20			Durlingville.....	1.65	Hilliard.....	1.15
Alderson.....	.80			Duverny.....	1.35	Holden.....	1.05
Alequiers.....	.30	Cadogan.....	1.10			Hughenden.....	1.00
Alhambra.....	.60	Cairns.....	1.10	Eastburg.....	1.35	Hussar.....	.40
Alix.....	.65	Calahoo.....	1.15	Echohill.....	1.35	Huxley.....	.45
Afferston.....	1 05	Calling Lake.....	1.80	Eckville.....	.60		
Alliance.....	.85	Calmar.....	.95	Edberg.....	.80	Iddesleigh.....	.75
Alsaak, Sask.....	1.10	Campsie.....	1.35	Edmonton.....	1.10	Innisfail.....	.45
Altario.....	1.10	Camrose.....	.90	Edmonton Beach.....	1.05	Innisfree.....	1.20
Amethyst.....	.50	Canmore.....	.40	Edward.....	1.35	Iola.....	.75
Amisk.....	1.00	Carbon.....	.35	Edwell.....	.50	Irma.....	1.10
Andrew.....	1.35	Cardston.....	.85	Egremont.....	1.35	Iron Springs.....	.65
Angle Lake.....	1.35	Carlton Hill.....	1.35	Elk Point.....	1.50	Irricana.....	.20
Ankerton.....	.85	Carmanagay.....	.50	Elkwater Lake.....	1.20	Irvine.....	1.15
Anthony.....	1.20	Caroline.....	.50	Ellecott.....	1.50	Islay.....	1.35
Arbutus.....	.60	Carolside.....	.65	Elnora.....	.50		
Ardmore.....	1.65	Carstairs.....	.25	Empress.....	1.10	Jarrow.....	1.05
Ardrossan.....	1.10	Carvel.....	1.05	Enchant.....	.60	Jarvie.....	1.50
Armada.....	.45	Cassils.....	.60	Endlang.....	.65	Jenner.....	.80
Ashmont.....	1.50	Castor.....	.75	Entwistle.....	1.10	Judson.....	.85
Athabasca.....	1.65	Catchem.....	1.20	Erixon.....	.55		
Atleo.....	.85	Cavendish.....	1.00	Erskine.....	.65	Kahwin.....	1.35
Avalon.....	1.15	Cayley.....	.30	Etzikom.....	1.05	Kananaskis.....	.30
		Cereal.....	.90	Evansburg.....	1.15	Kapasiwin.....	1.10
Baintree.....	.25	Cossford.....	.70	Everts.....	.55	Kathryn.....	.15
Banff.....	.45	Champion.....	.45	Exeel.....	.95	Kelsey.....	.85
Barons.....	.55	Chancellor.....	.35	Exshaw.....	.30	Kevisville.....	.45
Barrehead.....	1.35	Chappice Lake.....	1.10			Kew.....	.20
Bartlettville.....	1.00	Chauvin.....	1.20	Faith.....	1.10	Killam.....	.95
Bashaw.....	.75	Cherhill.....	1.20	Fallis.....	1.10	Kingman.....	1.00
Bassano.....	.45	Chin.....	.70	Fawcett.....	1.50	Kinnondale.....	.55
Battenburg.....	1.20	Chinook.....	.85	Fedorah.....	1.20	Kinsella.....	1.05
Battle Lake.....	.85	Chipman.....	1.20	Ferintosh.....	.80	Kipperville.....	1.10
Bawlf.....	.85	Clareholm.....	.50	Foremost.....	1.00	Kirk McKinnon.....	.85
Beauvallon.....	1.35	Clarinda.....	1.10	Forestburg.....	.85	Kirriemuir.....	1.05
Beaver Crossing.....	1.80	Clivo.....	.65	Fort Assiniboine.....	1.50	Kitscoty.....	1.35
Beaver Heights.....	.60	Cluny.....	.35	Fort Saskatchewan.....	1.15	Knob Hill.....	.85
Belaker.....	.25	Clyde.....	1.35	Four Nine.....	1.10	Krakow.....	1.20
Bellis.....	1.50	Cochrane.....	.15	Freedom.....	1.35		
Belvedere.....	1.35	Cold Lake.....	1.80			Lacombe.....	.65
Benato.....	.55	Columbine.....	1.65	Gadsby.....	.70	Lac Ste Anne.....	1.15
Bentley.....	.65	Compeer.....	1.10	Gagnon.....	1.65	Lafond.....	1.35
Benton.....	1.00	Comrey.....	1.20	Gahern.....	1.10	Lake Isle.....	1.15
Berrymoor.....	1.00	Comrie.....	1.35	Gainford.....	1.10	Lake Valley.....	.95
Beynon.....	.40	Concor.....	.60	Galahad.....	.85	Lakesend.....	.95
Big Fish Lake.....	1.35	Conrad.....	.85	Garden Plain.....	.70	Lamont.....	1.20
Big Valley.....	.55	Consort.....	.95	Garred.....	1.35	Landonville.....	1.50
Bindloss.....	1.00	Cooking Lake.....	1.05	Gem.....	.55	Lanfine.....	.90
Birdsholm.....	1.05	Coronad Beach.....	1.20	Gibbons.....	1.20	Langdon.....	.15
Blackie.....	.25	Coronation.....	.85	Gleichen.....	.30	Lavoy.....	1.15
Blairmore.....	.65	Countess.....	.65	Glendon.....	1.50	Lawton.....	1.35
Bloomsbury.....	1.35	Coutts.....	1.05	Genevils.....	1.20	Le Goff Jct.....	1.65
Bolan.....	1.35	Cowley.....	.65	Glenwoodville.....	.75	Lea Park.....	1.50
Bon Accord.....	1.20	Cralgmyle.....	.55	Goddard.....	1.00	Leduc.....	.95
Bondiss.....	1.50	Crawford.....	1.80	Gorman.....	1.65	Leedale.....	.70
Bonnyville.....	1.65	Cremona.....	.25	Graminia.....	1.00	Legal.....	1.20
Bordenave.....	1.50	Crossfield.....	.20	Granium.....	.55	Legend.....	.95
Botha.....	.70	Cummings.....	1.20	Grassy Lake.....	.85	Leighton.....	1.50
Bottrel.....	.25	Czar.....	1.05	Green Court.....	1.35	Leo.....	.85
Boundary Creek.....	.90			Groton.....	1.10	Leslieville.....	.60
Bow City.....	.60	Dakin.....	1.65	Gull Lake.....	.65	Lethbridge.....	.70
Bow Island.....	.90	Dalroy.....	.15	Gunn.....	1.15	Lewiston.....	1.50
Bow Slope.....	.65	Dapp.....	1.50			Lines.....	1.65
Bowden.....	.40	Darwell.....	1.15	Harke.....	.95	Listburn.....	1.20
Bowell.....	.95	Davis.....	1.35	Halfway Lake.....	1.35	Lloydminster.....	1.50
Bowmanton.....	1.05	Daysland.....	.90	Halkirk.....	.75	Lomond.....	.50
Box Springs.....	1.50	Del Bonita.....	.95	Hanna.....	1.35	Lonira.....	1.35
Boyle.....	1.50	Delburne.....	.55	Hardisty.....	.65	Looma.....	1.00
Boyne Lake.....	1.50	Della.....	.55	Harmattan.....	1.00	Lougheed.....	1.00
Bragg Creek.....	.20	Delph.....	1.35	Harvest Vale.....	.35	Lousana.....	.55
Brant.....	.30	Denhart.....	.75	Hay Creek.....	1.35	Low Creek.....	1.35
Brecon Hill.....	1.05	Desjarlais.....	1.35	Hay Lakes.....	.85	Loyalist.....	.90
Breezeland.....	.95	Deville.....	1.05			Lucky Strike.....	1.05
Brooks.....	.65	Didsbury.....	.30			Lunnford.....	1.35
Brosseau.....	1.35	Donalds.....	.75			Luzan.....	1.35
Bruce.....	1.05	Doondale.....	1.10				
Bruderhelm.....	1.20						

TO	Station-to-Station Day Rate	TO	Station-to-Station Day Rate	TO	Station-to-Station Day Rate	TO	Station-to-Station Day Rate
	\$ c		\$ c		\$ c		\$ c
Macleod	.60	Olson Coulee	.60	Rockyford	.30	Swalwell	.30
Mageau	1.50	Onoway	1.15	Rocky Mt. House	.65	Sweet Grass, Mont.	1.15
Magnolia	1.15	Opal	1.35	Rocky Rapids	1.00	Sylvan Lake	.55
Magrath	.80	Orlon	1.15	Roeske	1.35	Taber	.75
Manola	1.35	Orvilton	1.50	Rosalind	.85	Tawatinaw	1.35
Manville	1.20	Oxville	1.35	Roseglenn	1.05	Tees	.65
Manyberries	1.15	Oyen	1.00	Rose Lynn	.70	Telfordville	.95
Markerville	.50			Rosebud	.35	Thelma	1.20
Masnasin	1.05			Rosemary	.55	Therien	1.50
Maunsell	.60	Pakan	1.35	Rossington	1.35	Thorhill	1.35
Maybridge	1.35	Pakowki	1.10	Rowley	.50	Three Hills	.35
Mayerthorpe	1.35	Parkland	.40	Rowdale	1.35	Tofield	1.05
McKellar	1.35	Park View	.80	Rumsey	.50	Tomahawk	1.05
Meanook	1.50	Partridge	1.00	Rush Lake	1.10	Travers	.55
Mecheche	.50	Pashley	1.10	Ryley	1.05	Tring	1.50
Medicine Hat	1.00	Patricia	.70	St. Albert	1.10	Trochu	.40
Meeting Creek	.80	Pearsonville	.90	St. Joseph	1.65	Two Hills	1.35
Mellowdale	1.35	Peat	1.50	St. Kilda	1.15	Upper Elbow	.20
Metskow	1.05	Pekisko	.30	St. Lina	1.50	Vale	1.10
Milk River	1.00	Pemukan	1.05	St. Paul	1.50	Valleyfield	.95
Millarville	.20	Pendant d'Oreille	1.15	St. Vincent	1.50	Vanestl	1.35
Millet	.90	Penhold	.50	Sammons	1.10	Vanvleet	1.35
Millfeent	.65	Peno	1.35	Sandy Lake	1.15	Vegreville	1.15
Milo	.40	Perryvale	1.50	Sangudo	1.20	Verburg	1.05
Minburn	1.20	Phillips	1.05	Sarrall	1.65	Vermillion	1.35
Mirror	.65	Pibroch	1.35	Schuler	1.10	Veteran	.90
Monarch	.60	Pickardville	1.35	Scollard	1.50	Victoria	1.35
Monitor	1.00	Pincher Creek	.70	Scottfield	.75	Viking	1.05
Morinville	1.20	Pine Creek	1.35	Seaforth	.95	Vilna	1.50
Morningside	.70	Pollockville	.70	Seba	1.10	Vimy	1.35
Morrin	.45	Ponoka	.70	Sedalia	.85	Vulcan	.40
Mooside	1.35	Priddis	.15	Sedgewick	.95	Wabamun	1.10
Moyerton	1.35	Princeton	.30	Seven Persons	1.00	Waddington	1.05
Mulhurst	.85	Provost	1.15	Seymour	1.20	Wahstao	1.35
Mundare	1.15	Radway	1.35	Shandro	1.35	Walnwright	1.15
Munson	.45	Rainier	.65	Sheerness	.70	Walker	1.50
Namaka	.25	Ranfurlly	1.15	Sibbald	1.05	Walsh	1.20
Nanton	.35	Raven	.50	Sion	1.20	Wardlow	.70
Naughton Glen	1.35	Ray	1.15	Skiff	.90	Warner	.90
Neerlandia	1.35	Raymond	.80	Smoky Lake	1.35	Warspite	1.35
Nemiscam	1.00	Redcliff	1.00	Soda Lake	1.35	Wasel	1.35
Newbrook	1.50	Red Deer	.55	Southesk	.60	Waskatenau	1.35
New Dayton	.85	Red Willow	.70	Southworth	1.35	Waterton Park	.85
New Norway	.85	Redland	.35	Spedden	1.50	Wayne	.45
New Sarepta	1.00	Redwater	1.35	Spring Coulee	.80	Westerose	.85
Nobleford	.60	Reist	.80	Spring Point	.60	Westlock	1.35
North Cooking Lake	1.05	Retlaw	.65	Stampede	.30	Wetaskiwin	.85
North Mosside	1.35	Ribstone	1.20	Standard	.30	White Court	1.35
North Park	1.50	Richards	1.65	Stanmore	.70	Whitla	.95
Northbank	1.35	Richardson	1.20	Stavely	.40	Wisdom	1.10
Northern Valley	1.50	Richdale	.70	Stottler	.65	Winnifred	.95
Northleigh	1.00	Richfield	.95	Steveville	.70	Wrentham	.85
Nugent	.75	Rife	1.50	Stirling	.80	Yeoford	.85
O'Connor	1.15	Rimbey	.70	Stony Plain	1.05	Youngstown	.80
Odynski	1.35	Rio Alto	.25	Strathmore	.20	Zawale	1.35
Okotoks	.15	Riverbow	.65	Strome	.90		
Olds	.35	Riverbow Ferry	.65	Suffield	.85		
Olin Creek	.60	Rochester	1.50	Sullivan Lake	.75		
		Rochfort	1.35	Sunnynook	.65		
				Sunnyslope	.30		

Save That Unnecessary Trip

BY USING

LONG DISTANCE

If you do not need to speak to a Particular Person, tell the Long Distance Operator so. Station-to-Station Service is Quicker and Cheaper.

See Rules and Regulations on Pages 7 and 8.

In addition to the points on preceding pages Long Distance Connection may be had also with the following places in Alberta and British Columbia, rates for which can be obtained by calling "Long Distance":—

ALBERTA POINTS

ACADIA VALLEY	CONTENT	HAIRY HILL	MEADOW CREEK	SCOTSTOUN
ACHESON	COPEVILLE	HALLADAY	MENAİK	SEEBE
AETNA	CORNUCOPIA	HALLEY	MERNA	SHARROW
AGRICOLA	COUNTRY CLUB	HALLMAN	MEWASSIN	SHEPARD
ALBAY	COUSINS	HANEYVILLE	MIDNAPORE	SIEBERTVILLE
ALBION RIDGE	CRAIGMILLAR	HASTINGS COULEE	MILLER	SILVER LAKE
ALDERSYDE	CRANMER	HAWKEYE	MILNERTON	SIMONS VALLEY
ALICE LAKE	CROWFOOT	HAYNES	MINOTT	SOCIAL PLAINS
ANGUS RIDGE	CURREY	HAYTER	MORLEY	SPRING LAKE
ANZAC	DAHMER	HAZELMERE	MOSSLEIGH	SPRINGBANK
ARDENODE	DALEMEAD	HEARNLEIGH	MOUND	SPRINGDALE
ARDENVILLE	DAUNTLESS	HEATH	MOUNTAIN VIEW	SPRINGVALE
ARDLEY	DAVISBURG	HEATHER BRAE	MOUNT LOOKOUT	SPRUCE GROVE
ARMENA	DEERING	HERRONTON	MURRAY VALLEY	STAND OFF
ARROWWOOD	DELACOUR	HETHERINGTON		STAPLEHURST
ASKER	DEMAY	HIGHFIELD	NAKAMUN	STAR
AVION	DEWBERRY	HILL END	NAMAYO	STERLINGVILLE
BADGER LAKE	DE WINTON	HILLCREST	NEAPOLIS	STOCKS
BALMORAL	DIAMOND CITY	HILLSPRING	NEIGHBORVIEW	STOPPINGTON
BANKHEAD	DICKSON	HOBBEWA	NEVIS	STRAND
BARDO	DILIGENCE	HORSE HILLS	NEW BRIGDEN	STRANGMUIR
BARNWELL	DINA	HORSESHOE	NEW LINDSAY	STREAMSTOWN
BARONET	DINANT	COULEE	NEW LUNNON	SUGAR BOWL
BATHGATE	DINTON	HORSESHOE FALLS	NEW OXLEY	SULPHUR SPRINGS
BATTLE	DOBSON	HORSESHOE LAKE	NEW SPRUCE	SUMMERLAND
BATTLE BEND	DODDS	HUBALTA	GROVE	SUMMERVIEW
BATTLE RIDGE	DOG POUND	HUGHES	NIGHTINGALE	SUNDRE
BATTLEVIEW	DORENLEE	HUNTERVILLE	NISBET	SUNNYDALE
BEAUMONT	DRY FORK	INDUS	NISKU	SUPERIOR
BEAVER HILLS	DUAGH	INDUSTRIAL	NORMA	TALBOT
BEAVER LAKE	DUFFIELD	INGA SCHOOL	NORTON	TAYLORVILLE
BEAVER MINES	DUHAMEL	INGLETON	NOYES CROSSING	TERRACE LAKE
BEAZER	DUNMORE	INGLIS		THE HUB
BEDDINGTON	EAGLE HILL	IRWINVILLE	OGDEN	THORSBY
BELLEVUE	EARLIE	JEFFREY	OHATON	THRONE
BELLSHILL	EARLING	JOFFRE	OLD BRANT	TINDASTOLL
BELMONT	EARLVILLE	JOSEPHBURG	OLD SPRUCE	TOLLAND
BENNETT	EASTERVALE	JUMPING POUND	OLIVER GROVE	TOMMY LA POTAC
BISMARK	EASTWAY	KANATA	O'MARA	TONGUE CREEK
BISSELL	EDISON	KENEX	ORTON	TUDOR
BITTERN LAKE	ELK ISLAND PARK	KESLER	OTOSKIWAN	TURIN
BLACK DIAMOND	ELKTON	KILBOURN	OUELLETTEVILLE	TWELVE MILE
BLACKFALDS	ELKWATER	KIMBALL	OWENS	COULEE
BLACKFOOT	ELLERSLIE	KIPP	PARADISE VALLEY	TWIN BUTTE
BLAKESVILLE	EMERY	KIRKCALDY	PARTRIDGE HILL	PASSEBURG
BLONDHEIM	ENSIGN	KNEE HILL VALLEY	PATIENCE	PAXSON
BLOOD RESERVE	ENSLEIGH	LA CALMETTE	PEARCE	PICTURE BUTTE
BONLEA	EVERETT	LAKE DE MAY	PINCHER STATION	PINE LAKE
BOW VALLEY	EWELME	LAKE MINNE-	PIRMEZ CREEK	PLEASANT VIEW
BOWVILLE	EXCELSIOR	WANKA	POPLAR RIDGE	POPLAR SITE
BRADSHAW	FABYAN	LAKEVIEW	PRETTY HILL	PUFFER
BREMNER	FAIRACRES	LAMOUREUX	PURPLE SPRINGS	QUARREL
BRIGHTVIEW	FAIRBANK	LARSEN	QUEENSTOWN	RABBIT HILL
BRITAIN	FAIRFIELD	LATHOM	RANCHVILLE	RALEY
BROCKET	FAIRYDELL	LAVESTA	RED LODGE	REID HILL
BROOKSLEY	FALUN	LAWDALE	REID HILL	REXBORO
BROWNFIELD	FEDERAL	LAWNTON	RICH VALLEY	RIDDELLVALE
BROWNLOW'S	FENN	LEAVITT	RIDDELLVALE	RISING SUN
LANDING	FERRY POINT	LEESHORE	RIVIERE QUI	BARRE
BUFORD	FERRYBANK	LEOPOLDVILLE	ROCKELING BAY	ROCKY VIEW
BURMIS	FISHBURN	LEWISVILLE	RODINO	ROLLING GREEN
BURNT LAKE	FLEET	LIBERTY	ROSEDALE	ROSENHEIM
CALDBECK	FOREST LAWN	LILLE	ROSENROLL	ROSYTH
CALDER	FRANK	LINEHAM	ROUND HILL	RUSYLVA
CALDWELL	FRANKBURG	LIVINGSTON	SALISBURY	SALTAUX
CAMPBELL LAKE	GHOST PINE	LOCH SLOY	SAMPSONTON	SARCEE
CAPPON	GILLEN	LOCKHART	SATHER	
CARBONDALE	GILPIN	LONG		
CARDIFF	GLADYS	LONG COULEE		
CARNFORTH	GLENBOW	LONGVIEW		
CARSLAND	GLENFORD	LUNDBRECK		
CARTHEW	GLENIFFER	LUSIGNAN		
CASAVANT	GLENVIEW	MAJORVILLE		
CHAILEY	GOLDEN SPIKE	MAKEPEACE		
CHESTERWOLD	GOOD HOPE	MALMO		
CHIGWELL	GOOD LUCK	MANFRED		
CLEARVIEW	GOPHER HEAD	MAPLE LEAF		
CLOSE	GRAINDALE	MARTINS		
CLOVER BAR	GRAINGER	MARWAYNE		
CLYMONT	GRAND VALLEY	MAUGHAN		
COAL CITY	GRANT LAKE	MAUNDERS		
COALDALE	GREEN GLADE	MAYBUTT		
COALHURST	GREENSHIELDS	MAYTON		
COLEMAN	GRIESBACH	MAZEPPA		
COLINTON	GROS VENTRE	McEWEN		
COMMERCE	GROSMONT	McLAUGHLIN		
CONJURING CREEK	GWYNNE	McNALLY		

BRITISH COLUMBIA POINTS

BAKER	DORR	HANBURY	LUMBERTON	ST EUGENE MIS-
BAYNES LAKE	ELKO	HARTLEY	MARYSVILLE	SION
BULL RIVER		HOSMER	MICHEL	WALDO
CAITHNESS	FERNIE	JAFFRAY	MORRISSEY	WARDNER
COAL CREEK	FORT STEELE	KIMBERLEY	MOYIE	WASA
CRANBROOK	GALLOWAY	KINGSGATE	NATAL	WYCLIFFE
CROWS NEST		KRAG	OLSON	YAHK

Limited Long Distance Connection

Between the following points in Alberta and SASKATCHEWAN

CONNECTING VIA MEDICINE HAT *(Alberta Offices)*

ALDERSON
ATLEE
BASSANO
BINDLOSS
BLAIRMORE
BOW ISLAND
BOWELL
BOWMANTON
BROOKS

BUFFALO
BURDETT
CALGARY
CARDSTON
CAVENDISH
COUTTS
DUCHESS
GRASSY LAKE
HARVEST VALE
HILDA

IRON SPRINGS
IRVINE
JENNER
LETHBRIDGE
MACLEOD
MAGRATH
MILK RIVER
MEDICINE HAT
NEW DAYTON

PASHLEY
PINCHER CREEK
RAYMOND
REDCLIFF
RETLAW
ROSEGLAN
SCHULER
SEVEN PERSONS
SPRING COULEE
STIRLING

SUFFIELD
SWEETGRASS,
MONT.
TABER
VALE
WADDINGTON
WALSH
WARNER
WHITLA
WINNIFRED

and *(Saskatchewan Offices)*

ABBEY
ANTELOPE
ADMIRAL
BATTRUM
BEVERLEY
CABRI
CARMICHAEL
CARON
CHAPLIN
DOLLARD
ERNFOLD

ESTUARY
EAST END
GULL LAKE
HATTON
HERBERT
INDIAN HEAD
INSTOW
KINCORTH
LANCER
LEADER
LEMSFORD

LUMSDEN
MAPLE CREEK
MOOSE JAW
MORSE
MORTLACH
N. FORRES
PARKBEG
PENNANT
PIAPOT
PORTREEVE
PRELATE

RAVENSCRAG
REGINA
ROBSART
ROULEAU
RUSH LAKE
SCEPTRE
SCOTSGUARD
SECRETAN
SHACKLETON
SHAUNAVON

SIDEWOOD
STRASBOURG
SUCCESS
SWIFT CURRENT
TOMPKINS
WALDECK
WEBB
WESTERHAM
WEYBURN
WOLSELEY

Unlimited Long Distance Connection

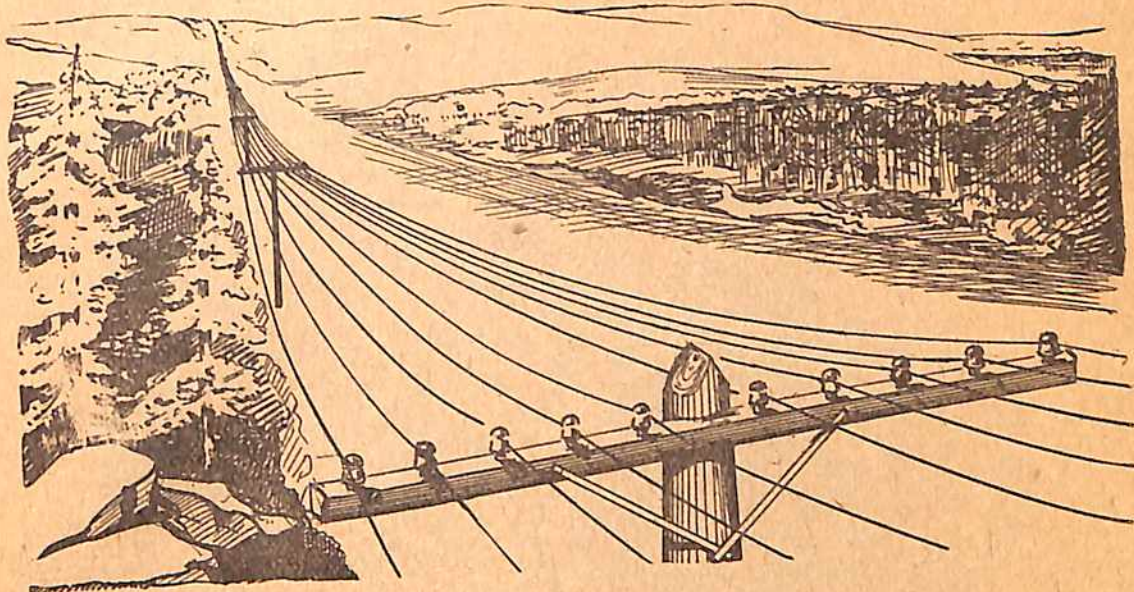
From all points in Alberta to all offices of the
Mountain States Telephone and Telegraph Company in Montana

SELL YOUR GOODS by Telephone

Our Long Distance Service enables you to personally canvass Country Customers at a minimum of expense, and an enormous saving of time.

ADVERTISE your goods in the Telephone Directory and complete the sale on the Long Distance Telephone.

ALBERTA GOVERNMENT TELEPHONES



This Way
—to Broader Markets

Right at your elbow is your Long Distance telephone. With it, you can talk with any of 100,000 telephones in Alberta, Saskatchewan and British Columbia.

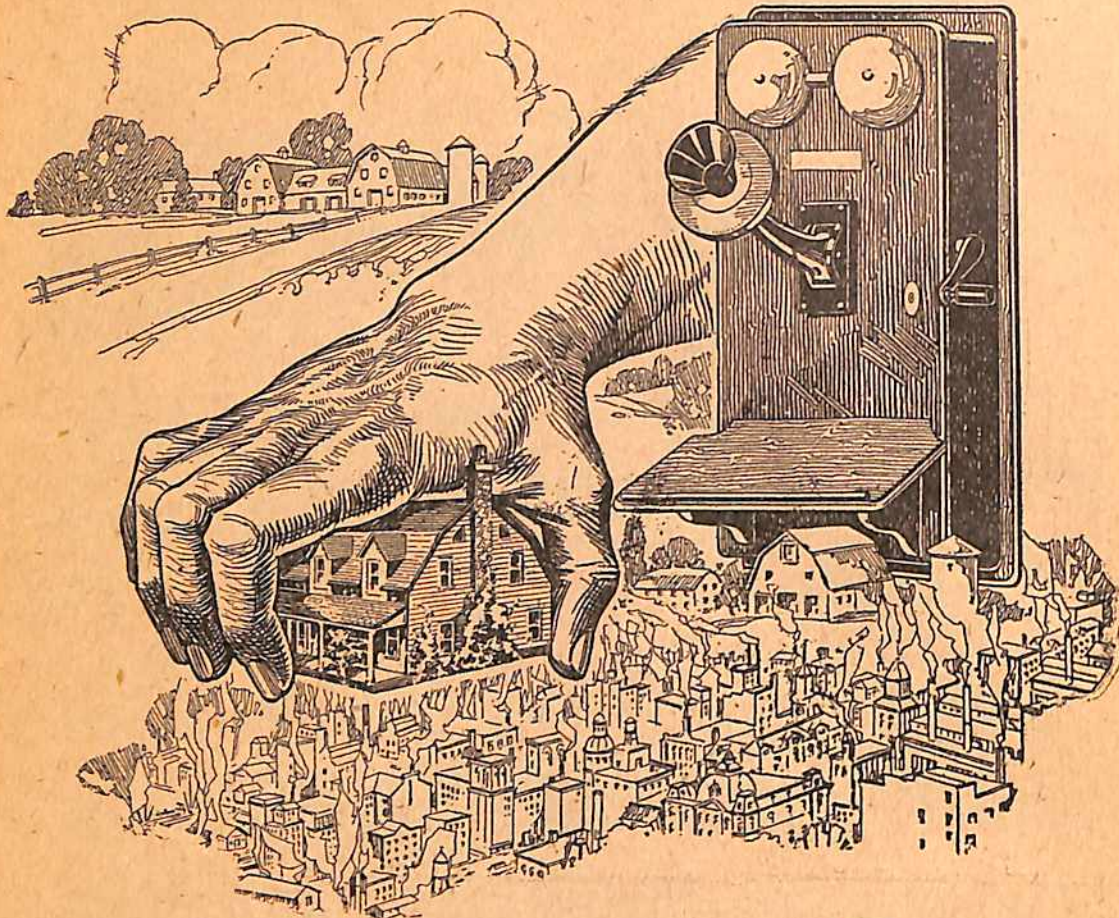
“Clear the Way!” Long Distance seems to say—“here’s an important message!”

For there is something impressive about a Long Distance call. The customer is favorably impressed before he knows what the message is about. And Long Distance gives you the right of way into every man’s office. He can ignore your advertising, your letter, or even your traveller, but ignore a Long Distance call? Instinctively he reaches for the telephone!

Keep down selling expense. Use your “Silent Partner.” You will be amazed to find how many people can be sold your product by Long Distance—quickly—economically.

If you have several calls to make, our Local Manager can arrange to have one follow the other. Think of him as the Manager of *your* telephone service. He can suggest ways of applying Station-to-Station service to your business.

THE ALBERTA GOVERNMENT
TELEPHONES



Brings the Farm to Town

NOW that he can order it at once by Long Distance from his favorite dealer in village, town or city, nothing is too good for the farmer. "You advertised a special sale of phonographs in today's paper. Ship me one"—he telephones.

Within the same convenient radius of your store are scores of thrifty housewives who would be pleased to have a merchant solicit their trade by Long Distance. Even if a sale does not result, you have advertised your business in a very effective way. They will probably call when they come to town, or order from your advertising. It's human nature.

A tire dealer called up 29 strangers by Long Distance and sold tires to 8 of them. A follow-up letter or personal call later brought nearly all the others to his store.

Don't let your telephone idle. Long Distance can bring suburban prospects within sound of your voice. Turn it into a salesman, and keep it busy. Every other means of communication is a substitute for the voice—the voice is YOU.

Think of our Manager as the Manager of your Telephone Service.

**THE ALBERTA GOVERNMENT
TELEPHONES**

CALGARY

128 Seventh Avenue West

CONTINUOUS SERVICE

For Information regarding New Subscribers, Change of Telephone Numbers, Long Distance Line Charges, New Toll Offices, etc.	Call	9 2
For Trouble	"	93
For Rural Subscribers	"	94
For Long Distance Operator	"	0
For Chief Operator	"	M 5514
For District Traffic Chief	"	M 6113
Report Telephones Out of Order and Unsatisfactory Local Service to		93
Report Unsatisfactory Long Distance Service to Chief Operator		M 5514
To City Subscribers:—For connection with rural subscribers, call 94, and when operator answers give the number of rural subscriber desired, distinctly, as R 3-5-0-2.		
For List of Rural Subscribers, see pages following list of Exchange Subscribers.		
For FIRE	Call	M 1197

PUBLIC PAY STATIONS

62 Alexandra Hotel—9th Ave E	12 Jeffrey Drug Co—122 4th St SE
56 Allen Theatre—119 8th Ave E	22 King Edward Hotel—9th Ave & 4th St E
67 Black's Drug Store—Carscallen Blk., Sunnyside	26 King George Hotel—9th Ave W
23 Braemar Lodge—4th Ave W	27 King George Hotel—9th Ave W
53 Brown's Drug Store 4th St & 17th Ave W	94 Kolb's Restaurant—8th Ave W
25 C.N.R. Depot—18th Ave & 1st St W	Liggetts-Findlay Drug Stores—
74 C.P.R. Depot	66\ 8th Ave & 1st St W
76 C.P.R. Depot	68\
96 C.P.R. Depot	63\ 8th Ave & Centre St
41 Calgary Auto Club —St Patrick's Island	80\
61 Capitol Theatre—8th Ave W	10 MacFarlane's Drug Store—12th Av & 1st St W
52 Capitol Theatre—8th Ave W	99 Maclean's Drug Store—Maclean Blk
91 Club Cafe—111 8th Ave W	11 Maple Leaf Candy Co—140 8th Ave E
35 College Apts.—1722 5-A St W	8 McCrohan's Cafe—136-138 9th Ave W
60 Crooks, The Druggist—17th Ave & 14th St W	95 McDermid Drug Store—128a 8th Ave W
51 Davidson Susan—507 4th St W	48 McGill's Drug Store—17th Ave & 7th St W
30 Dean's Pharmacy—1314 B 9th Ave E	36 McIvor's Drug Store—718 3rd St NE
83 Dominion Hotel—120 9th Ave W	38 Morgan Billy Confectionery—1229 2nd St E
44 Dubisky's Confectionery—139 7th Ave E	59 Palace of Eats—8th Ave & 1st St W
64 Dunford Drug Co.—Herald Bldg.	4 Palace Theatre—Ladies Waiting Room
33 Empire Confectionery—502 8th Ave E	78 Palace Theatre—8th Ave W
16 Empire Hotel—9th Ave E	70 Palliser Hotel—9th Ave W
24 Empire Hotel—9th Ave E	37 Park Hotel—4th Ave E
39 Empress Confectionery—1225 9th Ave E	93 Patricia The—234 8th Ave W
58 Esdale's Drug Store—1317 1st St W	98 Perry Drug Store—Alberta Corner
21 Exhibition Office—Victoria Park	14 Princess Drug Co—8th Ave & 2nd St E
15 Grand Cigar Store—Lougheed Bldg	73 Queen's Hotel—8th Ave & 2nd St E
29 Great War Vets Assoc—7th Ave E	45 St. George's Island Pavilion—St. George's Island
77 Great War Vets Assoc—7th Ave E	49 Scotia Confectionery—228 17th Ave E
34 Harry's Drug Store—218 8th Ave E.	50 Stock Yards Hotel—East Calgary
7 Home Delicacies—135 8th Ave W	40 Sugar Bowl Confectionery—140 9th Ave W
100 Hotel Noble—1st St W & 13th Ave	75 Temple-Duff Drug Co.—210 8th Ave. W
20 Hotel Noble—1st St W & 13th Ave	46 Thomas Block—707 2nd St W
32 Hotel Noble—1st St W & 13th Ave	19\ United Cigar Stores Ltd—cor 8th Ave & 1st St W
71 Hotel Noble—1st St W & 13th Ave	54\
47 Hotel Royal—cor 2nd St W & 8th Ave	43 Victoria Hotel—121a 8th Ave E
85 Hudson's Bay Company—1st St W	84 Victoria Hotel—121a 8th Ave E
86 Hudson's Bay Company—1st St W	79 Waverley Billiard Parlors—210 8th Ave W
87 Hudson's Bay Company—1st St W	31 White Lunch Ltd—128 8th Ave E
88 Hudson's Bay Company—1st St W	13 Whitney Hotel—110 9th Ave W
89 Hudson's Bay Company—1st St W	55 Williams Drug Store—239 16th Ave NW
92 Hudsons Bay Tabacco Store—1st St W	72 Yale Hotel—9th Ave E
57 Imperial Hotel—9th Ave & 2nd St E	
90 Institute of Technology—North Hill	

A Good Investment

THE man who advertises wisely invests his money so that it will produce good dividends.

* * *

An Advertisement in the Alphabetical Section of the Telephone Directory is an investment that gives you the widest publicity you can obtain, at a minimum of cost. A series of head or foot lines, running through this section of the book, will familiarize the public with your name, and the service or commodity in which you specialize, to an extent that no other advertising medium can equal.

* * *

The Classified Section of the Telephone Directory brings you into direct touch with buyers—It reaches them at the psychological moment—when they want to buy something. Be sure that every branch of your business is properly classified—otherwise your trade may go to those who have availed themselves of the opportunity you have neglected.

* * *

Directory advertising is both effective and economical—Every time the Telephone is used the advertisements in the Directory become active salesmen!

* * *

Keep your name constantly before the buying public by advertising in both sections of the Telephone Directory, and the persistent reiteration of your sales message will prove to be a sound investment that will earn increased dividends for you.

* * *

DO IT NOW!

* * *

For Advertising Rates and particulars apply

Phones:

M6005

and

M6198

**Directory Advertising
Department**

ALBERTA GOVERNMENT TELEPHONES

128 7th Avenue West, Calgary

Phones:
M6286
M3940

Empire Cleaning & Dyeing Co Ltd

CALGARY

"RELIABLE! THAT'S ALL!"

ALBERTA

234-236
12th Ave.
West

Calgary Exchange Subscribers

(For Rural Subscribers see Pages at End of Exchange Subscribers)

A

- M 3292 **A A AUTO BAGGAGE TRANSFER** Edgar F Steel Prop 617 7th Ave E
M 5201 A 1 Cleaners & Dyers 1235 2nd St E
M 3344 **AI WINDOW CLEANING CO** 1315 Centre St
M 2223 A B Auto Livery 110 9th Ave W
M 4485 **A B C BATTERY SERVICE** 420-2 9th Ave E
M 6479 A B Cafe 206a Centre St
M 4445 **AARON AUTO LIVERY** Cruickshank & Soper 815a Centre St
M 5181 Aaron Joseph L res 721 5th Ave W
M6444 **ABBOTT AUTO LIVERY** Norman Soper 106 9th Ave W
H 1141 Abercrombie Wm res 1430 2-A St NW
M 1394 Aberdeen Apts Janitor 2206a 4th St W
W 4245 Aberhart William res 1216 13th Ave W
M 7234 Abram Mrs Emma res 1 Costello Blk
M 3790 Acadia Fire Insurance Company Local Agents F W Mapson & Co Union Bank Bldg
M 1043 **ACADIA FIRE INSURANCE COMPANY IHE** Thos Bailie Inspector 329 Alberta Corner
M 6901 Ace Cartage James Whittaker 234 30th Ave S E
M 7318 **ACKLAND D & SON LTD** Wholesale Carriage & Wagon Hardware 722 11th Ave W
M 7075 Auto Accessory Dept & Shipping
M 3576 **ACKLAND W A AGENCIES** Insurance 502 Lougheed Blkdg
W 4296 Ackland W A res 819 17th Ave W
M 7785 **ACME AUTO BAGGAGE TRANSFER** 526 12th Ave W
M 3894 **ACME FRUIT CO LTD** Manager and Sales Dept 510 9th Ave W
M 6599 Credit Manager and General Office
M 5050 City Sales & Shipping Dept
M 2997 Orders & Confectionery Dept
H 1801 P C Hiles Manager res 311 12th Ave NW
W 2366 L B Holmes Asst Mgr res 1523 15th Ave W
W 2276 W J Holderoft Credit Mgr res 1501 7th St W
M 1894 W Orr Warehouse Foreman res 614 14th Ave E
M 2238 Acme Garage J H Watts 706 10th St W
L 1492 **ACME GROCERY** 1209 Centre Ave NE
L 1206 **ACME PLUMBING** 142a 10th St NW
L 1301 Alex R T Anderson res 1804 24th Ave NW
L 1206 Night Calls S M Sharp
W 1982 Acton George res 1509 22nd Ave SW
M 3792 Acton Mrs James res 418 13th Ave E
H 1018 Acton James res 250 19th Ave NE
M 1255 **"AD" CARDS** J. Bird 20 Lineham Blk
L 1818 Adam Charles res 220 15th St NW
W 4620 Adam J G res 1805 17th St W
H 1962 Adam James res 409 18th Ave NW
M 2665 Adams A res 630 11th Ave W
M 4904 Adams A F res 240a 29th Ave SE

AUTO TAXI

AUTO TAXI & LIVERY SERVICE

M3545

J. J. REEDY, Proprietor
2nd AVENUE WEST

- M 6888 **ADAMS C F & EDWARDS** Barristers & Solicitors Bank of Montreal Bldg
M 1281 Charles F Adams K.C. res 721 Riverdale Ave
M 7549 Manley J Edwards res 2201 2nd St W
M 1281 Adams Charles F KC res 721 Riverdale Ave
L 1802 Adams D R res 226 10½ St NW
M 1348 Adams E D res 1002 39th Ave W
M 1638 Adams F C res 412 5th Ave W
E 5019 Adams F G res 1625 17-A St E
M 5227 Adams G G res 407 40th Ave W
M 1998 Adams H K res 329 36th Ave W
H 1071 Adams Henry J res 2312 1st St NW
H 2443 Adams J res 219 23rd Ave NE
M 2251 Adams J D & Co Rd Grading Machy 224 11th Av W
M 5825 Adams J H res 316 20th Ave W
M 9394 **ADAMS DR J M** Eye Ear Nose & Throat 508-9 Herald Bldg
M 7252 Adams Dr J M res 314 Roxboro Rd
M 7540 Adams Margaret Public Steno 1008 Herald Bldg
M 6905 Adams S res 3 Riverside Apts
L 1441 Adams S H res 1340 16-A St NW
L 1480 Adams T E res 2 Ross Blk
M 6870 Adams Thos R res 331 13th Ave E
M 2418 Adams W A Groceries No 1 Store 101 5th St W
H 2230 No 2 Store 202 16th Ave NE
W 4957 Adams W S res 839 18th Ave W
E 5661 **ADAMS WOOD & WEILLER LTD** Live Stock Commission Merchants Livestock Exchange E Calgary
M 1998 Harvey K Adams res
M 1616 **ADAMS & FITCH** Barristers & Solicitors 59-60a Union Bank Bldg
L 1441 S H Adams res 1340 16-A St NW
L 1647 I F Fitch res 1312 16th St NW
M 5212 Adamson J S res 234 39th Ave W
M 2307 **ADAMSON J S CO** Wholesale Fruit & Vegetables 506 9th Ave W
M 2307 City Orders
M 7233 Country Orders
M 5212 Nights, Sundays and Holidays
M 3009 **ADANAC TRANSFER & AUTO CARTAGE** J B Miller 621 1st Ave W
L 1270 Adcock J E res 411 13th St NW
M 4186 Addington G B res 40 Central Bldg
H 2023 Addy C E R res 225 6th Ave NE
M 4746 Adie G G res 3612 Stanley Rd
M 4773 **ADLAM COLLEGE OF MUSIC** G H Adlam Director 405a 8th Ave W

**For Long Distance Rates
and Points in Other Districts**

**See Pages 9 & 10
or Call "LONG DISTANCE"**

- H 1413 Adshead H B res 119 28th Ave NW
- M 4486 Advance-Rumely Thresher Co Inc Repair Dept
628 9th Ave W
- M 1978 Advance-Rumely Thresher Co Inc General Office
L D Benedict Mgr 628 9th Ave W
- M 7887 Advance Shoe Repairs The Wm Robinson 1223
2nd St E
- M 3414 Aellen H A res 1 Bell Blk
- M 7331 **AETNA INSURANCE CO** 55 Canada
- W 4768 C J Malcolm Special Agent res [Life Bldg]
- M 1443 **AGNEW WALTER G** Jeweller 813
1st St W
- M 3315 Agnew Walter G res 113 Garden Crescent
- M 3476 Agrell F W res 209 25th Ave W
- L 1156 Ahrens Fritz res Morley Trail
- M 3945 **AIELLO S** Importer Italian & French Special-
ties Whol & Retail 201 4th Ave E
- M 9577 Aikenhead Dr Albert E Phys & Surg 140 6th Ave W
- W 1948 Aikenhead Dr Albert E res 913 19th Ave W
- M 7804 Aikins E W res 1415 5th St E
- M 3926 Ainslie John res 331 4th Ave E
- E 5365 Airlie P res Block 23 Albert Park
- M 4155 Aisenstat Esse res 23 Riverside Apts
- H 1323 Aitken Allan D res 1437 2nd St NW
- M 3016 Aitken Archie P res 101 24th Ave E
- H 1995 Aitken J B res 721 4 1/2 St NE
- M 9109 Aitken Miss Jean res 318 Underwood Blk
- M 5231 Aitkens E J res 307 18th Ave W
- W 4056 Aitkens George res 1749 College Lane
- H 1173 **AJAX ELECTRICAL & SPORT-
ING GOODS** George Rounce 219 16th
Ave NW
- H 1691 Aked Edward res 721 17th Ave NW
- M 2242 **AKITT & HARRISON** Sight Special-
ists 807 Herald Bldg
- W 4175 Akitt Herbert J res 932 15th Ave W
- W 4444 **AL AZHAR TEMPLE** 506 17th Ave W
- W 4496 A C Casey Mgr res 1115 13th Ave W
- W 2254 Alaska Furriers Frank Janett Prop
- M 5990 Alberta Associated Oil Fields Ltd 415 Lancaster Bldg
- M 7289 **ALBERTA AUCTION MART**
J Roginsky Prop 402 8th Ave E
- M 6123 **ALBERTA AUTO RADIATOR
WORKS** 603 1st St E
- M 4485 **ALBERTA BATTERY CO LTD**
420-2 9th Ave E
- E 5168 Alberta Box Co Ltd C J Williams Mgr 11th Ave
and 11th St E
- E 5290 Coal & Wood Mills Estate
- E 5172 D L Boggs Coal & Wood Dept res
- M 4554 **ALBERTA BRITISH COLUMBIA
HAY & GRAIN CO** 301a-302 Grain E
- M 6840 Alberta Conference of S.D.A. 304 Oddfellows Bldg
- H 1181 **ALBERTA ELECTRIC CO** 135 16th
- H 1545 M V Anderson Manager res [Ave NW]
- M 7981 **ALBERTA FARMER** Herald Building
Private Branch Exchange Connecting all Depts

- DEPARTMENTS**
- General Information
 - Advertising
 - Subscriptions
 - Editorial & News
 - Advertising Manager
 - Editor

- ALBERTA FARMER—Continued**
- NIGHTS SUNDAYS & HOLIDAYS
- M 7981 Editorial & News Department
- M 7985 Subscriptions
- M 7987 Business & Advertising
- M 5561 **ALBERTA FARMERS' CO-
OPERATIVE ELEVATOR
COMPANY LIMITED** (Successors
United Grain Growers Ltd)
- M 4860 Alberta Financial Brokers Ltd 12 Elma Blk
- M 6547 Alberta Flour Mills Ltd office 514 P Burns Bldg
General Manager Edw E Stevens
Secretary Treasurer S K Pearce
- E 5434 Milling Plant East Calgary
- M 6565 **ALBERTA FUEL CO** F T Highfield
Prop 6th St & 8th Ave E
- M 7086 Alberta Furniture Exchange S Sigurdsson Slingsby
Blk Riverside
- M 9521 **ALBERTA GOVERNMENT EM-
PLOYMENT BUREAU** 144 7th
Ave E
Private Branch Exchange connecting all Depts
Ask operator for class of workers required
- M 7408 Alberta Government Liquor Vendor Roberts Blk
601 11th Ave W
- M 4417 Retail Branch 1st St W & 10th Ave
- ALBERTA GOVERNMENT
TELEPHONES** 128 7th Ave W
- COMMERCIAL DEPT—CITY
- M 3430 General Office
- M 3699 Adjustments and Collections
- M 6750 City Clerk
- M 3490 Applications and Renewals
- M 6430 City Commercial Manager
- COMMERCIAL DEPT—DISTRICT
- M 3830 General Office
- M 7323 District Commercial Manager
- M 6198 DIRECTORY AND ADVERTISING DEPT
- M 6005 Directory Supervisor
- PLANT DEPT
- M 6126 Plant Chief "District"
- M 6121 Plant Chief "City"
- M 6115 Stores
- TRAFFIC DEPT
- M 6113 District Traffic Chiefs Calgary City & District
- M 1940 **ALBERTA GRAIN CO LTD** 8th Floor
Lancaster Bldg
- E 5206 **ALBERTA GROCERY STORE** cor
19th Ave & 9th St E
- M 3851 Alberta Home Builders Ltd 410 Grain Exchange
- M 1805 Alberta Hotel Association 120 9th Ave W
- M 7926 **ALBERTA HUDSON & ESSEX
MOTOR SALES CO** 601 1st St E
Private Branch Exchange connecting all Depts.
H A Ross Manager
- Accountant
- Retail Sales
- Wholesale Sales
- Parts
- Service Garage
- M 7372 H A Ross Manager res

M6415 FOSTER & FOSTER Funeral Directors

M1230 (Successors to Harrison & Foster) Ambulance and Closed Cars
320 12th Ave. West

- M 2633 ALBERTA ICE CO LTD THE** Cash & Household Order Dept Centre St & 10th Ave
M 6897 Office and Warehouse
H 1314 Manager's res
 Ice Plant Keith (See Rural 3510—Call 94)
- M 6734 ALBERTA JOBBERS** 705 Centre St
M 1446 Alberta Life & Accident Ins Co Ltd 128 7th Ave E
- ALBERTA LIVE STOCK ASSOCIATIONS** Offices, Exhibition Grounds
M 2732 Main Office
M 2506 E L Richardson Secretary & Managing Director
M 7524 Grounds Superintendent res
M 5385 Alberta Loan Office Bloomenthal & Epstein 816 Centre St
- M 4622** Alberta Lumber Co Ltd 5th Flr Southam Chhrs
M 6958 ALBERTA MOTORIST Wm S Templest Editor 125a 6th Ave W
M 3457 Alberta New & Second Hand Store 150 9th Ave E
M 7826 ALBERTA NEWS CO 108 6th Ave W
M 2684 ALBERTA OPTICAL CO LTD
 THE Opticians 128 8th Ave W
M 2682 S A Bartlett Mgr res 3034 5th St W
M 3880 Alberta Pacific Consolidated Oils Ltd 200-202 Lougheed Bldg
- M 6661 ALBERTA PACIFIC GRAIN CO LTD** General Office 8 Flr Lancaster Bldg
 Private Branch Exchange connecting all Depts
 John I McFarland President and Managing Director
 C M Hall Secretary & Asst Manager
 Treasurer
 Office Accountant
 Superintendent (North Alberta)
 Superintendent (Central Alberta)
 Superintendent (South Alberta)
 Construction Department
 Claims Department
 Sales Department
 Commission Department
 Cashier
 Coal Department
 Terminal Elevator Department
- NIGHT CALLS AFTER 18 O'CLOCK—**
W 4810 President & Managing Director
M 2827 Secretary & Assistant Manager
W 2216 Superintendent North Alberta
M 1275 Superintendent Central Alberta
W 4642 Superintendent South Alberta
W 2447 Coal Department
- M 3596 ALBERTA PIANO CO LIMITED**
 Music Dealers 130 8th Ave W
W 1703 W H Ross Manager res
M 4225 ALBERTA PRODUCE CO LTD
 Butter Eggs & Poultry 437 10th Ave E
M 1406 W H Hendrix Manager res
- ALBERTA PROVINCIAL POLICE**
M 3284 General Office & Guard Room
M 4441 Inspector W Brankley Private Office
E 5805 Inspector W Brankley res 926 8th Ave E
M 7553 Alberta Robe & Tanning Co 409 6th Ave E
M 5187 Alberta Rooms (Frank Bourassa) 142 9th Ave W
- ALBERTA SANITARIUM** Bowness Park (See Rural 3506—Call 94)
M 1931 Alberta Shoe Hospital G W Pietto 2208 4th St W
M 3837 Alberta Signs W Dennis 710 1st St E
- M 6016 ALBERTA STEAM LAUNDRY CO LTD** 730 2nd Ave W
E 5661 Alberta Stock Yards Co Ltd
 Local 25 General Office
 Local 26 Manager E W Jones
E 5320 Alberta Stock Yards Hotel K Inamasu Prop Stock Yards
M 7434 Alberta Tailors 20-231 8th Ave W
M 6840 Alberta Tract Society S D A 305 Oddfellows Bldg
M 4805 ALBERTA TRANSFER J Nicol Mgr
 424 13th Ave E
- M 2380 ALBERTAN JOB PRESS** J Rockley
 Mgr Westminster Blk 10th Ave & 1st St E
L 1038 Manager's res 825 4th Ave NW
- M 9536 ALBERTAN PUBLISHING CO LTD** 229 8th Ave W
 Private Branch Exchange Connecting All Depts
 Business Office
 Circulation Dept
 Advertising-Display
 Want Ad Dept
 Editorial Dept
 Sporting Editor
 Society Editor
 Composing Room
 NIGHTS SUNDAYS AND HOLIDAYS
M 9538 Editorial Room
M 9537 Sporting Editor
M 9536 Business Office
M 9539 Composing Room
H 1777 Radio Broadcasting Station
- M 7778 ALDER ERNEST** Coal & Wood Dealer
 6th St & 8th Ave E
M 7779 Alder Ernest res 310 36th Ave SW Parkhill
E 5179 Alderton A S res 1332 11th Ave E
M 4433 Alemite Lubricator Co of Western Canada 216 12th Ave W High Pressure Lubrication Systems for Cars and Trucks
M 9607 Alexander Mrs B res 608 9th Ave E
M 4593 Alexander Mrs C A res 840 4th Ave W
- M 1312 ALEXANDER CIGAR STORE & NEWS STAND** S Dworkin Prop
 204 8th Ave W Wholesale and Retail
 Magazines Cigars Cigarettes and Tobaccos
M 9488 Alexander E H res 406 15th Ave E
M 2127 Alexander Geo D Vets Cartage & Storage 1209 1st St E
W 2258 Alexander J S res 1520 15th Ave W
W 4055 Alexander Oscar M res 536 14th Ave W
E 5875 Alexander W res 911 19th Ave E
M 4514 Alexander William res 3806 7th St W
M 4356 Alexandra Confectionery The O Wolovnik 706a 2nd St W
- M 4671 ALEXANDRA HOTEL** 8th Ave East
 Private Branch Exchange connecting all Rooms
M 4754 Alexandre A H res 625 Centre Ave NE
H 1123 Alford A C res 315 18th Ave NW
M 9336 Alford Miss E res 4 Rivermeade Apts
M 2766 Allan A res 330 12th Ave W
M 1284 Allan A res 132 6th Ave W
H 1861 Allan Alex res 322 7th Ave NE
M 4857 Allan E H res 3231 7th St W
M 5789 Allan H W res 3904 3rd St W Elbow Park
M 1523 Allan James res 14 College Apts
L 1791 Allan Jas A res 932 3rd Ave NW
M 7616 Allan John res 1313 Centre St
W 2247 Allan R res 2030 21st Ave W

M7070 AMBULANCE M1923

GRAHAM & BRENNEN LTD.

- H 1873** Allan Mrs R res 728 4th St NE
M 5815 Allan R P res 621 22nd Ave W
M 1699 **ALLAN THOBURN** Inspector of Tax
 ation Room 18 Customs Bldg
M 6898 Allan Thoburn res 602 13th Ave W
M 1390 **ALLAN & JOHNSTON** Customs House
 Brokers 70 Union Bank Bldg
M 3725 **ALLAN & JOHNSTON** Wood & Coal
 Dept 70 Union Bank Bldg
M 4738 **ALLAN'S J MEAT MARKET**
 Western Market
 Allard's Grocery (See Rural 112—Call 94)
M 4758 Allasia M res 425 1st Ave SE
L 1062 Allen A G res 114 10th St NW
W 2573 Allen A H res 2 Moxam Apts
W 4492 Allen A M res 1715 10th Ave W
W 4082 Allen A W G res Blk 30 Lincoln Park
W 4433 Allen G res 1516 13th Ave W
M 1636 Allen Glendower res 1023 7th Ave W
M 7862 Allen H J Can Nat Films 3 Princess Bldg
E 5299 Allen J res 820 22nd Ave SE
M 1257 **ALLEN DR. J L** Physician & Surgeon
 14 Alberta Blk
M 9323 Allen Dr J L res 924 Riverdale Ave
M 9865 Allen Loftus H res 3222 7-A St W
M 9850 Allen Mrs M I res 17 Crown Bldg
W 1841 Allen S res 209 Devenish Apts
W 2564 Allen T M res 1332 12th Ave W
M 5479 **ALLEN THEATRE** 119 8th Ave E
W 2615 Allen W A res 2227 20th Ave SW
M 9163 Allen W P res 604 14th Ave E
ALLEN & ALLEN Grocers 114 10th
L 1572 Credit Service Department St NW
L 2163 Cash & Carry Department
M 4411 **ALLEN & MASON LTD** Insurance
 Mortgages & Investments 414 Grain Exchange
W 2573 Residence A H Allen 2 Moxam Apts
W 4235 Residence J J Mason 814 Prospect Ave
W 2693 Allergoth M J res 2420 24th St SW
M 1141 **ALLIANCE ASSURANCE CO**
LTD of London England Lougheed & Taylor
 Ltd Agts 210 8th Ave W
M 6686 Allis-Chalmers Ltd (Canadian) cor 4 St W & 11 Av
W 4607 Allison Miss Florence W res 1342 14th Ave W
M 1320 **ALLISON H A** Law office 227a 8th Ave W
M 1079 Allison H A res 203 4th Ave W
M 1285 Allison Mrs L res 507 2nd St W
M 1979 Allison Lloyd res 1115 7th Ave W
M 5896 Allison S A res 117 26th Ave W
L 2112 Allison Thomas res 608 15th St NW Hillhurst
H 1196 Allison W H res 201 12th Ave NE
M 4983 Allott F W res 302 25th Ave W
M 7231 Allsop Miss E res 20 Marlborough Apts
L 2168 Allwood Harry res 2230 2nd Ave SW
M 1053 Almack F res 226 12th St NE
M 5706 Alport Edwin J res 308 14th Ave W
M 6966 Alspaugh H O res 1 Hope Blk
M 5306 Alston A res 310 18th Ave W
W 1468 Altadore Grocery G S Purdy Prop 1927 34th Ave
 SW
M 5173 Altman E H res 316 12th Ave W
M 9324 Alton R res 712 36th Ave W
W 1991 Alton Mrs Sullivan res 26 Norwood Apts
W 1321 Alward Frank B res 729 17th Ave W
M 4744 Amateur Athletic Union of Canada Alberta Branch
 E D Battrum Hon Sec. 219 P Burns Bldg
L 1605 E D Battrum res 617 1st Ave NW
W 4465 Ambry Mrs W J res 921 14th Ave W
M 2323 **AMBULANCE** Armstrong Funeral Home
 304 12th Ave W
M 7070 **AMBULANCE** Graham & Brennen Ltd
M 1923 351 13 Ave W cor 4 St W
M 3030 **AMBULANCE** A M Conover 1206 1210 1st
 St East
M 6415 **AMBULANCE AND UNDER-**
TAKING Foster & Foster successors to
 Harrison & Foster 320 12th Ave W
M 9999 American Auto Livery 815a Centre St
M 6094 American Cafe 321 8th Ave E
M 2588 **AMERICAN CENTRAL INSUR-**
ANCE CO 54 Canada Life Bldg
M 6263 American Consulate 210 P Burns Bldg
M 2045 American Drug Store The 127 8th Ave W
M 3749 American Hide & Metal Co 501 6th Ave E
M 6262 **AMES HOLDEN MCCREADY**
LTD Whol Boots & Shoes 303a-305 7 Ave W
M 7024 Fred M T Logan Mgr res
H 1211 Ames John res 1431 2nd St NW
H 1387 Amos Henry res 214 20th Ave NW
M 2778 Amphlett Major C E office 24 Marlborough Apts
M 6001 Amphlett Major C E res 16 Marlborough Apts
H 2440 Ancell Wm res 3302 3rd St NW
H 1467 Ancock Mrs E res 116 25th Ave NW
M 2031 Anderl John F res 836 5th Ave W
M 9745 Anderson A B res 602 12th Ave E
M 3337 **ANDERSON A MELVILLE** Opto-
 metrist & Optician (Chauncey's Jewelry Store)
 116a 8th Ave E
L 1301 Anderson Alex R T res 1804 24th Ave NW
M 5571 Anderson Apartments 18th Ave & 7th St W
 Private Branch Exchange connecting all Suites
 Vic Anderson Estate
M 2131 **ANDERSON BROS** Auto Exchange
 7th Ave bet Centre & 1st St E
M 2131 **ANDERSON BROS** Taxi & Livery
 7th Ave bet Centre & 1st St E
E 5861 Anderson Mrs C res 802 23rd Ave SE
M 2678 Anderson C J res 217 14th Ave E
M 9462 Anderson C M res 210 2nd Ave W
W 2125 Anderson D res 2026 34th Ave SW
M 3895 **ANDERSON D B** Flour & Feed 234
 7th Ave E
M 6037 Anderson D B res 1031 7th Ave W
H 2040 Anderson D Keith res 117 14th Ave NW
W 1053 Anderson D S res 834 19th Ave W
L 1613 Anderson David res 701 2nd Ave NW
H 1830 Anderson David res 915 19th Ave NW
M 2947 Anderson David res 915 8th Ave W
W 1397 Anderson David (J Eveleigh & Co Ltd) res 2911
 16th St W
M 5320 **ANDERSON DELIVERY CO**
THE 120 7th Ave W
E 5972 Anderson E Barber 1210a 9th Ave E
H 1771 Anderson E res 732 19th Ave NW
E 5247 Anderson E E res 54 New St
M 4108 **ANDERSON E J** Optometrist & Optician
 224 8th Ave W
M 6786 Anderson E J res 330 39th Ave W
H 2011 Anderson E M res 708 4th St NE
L 2264 Anderson F res 836 Boulevard NW
W 4720 Anderson Mrs Florence res 3006 15th St W
E 5574 Anderson Frank res 1040 19th Ave E
E 5871 Anderson G res 1012 19th Ave E



Dominion Coal Co. Ltd.

DISTRIBUTORS OF NEWCASTLE COAL

710 First St. E.

M7010

- M 3059 ANDERSON DR G A** Physician office & res 126 6th Ave W
- E 5192** Anderson G M res 1036 9th St E
- M 4542** Anderson Geo A res 1320 3rd St E
- M 5837** Anderson H J res 105 Mission Rd Parkhill
- M 4399** Anderson J A res 527 1st Ave W
- W 2926** Anderson J J res 811 13th Ave W
- M 7158** Anderson J J (OPR) res 345 19th Ave W
- M 7412** Anderson J V res 908 Sifton Boulevard
- W 1153** Anderson James res 1524 15th Ave W
- M 1398** Anderson James res 108 25th Ave W
- W 1373** Anderson James T res 1731 25th St W
- W 1548** Anderson John H res 812 16th Ave W
- W 4234** Anderson John L res 1531 26th Ave W
- L 1477** Anderson John Marshall res 604 1st Ave NW
- H 2130** Anderson L R res 215 3rd Ave NE
- H 1545** Anderson M V res 522 21st Ave NW
- L 1184** Anderson N res 318 7th St NW
- W 4128** Anderson O G Prop Huntly Apts 817 15th Ave W
- H 1181 ANDERSON PLUMBING CO**
135 16th Ave NW
- H 1545** M V Anderson Manager res
- M 5242** Anderson R res 809 3rd Ave W
- M 3798** Anderson R R res 218 5th Ave W
- W 2292** Anderson R S res 1913 26-A St W
- M 9254** Anderson T N res 617 3rd Ave W
- M 9313** Anderson V res 5 Bell Blk
- W 2820** Anderson W res 1040 14th Ave W
- H 1058** Anderson W B res 220 21st Ave NW
- M 1985** Anderson W G res 119 Mission Rd Parkhill
- L 1206 ANDERSON & SHARP** Plumbing
142a 10th St NW
- L 1301** Alex R T Anderson res 1804 24th Ave NW
- H 1220** Andrew Albert res 464 22nd Ave NW
- H 2307** Andrew G H res 113 22nd Ave NE
- M 9133** Andrew H C res 825 Riverdale Ave
- W 2793** Andrew James res 2237 33rd Ave SW
- M 7354** Andrews C P res 133 14th Ave W
- L 1820** Andrews J res 2324 4th Ave NW
- M 3899** Andrews James res 605 Lougheed Bldg
- M 6293** Andrews W H res 511 17th Ave W
- L 2305** Andrus Mrs O W res 0926 1st Ave NW
- M 7463** Anglo-Indian Oils Corporation Clarence Blk
- W 2034** Angow The Misses res 1219 16th Ave W
- M 1044** Angus Malcolm R res 2012 2nd St W
- E 5796** Annable J H res 2020 8th Ave E
- M 5821** Annable W D res 506 22nd Ave W
- W 1251** Annand E res 2136 18th St W
- M 6942** Annand S A res 905 4th Ave W
- W 2980 ANSELL & HODGSON** Painters & Paperhangers 1608 14th St W
- M 4206 ANSLOW H T** Auto Top Builder & Upholsterer 129 3rd Ave E
- H 1072** H T Anslow res 344 7th Ave NE
- H 1515** Anstie Mrs Winifred res 827 20th Ave NW
- H 2161** Anthony Fred res 206 34th Ave NE
- M 4973** Anthony G A res 312 12th Ave W
- M 4540** Antliff A res 118 13th Ave W
- E 5486** Apperley A res 2301 6th St E
- L 2063** Appleby Rollit res 427 13th St NW
- L 2296** Appleton R res 221 15th St NW
- M 2816** Apwood Mrs May res 539 11th Ave W
- M 3879** Arbogast C S res 226 25th Ave W
- E 5558** Arbuckle Mrs A res 1330 9th Ave E
- M 5472** Arcade Confectionery 211 8th Ave W
- M 4374 ARCADE TEA & COFFEE DEPT**
Whol & Retail 1325 1st St W
- ARCADE THE** 126a 8th Ave W
- DEPARTMENTS
- M 1701** Bee Hive Staple Dry Goods
- M 4452** The Children's Department
- M 1977** The D J Moore Co Ltd Ladies' Ready to Wear
- M 4488** Lay's Silks and Woolens
- M 3868** Madame Lothian Beauty Parlor
- M 1488** Manager's office (W A Tuck)
- M 4114** Archer F B res 3437 7th St W
- H 1425** Archer W H res 640 18th Ave NW
- M 6798** Archibald A G res 3614 7a St W
- L 1561** Archibald R H res 2736 Boulevard NW
- L 2489** Archibald R W Plumbing & Gasfitting 1123 5th Ave NW
- M 6686** Architectural Bronze & Iron Works Canadian Allis-Chalmers Ltd cor 4th St & 11th Ave W
- M 3916** Ardern Wm res Lansdowne Ave & 8th St W
- M 5096** Ardley Hardite Collieries Ltd 122 8th Ave W
- L 1371** Argue Rev A B St Paul's Methodist Parsonage 425 12th S. NW
- W 4748 ARIS** (The Tire Man) 1517 8th St W
- H 1875** Arlidge A res 224 5th Ave NE
- M 9198** Arlington Grocery W G Roberts Prop 513 2nd St W
- M 2667** Arlington Hotel A H Robert 6th Ave & 2nd St W
- M 5376** Armitage Mrs F A res 323 11th Ave W
- H 2047** Armitage Geo res 239 15th Ave NW
- H 1061** Armitage James R res 419 2nd St NE
- M 5324** Armitage, The Tailor, 49 Elma Blk
- M 7044** Armstrong C L res 1131 8th Ave W
- M 2702** Armstrong Miss D Dress & Mantle Maker 21 Mackie Blk
- W 2003** Armstrong Miss D F res 4 Acadia Apts
- W 4261** Armstrong Mrs Elizabeth res 1217 9th St W
- M 2323 ARMSTRONG FUNERAL HOME**
304 12th Ave W
White Ambulance & Undertaking
- M 2614** Office and Long Distance
- W 4195** Guy O Armstrong res 1813 8th St W
- M 5637** M B Armstrong res 1905 2nd St W
- M 5302** Armstrong Garage 119 12th Ave W
- M 5490** Armstrong Dr J M Phys & Surg 315 Alberta Cor
- M 6275** Armstrong Dr J M res 4240 6th St Elbow Park
- L 1353** Armstrong Jas res 1440 Boulevard NW
- M 9285** Armstrong Mrs M A res 1214 1st St E
- M 9286** Armstrong R res 75 6-A St W
- E 5842** Armstrong R res 2134 15th St E
- L 1723** Armstrong R res 1224 Boulevard NW
- M 7760** Armstrong Miss Thelma res 604 7th Ave E
- L 1888** Armstrong V A res 902 1st Ave NW
- M 3509** Armstrong Col W C res 1919 2nd St E
- M 7547** Armstrong W S res 1926 5 1/2 St W
- L 2309** Armstrong Wm W res 0902 1st Ave NW
- ARMY & NAVY VETERANS**
- Secretary's office
- M 5427** Club House 1115 8th Ave W
- E 5395** Arnew E res 1408 11th Ave E
- L 1364** Arnold E T res 817 3rd Ave NW
- W 4005** Arnold H J res 1601 15th Ave W
- M 6367 ARNOLD J S** Rental and Insurance
Agent 204 Grain Exchange
- W 1410** Arnold J S res 823 15th Ave W
- M 9621** Arnold John res 325 37th Ave SW
- M 6718 ARNOTT O C CO LTD** Bond Dealers & Investment Bankers Royal Bank Chbrs
O C Arnett res
- M 2012** Arscott Geo res 1233 13th Ave W
- W 2465** Arsneault Miss Rene 8 Devenish Apts
- W 2030** Arsneault Miss Rene 8 Devenish Apts
- M 4080 ART SHOP THE J W Booth** 237a 7 Av W

**For Long Distance Rates
and Points in Other Districts**

**See Pages 9 & 10
or Call "LONG DISTANCE"**

**USE THE
CLASSIFIED
BUSINESS
DIRECTORY**
(PINK SECTION)

- M 4883 **ART SIGN CO** Howell & Roberts 1114a
W 2909 Residence 1st St W
- L 2477 Arundell W R res 314 14th St NW
- M 7789 Asbury W res 409 8-A St NE
- L 1938 Ash Geo res 704 2nd Ave NW
- M 4557 Ash George E res 711 11th Ave W
- M 3101 Ash-Temple Co Ltd The Dental Supplies 1004-5-6
Herald Bldg
- H 1252 Ashcroft Henry res 239 20th Ave NW
- W 2114 Ashcroft Joseph W res 1312 17th Ave W
- M 5555 **ASHDOWN THE J H HARD-
WARE CO LTD**
Private Branch Exchange connecting all Depts
Wholesale Office & Warehouse 240 11th Ave W
Office
- M 5559 J B Jenkins res 3214 14th St W
- W 4180 Thos S Blanchfield Credit Mgr res 814 16 Ave W
- W 1195 H G Morrison General Mgr res 343 14th Ave W
- M 5728 RETAIL STORE 110 8th Ave W
NIGHT CALLS—
- M 5555 Hardware & Cutlery
- M 5556 Sporting Goods
- M 5557 Paint & Glass
- M 5558 House Furnishings
- M 9382 Ralph W Patterson Mgr res 517 19th Ave W
- H 1022 Ashley F N res 464 19th Ave NW
- H 1095 Ashmead Albert F res 1502 Centre St N
- M 4064 Ashton T H res 535 11th Ave W
- H 2369 Askew E L B res 812 20th Ave NW
- M 7647 Asling W F res 119 2nd Ave E
- L 1401 Aspden Geo Sr res 824 3rd Ave NW
- L 2252 Aspden Geo res 329 9-A St NW
- L 2019 Asselstine E B res 308 11th St NW
- M 9577 Associate Physicians & Surgeons 140 6th Ave W
Private Branch Exchange connecting all offices
D S Macnab M.D., F.A.C.S.
W A Lincoln M.D., C.M., F.R.C.S. (Eng)
A E Aikenhead M.D.
J Scovil Murray M.D., C.M.
G D Stanley M.B.
W S Quint M.B., B.Sc
F E Sandercock D.D.S. (Dentist)
- M 3715 **ASSOCIATED CHARITIES** 703 3rd
St E
- M 9235 Associated First National Pictures 314 8th Ave E
- M 2715 **ASSOCIATED MORTGAGE IN-
VESTORS** 612 Grain Exchange
- H 2290 J H Maguire Insp res 631 11th Ave NE
- W 2092 James Maguire Mgr's res 1613 13th Ave W
- M 9972 Astell Ernest G res 340 20th Ave W
- M 3408 Astley Edwin M res 3044 2nd St W
- W 1490 Atherton John res 2611 16th St SW
- L 1616 Atherton Joseph Foreman Plumber C P R res 304
10 1/2 St NW
- H 1172 Atherton W R res 710 18th Ave NW
- M 6167 Athey C W Prov Mgr Can Hdw & Implt Undrs
504 Maclean Blk

- M 5396 Athey C W res 402 38th Ave W
- M 3117 Athletic Billiard Parlor 128a 8th Ave W
- M 5275 Athletic Cigar Store 817a 1st St E
- M 2970 Atkins Miss A res 734 8th Ave W
- E 5950 Atkins J A res 1634 15th St E
- M 6593 Atkinson Mrs A E res 1027 7th Ave W
- M 2878 Atkinson Miss Eugenie A res 6 Rossmore Apt.
- M 4930 Atkinson Mrs Evelyn res 540 12th Ave W
- M 3543 Atkinson Mrs F G res 204 1st St W
- M 9104 Atkinson G E res 1314 1st St E
- W 4691 Atkinson J T res 1745 13th St W
- M 6592 Atkinson Dr P G res 3235 7-A St Elbow Park
- W 4963 Atkinson W H res 1833 18th St W
- M 2980 Atkinson & Hawkshaw Drs Dentists 815 Herald Bldg
- M 1486 Atlantic Cafe 315 8th Ave E
- M 2736 **ATLAS ASSURANCE CO LTD**
O E Tisdale Agent 604-605 Herald Bldg
- M 4621 Atlas Lumber Co Ltd 5th Floor Southam Chambers
- M 6977 **ATTREE MISS GLADYS** Dance
Studio 403 8th Ave W
- H 1818 Attridge A res 1319 2nd St NW
- E 5930 Attwood R T Livestock Sales Supt United Grain
Growers Ltd Alberta Stock Yards East Calgary
- M 6848 Attwood R T res 326 20th Ave W
- M 4410 Augade Madame A res 802 8th Ave W
- W 4164 Auger A R res 932 18th Ave W
- L 1716 Auld Ben D res 0916 1st Ave NW
- M 2164 **AULD DR J W** Specialist in Genito-Urinary
Diseases 212 Dominion Bank Bldg
- M 5827 Auld Dr J W res 624 26th Ave W
- M 3281 Aull Dr E Surgery 5-205 12th Ave W
- M 2802 Aull Dr E res 233 12th Ave W
- M 2435 **AULTMAN & TAYLOR MCHY
CO THE** V L Anderson Mgr 902 9th Ave W
- M 5252 Austin Arthur G office 41 Elma Blk
- M 1757 Austin Arthur G res 318 14th Ave W
- M 9868 Austin E res 2434 1-A St E
- H 1874 Austin E A res 322 6th Ave NE
- H 1623 Austin J P res 228 29th Ave NW
- M 7376 Austin John H res 1414 Centre St S
- H 2087 Austin John R res 234 4th Ave NE
- W 4435 Austin R E res 1311 12th St W
- H 2437 Austin Roy C res 425 16th Ave NE
- M 6958 **AUTO CLUB** Information Bureau 125a
6th Ave W
- M 3066 **AUTO SUPPLY & REPAIR** 1208a
1st St W
- M 3545 **AUTO TAXI & LIVERY SERVICE**
J J Reedy Prop 2nd Ave & 6th St W
- W 4748 Auto Tire Vulcanizing Works The 1517 8th St W
- M 5282 **AUTO WRECKERS & SALVAGE
CO** Geo S Wayman Mgr 938 4th Ave W
- M 4050 **AUTODROME LTD THE** 135 7th
Ave E
- M 3182 Manager & Sales Dept
- M 7712 Avenue Cigar Store & Barber Shop The 233 8 Av W
- L 2054 Averill F P res 2022 2nd Ave NW
- L 1360 Avery George res 746 Blvd NW
- W 1224 Avis G res 830 18th Ave W
- W 1390 Awde I W res 1501 Scotland St
- M 3920 Axton G W res 523 21st Ave W
- M 3861 Ayer J C res 1914 5th St W
- M 4459 Aylesworth A P Flooring 637 11th Ave W
- M 3850 Aylesworth Mrs R E Smith res 305 Centre St
- M 1427 Ayling E H res 818 36th Ave W
- L 2301 Ayres F res 1124 5th Ave NW