

KING GEORGE HOTEL TAXI SERVICE

DOMINION TAXI SERVICE

M3362

TAXI

M7777

CE
CO.
24 HOU
-MOTOR
McLAUGHLIN CARS

TAXI
M. 1582
M. 3990



PALLISER
HOTEL
AUTO & TAXI-CO
ROBERT WARE, PROP.

TAXI

M3333
M3335

OFFICIAL
**TELEPHONE
DIRECTORY**

SEPTEMBER, 1922

CALGARY
AND DISTRICT

(FOR POINTS IN OTHER DISTRICTS CALL "LONG DISTANCE". See Pages 9 to 12)

CALGARY **EMERGENCY CALLS** CALGARY

Fire, M1197; Police, M6681

CALLS FOR TELEPHONE SERVICE

Information, 92; Trouble, 93; Rural, 94
Long Distance 0

DESTROY ALL OLD DIRECTORIES

M831

the way to satisfaction is the way to the "Bay"
Hudson's Bay Company

M831

THE ONE COMPLETE OUTFIT

The R-1000

Radio Telephone Receiving Set

Can be purchased complete or Unit by Unit, has the famous R 215 A "Peanut" Vacuum Tube, Copperweld Antenna Wire and many other new and desirable features.

Its wave length from 200 to 600 meters covers the full range of local distant Amateur sending, Canadian and American Broadcasting, Shipping, Stock and Weather Reports, Official Time, etc.

Full description and prices are in our Bulletin No. 1000 Ask your dealer for a Copy. If he hasn't one, phone or write our nearest house.

CONSISTS OF

- 1 No. R1 Short Wave Tuner and Detector Unit.
- 2 No. R5 Amplifier Units.
- 1 No. R6 Double Head Set, 2500 ohms.
- 1 No. R650 Aerial System
- 3 No. R215-A "Peanut" Valves.
- 1 No. R180 Northern Peanut Valve Filament Battery.
- 1 No. R90 45 Volt Plate Battery.

Northern Electric Company

LIMITED
Calgary, Alberta

Impelling Interviews

Your Customer may refuse or neglect to answer your letter—

He may refuse to interview you when you call—

Your advertising literature may be buried in the waste-paper basket—

BUT—He will listen when you Telephone!

**Use Long Distance
CHEAP—QUICK—IMPELLING**



Calgary Addenda

Alterations and Additions Received Since Going to Press
Too Late for Classification

A

- M 2307 Adamson J S & Co Whol Fruit & Pro 313 8th Ave W
L 1270 Adecock J E res 411 13th St NW
W 4751 Aird A res 1530 17th Ave W
M 9388 Alberta Livery & Transfer W D MacKay 508 8th Ave W
M 3725 Allan & Johnston Fuel & Coal Dept 6th St E & 9th Ave
W 4443 Allen W P res 1221 16th Ave W
M 6966 Alspaugh H O res 1 Hope Blk
M 3749 American Hide & Metal Co 428 6th Ave E
L 1613 Anderson David res 701 2nd Ave NW
L 1184 Anderson N res 318 7th St NW
W 2465 Arscott Geo res 1233 13th Ave W
L 2019 Asselstine E B res 308 11th St NW
L 1360 Avery George res 746 Blvd NW

B

- W 4293 Backhouse Geo res 1732 7th St W
E 5278 Bacon J res 37 Seven Oaks Court
M 3515 Bamlett Robt res 230 40th Ave W
E 5028 Banks James res 1315 8th Ave E
W 1444 Barker Frank J res 4 Sandringham Apts
M 2362 Barnes C A res 223 14th Ave W
H 1213 Bateman W L res 1620 3rd St NW
M 1717 Bawlf N Grain Co Ltd The 609 Lancaster Bldg
M 1091 Long Distance Only
L 1794 Baxter A W res 307 10-A St NW
L 1579 Bayly Maxwell res 554 9th Ave NW Sunnyside
M 5765 Begg B D res 1909 2nd St W
M 5088 Belisle Mrs P L res 2211 2nd St W
W 2089 Bennett H N res 8 Huntly Apts
M 7916 **BENNETT HANNAH & SAN-FORD** Barristers Solicitors etc 600-602 Lancaster Bldg
Private Branch Exchange connecting all Depts
M 3942 Hon. R B Bennett K.C. Private Office
M 3374 Alexander Hannah res 3633 7th St W
M 3864 P L Sanford res 217 Roxboro Rd
M 2112 O H Might res 140 2nd Ave W
M 4569 E J Chambers res 237 14th Ave W
M 9986 Bibby John res 512 5th Ave W
M 2413 Big Valley Collieries Ltd cor 6th St & 7th Ave E
H 1581 Biggar Mrs C P res 427 8th Ave NE
E 5427 Billingham H res 10 Seven Oaks Court
L 2469 Birrell D G res 1523 23rd Ave NW
M 9072 Black A H res 19 College Apts
M 2133 Blair A res 518 18th Ave W
H 1719 Bodie James res 212 31st Ave NE
H 1312 Bolderson E H res 436 12th Ave NE
L 1141 Bounds F H res 619 1st Ave NW
W 2295 Bowlen J J res 1225 19th Ave W
L 1379 Boyce Alex res 647 3rd Ave NW
M 7246 Boyle Mrs Dennis res 1506 4th St E
M 4364 Bradley's Shoeteria 221 8th Ave E
H 1716 Bradshaw T C res 424 9th Ave NE
W 4350 Bray C res 1815 14-A St W
E 5372 Bricken J res 1117 9th St E
M 3499 British Columbia Refining Co Ltd 1604 9th Ave W
L 1470 Broadfoot R res 413 9½ St NW
W 1581 Brooks Capt W M res 1820 15th St W

- M 2866 Brophy Mrs Warburton res 423 Underwood Blk
M 3498 Broughton Fred res 907 6th Ave W
L 1362 Broughton H res 707 4½ St NW
W 2850 Brown Lawrence res 2421 25-A St W
M 3211 Buchan E S res 8 Avonlea Apts
M 3421 Buchner W Coal Dlr 6th St E & 8th Ave
M 5784 Bulman Miss D res 317 22nd Ave W
M 9965 Burger Murray S res 3 Rivermeade Apts
H 1580 Burns F G res 420 20th Ave NW
W 1918 Buxton W J res 536 15th Ave W
L 1369 Bye S H res 208 16th St NW

C

- M 6891 C N R Confectionery H Cheal 1420a 1st St W
M 6998 Calgary Realty Co Ltd Cy B Munro Mgr 817 1st St E
W 2035 Callaway Norman M res 1503 12th Ave W
M 3642 Cameron D A res 333 21st Ave W
M 2060 Campbell Miss J Dressmaking 18 Mackie Blk
W 1255 Campbell W res 514 15th Ave W
M 4823 Canadian Distributors Ltd 644 1st Ave NE
M 3973 Canary Transfer 1314a 1st St W
H 1247 Cargo Mrs Mabel res 125 20th Ave NE
L 1768 Carlin Chas res 6 Phyllis Apts
L 1749 Carmichael Mrs H res 310 11-A St NW
M 2310 Cartwright Mrs Ellen res 804 4th Ave W
L 1329 Cass R L res 17 Gordon Blk
M 4739 Cassaday Mrs W W res 730 3rd Ave W
M 3398 Cayley H res 3912 1-A St SW Parkhill
M 6220 Chamberlain J J res 612 22nd Ave W
H 1672 Chapman L H res 910 19th Ave NW
L 1447 Chenery E B res 1437 18th Ave NW
M 9929 City Hall Garage & Welding Wks 7th Ave & 2nd St E
W 1496 Clark Geo B res 1127 13th Ave W
H 1516 Clark James res 515 21st Ave NW
M 9362 Clark James P res 417 12th Ave E
W 2099 Classic Shoe Repair 1438 17th Ave W
L 1440 Cockcroft Chas res 1634 3rd Ave SW
M 9338 Coffee Shop Cafe 814a Centre St
M 6825 Coffin Mrs Mary E res 322 18th Ave W
M 4265 Cohen E res 510 14th Ave E
M 1007 Cohn Max res 421 5th Ave E
M 2973 Coleman Dr Chas E Phys & Surg 303 Alberta Cor
M 3853 Colvin W D res 11 Marlborough Apts
L 1891 Conn F J res 1610 2nd Ave SW
W 4391 Co-operative Coal Yard 2020 10th Ave W
M 6130 Cosgrove Mrs Leo res 8 Aull Blk
H 2432 Costigan Mrs A R res 1630 7th St NW
M 1789 Coull E W res 221 6th Ave W
M 6223 Coulter J res 218 18th Ave E
W 1326 Coultts J B res 1607 19th Ave W
H 1728 Crescent Heights Baptist Church 11 Ave & 4 St NW
M 3409 Croall R res 230 4th Ave E
W 2022 Croll R M res 1007 14th Ave W
M 1017 Cross Miss M res 308 Underwood Blk
E 5812 Cruickshanks Geo Nose Creek nr C P R Headgates
E 5037 Crumblehulme F res 2347 6th St E
H 1748 Cumming S I res 4 Kinne Blk
M 5989 Cunningham H res 117 Young Blk
M 7663 Currie Miss Bertie L res 15 Healy Apts
E 5807 Currie Miss A res 1927 6th St E
W 1418 Curtiss Clifford J res 2213 17th St SW
M 7028 Cyr A R Grocery 337 17th Ave W

Calgary Addenda

D

M 1591 Dash Arthur Shoemaker 815 Centre St
M 2024 Davis W C Retail Coal Merchant 405 L & L Blk
M 6272 Dawe E C res 5 Campbell Apts
M 3780 Day Miss H res 9 Westminster Blk
W 1628 Dennison M A res 526 17th Ave W
M 1396 Despina Bros Builders & Contrs 2506a 4th St W
L 1370 Devine Jas A res 922 4 1/2 St NW
M 1220 Diamond Liquor Co 1 642 1st Ave NE
M 5316 Dichmont John res 330 23rd Ave W
M 3495 Doherty Frank res 507 8th St W
M 7233 Dominion Brokerage Co 313 8th Ave W
H 1998 Donaldson George res 2517 Centre St N
W 2541 Donovan Mrs P res 206 Devenish Apts
H 1766 Douglas Jack res 1113 20th Ave NW
M 9192 Druxerman H res 3836 6-A St W
M 4537 Ducloy C L res 512 13th Ave E
W 1009 Duncan J L res 203 Devenish Apts
H 1931 Dunn J T res 313 4th Ave NE

E

M 5696 Eagland F J res 4720 Burnsland Ave
E 5303 Edmonds R res 1104 Bellevue Ave E
M 9778 Ellis Dee res 216 Beveridge Bldg
M 3814 Ellison D W res 315 13th Ave E
M 6791 Estin Mrs B res 304 3rd Ave E

F

L 2279 Fairley Joseph res 819 1st Ave NW
W 2605 Faile R W res 1316 14th Ave W
L 1690 Farquharson James res 0934 Blvd NW
W 1521 Featherstone H W res 1335 14th Ave W
W 1774 Ferguson A F res 1515 19th Ave W
M 1602 Ferguson J T res 1 Marlborough Apts
H 1207 Ferngren Mrs A E res 434 19th Ave NW
H 2313 Fields Alfred J res 520 11th Ave NE
H 1671 Fish J K res 1002 1st St NW
M 4209 Fitzhardinge-Rose Mrs res 7 Georgian Court
W 2744 Flick I C res 1838 34th Ave SW
W 2055 Floyd Thos Groc & Confectionery 501 14th Ave W
M 4701 Fortier J A res 117 14th Ave E
M 9450 Fowler L res 1410 4th St W
M 5623 Fraser Thurlow res 434 11th Ave E
W 2137 Frazier J B res 1107 15th Ave W
M 9619 Freeman Mrs B res 203 Alta Loan Bldg
M 7707 Frico Stores—Store No 3 130 7th Ave E

G

H 1960 Galloway Frank H res 224 20th Ave NE
M 6410 Galloway's Specialty Shop 134 7th Ave W
L 1620 Gaunt Chas res 5 Vendome Blk
M 6775 Geary G G res 21 Lorraine Apts
M 4804 Georgeson W res 226 5th Ave W
M 2206 Gerrard W G res 18 Argyle Court
M 5693 Geschiet A res 4025 5th St W
M 6920 Gibb George res 507 22nd Ave W
M 5266 Giles Mrs A res 24 Edge Blk
W 4876 Gill Mrs Katie res 1719 College Lane
W 2864 Gill S A res 1610 15th Ave W
M 6254 Gillette John res 444 3rd Ave E
L 1172 Girling T E res 639 2nd Ave NW
W 4054 Gliddon Thomas L R res 1229 14th Ave W
W 2303 Glover A W res 336 Scarborough Ave
M 1708 Glover H R res 1016 7th Ave W
W 2993 Glover Hugh res 1603 15th Ave W
M 5672 Glover W J res 208 8-A St NE
M 4933 Goddard W res 808 4th Ave W
H 2451 Good J R res 1817 3rd St NW
M 6917 Gordley L res 101 Young Blk
M 3095 Gordon M res 423 7 1/2 St NE
M 4505 Gow Walter D Barrister & Solicitor 702 Herald Bldg
W 4664 Graham George res 1621 11th Ave W
M 1758 Grant W B res 4724 Macleod Trail
W 2750 Graves W res 1307 11th St W
M 2893 Green Clarence E res 1309 4th St E

M 5203 Green Hartwick res 611 6th Ave W
W 1565 Greene R W res 934 18th Ave W
W 1098 Greer Wm res 3521 15th St SW
M 9717 Gundry-White F S res 72 Thomas Blk

H

W 2053 Hackett Ernest res 1609 15th Ave W
W 1127 Hahn W M res 1814 32nd Ave SW
M 9337 Hammond Ed res 409 5th Ave W
W 1179 Hammond Miss M res 2-1005 14th Ave W
W 4788 Hanning J E res 2744 14th St W
W 1370 Harbidge Fred res 2027 33rd St SW
W 1633 Harley John A res 117 Devenish Apts
W 2859 Harris Melissa res 1709 11th Ave W
H 1324 Harris R H res 1603 2nd St NW
L 1380 Harris Miss V res 307 11th St NW
W 2806 Hart J res 4 Devenish Apts
L 2302 Hart Lloyd res 1207 2nd Ave SW
M 9659 Hashman B res 404 5th Ave E
H 1571 Hassard Harry res 202a 16th Ave NE
H 2076 Hassard A C res 333 7th Ave NE
M 1454 Hattel W H Eyesight Specialist 17 Alberta Blk
W 2562 Hayhurst J res 1927 26-A St SW
M 1686 Haynes I res 2315 Centre St
M 3732 Hayward Mrs Harry res 420 17th Ave E
L 1439 Hazelton Edward res 223 11-A St NW
W 4031 Heighton A E res 1316 12th Ave W
M 1422 Henderson Mrs Sadie res 514 9th Ave E
M 9283 Henderson W S res 3909 5th St SW
W 4993 Herring J res 934 14th Ave W
H 1609 Hewitt G J res 232 5th Ave NE
H 1585 Hickey C H res 1417 3rd St NW
W 1086 Hickman W B res 1306 8th St W
M 3042 Hicks J H Tailor 2 Mackie Blk
M 7564 Higgin Clifford Voice Specialist 403 6th Ave W
M 1268 Hoar Harvey E res 40 Montrose Place
M 3229 Hodgkinson B A res 221 27th Ave SE
W 4640 Holmes Mrs E res 1816 16th St W
M 6573 Holmes N S res 305 18th Ave W
H 1130 Holby A V res 1404 1st St NW
W 1776 Hoppins H G res 4 Bridgen Blk
W 2513 Horne Harold Edward res 2634 34th St W
M 5014 Howden & Hudgings Gen. Electricians 711 1st St E
W 1515 Hoyt R H res 829 19th Ave W
H 1412 Hudson A V res 728 4 1/2 St NE
W 4641 Hughes Newton E res 1515 12th Ave W
W 1582 Hunter G E res 1326 16th Ave W
H 1255 Hunter Maurice res 810 3rd St NE
H 1713 Huss M res 428 19th Ave NW
M 7686 Hutchings J G res 3610 6-A St W
L 1460 Hutchinson E res 502 Blvd NW

I

M 3034 Ideal Tailor Shop Frank Logosz 501a 4th St E
M 9433 Ingraham Geo F res 534 Loughheed Bldg
M 4023 Irvine G res 724 6th Ave W

J

W 1004 Jackson Earl res 1921 28th St W
H 1395 Jagoe S muel res 312 13th Ave NE
M 9472 Jenner L J res 2 Wellington Apts
M 4844 Jennings P J res 1139 Riverdale Ave
M 7295 Johnson Frank res 225 Mission Road
E 5331 Johnson H T res 3 Carson Blk
M 9178 Johnson M res 432 14th Ave E
W 4681 Johnstone Alec res 1604 10th Ave W
W 1489 Johnstone C E res 335 Sharon Ave

K

M 5671 Kay John res 521 12th Ave E
E 5062 Kelly W J res 1142 9th St E
L 2061 Kennedy David res 704 1st Ave NW

Calgary Addenda

M 2385 Kester W B res 1710 5th St W
M 2149 Keyes A M res 619 3rd Ave W
E 5425 Kilpatrick J res 2529 17th St E
W 2681 King Arthur Garnet res 2628 29th St W
W 1884 King S Ernest res 33 Lorraine Apts
M 3167 Kinsey A H res 114 5th Ave E
M 6510 Kurtzberg M res 413 8th Ave E

L

W 2459 Lancaster Thomas H res 1114 14th Ave W
M 2496 Lander A C res 18 Thomson Blk
M 4568 Laurie John Tailor & Dry Cleaner 816 2nd St E
E 5862 Laurie Robert res 1929 7th Ave E
L 1290 Lea Gas Burner Co 146 10th St NW
E 5003 Le Drew M res 1 Carson Blk
W 1749 Leggat Mrs J B res 2136 16-A St W
L 1559 Leishman James res 229 11th St NW
M 5856 Lewis B C res 216 2nd Ave W
M 6943 Lewis Mrs I M res 6-1913 5th St W
M 3110 Little J J B & W T M Ins Agts 510 Maclean Blk
M 4214 Logue Alexander res 319 David Blk
M 9360 Lorsback I M res 921 6th Ave W
M 7060 Loucks Mrs M res 601 7th St W
M 9983 Louie Harry res 306 Alta Loan Bldg
W 2248 Luck L H res 1017 15th Ave W
M 7473 Luft C J res 423 7th St NE
M 3711 Lukens T R res 426 14th Ave E
W 4153 Lund Rev T F res 1717 31st Ave W
M 9150 Lynn C W res 1036 6th Ave W

M

M 6937 Mac & Mac Boys Store 210 7th Ave W
M 3264 MacDonald Jack res 130 26th Ave W
H 1727 MacDonald Mrs A res 330 3rd Ave NE
M 9876 MacDonald's (Dick) Cafe 713 Centre St
M 7384 Macdonell A J Insurance 509 Grain Exchange
M 5122 MacLennan Miss A res 8 Douglas Blk
M 6533 MacLennan A M res 16 Thomson Blk
W 1979 MacTavish J A res 15 Houlton House
M 3643 Magill Mrs S res 1402 1st St W
M 5297 Male W J res 2426 1st St E
L 1350 Malthouse Mrs A H res 224 15th St NW
W 1289 Mann Jos res 11 Norwood Apts
M 2391 Manolson M F res 705 2nd Ave SE
L 1240 Margach G M res 218 11-A St NW
M 6054 Martin A D res 2405 3-A St SE
M 1820 Mason & Nutter Ltd Ins Agts Molsons Bank Bldg
W 2094 Masters Dr J res 910 16th Ave W
W 1466 McAulay E G res 940 19th Ave W
W 2931 McCollom Mrs F res 1530 16th Ave W
W 1002 McCrindle J A res 2325 10-A St W
E 5292 McCulloch David res 43 New St
E 5061 McCullough Miss A res 1113 8th St E
M 9217 McDaniell D P res 5 Wallace Apts
H 1685 McDermott L E res 426 20th Ave NW
M 4123 McDonald J J res 317 18th Ave W
W 1347 McDougall R res 1708 34-A Ave SW
M 4009 McFadden Clothing Co 332 8th Ave W
H 1161 McGaughy Joseph res 212 20th Ave NW
M 7439 McGee Dennis res 214 15th Ave W
M 1723 McGill & Dunne Barristers & Solrs 218a 8th Ave W
W 2774 McGillivray E A res 1924 33rd Ave SW
M 2785 McGillis A F res 14 Curtiss Blk
M 3956 McKay G A res 511 Alta Loan Bldg
M 1968 McKay Mrs Katharine res 615 22nd Ave W
M 7350 McKay R S res 1107 Riverdale Ave
M 5354 McKenna A res 6 Louise Apts
E 5747 McLaggan Mrs W E res 2006 8th Ave E
W 1158 McMillan D W res 2212 33rd Ave SW
W 1184 McMullen Mrs Claude C res 1029 19th Ave W
H 1504 McNabb Rev P res 241 20th Ave NW
M 5987 McNeill J C res 15 McNeill Blk
M 6945 McPherson D res 313 Underwood Blk
M 5053 McQuiston C B res 26 Lorraine Apts
H 1731 Miller W H res 519 23rd Ave NE
M 2746 Miller Wm M res 222 15th Ave W

L 2209 Milton Mrs J res 2129 5th Ave NW
M 2986 Mission Confectionery C Segal 2202 4th St W
W 2914 Moffat R H res 2121 17-A St W
M 2932 Moncrieff Peter A res 112 13th Ave E
H 1711 Moore George res 120 8th Ave NW
H 1309 Moore H E res 2 Hicks Blk
L 1136 Moore Rowland res 1209 Centre Ave NW
M 4216 Morach G res 613 1st Ave SE
M 9495 Moretti F M res 1 Bannerman Blk
M 9937 Morgan R E Real Est & Ins 204 Morgan Blk
W 2707 Morrison W G res 1510 12th Ave W
M 1382 Morse Mrs Mary A res 1208 3rd St E
H 2458 Morton E S res 1140 20th Ave NW
W 4573 Mount Royal Tea Rooms 1611 14th St W
M 6998 Munro Cy B Calgary Realty Co Ltd 817 1st St E
M 9823 Murphy Irene res 2 Strand Apts
M 9931 Murphy W M res 2204 1st St W
M 2470 Murphy's Barber Shop & Cigar Stand 810 Centre St
M 9628 Musgrave J I res 3-925 4th Ave W
M 4144 Musgrove Mrs H B res 420 15th Ave E
M 3851 Mutual Investment Co Ltd 409 Grain Exchange

N

W 1817 Naftel Paul res 2016 11th Ave W
M 1603 Nagler M res 106 4th Ave W
M 4943 Nancarrow W C res 121 13th Ave E
W 1743 Nease S res 9 Huntly Apts
W 2341 Nelson Mrs Ethel B res 907 13th Ave W
H 1094 Nevard H C res 1116 2nd St NE
M 3819 Nicholls A E res 636 12th Ave E
W 2991 Nickerson J G res 1730 11th St W
M 7531 Nicol George S res 606 Lougheed Bldg
H 1743 Nisbet M A res 316 9th Ave NE
W 1966 Noehren Criss res 940 17th Ave W
M 6569 Northern Grain Co Ltd The 710 Lancaster Bldg
M 9856 Novikoff L res 318 2nd St E
H 1377 Nutchey E res 915 18th Ave NW
M 6202 Nye Mrs T res 504a Underwood Blk

O

M 1886 O'Connor T J Barrister 235a 8th Ave E
M 9420 Oliver Miss Orlena res 104 4th St W
M 7452 Oliver S E res 4716 Macleod Trail
W 4642 Oliver T E res 915 18th Ave W
W 1572 Orr W W res 804 15th Ave W

P

M 2472 Palace of Eats Confect & Tea Rms cor 8th Ave & 1st St W
M 6269 Palm Confectionery James C Nielsen 411 8th St W
M 9303 Park Hugh A Jr res 406 Roxborough Place
H 2176 Parker Frederick res 333 2nd Ave NE
L 1046 Parker John res 1509 17th Ave NW
M 4150 Parmelee W H res 3029 3rd St W
H 1292 Paterson G C res 231 3rd Ave NE
W 4975 Patterson H A res 1640 15th Ave W
M 4274 Patterson J res 335 21st Ave W
E 5082 Pearce H res 1328 8th Ave E
M 1947 Pearce H J res 114 7th Ave E
M 3163 **PEERLESS CARBON COAL CO LTD** Bert Stringer Mgr 409 Grain Exchange
W 2555 Coal Yard 1016 11th Ave W
W 4390 Night Calls Bert Stringer Mgr res
M 3970 Perry M H res 1-125 15th Ave E
W 2632 Pettman Miss Alice M res 820 13th Ave W
L 1901 Phillips Leonard res 418 13th St NW
H 1725 Pickard Walter A res 544 Rosedale Crescent
M 7021 Pigot Mrs M res 3 Morasch Blk
M 9793 Pilkington Mrs M N res 101 City Hall Corner
W 2726 Pitt William res 1530 26th Ave W
M 3928 Pope F W res 7 Westminster Blk
W 1906 Popular Confectionery 1509 8th St W
M 7867 Powell Warren res 913 5th Ave W
W 2495 Powers H B res 1035 17th Ave W
M 1591 Practical Shoe Repair School 815 Centre St
E 5881 Price I res 2337 6th St SE

Calgary Addenda

R

H 1595 Rainer F J res 406 15th Ave NE
M 4734 Ramsay Bros & Co Ltd Biscuits & Candy Mfgs
 313 8th Ave W
M 3549 Ramsay James Sr res 828 3rd Ave W
L 1330 Ranger Mrs M K res 113 25th St NW
W 1690 Rankine T C res 5 Lorraine Apts
W 2233 Rapoport N Y res 1217 13th Ave W
M 7205 Raycraft Mrs H res 413 3rd Ave W
M 2381 Reed Dr E Hobart Surgeon Alberta Blk
M 7507 Reed Dr E Hobart res 320 17th Ave W
M 5234 Reliance Coal Co Ltd S T Mains Mgr 412 Lancaster
 Bldg
M 5681 Renouf J res 410 SA St NE
M 3650 Richardson R P of P Burns & Co res 3605 6-A St W
W 4747 Roberts H B res 816 20th Ave W
H 1522 Robertson J M res 442 13th Ave NE
H 1764 Rogers Clarence res 913 17th Ave NW
M 7610 Rogers James res 614 5th Ave W
W 2536 Rose D Albert res 1223 14th Ave W
M 3952 Ross A res 1 Westminster Blk
M 5235 Ross A H res 5 Douglas Blk
M 4590 Rudd W T res 7 Argyle Court
H 2027 Russell J R res 313 2nd St NE
M 3387 Russell J S res 6 Western Blk
M 2873 Russell W A B res 509 21st Ave W
M 5741 Ryan Geo res 20 Westminster Blk
M 2604 Ryan W res 207 Beveridge Bldg

S

H 1720 Sadler A res 715 5th St NE
M 9024 Sanders S res 127 6-A St SE
M 5362 Saphirstone Mrs Annie res 103 Judge Travis Bldg
W 1341 Schaefer Mario res 710 17th Ave W
M 5256 Scott Miss K res 528 Underwood Blk
M 5207 Seversen Otto res 517 5th Ave W
E 5763 Sewall O T res 1132 9th St E
M 9740 Sewell E A res 3604 Burnsland Ave
W 2816 Shantz W res 2517 18-A St W
W 2003 Shaw A W res 1529 12th Ave W
W 2353 Shaw C J res 823 14th Ave W
M 1965 Shaws Trading Post & Locksmiths 130 9th Ave W
M 3183 Shepard J res 18 Old Board of Trade Bldg 8th Ave W
H 1332 Shott T res 227 4th Ave NE
L 2023 Simington P res 306 13th St NW
L 1948 Simms A J res 925 4th St NW
H 1231 Singleton Andrew res 812 4th St NE
M 3233 Sinnott H A Barrister 405 P Burns Bldg
H 1315 Sketchley F V res 3808 1st St NW
M 3151 Slavin M res 532 8th Ave E
M 3236 Smith A C res 3 Bannerman Blk
H 1556 Smith A J res 117 12th Ave NW
M 4907 Smith Miss Cora B res 838 4th Ave W
M 6118 Smith E G res 2607 1st St E
W 2619 Smith F C res 1932 28th St SW
W 2813 Smith Frank res 1007 14th Ave W
M 1839 Smith Mrs G W res 1508 5th St E
W 2568 Smith H E res 4 Nelson Apts
M 6288 Smith J A res 409 14th Ave E
M 3177 Smith J A res 1137 6th Ave W
W 2170 Smith Phil res 1514 22nd Ave W
E 5949 Smylie Robert res 1021 17th Ave E
W 4864 Sorenson Mrs Laura res 627 15th Ave W
E 5452 Sparks Mrs F res 1227 9th Ave E
H 1380 Stagg L T res 911 17th Ave NW
W 1271 Standerwick H H res 1631 13th Ave W
M 9918 Stanford G E res 11 Louise Apts
H 1717 Starratt St Clair res 419 19th Ave NE
M 9353 Stevens A L res 37 Lorraine Apts
M 9671 Stevens J C res 210 25th Ave W
M 9301 Stewart F R res 218 10th St NE
W 2358 Stewart J A C res 1-1023 19th Ave W
M 2233 Stockton Dr F W res 8 Brennan Apts
L 1450 Stone Mrs Isabell res 516 7th Ave NW

H 2406 Storey Bertwyn res 810 4-A St NE
L 1339 Strange Joseph res 121 15th St NW
M 2396 Strathecona Export Co 408 3rd St E
M 6062 Streeting J E res 203 2nd St W
M 3163 Stringer Bert A Coal Operator 409 Grain Exchange
L 1449 Strong Mrs W A res 231 10-A St NW
W 4629 Summerby W L res 1507 12th Ave W
W 4863 Switzer F P res 1035 11th Ave W

T

W 2515 Tamblyn Lt-Col D S res 1035 12th Ave W
M 3838 Taxi Service Co 603 1st St W
L 2053 Taylor C res 114 16th St NW
L 1340 Taylor G S res 628 2nd Ave NW
W 1677 Telfer D A L res 326 Superior Ave
E 5378 Tetrault William A res 2536 16th St SE
W 2051 Thomas E W res 3 Nelson Apts
W 2151 Thomson W E res 201 Devenish Apts
L 2447 Tobias D res 451 12th St NW
H 2322 Tompkins L E res 920 2nd St NE
W 2230 Toone W O res 535 14th Ave W
M 2185 Trail A & Co Crispates 337 17th Ave W
M 9343 Tuskey W B res 2409 2-A St SE
M 7260 Tyler H J res 2415 2nd St SE

U

L 2041 Umpleby Thomas S res 1456 Blvd SW

V

M 1967 Vance Cora W res 205 Morgan Blk
M 7399 Vogue Millinery 803 1st St W
M 3020 Voss Bros Grain Elev Contrs & Bldrs 417 Lancaster
 Bldg

W

M 7795 Wagner Albert res 129 2nd Ave W
M 7432 Waites H G res 1 Cresco Apts
L 1490 Walker Thos L res 1027 2nd Ave NW
M 6178 Wallace J A res 831 4th Ave W
W 1159 Wallace James res 1528 11th Ave W
M 1253 Wallace McKenna Co Ltd Tobacconists Wholesale
 119 8th Ave E
W 1532 Walt S E res 1826 11th Ave W
E 5569 Ward T res 722 24th Ave E
H 1350 Wark J H res 920 4th St NE
M 4169 Warren J T res 3028 3rd St W
M 4370 Waters Mrs Margaret res 724 3rd Ave W
W 4092 Watkins W res 916 14th Ave W
M 4045 Webster Madame res 1120 2nd St E
H 1208 Weatherlake C C res 1106 18th Ave NW
M 1604 Western Furniture Mfrs 721-723 8th Ave W
M 3311 Wheelwright M S & Co Ltd Investment Securities
 518 Grain Exchange
E 5853 White Arthur res 2727 17th St E
H 1807 White C res 518 11th Ave NE
L 2067 White Mrs Robert res 1416 Gladstone Ave
M 3634 Whyte John res 4 Wellington Apts
W 1171 Williams A J res 1608a 14th St W
W 4723 Williams Mrs W P res 1719 33rd Ave W
W 4489 Willits L D S res 109 Devenish Apts
M 3401 Wilson R B res 21 Westminster Blk
W 2040 Wilson Capt W W res 1 Raby Apts
W 4543 Withell P J res 2116 16th St W
M 7241 Woodhouse W res 1 Hester Apts
M 9492 Woods G res 516 6th Ave E
M 4859 Woodward F res 4 Strathecona Blk
M 6919 Woolf J res 829 5th Ave W
L 1469 Wright Donald res 1913 21st Ave NW
H 1164 Wright W C res 427 16th Ave NE

Y

M 3511 Young H P res 2206 1st St W
M 5299 Young M H res 4 Aberdeen Apts

**For LONG DISTANCE RATES
See Pages 9 and 10**

Phones
M 1582
M 3990

TAXI

UNDERTAKERS
M7070

**GRAHAM, Mc CALL
& BRENNEN, LTD**

AMBULANCES
M7070

NUMBERS CALLED MOST FREQUENTLY OR NOT IN THE BOOK

[illegible]

Directory Advertising Brings Results

ALBERTA GOVERNMENT TELEPHONES

Schedule of Rates for Service

(Exclusive of Private Branch Exchange Equipment)

INSTALLATION CHARGES

A service connection charge covering a portion of the average cost of the initial expense of establishing service for new subscribers and of furnishing additional facilities to old subscribers shall be as follows:

- (a) For individual or exchange party line service, or extension set..... \$3.50
- (b) For each extension bell..... 2.00
- (c) To cover directory, accounting, circuit and switchboard expenses in cases where service is established by the use of instruments and lines already in place in the subscriber's premises and no change is made in the type or location of such instruments..... 1.50
- (d) To reconnect service when discontinued for non-payment of account..... 1.00
- (e) When it is necessary to erect poles or anchors in order to carry the wires from the main telephone line on the road allowance or street to the applicant's premises, such poles and anchors in connection therewith will be supplied and erected by the Department at the expense of the applicant.

Excess Mileage-Exchange

The excess mileage rate for Exchange Service shall be 50c per month for each quarter-mile or fraction thereof.

MOVING CHARGES

- (1) From one position to another in same room\$1.00 per instrument
- (2) From one room to another on same floor, or from one floor to another in same building, no outside wiring being required.....\$2.00 per instrument
- (3) From one building to another\$3.50 per instrument
- (4) Where a telephone is already installed and no inside move is required, a charge of \$1.50 will be made to cover cost of transferring the wires in central office and changing number on switchboard.
- (5) Where the above rates do not apply, an estimate of cost will be furnished subscriber on request, previous to work being proceeded with.

MONTHLY RENTAL RATES

	Business		Residence		Rural
	Wall	Desk	Wall	Desk	Wall
Day Service.....	\$2.25	\$2.50	\$1.50	\$1.75	\$1.75
Semi-Continuous Service.....	2.75	3.00	1.75	2.00	2.00
Continuous Service—Exchanges under 150 stations.....	3.00	3.25	2.00	2.25	2.00
Continuous Service—Exchanges between 150 and 500 stations.....	3.25	3.50	2.00	2.25	2.00
Continuous Service—Exchanges between 500 and 1,000 stations.....	3.75	4.00	2.25	2.50	2.25
Continuous Service—Exchanges between 1,000 and 5,000 stations.....	4.00	4.25	2.50	2.75	2.50
Continuous Service—Exchanges between 5,000 and 10,000 stations.....	4.50	4.75	2.50	2.75	2.50
Continuous Service—Exchanges between 10,000 and 15,000 stations.....	5.00	5.25	2.50	2.75	2.50

EXTENSION SETS AND EXTENSION BELLS (EXCHANGE)

Business Wall.....	\$1.00 per month	Residence Wall.....	50c per month
Business Desk.....	1.25 per month	Residence Desk.....	75c per month
Extension Bell.....			25c per month
Loud Ringing Extension Bell.....			50c per month

ALBERTA GOVERNMENT TELEPHONES

OFFICIAL TELEPHONE DIRECTORY

Head Office:

C. P. R. BUILDING, EDMONTON

HON. VERNOR W. SMITH,
Minister of Railways and Telephones.

JOHN CALLAGHAN,
Deputy Minister of Railways
and Telephones.

R. B. BAXTER,
General Superintendent,
Edmonton.

Copy for this Edition closed July 15th, 1922

This Directory is the property of the Alberta Government, and is printed for the exclusive use of their patrons, and they assume no liability whatever for damages occurring from errors or omissions in the making up and printing of this book.

Department of Railways and Telephones

TERMS AND CONDITIONS

Under Which Telephone Service is Furnished

USE OF TELEPHONE

1. Telephone instruments and connecting lines are furnished to subscribers to be used in accordance with the rules as prescribed by the Department from time to time, and are to be used only by the subscriber, his agents or employees when engaged upon his business and must not be used for transmitting, receiving or delivering any message or communication in respect of which a consideration has been or is to be paid by any other party, except as permitted by the rules of the Department, nor used in any way in competition with the telephone business conducted by the Department. Subscribers will not be allowed to transfer their telephone number, service, or contract to any other party, unless arranged for in advance by a duly authorized official of the Department.

The right of the subscriber is to use the instruments and connecting lines where the Department may place them, but not elsewhere, under such rules as the Department may from time to time prescribe. He shall not extend their use to other individuals, except his servants upon his business; nor shall they be used for any calls or consideration to be paid by any person other than the subscriber; nor does this confer upon him the right to use any other instrument.

2. The lines and instruments over which the service is furnished remain the property of the Government and shall be carefully used by the subscriber, and only as herein stated in Clause No. 1; and no instrument or appliance not furnished by the Department shall be attached to or used in connection with these lines and instruments.

CONSTRUCTION

3. When it is necessary to erect poles or anchors in order to carry the wires from the main telephone line on the road allowance or street to the applicant's premises, such poles and anchors in connection therewith will be supplied and erected by the Department at the expense of the applicant.

CHARGES—HOW PAID

4. All charges for installations, moves, and monthly rentals shall be paid in advance, which shall entitle the subscriber to service with all subscribers connected to the same exchange. Regular toll rates will be charged for all service to points outside of the exchange.

5. Subscribers shall pay the installation charges, first rental instalment (and construction charges if any) strictly in advance. Excess mileage charge will be added if outside of exchange limits. If subsequent rental accounts remain unpaid after the 20th of the month, service shall be discontinued and if still remaining unpaid after the end of the month, a charge of \$1.00 shall be made to reconnect service; no rebate or reduction shall be allowed for such interruption to service.

6. Subscribers shall pay monthly, at schedule rates, for all messages and conversations over the Long Distance lines. If said accounts remain unpaid after the 20th of the month, further credit shall be refused until account is paid.

7. Subscribers shall pay promptly, upon presentation of account, all charges for other miscellaneous items. If these charges are not paid within 20 days, service shall be discontinued.

COMPLAINTS RE LONG DISTANCE SERVICE

8. No allowance will be made on complaint of inefficient Long Distance service unless such complaint be made to Chief Operator, immediately after conversation has taken place.

VACATION ALLOWANCE

9. Should a subscriber desire to have his **Exchange Residence Service** temporarily discontinued, owing to the closing of his residence, he may do so without cancelling contract or having telephone removed, and, if arranged for in advance in writing, an allowance of one-half of the rate per month will be made **for a period of not less than one month and not exceeding three months** in any one year. Subscriber shall state, when making application, the period for which he expects to be absent and **shall pay for this period in advance**. Subscriber will notify the Department when he wishes service resumed, either in writing or by calling at the office and signing re-connect order.

MOVES

10. The telephone is first located where the subscriber directs and must not be moved or interfered with. **When the subscriber desires to have the telephone moved to any other location, notice in writing should be given to the local office, at least ten days before the change is desired.** The work will then be done as promptly as possible at regular charges.

CANCELLATION OF SERVICE

11. Subscribers giving up service must notify the Department in writing, or call at office and sign "Take Out" order. Failing to do this, subscriber will be liable for rent up to the date instrument is removed or taken over by a new subscriber.

GENERAL

12. If a telephone installed for service at the residence rate be used for the purposes of business or profession, or otherwise than for the usual requirements of a residence, the Department may charge the business rate for such service without regard to the date to which the subscriber has paid for service at the residence rate. This also applies to subscribers, for residence service only, who advertise or use their telephone number in connection with their business or profession.

13. The Department will endeavor to keep the lines and instruments in good working order and undertakes to clear trouble or make repairs with all reasonable despatch, but does not guarantee uninterrupted service.

14. A subscriber's telephone number is not a part of the application for service, but numbers will only be changed when absolutely necessary or for the betterment of the service.

15. The use of obscene, profane or abusive language while using the telephone is strictly forbidden and service may be immediately discontinued for violation of this rule.

DIRECTORY REGULATIONS

This Directory is the property of the Alberta Government and is loaned to telephone subscribers for their use, to be retained until the delivery of the next issue. Subscribers are furnished free one copy for each instrument. Additional copies will be charged for, \$1.00 per copy.

No insertions, changes or corrections may be made after the date set for the closing of copy.

Each subscriber is entitled to one single line entry in the Alphabetical List without charge. Listings in bold type will be charged at the rate of Two Dollars per issue. By special arrangement any subscriber to Exchange Business Service may have the name of any company which he represents, or of any employee or agent, listed in Directory at a nominal charge of One Dollar per line per issue. A subscriber to Exchange Residence service may have the name of a bona fide member of his family listed in the Directory for One Dollar per line per issue. When it is desired to insert the name of a person not an actual member of the family, the charge will be Three Dollars per issue, which includes Exchange Service.

Subscribers are requested to report promptly to the Local Office, in writing, any errors which may appear in this Directory, so that same may be corrected in the next issue.

The Alberta Government Telephones assume no liability whatever for damages occurring through errors or omissions in the making up and printing of this Directory.

INSTRUCTIONS

FOR USE OF AUTOMATIC TELEPHONES

CONSULT THE DIRECTORY IN ALL CASES BEFORE PLACING A CALL.
DO NOT TRUST TO YOUR MEMORY.

(1) Remove receiver from hook before operating dial.

(2) Bring the finger squarely to the finger stop.

IMPORTANT.—When calling a number, allow a slight interval to elapse between each figure.

(3) Face the transmitter, with the lips almost touching the mouthpiece. Speak naturally, distinctly and not too rapidly.

(4) Do not move receiver hook or dial while talking, as this will disconnect you.

(5) Always hang up receiver for a short interval before making a second call, to allow the mechanism to release.

(6) Hang receiver on hook (small end up) when through talking; otherwise no one can obtain connection with your telephone.

(7) BUSY BUZZ. If, after calling a number, a buzzing sound is heard, it indicates that the number called for is busy.

EXAMPLE

To call M2300—Remove receiver from hook, place finger in finger-hole "M" and pull dial down until finger reaches the finger-stop; let dial rotate back; then in same manner pull 2-3-0-0.

Dial will rotate back. Do not interfere with this backward motion.

Place receiver to your ear. If the busy buzz is heard, it indicates that M2300 is busy. This being the case, hang up the receiver and call again within a reasonable time.

At completion of conversation, hang receiver on hook, small end up.

You are now entirely disconnected and ready to call another number or to be called.

If a mistake is made in calling the correct number or if the dial is improperly operated, the receiver must be hung up before calling again. If connection is accidentally broken it should be restored by the calling party. When using an extension telephone, listen and speak before operating dial.

AUTOMATIC EXCHANGES

INFORMATION

Call "Information" for NUMBERS of New Subscribers, Changes, Long Distance Line Charges, New Toll Offices, etc.

TROUBLE

Complaints regarding Telephone Troubles should be reported to Trouble Operator. When reporting trouble, give telephone number affected and its location, also state as accurately as possible just how trouble manifests itself. Try to be specific as incomplete information frequently causes delay in locating nature of trouble. If a line you are trying to call repeatedly tests "busy" notify Trouble Clerk, who will investigate whether same is caused by an abnormal condition on line or from use. If any line appears too busy for good service, write to the Commercial Manager. Subscribers are requested not to engage Trouble or Information Clerks in conversation longer than necessary, as by so doing the clerk will be prevented from giving prompt attention to other patrons.

INSTRUCTIONS

FOR USE OF MANUAL TELEPHONE

CONSULT THE DIRECTORY IN ALL CASES BEFORE PLACING A CALL.
DO NOT TRUST TO YOUR MEMORY.

To call the Operator, give *one long ring* before removing the receiver from the hook, and then hold the receiver to the ear. When the Operator replies by saying, "Number?" give the number of the subscriber's telephone desired, slowly and distinctly. At multi office exchanges, first indicate the exchange desired by the prefixed letter and then pronounce the number by digits.

For example:—"M1429" should be pronounced "M one-four-two-nine."

At other exchanges pronounce the number desired by digits.

For example:—"175" should be pronounced "One-seven-five."

Note.—To call the operator at Camrose or Wetaskiwin (Common Battery exchanges), remove the receiver from the hook and proceed as instructed above.

When finished talking, place the receiver on the hook, small end up. No ringing, except by rural line subscribers, is necessary at these exchanges.

Keep the receiver to the ear, and the Operator, after repeating the number, will connect you with the Subscriber called for. If the desired line is found to be in use, the Operator will report "Line Busy."

When you have finished talking, place the receiver on the hook, small end up, and give a *short ring*. This gives the Operator a signal to disconnect, and you are then in a position to call another number, or to be called.

ANSWER THE CALLS ON YOUR TELEPHONE PROMPTLY BY ANNOUNCING YOUR TELEPHONE NUMBER.

Face the Transmitter, with the lips almost touching the mouthpiece. Speak naturally, distinctly, and not too rapidly.

Call "**Information**" for subscribers or changes not found in this Directory.

DO NOT USE THE TELEPHONE DURING A THUNDER-STORM.

Rural line subscribers should limit their local conversations to **FIVE MINUTES** duration, and must not "listen-in" to conversations not intended for them, as it interferes with the service.

COMPLAINTS

Complaints regarding telephone trouble and unsatisfactory service should be made to the Agent or Chief Operator at the office concerned, and if not rectified within a reasonable time the matter should be referred to the Traffic Superintendent at Edmonton.

NOTICE

TO TELEPHONE SUBSCRIBERS
AND THE PUBLIC



All employees of the Alberta Government Telephones whose duties require them to enter the premises of subscribers or others, are required to wear a badge similar to that illustrated above. The public is hereby notified to require all persons who desire to enter their buildings or premises for purposes in connection with the Telephone to exhibit their badges and note the numbers of the same. Any person claiming to be an employee of the Alberta Government Telephones, who is without this badge, should be refused admission and the Local Agent be notified at once by telephone.

LONG DISTANCE SERVICE

Rules and Regulations

To make a Long Distance Call:—

(a) If you desire Station-to-Station service call "Long Distance" in the regular way. When the Long Distance operator answers, give the Number of the telephone from which you are speaking and say, "I want to speak to.....(telephone number).....(terminating office). Anybody at that number will do."

(b) If you desire to reach a particular person at a certain telephone number or address, call "Long Distance" in the regular way. When the Long Distance operator answers give the Number of the telephone from which you are speaking, also your name and initials together with the initials and name of the particular person desired and the city or town where he can be located.

Example:—Number 4567, J. H. Brown speaking. "I want to speak to Mr. John Jones No. 684 Springdale," or "I want to speak to anyone who can talk business at No. 684 Springdale," or "If Mr. Jones is not there I will speak to Mr. A. F. Smith."

(c) If you desire to place an Appointment or Messenger call, or transmit a Written Message or Telegram, call "Long Distance" in the regular way and give your order as heretofore.

Long Distance Charges.—All rates quoted are for an initial period of three minutes. For over-time beyond the initial period a proportionate charge is made per minute.

Long Distance Tolls will be charged to the subscriber from whose instrument the Long Distance call is placed.

Night Rates.—Evening and Night Rates apply only to Station-to-Station calls. See page 10 for further information. Day rates only are in effect between Alberta and Saskatchewan Government Telephones' points. The Kootenay Telephone Lines, Ltd. (B.C.) Day and Night Rates are the same.

Supervision by Private Branch Exchange Operators.—The Long Distance operator is held responsible for the supervision and timing of all messages and for the character of the service furnished. Supervision of connections by Private Branch Exchange operators interferes with the service and such operators should not remain "cut in" on the line after the connection has been established.

Reversal of Charges.—All charges will be made against the Originating Office except those messages for which the receiving party expressly agrees to pay. The assent of the receiving party to a reversal of charges should be obtained before the connection is established.

Messenger Service.—Upon request, and the pre-payment of reasonable charges a messenger will be sent when possible to notify a non-subscriber to come to any Public Pay Station.

When a Particular Person is desired the Long Distance operator must be so advised when the call is placed, otherwise charges will be made from the time connection is established with the telephone desired, whether the party is obtained or not.

Slot Machine Pay Station Service.—Slot Machine Telephones have been installed by the Department, for the convenience of subscribers and the general public, in suitable locations throughout the City.

Local conversations may be had from these Telephones at a charge of 5 cents for 5 minutes.

Long Distance service is furnished at regular tariff rates upon deposit of the amount of the initial charge (covering three minutes' conversation), the usual charges being made for excess time.

Non-subscribers who desire to use subscribers' telephones should be referred to the nearest Public Pay Station

If there is anything about our rates and practices you do not fully understand, please call your Local Manager or Chief Operator and they will be glad to explain.

LONG DISTANCE RATES

From Calgary

To Places connected with the Long Distance Lines of the Alberta Government
Telephones and Connecting Systems in Alberta.

NOTE:—These Rates are Subject to Change without Notice.

TO	Station- to-Station Day Rate	TO	Station- to-Station Day Rate	TO	Station- to-Station Day Rate	TO	Station- to-Station Day Rate
	\$ c		\$ c		\$ c		\$ c
Abee.....	1.35	Buffalo.....	.95	Doucetto.....	1.50	Heath Creek.....	.55
Abilene.....	1.50	Buffalo Head Ranch.....	.30	Downing.....	1.35	Heaton Moor.....	1.35
Acme.....	.25	Bulwark.....	.85	Drayton Valley.....	1.00	Heister.....	.85
Adkins.....	.25	Burdett.....	.90	Drumheller.....	.40	Hespero.....	.80
Aldrie.....	.15	Busby.....	1.20	Duchess.....	.60	High River.....	.25
Alberta Beach.....	1.15			Dunstable.....	1.20	Hilda.....	1.10
Alcomdale.....	1.20			Durlingville.....	1.65	Hilliard.....	1.15
Alderson.....	.80			Duverney.....	1.35	Holden.....	1.05
Alequiers.....	.30	Cache Lake.....	1.50			Hopkins.....	1.50
Alhambra.....	.60	Cadogan.....	1.10	Eagle Butte.....	1.15	Hughenden.....	1.00
Alix.....	.65	Cairns.....	1.10	Eastburg.....	1.35	Hussar.....	.40
Allerton.....	1.05	Calahoo.....	1.15	Echohill.....	1.35	Huxley.....	.45
Alliance.....	.85	Callin Lake.....	1.60	Edenville.....	.60		
Alsask, Sask.....	1.10	Calmar.....	.95	Edberg.....	.80	Iddesleigh.....	.75
Altario.....	1.10	Campsle.....	1.35	Edgerton.....	1.20	Innisfail.....	.45
Amethyst.....	.50	Camrose.....	.90	Edmonton.....	1.10	Innisfree.....	1.20
Amisk.....	1.00	Carbon.....	.35	Edmonton Beach.....	1.05	Iola.....	.75
Andrew.....	1.35	Cardston.....	.85	Edward.....	1.35	Irma.....	1.10
Angle Lake.....	1.35	Carlton Hill.....	1.35	Edwell.....	.50	Iron Springs.....	.65
Ankerton.....	.85	Carmangay.....	.50	Egremont.....	1.35	Irricana.....	.20
Anthony.....	1.20	Caroline.....	.50	Elk Point.....	1.50	Irvine.....	1.15
Arbutus.....	.60	Carolside.....	.65	Ellscoth.....	1.50	Islay.....	1.35
Ardmore.....	1.65	Carstairs.....	.25	Elmore.....	.50		
Ardrassan.....	1.10	Carvel.....	1.05	Empress.....	1.10	Jarrow.....	1.05
Armada.....	.45	Cassils.....	.60	Enchant.....	.60	Jarvie.....	1.50
Ashmont.....	1.50	Castor.....	.75	Endlang.....	.65	Jenkins.....	1.65
Athabasca.....	1.65	Catchem.....	1.20	Entwistle.....	1.10	Jenner.....	.80
Atlee.....	.85	Cavendish.....	1.00	Erskine.....	.65	Judson.....	.85
Avalon.....	1.15	Cayley.....	.30	Etzikom.....	1.05		
		Cereal.....	.90	Evansburg.....	1.15	Kananaskis.....	.30
Baintree.....	.25	Cessford.....	.70	Evarts.....	.55	Kapasiwin.....	1.10
Banff.....	.45	Champion.....	.45	Exelme.....	.70	Kathryn.....	.15
Barons.....	.55	Chancellor.....	.35	Excel.....	.95	Kelsey.....	.85
Barrhead.....	1.35	Chapico Lake.....	1.10	Exshaw.....	.30	Kesville.....	.45
Bartlettville.....	1.00	Chauvin.....	1.20			Kew.....	.20
Bashaw.....	.75	Cherhill.....	1.20	Faith.....	1.10	Killam.....	.95
Bassano.....	.45	Chin.....	.70	Falls.....	1.10	Kingman.....	1.00
Battenburg.....	1.20	Chinook.....	.85	Fawcett.....	1.50	Kinnondale.....	.65
Battle Lake.....	.85	Chipman.....	1.20	Fedorah.....	1.20	Kinsella.....	1.05
Bawlf.....	.90	Claresholm.....	.50	Ferintosh.....	.80	Kipperville.....	1.10
Beauvallon.....	1.35	Clarinda.....	1.10	Foremost.....	1.00	Kirk McKinnon.....	.85
Beaver Crossing.....	1.80	Clive.....	.65	Forestburg.....	.85	Kirriemuir.....	1.05
Beaver Heights.....	.60	Cluny.....	.35	Fort Assiniboine.....	1.50	Kitscoty.....	1.35
Belseker.....	.25	Clyde.....	1.35	Fort Saskatchewan.....	1.15	Knob Hill.....	.85
Bellis.....	1.50	Cochrane.....	.15	Four Nine.....	1.10	Krakow.....	1.20
Belvedere.....	1.35	Cold Lake.....	1.80	Freedom.....	1.35		
Benato.....	.55	Columbine.....	1.65	Fresnoy.....	1.65	Lacombe.....	.65
Bentley.....	.65	Compeer.....	1.10			Lac Ste Anne.....	1.15
Benton.....	1.00	Comrey.....	1.20	Gadsby.....	.70	Laford.....	1.35
Berry Moor.....	1.00	Comrie.....	1.35	Gaetz Valley.....	.55	Lake Isle.....	1.15
Beynon.....	.40	Condor.....	.60	Gagnon.....	1.65	Lake Valley.....	.95
Big Fish Lake.....	1.35	Conrad.....	.85	Gahern.....	1.10	Lakesend.....	.95
Big Valley.....	.55	Consort.....	.95	Gairford.....	1.10	Lamont.....	1.20
Bindloss.....	1.00	Cooking Lake.....	1.05	Galahad.....	.85	Landonville.....	1.50
Birdholm.....	1.05	Coronado Beach.....	1.20	Garden Plain.....	.70	Lanfine.....	.90
Blackie.....	.25	Coronation.....	.85	Gem.....	.55	Langdon.....	.15
Blairmore.....	.65	Countess.....	.55	Gibbons.....	1.20	Lavoy.....	1.15
Blood Reserve.....	.75	Coutts.....	1.05	Gleichen.....	.30	Lawton.....	1.35
Bloomsbury.....	1.35	Cowley.....	.65	Glendon.....	1.50	Le Goff Jct.....	1.65
Bolan.....	1.35	Craigmyre.....	.55	Glenaville.....	1.20	Lea Park.....	1.50
Bon Accord.....	1.20	Crawford.....	1.80	Glenwoodville.....	.75	Leduc.....	.95
Bondiss.....	1.50	Cremona.....	.25	Goddard.....	1.00	Leedale.....	.70
Bonnyville.....	1.65	Crossfield.....	.20	Gorman.....	1.65	Legal.....	1.20
Bordenave.....	1.50	Cummings.....	1.20	Graminia.....	1.00	Legend.....	.95
Botha.....	.70	Czar.....	1.05	Granum.....	.55	Leighton.....	1.50
Bottrel.....	.25			Grassy Lake.....	.85	Leo.....	.85
Boundary Creek.....	.90	Dakin.....	1.65	Green Court.....	1.35	Leslieville.....	.60
Bow City.....	.60	Dalroy.....	.15	Grosmont.....	1.65	Lethbridge.....	.70
Bow Island.....	.90	Dapp.....	1.50	Groton.....	1.10	Lowiston.....	1.50
Bowden.....	.40	Darwell.....	1.15	Gull Lake.....	.65	Lines.....	1.65
Bowell.....	.95	Davis.....	1.35	Gunn.....	1.15	Lisburn.....	1.20
Bowmanton.....	1.05	Daysland.....	.90	Hake.....	.95	Lloydminster.....	1.50
Box Springs.....	1.50	Del Bonita.....	.95	Halfway Lake.....	1.35	Lomond.....	.50
Boyle.....	1.50	Delburne.....	.55	Halkirk.....	.75	Lonira.....	1.35
Boyer Lake.....	1.50	Deila.....	.55	Hanna.....	1.35	Looma.....	1.00
Bragg Creek.....	.20	Delph.....	1.35	Hardisty.....	1.00	Lougheed.....	1.00
Brant.....	.30	Desjardins.....	1.35	Harmattan.....	.35	Lousana.....	.55
Breezeland.....	.95	Deville.....	1.05	Harvest Vale.....	.95	Low Creek.....	1.35
Brooks.....	.65	Didsbury.....	.30	Hay Creek.....	1.35	Loyalist.....	.90
Brousseau.....	1.35	Donald.....	.75	Hay Lakes.....	.95	Lucky Strike.....	1.05
Bruce.....	1.05	Doondale.....	1.10			Lunnford.....	1.35
Bruderheim.....	1.20					Luzan.....	1.35

TO	Station-to-Station Day Rate	TO	Station-to-Station Day Rate	TO	Station-to-Station Day Rate	TO	Station-to-Station Day Rate
	\$ c		\$ c		\$ c		\$ c
Macleod.....	.60	Olson Coulee.....	.60	Rockyford.....	.30	Swatwell.....	.30
Mageau.....	1.50	Onoway.....	1.15	Rocky Mt. House.....	.65	Sweet Grass, Mont.....	1.15
Magnolia.....	1.15	Opal.....	1.35	Rocky Rapids.....	1.00	Sylvan Lake.....	.55
Magrath.....	.80	Orion.....	1.15	Roeske.....	1.35	Taber.....	.75
Manola.....	1.35	Orvilton.....	1.50	Rosalind.....	.85	Tawatinaw.....	1.35
Manville.....	1.20	Owens.....	1.65	Roseglenn.....	1.05	Tees.....	.65
Manyberries.....	1.15	Oxville.....	1.35	Rose Lynn.....	.70	Telfordville.....	.95
Markerville.....	.50	Oyen.....	1.00	Rosebud.....	.35	Thelma.....	1.20
Masinasin.....	1.05			Rosemary.....	.55	Therion.....	1.50
Maunsell.....	.60			Rossington.....	1.35	Thorhild.....	1.35
Maybridge.....	1.35	Pakan.....	1.35	Rowley.....	.50	Three Hills.....	.35
Mayerthorpe.....	1.35	Pakowki.....	1.10	Roydale.....	1.35	Tofield.....	1.05
McKellar.....	1.35	Parkland.....	.40	Rumsey.....	.50	Tomahawk.....	1.05
McNally.....	.70	Park View.....	.80	Ryley.....	1.05	Travers.....	.55
Meanook.....	1.50	Partridge.....	1.00			Tring.....	1.50
Mecheche.....	.50	Pashley.....	1.10	St. Albert.....	1.10	Trochu.....	.40
Medicine Hat.....	1.00	Patricia.....	.70	St. Joseph.....	1.65	Two Hills.....	1.35
Meeting Creek.....	.80	Pearsonville.....	.90	St. Kilda.....	1.15		
Mellowdale.....	1.35	Peat.....	1.50	St. Lina.....	1.50		
Metiskow.....	1.05	Pekisko.....	.30	St. Paul.....	1.50	Vale.....	1.10
Milk River.....	1.00	Pemukan.....	1.05	St. Vincent.....	1.50	Valleyfield.....	.95
Millarville.....	.20	Pendant d'Oreille.....	1.15	Sammons.....	1.10	Vanest.....	1.35
Millet.....	.90	Penhold.....	.50	Sandy Lake.....	1.15	Vanleet.....	1.35
Millcent.....	.65	Peno.....	1.35	Sangudo.....	1.20	Vegreville.....	1.15
Milo.....	.40	Perryvale.....	1.50	Sarrail.....	1.65	Verburg.....	1.05
Minburn.....	1.20	Phillips.....	1.05	Schuler.....	1.10	Vermilion.....	1.35
Mirror.....	.65	Pibroch.....	1.35	Scollard.....	.50	Veteran.....	.90
Monarch.....	.60	Pickardville.....	1.35	Scottfield.....	.75	Victoria.....	1.35
Monitor.....	1.00	Pincher Creek.....	.70	Seaforth.....	.95	Viking.....	1.05
Morinville.....	1.20	Pine Creek.....	1.35	Seba.....	1.10	Vilna.....	1.50
Morningside.....	.70	Pollockville.....	.70	Sedalia.....	.95	Vimy.....	1.35
Morrin.....	.45	Ponoka.....	.70	Sedgewick.....	.95	Vulcan.....	.40
Mossdale.....	1.35	Priddis.....	.15	Seven Persons.....	1.00		
Moyerton.....	1.35	Princeton.....	.30	Seymour.....	1.20		
Mulhurst.....	.85	Provost.....	1.15	Shandro.....	1.35	Wabamun.....	1.10
Mundare.....	1.15			Sheerness.....	.70	Waddington.....	1.05
Munson.....	.45			Sibbald.....	1.05	Wahstao.....	1.35
		Radway.....	1.35	Sion.....	1.20	Wainwright.....	1.15
		Rainier.....	.65	Skiff.....	.90	Walker.....	1.50
		Ranfurly.....	1.15	Smiths.....	1.35	Walsh.....	1.20
		Raven.....	.50	Smoky Lake.....	1.35	Wardlow.....	.70
		Ray.....	1.15	Soda Lake.....	1.35	Warner.....	.90
		Raymond.....	.80	Southesk.....	.60	Warspite.....	1.35
		Redcliff.....	1.00	Southworth.....	1.35	Wasel.....	1.35
		Red Deer.....	.55	Spring Coulee.....	.80	Waskatenau.....	1.35
		Red Willow.....	.70	Spring Point.....	.60	Waterton Park.....	.85
		Redland.....	.35	Stampede.....	.75	Wayne.....	.45
		Redwater.....	1.35	Stand Off.....	.30	Westerose.....	.85
		Reist.....	.80	Standard.....	.70	Westlock.....	1.35
		Retlaw.....	.65	Stammore.....	.40	Wetaskiwin.....	.85
		Ribstone.....	1.20	Stavely.....	.65	White Court.....	1.35
		Richards.....	1.65	Stettler.....	.70	Whitla.....	.95
		Richardson.....	1.20	Stevenville.....	.80	Wisdom.....	1.10
		Richdale.....	.70	Stirling.....	.80	Winnifred.....	.95
		Richfield.....	.95	Stony Plain.....	1.05	Wrentham.....	.85
		Rife.....	1.50	Strathmore.....	.20		
		Rimbey.....	.70	Strome.....	.90	Yeoford.....	.85
		Rio Alto.....	.25	Suffield.....	.85	Youngstown.....	.80
		Riverbow.....	.65	Sullivan Lake.....	.75		
		Riverbow Ferry.....	.65	Sunnynook.....	.65		
		Rochester.....	1.50	Sunnyslope.....	.30	Zawalo.....	1.35
		Rochfort.....	1.35				

NOTES—

1. All preceding rates quoted are for an initial period of three minutes. For overtime beyond the initial period a proportionate charge is made per minute.
2. The preceding rates are Station-to-Station Day rates.
3. The Day Rate for a Station-to-Station call is the fundamental rate upon which the rates for other classes of service are based.
4. The rate for a completed Person-to-Person call, either Paid or Collect, is approximately 25 per cent. higher than the corresponding Station-to-Station Day rate.
5. The rate for a completed Messenger or Appointment call, including Written Messages and Telegrams, is approximately 50 per cent. higher than the corresponding Station-to-Station Day rate.
6. (a) Between 7 p.m. and 12 midnight, the Station-to-Station rates are approximately one-half the Day rate and are known as "Evening Rates."
(b) Between 12 midnight and 4:30 a.m. the Station-to-Station rates are approximately one-fourth the Day rates and are known as "Night Rates."
- (NOTE.—In no case shall the Evening or Night rate, as the case may be, be less than 25c for the initial period, unless the Station-to-Station Day rate is less, in which case the Station-to-Station Day, Evening and Night rate shall be the same.)
- (c) Evening and Night rates apply only to Station-to-Station calls. There is no reduction in the Person-to-Person rate regardless of the hour when the call is completed.
7. Day rates only are used for computing charges on Person-to-Person, Appointment, and Messenger calls, including Written Messages and Telegrams.
8. The charges on Station-to-Station messages cannot be made Collect, i.e., reversed. If the call is subsequently made Collect, i.e., collected from the called station it will take the Person-to-Person rate.
9. Under certain conditions a Report Charge of approximately one-quarter of the "Station-to-Station" Day rate will be made on uncompleted Person-to-Person, Appointment and Messenger calls, including Written Messages and Telegrams.
10. A Report Charge shall not be made on Station-to-Station calls under any condition.
11. See pages 11 and 12 for list of places in British Columbia and Saskatchewan between which service can be given. Rates to these points can be obtained by calling "Long Distance."
12. If there is anything about our rates and practices you do not fully understand, please call your Local Manager or Chief Operator, and they will be glad to explain.

In addition to the points on preceding pages Long Distance Connection may be had also with the following places in Alberta and British Columbia, rates for which can be obtained by calling "Long Distance":—

Alberta Points

ACADIA VALLEY	CONTENT	HAIRY HILL	MEADOW CREEK	SARCEE
ACHESON	COPEVILLE	HALLEY	MENAİK	SATHER
AETNA	COUNTRY CLUB	HALLMAN	MERNA	SCOTSTOUN
AGRICOLA	COUSINS	HANEYVILLE	MEWASSIN	SEEBE
ALBAY	CRAIGMILLAR	HASTINGS COULEE	MIDNAPORE	SHARROW
ALBION RIDGE	CRANMER	HAWKEYE	MILLER	SHEPARD
ALDERSYDE	CROWFOOT	HAYNES	MILNERTON	SIEBERTVILLE
ALICE LAKE	CURREWY	HAYTER	MINOTT	SILVER LAKE
ANGUS RIDGE		HAZELMERE	MORLEY	SIMONS VALLEY
ANZAC		HEARNLEIGH	MOSSLEIGH	SOCIAL PLAINS
ARDENVILLE	DALEMEAD	HEATH	MOUND	SPRING LAKE
ARDELEY	DAUNTLESS	HEATHER BRAE	MOUNTAIN VIEW	SPRINGBANK
ARMENA	DAVISBURG	HERRONTON	MOUNT LOOKOUT	SPRINGDALE
ARROWWOOD	DEERING	HETHERINGTON	MURRAY VALLEY	SPRINGVALE
ASKER	DEACOUR	HILL END		SPRUCE GROVE
AVION	DEMAY	HILLCREST		STAPLEHURST
BADGER LAKE	DEWBERRY	HILLSPRING	NAKAMUN	STAR
BALMORAL	DE WINTON	HOBBS	NAMAYO	NEAPOLIS
BANKHEAD	DIAMOND CITY	HOBBS	NEAPOLIS	NEUTRAL HILLS
BARDO	DICKSON	HORSE HILLS	NEVIS	NEW BRIGDEN
BARNWELL	DILIGENCE	HORSESHOE	NEW LINDSAY	NEW LUNNON
BARONET	DINA	COULEE	NEW OXLEY	NEW SPRUCE
BATHGATE	DINANT	HORSESHOE FALLS	NISBET GROVE	NISKU
BATTLE	DINTON	HORSESHOE LAKE	NORMA	NORTON
BATTLE BEND	DOBSON	HUBALTA	NOYES CROSSING	
BATTLE RIDGE	DODDS	HUGHES		OGDEN
BATTLEVIEW	DOG POUND	HUNTERVILLE		OHATON
BEAUMONT	DORENLEE	INDUS		OLD BRANT
BEAVER HILLS	DRY FORK	INDUSTRIAL		OLD SPRUCE
BEAVER LAKE	DUAGH	INGA SCHOOL		OLIVER GROVE
BEAVER MINES	DUFFIELD	INGLETON		O'MARA
BEAZER	DUHAMEL	INGLIS		ORTON
BEDDINGTON	DUNMORE	IRWINVILLE		OTOSKIWAN
BELLEVUE		JEFFREY		OUELLETTEVILLE
BELLSHILL	EAGLE HILL	JOFFRE		PARADISE VALLEY
BELMONT	EARLIE	JOSEPHBURG		PARTRIDGE HILL
BENNETT	EARLING	JUMPING POUND		PASSBURG
BISMARCK	EARLVILLE			PATIENCE
BISSELL	EASTWAY	KANATA		PAXSON
BITTERN LAKE	EDISON	KENEX		PEARCE
BLACK DIAMOND	ELK ISLAND PARK	KESSLER		PICTURE BUTTE
BLACKFALDS	ELKTON	KILBOURN		PINCHER STATION
BLACKFOOT	ELKWATER	KIPP		PINE LAKE
BLAKESVILLE	ELLERSLIE	KIRKCALDY		PIRMEZ CREEK
BLONDHEIM	EMERY	KNEE HILL VALLEY		PLEASANT VIEW
BONLEA	ENSIGN			POPLAR RIDGE
BOW VALLEY	ENSLEIGH	LA CALMETTE		POPLAR SITE
BOWVILLE	EVERETT	LAKE DE MAY		PRETTY HILL
BRADSHAW	EXCELSIOR	LAKE MINNE-		PUFFER
BREMNER		WANKA		PURPLE SPRINGS
BRIGHTVIEW	FABYAN	LAKEVIEW		QUARREL
BROCKET	FAIRACRES	LAMOUREUX		QUEENSTOWN
BROOKSLEY	FAIRBANK	LARSEN		RABBIT HILL
BROWNFIELD	FAIRYDELL	LATHOM		RALEY
BROWNLOW'S	FALUN	LAVESTA		RANCHVILLE
LANDING	FEDERAL	LAWNDALE		RED LODGE
BUFORD	FERRY POINT	LEAVITT		REID HILL
BURMIS	FERRYBANK	LEESHORE		REXBORO
BURN'T LAKE	FISHBURN	LEOPOLDVILLE		RICH VALLEY
CALDBECK	FLEET	LEWISVILLE		RIDDELLVALE
CALDER	FOREST LAWN	LIBERTY		RISING SUN
CALDWELL	FRANK	LILLE		RIVIERE QUI
CAMPBELL LAKE	FRANKBURG	LIVESTON		BARRE
CAPPON		LOCH SLOY		ROCKELING BAY
CARBONDALE	GHOST PINE	LOCKHART		ROCKY VIEW
CARDIFF	GILLEN	LONG		RODINO
CARNFORTH	GILPIN	LONG COULEE		ROLLING GREEN
CARSLAND	GLADYS	LONGVIEW		ROSEDALE
CARTHEW	GLENBOW	LUNDBRECK		ROSENHEIM
CASAVANT	GLENFORD	LUSIGNAN		ROSENROLL
CHAILEY	GLENIFFER			ROSYTH
CHESTERWOLD	GLENVIEW	MAJORVILLE		ROUND HILL
CHIGWELL	GOLDEN SPIKE	MAKEPEACE		RUSYLVA
CLEARVIEW	GOOD HOPE	MALMO		SALISBURY
CLOSE	GOOD LUCK	MANFRED		SALTAUX
CLOVER BAR	GOPHER HEAD	MAPLE LEAF		SAMPSONTON
CLYMONT	GRAINDALE	MARTINS		
COAL CITY	GRAINGER	MARWAYNE		
COALDALE	GRAND VALLEY	MAUGHAN		
COALHURST	GRANT LAKE	MAUNDERS		
COLEMAN	GREEN GLADE	MAYBUTT		
COLINTON	GREENSHIELDS	MAYTON		
COMMERCE	GRIESBACH	MAZEPPA		
CONJURING CREEK	GROS VENTRE	McEWEN		
	GWYNNE	McLAUGHLIN		

B. C. Points

BAKER	DORR	HARTLEY	MARYSVILLE	ST EUGENE MIS.
BAYNES LAKE	ELKO	HOSMER	MICHEL	SION
BULL RIVER			MORRISON COLONY	WALDO
			MORRISSEY	WARDNER
CAITHNESS	FERNIE	JAFFRAY	MOYIE	WASA
COAL CREEK	FLAGSTONE			WATTSBURG
CRANBROOK	FORT STEELE	KIMBERLEY	NATAL	WYCLIFFE
CROW'S NEST	GALLOWAY	KINGSGATE	OLSON	YAHK
		KRAG		

Limited Long Distance Connection

Between the following points in Alberta and SASKATCHEWAN

CONNECTING VIA ALSASK, SASK. (Alberta Offices)

ALSASK, SASK.
BENTON
CALGARY
CEREAL

CHINOOK
CRAIGMYLE
DELIA
DRUMHELLER

EXCEL
HANNA
LANFINE
MECHECHE

MUNSON
OYEN
RICHDAL
SCOTFIELD

SEDALIA
SIBBALD
STANMORE
WAYNE
YOUNGSTOWN

and (Saskatchewan Offices)

BROCK
FISKE
FLAXCOMBE

KERROBERT
KINDERSLEY

LOVERNA
MARENGO

McGEE
NETHERHILL

PINKHAM
ROSETOWN
SASKATOON

CONNECTING VIA EMPRESS (Alberta Offices)

ATLEE
BASSANO

BINDLOSS
BUFFALO

CALGARY
CAVENDISH

DUCHESS
JENNER

and (Saskatchewan Offices)

ABBEY
BATTRUM
BEVERLEY
CABRI

ESTUARY
LANCER
LEADER

LEMSFORD
PENNANT
PORTREEVE

PRELATE
SCEPTRE
SHACKLETON

SUCCESS
SWIFT CURRENT
WESTERHAM

CONNECTING VIA MEDICINE HAT (Alberta Offices)

ALDERSON
ATLEE
BASSANO
BINDLOSS
BLAIRMORE
BOW ISLAND
BOWELL
BOWMANTON
BROOKS

BUFFALO
BURDETT
CALGARY
CARDSTON
CAVENDISH
DUCHESS
GRASSY LAKE
HARVEST VALE
HILDA

IRON SPRINGS
IRVINE
JENNER
LETHBRIDGE
MACLEOD
MAGRATH
MEDICINE HAT
NEW DAYTON

PASHLEY
PINCHER CREEK
RAYMOND
REDCLIFF
RETLAW
ROSEGLEN
SCHULER
SEVEN PERSONS
SPRING COULEE

STIRLING
SUFFIELD
TABER
VALE
WADDINGTON
WALSH
WARNER
WHITLA
WINNIFRED

and (Saskatchewan Offices)

ABBEY
ANTELOPE
BATTRUM
BEVERLEY
CABRI
CARMICHAEL
CARON
CHAPLIN
ERNFOLD

ESTUARY
GULL LAKE
HATTON
HERBERT
INDIAN HEAD
KINCORTH
LANCER
LEADER
LEMSFORD

LUMSDEN
MAPLE CREEK
MOOSE JAW
MORSE
MORTLACH
N. FORRES
PARKBEG
PENNANT
PIAPOT

PORTREEVE
PRELATE
REGINA
ROULEAU
RUSH LAKE
SCEPTRE
SECRETAN
SHACKLETON
SIDEWOOD

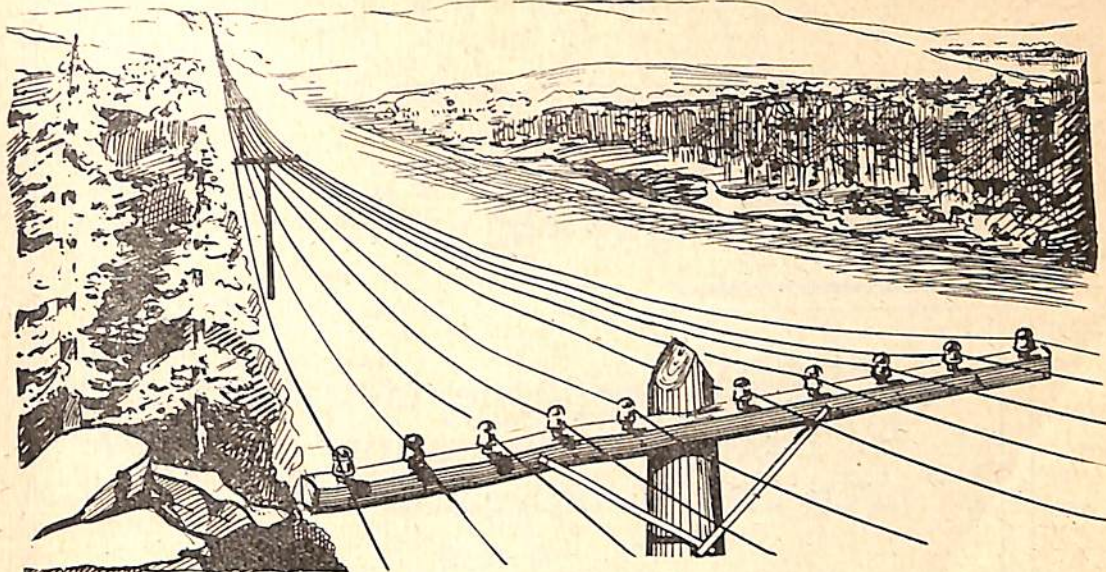
STRASBOURG
SUCCESS
SWIFT CURRENT
TOMPKINS
WALDECK
WEBB
WESTERHAM
WEYBURN
WOLSELEY

SELL YOUR GOODS by Telephone

Our Long Distance Service enables you to personally canvass Country Customers at a minimum of expense, and an enormous saving of time.

ADVERTISE your goods in the Telephone Directory and complete the sale on the Long Distance Telephone.

ALBERTA GOVERNMENT TELEPHONES



This Way —to Broader Markets

Right at your elbow is your Long Distance telephone. With it, you can talk with any of 100,000 telephones in Alberta, Saskatchewan and British Columbia.

"Clear the Way!" Long Distance seems to say—"here's an important message!"

For there is something impressive about a Long Distance call. The customer is favorably impressed before he knows what the message is about. And Long Distance gives you the right of way into every man's office. He can ignore your advertising, your letter, or even your traveller, but ignore a Long Distance call? Instinctively he reaches for the telephone!

Keep down selling expense. Use your "Silent Partner." You will be amazed to find how many people can be sold your product by Long Distance—quickly—economically.

If you have several calls to make, our Local Manager can arrange to have one follow the other. Think of him as the Manager of *your* telephone service. He can suggest ways of applying Station-to-Station service to your business.

THE ALBERTA GOVERNMENT
TELEPHONES



Directory Advertising

EVERY telephone in Calgary and District has a Directory by its side every day of the year.

The Directory is used thousands of times daily. -

It is never thrown into the waste-paper basket until a new edition is issued. Probably no other publication can make a like claim to continuity of circulation.

The Telephone Directory is used for innumerable purposes—the alphabetical section for general information, correct spelling of names, street addresses, etc.—the classified section for buying and selling.

There are many ways in which the Directory may become of additional service to subscribers—extra listings may be arranged for, by which a subscriber to Exchange Business Service may have the names of any companies he represents, or of any employee or agent, listed in the Directory, at a nominal charge, and where two persons are sharing the same residence they may both be listed in the Directory for a small extra charge.

Our low rates and the ever-increasing circulation of the books render Telephone Directory Advertising the cheapest and most effective form of publicity you can buy.

For further particulars and rates apply

CALL
M6005
OR
M6198

Directory Advertising Department

ALBERTA GOVERNMENT TELEPHONES

128 7th AVE. W., CALGARY

CALGARY

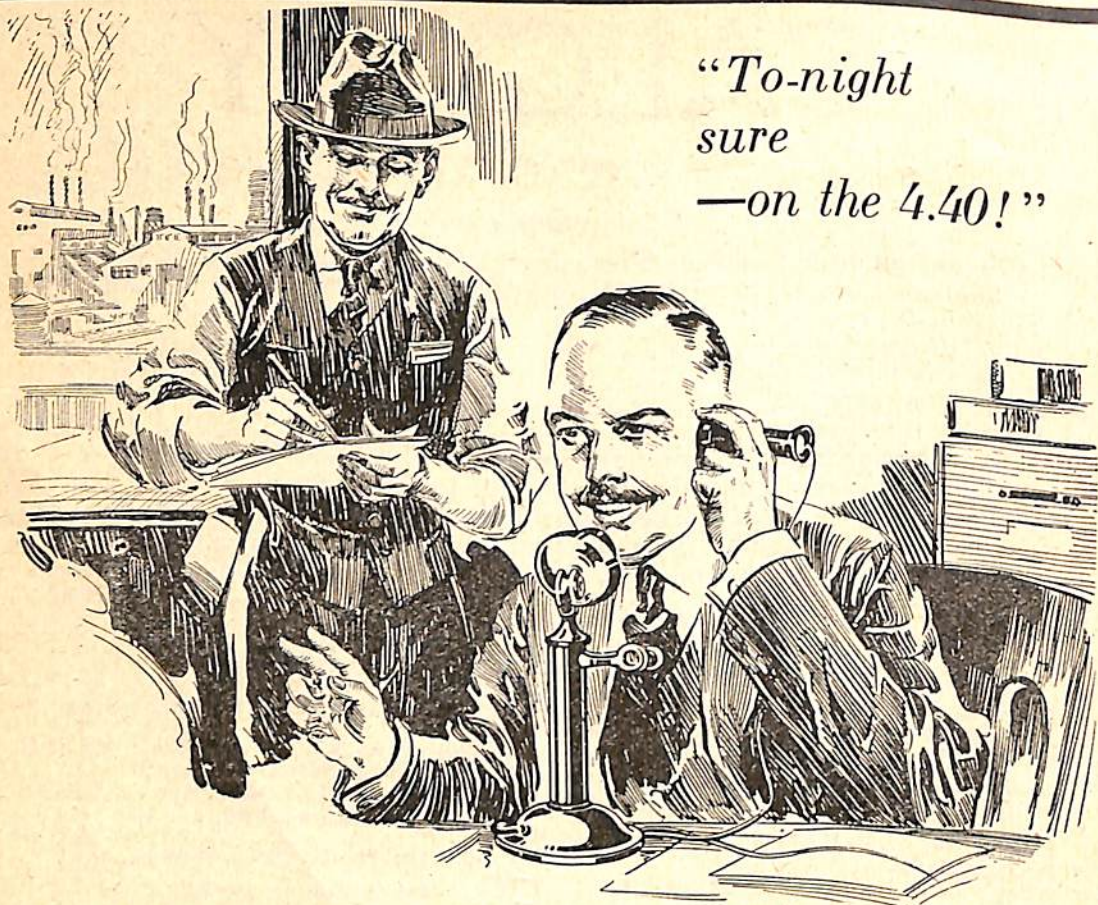
128 Seventh Avenue West

Continuous Service

For Information regarding New Subscribers, Change of Telephone Numbers, Long Distance Line Charges, New Toll Offices, etc.	Call	92
For Trouble	"	93
For Rural Subscribers	"	94
For Long Distance Operator	"	0
For Chief Operator	"	M5514
For District Traffic Chief	"	M6113
Report Telephones Out of Order and Unsatisfactory Local Service to		93
Report Unsatisfactory Long Distance Service to Chief Operator		M5514
To City Subscribers:—For connection with rural subscribers, call 94, and when operator answers give the number of rural subscriber desired, distinctly, as R 3-5-0-2.		
For List of Rural Subscribers, see pages following list of Exchange Subscribers.		
For FIRE	Call	M1197

PUBLIC PAY STATIONS

- 62 Alexandra Hotel—9th Ave E
- 56 Allen Theatre—119 8th Ave E
- 4 Allen's Palace Theatre—Ladies Waiting Room
- 78 Allen's Palace Theatre—8th Ave W
- 28 Auto Camping Ground—St. Patricks Island
- 67 Black's Drug Store—Carscallen Blk., Sunnyside
- 23 Braemar Lodge—4th Ave W
- 53 Brown's Drug Store 4th St & 17th Ave W
- 25 C.N.R. Depot—18th Ave & 1st St W
- 74 C.P.R. Depot
- 76 C.P.R. Depot
- 96 C.P.R. Depot
- 61 Capitol Theatre—8th Ave W
- 52 Capitol Theatre—8th Ave W
- 91 Club Cafe—111 8th Ave W
- 35 College Apts.—1722 5-A St W
- 60 Crooks, The Druggist—17th Ave & 14th St W
- 51 Davidson Susan—507 4th St W
- 30 Dean's Pharmacy—1314 B 9th Ave E
- 83 Dominion Hotel—120 9th Ave W
- 44 Dubisky's Confectionery—139 7th Ave E
- 64 Dunford Drug Co.—Herald Bldg.
- 33 Empire Confectionery—502 8th Ave E
- 16 Empire Hotel—9th Ave E
- 24 Empire Hotel—9th Ave E
- 39 Empress Confectionery—1225 9th Ave E
- 58 Esdale's Drug Store—1317 1st St W
- 21 Exhibition Office—Victoria Park
- 15 Grand Cigar Store—Lougheed Bldg
- 34 Harry's Drug Store—218 8th Ave E
- 7 Home Delicacies—135 8th Ave W
- 100 Hotel Noble—1st St W & 13th Ave
- 20 Hotel Noble—1st St W & 13th Ave
- 32 Hotel Noble—1st St W & 13th Ave
- 71 Hotel Noble—1st St W & 13th Ave
- 47 Hotel Royal—cor 2nd St W & 8th Ave
- 85 Hudson's Bay Company—1st St W
- 86 Hudson's Bay Company—1st St W
- 87 Hudson's Bay Company—1st St W
- 88 Hudson's Bay Company—1st St W
- 89 Hudson's Bay Company—1st St W
- 92 Hudsons Bay Tobacco Store—1st St W
- 57 Imperial Hotel—9th Ave & 2nd St E
- 40 Innes G.—434a 8th Ave E
- 12 Jeffrey Drug Co—219 4th St SE
- 22 King Edward Hotel—9th Ave & 4th St E
- 26 King George Hotel—9th Ave W
- 27 King George Hotel—9th Ave W
- 94 Kolb's Restaurant—8th Ave W
- Liggetts-Findlay Drug Stores—
 - 66} 8th Ave & 1st St W
 - 68}
 - 63} 8th Ave & Centre St
 - 80}
- 10 MacFarlane's Drug Store—12th Av & 1st St W
- 99 Maclean's Drug Store—Maclean Blk
- 11 Maple Leaf Candy Co—140 8th Ave E
- 8 McCrohan's Cafe—136-138 9th Ave W
- 95 McDermid Drug Store—128a 8th Ave W
- 48 McGill's Drug Store—17th Ave & 7th St W
- 36 McIvor's Drug Store—718 3rd St NE
- 38 Morgan Billy Confectionery—1229 2nd St E
- 70 Palliser Hotel—9th Ave W
- 37 Park Hotel—4th Ave E
- 93 Patricia The—234 8th Ave W
- 98 Perry Drug Store—Alberta Corner
- 17 Phoenix Cafe—811 Centre St
- 82 Plaza The—Lougheed Bldg
- 14 Princess Drug Co—8th Ave & 2nd St E
- 73 Queen's Hotel—8th Ave & 2nd St E
- 49 Rainbow Confectionery—230 17th Ave E
- 45 St. George's Island Pavilion—St. George's Island
- 9 St. Regis Hotel—7th Ave E
- 6 Shouldice Pavilion—Shouldice Park
- 50 Stock Yards Hotel—East Calgary
- 75 Temple-Duff Drug Co.—240 8th Ave. W
- 46 Thomas Block—707 2nd St W
- 19) United Cigar Stores Ltd—cor 8th Ave & 1st St W
- 54)
- 43 Victoria Hotel—121a 8th Ave E
- 84 Victoria Hotel—121a 8th Ave E
- 79 Waverley Billiard Parlors—210 8th Ave W
- 31 White Lunch Ltd—128 8th Ave E
- 13 Whitney Hotel—110 9th Ave W
- 55 Williams Drug Store—239 16th Ave NW
- 72 Yale Hotel—9th Ave E



*"To-night
sure
—on the 4.40!"*

For the Quick Service —that brings repeat orders

"LET me get him on Long Distance, and I'll soon put this right"—says the shrewd business man, as an emergency arises.

His personality, with the persuasive tones that helped him build up his business in the old days, is still the greatest force at his command, and it rarely fails to bring the needed results.

Long Distance permits him to retain that personal contact and influence with men in distant places on which his success was built. "If one of our travellers fails to secure an important order, he gets me on Long Distance before the interview is over, and I nearly always land it."

The power of Long Distance as a business-getter is only beginning to be appreciated. Use your "Silent Partner," and see how economically it produces results. Many of your Long Distance calls can take advantage of the Station-to-Station rate. Ask our Local Manager to explain how.

From your desk you can talk by long Distance with 100,000 telephones in Alberta, Saskatchewan and British Columbia. May we help you?

THE ALBERTA GOVERNMENT
TELEPHONES



Phones:
M6286
M3940

Empire Cleaning & Dyeing Co Ltd

CALGARY

"RELIABLE! THAT'S ALL!"

ALBERTA

234-236
12th Ave.
West

Calgary Exchange Subscribers

(For Rural Subscribers see Pages at End of Exchange Subscribers)

A
M 3292 **A A AUTO BAGGAGE TRANSFER** Edgar F Steel Prop 617 7th Ave E
M 3292 **A A AUTO GARAGE** Edgar F Steel Prop 617 7th Ave E
M 4227 A 1 Auto Livery Geo Miller Prop 110 9th Ave W
M 5201 A 1 Cleaners & Dyers 1235 2nd St E
M 3344 **AI WINDOW CLEANING CO** 1315 Centre St
M 2223 A B Auto Livery 110 9th Ave W
M 4485 **A B C BATTERY SERVICE** 420-2 9th Ave E
M 6479 A B Cafe 206a Centre St
M 4445 **AARON AUTO LIVERY** Cruickshank & Soper 112 9th Ave W
M 5181 Aaron Joseph L res 721 5th Ave W
M6444 **ABBOTT AUTO LIVERY** Norman Soper 106 9th Ave W
M 4303 Abbott Sam Taxi Noble Hotel
M 6010 Sam Abbott res 1120 1st St E
H 1141 Abercrombie Wm res 1430 2-A St NW
M 1394 Aberdeen Apts Janitor 2206a 4th St W
W 4245 Aberhart William res 1216 13th Ave W
M 7234 Abram Mrs Emma res 1 Costello Blk
W 2480 Acadia Apts (Janitor) 812 12th Ave W
M 3790 Acadia Fire Insurance Company Local Agents F W Mapson & Co Union Bank Bldg
M 1043 **ACADIA FIRE INSURANCE COMPANY THE** Thos Bailie Inspector 329 Alberta Corner
M 5241 **ACE AUTO CARTAGE** 3621 1A St W
M 7318 **ACKLAND D & SON LTD** Wholesale Carriage & Wagon Hardware 722 11th Ave W
M 3576 **ACKLAND W A AGENCIES** Insurance 423 Loughheed Bldg
W 4296 Ackland W A res 819 17th Ave W
M 7785 **ACME AUTO BAGGAGE TRANSFER** 526 12th Ave W
M 3894 **ACME FRUIT CO LTD** Manager and Sales Dept 510 9th Ave W
M 6599 Credit Manager and General Office
M 5050 Shipping and Sales Dept
M 2997 Order & Confectionery Dept
H 1801 P C Hiles Manager res 311 12th Ave NW
H 2160 C Cockroft res 1620 3rd St NW
M 2238 Acme Garage J H Watts 706 10th St W
W 1982 Acton George res 1509 22nd Ave SW
M 3792 Acton Mrs James res 418 13th Ave E
M 1255 **"AD" CARDS** J Bird 35-36 Lineham Blk
L 1818 Adam Charles res 220 15th St NW
W 4620 Adam J G res 1805 17th St W
M 2665 Adams A res 630 11th Ave W
M 4904 Adams A F res 210a 29th Ave SE
M 4611 **ADAMS C F & PLUMMER N M** (See Adams Charles F & Company)
M 4611 **ADAMS CHARLES F & CO** Barristers & Solicitors Bank of Montreal Bldg Private Branch Exchange connecting all Depts
M 1281 Charles F Adams K.C. res 721 Riverdale Ave
M 4821 Norman M Plummer res 514 21st Ave W

M 1281 Adams Charles F KC res 721 Riverdale Ave
L 1802 Adams D R res 226 10 1/2 St NW
H 1411 Adams Mrs E A res 214 27th Ave NW
M 1348 Adams E D res 1002 39th Ave W
E 5868 Adams E G res 2321 6th St E
M 6280 Adams E M office 118 11th Ave E
M 7419 Adams E M res Room 660 Palliser Hotel
M 1638 Adams F C res 412 5th Ave W
E 5019 Adams F G res 1625 17-A St E
M 5227 Adams G G res 407 40th Ave W
W 1772 Adams H K res 1451 21st Ave W
H 1071 Adams Henry J res 2312 1st St NW
H 2443 Adams J res 219 23rd Ave NE
M 2251 Adams J D & Co Rd Grading Machy 224 11th Av W
M 5825 Adams J H res 316 20th Ave W
M 9394 **ADAMS DR J M** Eye Ear Nose & Throat 508-9 Herald Bldg
M 7252 Adams Dr J M res 314 Roxboro Rd
M 7540 Adams Margaret Public Stenographer 1008 Herald Bldg
L 1441 Adams S H res 1340 16-A St NW
M 2418 Adams W A Groceries No 1 Store 101 5th St W
H 2230 No 2 Store 202 16th Ave NE
W 4957 Adams W S res 839 18th Ave W
E 5661 **ADAMS WOOD & WEILLER LTD** Live Stock Commission Merchants Livestock Exchange E Calgary
W 1772 Harvey K Adams res
M 1616 **ADAMS & FITCH** Barristers & Solicitors 59-60a Union Bank Bldg
L 1441 S H Adams res 1340 16-A St NW
L 1647 I F Fitch res 1312 16th St NW
W 4018 Adamson J S res 2401 14th St W
M 3009 **ADANAC TRANSFER & AUTO CARTAGE** J B Miller 621 1st Ave W
H 1849 Adcock J E res 122 11th Ave NW
H 2023 Addy C E R res 225 6th Ave NE
M 4746 Adie G G res 3612 Stanley Rd
M 4773 **ADLAM COLLEGE OF MUSIC** G H Adlam Director 405a 8th Ave W
H 1337 Adlard R H res 613 24th Ave NE
H 1413 Adshead H B res 119 28th Ave NW
M 4486 Advance-Rumely Thresher Co Inc Repair Dept 628 9th Ave W
M 1978 Advance-Rumely Thresher Co Inc General Office L D Benedict Mgr 628 9th Ave W
M 7887 Advance Shoe Repairs The Wm Robinson 1223 2nd St E
H 1069 **AERO CUSHION INNER TIRE CO** 2105 1st St NE

AUTO TAXI
AUTO TAXI & LIVERY SERVICE
M3545 J. J. REEDY, Proprietor
2nd AVENUE WEST

PRINTING? Just Phone M2380

ALBERTAN JOB PRESS - FIRST STREET EAST - CALGARY

- M 7331** Aetna Insurance Co Hail Dept 55 Canada Life Bldg
M 1443 AGNEW WALTER G Jeweller 813 1st St W
M 3315 Agnew Walter G res 113 Garden Crescent
M 3476 Agrell F W res 209 25th Ave W
L 1156 Ahrens Fritz res Morley Trail
M 3157 Aiello Mich res 215 6th St NE
M 3945 **AIELLO S** Importer Italian & French Specialties Whol & Retail 201 4th Ave E
M 4090 Aikenhead Dr Albert E Surgery 315 Herald Bldg
W 1948 Aikenhead Dr Albert E res 913 19th Ave W
M 7804 Aikins E W res 1415 5th St E
M 3926 Ainslie John res 331 4th Ave E
M 4228 Air Liquid Co Ltd The 202 1st St E
W 4751 Aird Alexander res 206 Devenish Apts
H 1204 Airey J res 325 32nd Ave NE
E 5365 Airlie P res Block 23 Albert Park
M 7339 Aisenstat Sam res 410 5th Ave E
H 1323 Aitken Allan D res 1437 2nd St NW
M 3016 Aitken Archie P res 101 24th Ave E
H 1995 Aitken J B res 721 4 1/2 St NE
M 9109 Aitken Miss Jean res 318 Underwood Blk
M 5231 Aitkens E J res 307 18th Ave W
W 4056 Aitkens George res 1749 College Lane
H 1173 **AJAX ELECTRICAL & SPORT-ING GOODS** George Rounce 219 16th Ave NW
H 1691 Aked Edward res 721 17th Ave NW
M 2242 **AKITT & HARRISON** Sight Specialists 807 Herald Bldg
W 4175 Akitt Herbert J res 932 15th Ave W
W 4444 Al Azhar Temple Co Ltd 506 17th Ave W
M 2541 Alamo Buffet cor 4th St E and Blvd Riverside
M 3359 Alberta Art Co 214 7th Ave W
M 5990 Alberta Associated Oil Fields Ltd 1003-1004 Lancaster Bldg
M 7289 **ALBERTA AUCTION MART** J Roginsky Prop 402 8th Ave E
M 6123 **ALBERTA AUTO RADIATOR WORKS** 603 1st St E
M 4485 **ALBERTA BATTERY CO LTD** 420-2 9th Ave E
E 5168 Alberta Box Co Ltd C J Williams Mgr 11th Ave and 11th St E
E 5290 Coal & Wood Mills Estate
E 5172 D L Boggs Coal & Wood Dept res
M 6840 Alberta Conference of S.D.A. 304 Oddfellows Bldg
H 1181 **ALBERTA ELECTRIC CO** 135 16th Ave NW
M 7981 **ALBERTA FARMER** Herald Building Private Branch Exchange Connecting all Depts
- DEPARTMENTS**
 General Information
 Advertising
 Subscriptions
 Editorial & News
 Advertising Manager
 Editor
- NIGHTS SUNDAYS & HOLIDAYS**
M 7981 Editorial & News Department
M 7985 Subscriptions
M 7987 Business & Advertising
M 5561 **ALBERTA FARMERS' CO-OPERATIVE ELEVATOR COMPANY LIMITED** (Successors United Grain Growers Ltd)
- M 4860** Alberta Financial Brokers Ltd 15 Elma Blk
M 6547 Alberta Flour Mills Ltd office 514 P Burns Bldg General Manager Edw E Stevens Secretary Treasurer S K Pearce
E 5434 Milling Plant East Calgary
M 9521 **ALBERTA GOVERNMENT EMPLOYMENT BUREAU** 144 7th Ave E Private Branch Exchange connecting all Depts Ask operator for class of workers required
M 7408 Alberta Government Liquor Vendor Roberts Blk 601 11th Ave W
- ALBERTA GOVERNMENT TELEPHONES** 128 7th Ave W
COMMERCIAL DEPT—CITY
M 3430 General Office
M 3699 Adjustments and Collections
M 6750 City Clerk
M 3490 Applications and Renewals
M 6430 City Commercial Manager
COMMERCIAL DEPT—DISTRICT
M 3830 General Office
M 7323 District Commercial Manager
M 6198 DIRECTORY AND ADVERTISING DEPT
M 6005 Directory Supervisor
PLANT DEPT
M 6126 Plant Chief "District"
M 6121 Plant Chief "City"
M 6115 Stores
TRAFFIC DEPT
M 6113 District Traffic Chiefs Calgary City & District
M 1940 **ALBERTA GRAIN CO LTD** 8th Floor Lancaster Bldg
E 5206 **ALBERTA GROCERY STORE** cor 19th Ave & 9th St E
M 3851 Alberta Home Builders Ltd 411 Grain Exch Bldg
M 2633 **ALBERTA ICE CO LTD THE** Cash & Household Order Dept Centre St & 10th Ave
M 6897 Office and Warehouse
H 1314 Manager's res
 Ice Plant Keith (see Rural 1902—call 94)
M 6734 **ALBERTA JOBBERS** 404 3rd St E
M 1446 Alberta Life & Accident Ins Co Ltd 128 7th Ave E
- ALBERTA LIVE STOCK ASSOCIATIONS** Offices, Exhibition Grounds
M 2506 E L Richardson Secretary & Managing Director
W 4233 E L Richardson res 1027 Prospect Ave
M 2506 Miss A E Hall Secretary to Managing Director
M 2732 W N Gibson Asst Secy & Secy Calgary Poultry Association
W 4268 W N Gibson res 1239 16th Ave W
M 2732 Thos Bellew Live Stock Superintendent
W 4088 Thos Bellew res 1034 17th Ave W
M 2732 F M Stanford Cashier
M 2732 Miss Mae Garnett Publicity Clerk
M 7524 Robert Spencer Grounds Superintendent res
M 5385 Alberta Loan Office Bloomenthal & Epstein 816 Centre St
M 4622 Alberta Lumber Co Ltd 5th Flr Southam Chhrs
M 6958 **ALBERTA MOTORIST THE** Have-lock Newcomb Editor Oddfellows Building 523 Centre St
M 3457 Alberta New & Second Hand Store 130 9th Ave E
M 7826 **ALBERTA NEWS CO** 706a Centre St

UNDERTAKERS
M7070

GRAHAM, Mc CALL
& BRENNEN, LTD

AMBULANCES
M7070

M 2684 ALBERTA OPTICAL CO LTD

THE Opticians 128 8th Ave W

M 2682 S A Bartlett Mgr res 3034 5th St W

M 3880 Alberta Pacific Consolidated Oils Ltd 200-202
Lougheed Bldg

M 6661 ALBERTA PACIFIC GRAIN CO LTD

General Office 8 Flr Lancaster Bldg
Private Branch Exchange connecting all Depts
John I McFarland President and Managing-
Director

C M Hall Secretary & Asst Manager

Treasurer

Office Accountant

Superintendent (North Alberta)

Superintendent (South Alberta)

Construction Department

Claims Department

Sales Department

Commission Department

Cashier

Coal Department

Terminal Elevator Department

NIGHT CALLS AFTER 18 O'CLOCK—

W 4810 President & Managing-Director

M 2827 Secretary & Assistant Manager

M 3596 ALBERTA PIANO CO LIMITED

Music Dealers 130 8th Ave W

W 1703 W H Ross Manager res

M 4225 ALBERTA PRODUCE CO LTD

Butter Eggs & Poultry 437 10th Ave E

M 1406 W H Hendrix Manager res

**ALBERTA PROVINCIAL
POLICE**

M 3284 General Office & Guard Room

M 5391 Liquor Branch 22 Union Bank Bldg

M 4441 Inspector W Brankley Private Office

E 5805 Inspector W Brankley res 926 8th Ave E

M 7553 Alberta Robe & Tanning Co 409 6th Ave E

M 4542 Alberta Rolling Mills Co Ltd 1011 Herald Bldg

M 5187 Alberta Rooms (Frank Bourassa) 142 9th Ave W

ALBERTA SANITARIUM Bowness
Park (See Rural 3506—Call 94)

M 1931 Alberta Shoe Hospital G W Piette 2208 4th St W

M 3837 Alberta Signs F J Brown Mgr 710 1st St E

**M 6016 ALBERTA STEAM LAUNDRY
CO LTD** 730 2nd Ave W

E 5661 Alberta Stock Yards Co Ltd

Local 25 General Office

Local 26 Manager E W Jones

M 6563 Alberta Stone Co Ltd 1720 9th Ave W

M 7434 Alberta Tailors 116 8th Ave E

M 6840 Alberta Tract Society S D A 305 Oddfellows Bldg

M 4805 ALBERTA TRANSFER J Nicol Mgr
424 13th Ave E

M 2380 ALBERTAN JOB PRESS J Rockley
Mgr Westminster Blk 10th Ave & 1st St E

L 1038 Manager's res 825 4th Ave NW

**M 2166 ALBERTAN PUBLISHING CO
LTD** 229 8th Ave W

Business Office and Circulation

M 6183 Editorial Department

M 1888 Composing Room

M 7134 Want Advertising Dept

M 9092 Alcock Wm res 518 9th St NE

M 7778 ALDER ERNEST Coal & Wood Dealer
6th St & 8th Ave E

M 2805 Aldrich Robert 709b 3rd St W

**M 4433 ALEMITE LUBRICATOR CO OF
WESTERN CANADA** High Pressure

Lubrication Systems for Cars & Trucks 216
12th Ave W

**M 9164 ALERT DETECTIVE & PATROL
SERVICE** 85 Union Bank Bldg

W 4668 Manager's res

M 9607 Alexander Mrs B res 608 9th Ave E

L 2294 Alexander Mrs C A res 728 3rd Ave NW

**M 1312 ALEXANDER CIGAR STORE &
NEWS STAND** S Dworkin Prop

204 8th Ave W Wholesale and Retail

Magazines Cigars Cigarettes and Tobaccos

W 4470 Alexander D L res 2210 24th St SW

M 9488 Alexander E H res 340 14th Ave E

W 4249 Alexander F W res 2327 10½ St W

W 4875 Alexander J Harry res 1017 11th Ave W

W 2258 Alexander J S res 1520 15th Ave W

W 4055 Alexander Oscar M res 2 Mount Royal Blk

W 1993 Alexander Rev R W W res 1 Wilson Apts

E 5875 Alexander W res 911 19th Ave E

M 4514 Alexander William res 208 40th Ave W

W 4968 Alexandra Confectionery The O Wolovnik 1401a
14th St W

M 4671 ALEXANDRA HOTEL 9th Ave East
Private Branch Exchange connecting all Rooms

M 4754 Alexandre A H res 625 Centre Ave NE

H 1123 Alford A C res 315 18th Ave NW

M 9336 Alford Miss E res 331 6th Ave W

M 2766 Allan A res 330 12th Ave W

M 1284 Allan A res 132 6th Ave W

H 1861 Allan Alex res 322 7th Ave NE

M 4857 Allan E H res 3231 7th St W

M 5789 Allan H W res 3rd St & 38th Ave W

M 1523 Allan James res 14 College Apts

L 1791 Allan Jas A res 932 3rd Ave NW

M 7616 Allan John res 1313 Centre St

W 2247 Allan R res 2030 21st Ave W

H 1873 Allan Mrs R res 728 4th St NE

W 4001 Allan R P res 831 17th Ave W

M 1699 **ALLAN THOBURN** Inspector of Tax-

M 1693 ation Room 18 Customs Bldg

M 6898 Allan Thoburn res 602 13th Ave W

M 1390 ALLAN & JOHNSTON Customs House
Brokers 70 Union Bank Bldg

M 4738 Allan's J Meat Market Western Market

L 1062 Allen A G res 114 10th St NW

W 2573 Allen A H res 2 Moxam Apts

W 4492 Allen A M res 1715 10th Ave W

H 1957 Allen C T res 717 4-A St NE

M 2235 Allen D L res 401 David Block

W 4433 Allen G res 1516 13th Ave W

M 7081 Allen Glendower res 1023 7th Ave W

W 2772 Allen H J res 802 Prospect Ave

E 5299 Allen J res 820 22nd Ave SE

M 1257 Allen Dr J L Physician & Surgeon 113a 8th Av W

M 9323 Allen Dr J L res 924 Riverdale Ave

M 9865 Allen Loftus H res 3222 7-A St W

M 9850 Allen Mrs M I res 302 Alta Loan Bldg

M 9042 Allen Miss Marjorie res 209 27th Ave E

M 5492 Allen T M res 1309 2nd St W

ALLEN THEATRES

M 5479 Allen Theatre 119 8th Ave E

M 7441 Manager's Office (Joe F Price)

W 2615 Allen W A res 2227 20th Ave SW

M 6140 Allen W D res 601 7th St W

ALLEN & ALLEN Grocers 114 10th

L 1572 Credit Service Department

L 2163 Cash & Carry Department

St NW

Directory Advertising Brings Business

- W 2693** Allergoth M J res 2420 24th St SW
M 6686 Allis-Chalmers Ltd (Canadian) cor 4 St W & 11 Av
W 4607 Allison Miss Florence W res 1342 14th Ave W
M 1320 **ALLISON H A** Law office 227a 8th Ave W
M 1079 Allison H A res 203 4th Ave W
M 1285 Allison Mrs L res 507 2nd St W
M 1979 Allison Lloyd res 1115 7th Ave W
M 5896 Allison S A res 117 26th Ave W
L 2112 Allison Thomas res 608 15th St NW Hillhurst
H 1196 Allison W H res 201 12th Ave NE
M 4983 Allott F W res 302 25th Ave W
W 1559 Alloway F E res 619 14th Ave W
M 7466 Allum George T res 2205 5th St W
L 2168 Allwood Harry res 2230 2nd Ave SW
M 1053 Almack F res 226 12th St NE
M 5706 Alport Edwin J res 308 14th Ave W
M 6966 Alsbaugh H O res 334 14th Ave W
M 5306 Alston A res 310 18th Ave W
W 1468 Altadore Grocery G S Purdy Prop 1927 34th Ave SW
M 5173 Altman E H res 316 12th Ave W
M 9324 Alton R res 712 36th Ave W
W 1321 Alward Frank B res 729 17th Ave W
W 4465 Ambry Mrs W J res 921 14th Ave W
M 2323 **AMBULANCE** Armstrong Funeral Home 304 12th Ave W
M 7070 **AMBULANCE** Graham McCall & Brennen Ltd 611 Centre St
M 3030 **AMBULANCE** A M Shaver 1206-10 1st St E
M 6415 **AMBULANCE AND UNDER-TAKING** Foster & Foster successors to Harrison & Foster 320 12th Ave W
M 9999 American Auto Livery 112 9th Ave W
M 6094 American Cafe 321 8th Ave E
M 2588 **AMERICAN CENTRAL INSURANCE CO** 54 Canada Life Bldg
M 6263 American Consulate 210 P Burns Bldg
M 6262 **AMES HOLDEN MCCREADY LTD** Wholesale Boots & Shoes 221 7th Ave W
M 7024 Fred M T Logan Mgr res
H 1387 Amos Henry res 214 20th Ave NW
M 2778 Amphlett Major C E 29 Marlborough Mansions
H 2440 Ancell Wm res 3302 3rd St NW
H 1467 Ancock Mrs E res 116 25th Ave NW
M 2031 Anderl John F res 836 5th Ave W
M 3337 **ANDERSON A MELVILLE** Optometrist & Optician (Chauncey's Jewellery Store) 116a 8th Ave E
L 1301 Anderson Alex R T res 1804 24th Ave NW
M 5571 Anderson Apartments 18th Ave & 7th St W Private Branch Exchange connecting all Suites Vic Anderson Estate
M 2131 **ANDERSON BROS** Auto Exchange 7th Ave bet Centre & 1st St E
M 2131 **ANDERSON BROS** Taxi & Livery 7th Ave bet Centre & 1st St E
E 5861 Anderson Mrs C res 802 23rd Ave SE
M 2678 Anderson C J res 217 14th Ave E
M 9462 Anderson C M res 9 Graham Blk
W 2125 Anderson D res 2026 34th Ave SW
M 3895 **ANDERSON D B** Flour & Feed 234 7th Ave E
M 6037 Anderson D B res 1031 7th Ave W
H 2040 Anderson D Keith res 117 14th Ave NW
W 1053 Anderson D S res 834 19th Ave W
M 2947 Anderson David res 915 8th Ave W
L 1613 Anderson David res 1610 2nd Ave SW
W 1397 Anderson David (J Eveleigh & Co Ltd) res 2911 16th St W
M 5320 **ANDERSON DELIVERY CO** THE 120 7th Ave W
E 5972 Anderson E Barber 1210a 9th Ave E
H 1771 Anderson E res 732 19th Ave NW
E 5247 Anderson E E res 54 New St
M 4108 **ANDERSON E J** Optometrist & Optician 224 8th Ave W
W 4243 Anderson E J res 2417 14a St W
H 2011 Anderson E M res 708 4th St NE
W 2892 Anderson E O res 2412 16-A St W
L 2264 Anderson F res 836 Boulevard NW
E 5871 Anderson G res 1012 19th Ave E
M 3059 **ANDERSON DR G A** Physician office & res 126 6th Ave W
E 5192 Anderson G M res 1036 9th St E
M 6915 Anderson G R H res 616 13th Ave W
M 4542 Anderson Geo A res 1320 3rd St E
M 5837 Anderson H J res 105 Mission Rd Parkhill
M 4371 Anderson H M res 615 30th Ave W
M 4399 Anderson J A res 527 1st Ave W
W 2937 Anderson J J res 837 17th Ave W
M 7158 Anderson J J res 345 19th Ave W
M 7412 Anderson J V res 908 Sifton Boulevard
W 1153 Anderson James res 1524 15th Ave W
M 1398 Anderson James res 108 25th Ave W
W 1373 Anderson James T res 2203 21st Ave W
W 1548 Anderson John H res 812 16th Ave W
W 4234 Anderson John L res 1531 26th Ave W
L 1477 Anderson John Marshall res 604 1st Ave NW
H 1545 Anderson M V res 522 21st Ave NW
L 1184 Anderson N res 805 5th Ave NW
W 4128 Anderson O G Prop Huntly Apts 817 15th Ave W
H 1181 **ANDERSON PLUMBING CO** 135 16th Ave NW
M 5242 Anderson R res 809 3rd Ave W
M 3798 Anderson R R res 218 5th Ave W
W 2292 Anderson R S res 1913 26-A St W
M 6549 Anderson Sam C Transfer 1019 1st St W
M 9254 Anderson T N res 617 3rd Ave W
M 9313 Anderson V res 5 Bell Blk
M 2817 Anderson V R office 34 Central Bldg
M 9269 Anderson Victor res 511 2nd St W
W 2820 Anderson W res 1040 14th Ave W
H 1058 Anderson W B res 220 21st Ave NW
M 1985 Anderson W G res 119 Mission Rd Parkhill
L 1206 **ANDERSON & SHARP** Plumbing 142a 10th St NW
H 1220 Andrew Albert res 827 20th Ave NW
H 2307 Andrew G H res 113 22nd Ave NE
M 9133 Andrew H C res 826 Riverdale Ave
M 7354 Andrews C P res 133 14th Ave W
M 3899 Andrews James res 605 Lougheed Bldg
M 6293 Andrews W H res 511 17th Ave W
M 9426 Andrus C E res 413 7th Ave E
L 2305 Andrus Mrs O W res 0926 1st Ave NW
W 2034 Angow The Misses res 1219 16th Ave W
M 1044 Angus Malcolm R res 2012 2nd St W
E 5796 Annable J H res 2020 8th Ave E
W 2973 Annable W D res 1320 13th Ave W
W 1251 Annand E res 2136 18th St W
M 6942 Annand S A res 905 4th Ave W
W 2980 **ANSELL & HODGSON** Painters & Paperhangers 1608 14th St W
M 4206 **ANSLOW H T** Auto Top Builder & Upholsterer 129 3rd Ave E
M 9452 H T Anslow res 812 2nd Ave W



Men's Wear Shop

THE BLACK AND WHITE CHECK FRONT.

JOHN R. GARDEN



- W 4180 Anstie Alfred E res 624 15th Ave W
H 2161 Anthony Fred res 206 34th Ave NE
M 4973 Anthony G A res 605 24th Ave W
M 4540 Antliff A res 118 13th Ave W
E 5486 Apperley A res 2301 6th St E
L 2063 Appleby Rollit res 427 13th St NW
M 6952 Appleford Counter Check Book Co Ltd Wax Paper
Specialties J A Palmer Alta Rep 310 Leeson &
Lineham Blk
- L 2296 Appleton R res 221 15th St NW
M 3879 Arbogast C S res 226 25th Ave W
E 5558 Arbuckle Mrs A res 1331 8th Ave E
M 5472 Arcade Confectionery 211 8th Ave W
M 4114 Archer F B res 3437 7th St W
H 1425 Archer W H res 640 18th Ave NW
M 6798 Archibald A G res 3614 7a St W
L 1561 Archibald R H res 2736 Boulevard NW
M 1219 Archibald R W Plumbing & Gasfitting 414 5th Ave E
M 6686 Architectural Bronze & Iron Works of—Canadian
Allis-Chalmers Ltd cor 4th St & 11th Ave W
- M 3916 Ardern Wm res Lansdowne Ave & 8th St W
M 2998 **ARDLEY HARDITE COAL** Sidney
Houlton & Co Ltd Agents 125a 6th Ave W
M 3439 Yard Office 6th St & 8th Ave E
W 4748 **ARIS** The Tire Man Studebaker Garage 1517
8th St W
- H 1875 Arlidge A res 224 5th Ave NE
M 2667 Arlington Hotel 6th Ave & 2nd St W
M 5376 Armitage Mrs F A res 323 11th Ave W
H 2047 Armitage Geo res 239 15th Ave NW
M 5324 Armitage, The Tailor, 49 Elma Blk
M 9706 Armour W A res 109 23rd Ave W
M 7044 Armstrong C L res 1131 8th Ave W
M 2702 Armstrong Miss D Dress & Mantle Maker 21
Mackie Blk
- W 4261 Armstrong Mrs Elizabeth res 1217 9th St W
M 2323 **ARMSTRONG FUNERAL HOME**
304 12th Ave W
White Ambulance & Undertaking
Office and Long Distance
W 4195 Guy O Armstrong res 1813 8th St W
M 5637 M B Armstrong res 1905 2nd St W
M 5302 Armstrong Garage 119 12th Ave W
M 5490 Armstrong Dr J M Phys & Surg 315 Alberta Cor
M 6275 Armstrong Dr J M res 4240 6th St Elbow Park
L 1353 Armstrong Jas res 1440 Boulevard NW
M 9285 Armstrong Mrs M A res 1214 1st St E
M 2491 Armstrong M J res 3617 6a St W
E 5842 Armstrong R res 2134 15th St E
L 1723 Armstrong R res 1224 Boulevard NW
M 7760 Armstrong Miss Thelma res 604 7th Ave E
M 3509 Armstrong Col W C res 1919 2nd St E
M 7547 Armstrong W S res 1926 5 1/2 St W
- ARMY & NAVY VETERANS**
M 3710 Secretary's office
M 5427 Club House 1115 8th Ave W
E 5395 Arnew E res 1408 11th Ave E
L 1364 Arnold E T res 818 3rd Ave NW
W 4005 Arnold H J res 1601 11th Ave W
M 6367 **ARNOLD J S** Rental and Real Estate Agent
507 Grain Exchange
M 1441 Arnold J S res 11-328a 8th Ave W
M 9621 Arnold, John res 325 37th Ave SW
M 6718 **ARNOTT O C CO LTD** Bond Dealers
& Investment Bankers Royal Bank Chhrs
E 5932 Arstad A B res 1314 11th Ave E
M 4080 **ART SHOP THE J W** Booth 237a 7 Av W
M 4883 **ART SIGN CO** Howell & Roberts 1114a
W 2909 Residence 1st St W
- M 6763 Art & Picture Frame Co 125 8th Ave W
L 1845 Arthur R B res 226 15th St NW
L 2477 Arundell W R res 314 14th St NW
M 7789 Asbury W res 409 8-A St NE
L 1938 Ash Geo res 704 2nd Ave NW
M 4557 Ash George E res 711 11th Ave W
H 1252 Ashcroft Henry res 239 20th Ave NW
W 2114 Ashcroft Joseph W res 1312 17th Ave W
- M 5555 **ASHDOWN THE J H HARD-
WARE CO LTD**
Private Branch Exchange connecting all Depts
Wholesale Office & Warehouse 240 11th Ave W
Night Calls M5559 or M1088 J B Jenkins
Credit Manager A P Donnelly res 2112 5-A St W
General Manager Thos E Yuill res 321 21st Ave W
RETAIL STORE 110 8th Ave W
Night Calls—
M 5555 Hardware & Cutlery
M 5556 House Furnishings & Stoves
M 5557 Paint & Glass
M 5558 Sporting Goods
M 9382 Manager Ralph W Patterson res 517 19th Ave W
W 2492 Ashley F N res 814 12th Ave W
H 1095 Ashmead Albert F res 1502 Centre St N
M 4064 Ashton T H res 535 11th Ave W
H 2369 Askew E L B res 812 20th Ave NW
M 7647 Asling W F res 119 2nd Ave E
L 1401 Aspden Geo Sr res 824 3rd Ave NW
L 2252 Aspden Geo res 329 9-A St NW
- M 3715 **ASSOCIATED CHARITIES** Police
Station Bldg
M 2715 **ASSOCIATED MORTGAGE IN-
VESTORS** 612 Grain Exchange
J. H Maguire Insp res 631 11th Ave NE
W 2092 James Maguire Mgr's res 1613 13th Ave W
M 9972 Astell Ernest G res 340 20th Ave W
M 3408 Astley Edwin M res 3044 2nd St W
L 1249 Atherton E J res 1 Phyllis Apts
L 1616 Atherton Joseph Foreman Plumber C P R res 304
10 1/2 St NW
H 1172 Atherton W R res 710 18th Ave NW
M 6167 Athey C W Can Hdw & Implt Undrs 504 Mac-
lean Blk
- M 5396 Athey C W res 402 38th Ave W
M 3117 Athletic Billiard Parlor 128a 8th Ave W
M 5275 Athletic Cigar Store 817a 1st St E
W 2032 Atkins Miss Agnes res 625 11th Ave W
E 5950 Atkins J A res 1634 15th St E
M 6593 Atkinson Mrs A E res 1027 7th Ave W
M 2878 Atkinson Miss Eugenie A res 6 Rossmore Apts
W 4416 Atkinson Mrs Evelyn res 540 12th Ave W
M 3543 Atkinson Mrs F G res 204 1st St W
M 9104 Atkinson G E res 119 12th Ave E
W 4691 Atkinson J T res 1745 13th St W
M 6592 Atkinson Dr P G res 3235 7-A St Elbow Park
M 9884 Atkinson P J res 502 14th Ave E
M 5289 Atkinson R res 2401 1st St W
W 4963 Atkinson W H res 1833 18th St W
M 2980 Atkinson & Hawkshaw Drs Dentists 410 Herald
M 1486 Atlantic Cafe 315 8th Ave E Bldg
- M 2736 **ATLAS ASSURANCE CO LTD**
O E Tisdale Agent 604-605 Herald Bldg
M 4621 Atlas Lumber Co Ltd 5th Floor Southam Chambers
M 6977 **ATTREE MISS GLADYS** Dance
Studio 403 8th Ave W
H 1818 Attridge A res 1319 2nd St NW
E 5930 Attwood R T Livestock Sales Supt United Grain
Growers Ltd Alberta Stock Yards East Calgary
M 6848 Attwood R T res 326 20th Ave W

For Long Distance Rates and Points in Other Districts

See Pages 9 to 12
or Call "LONG DISTANCE"

- M 4368** Atwater Kent Service Station 219 17th Ave W
M 4410 Augade Madame A res 802 8th Ave W
W 4164 Auger A R res 1 Cornell Apts
M 3520 Auger J J res 219 9-A St NE
L 1716 Auld Ben D res 0916 1st Ave NW
M 2164 **AULD DR J W** Specialist in Genito-Urinary Diseases 212 Dominion Bank Bldg
M 5827 Auld Dr J W res 624 26th Ave W
M 3281 Aull Dr E Surgery 5-205 12th Ave W
M 2802 Aull Dr E res 233 12th Ave W
M 2435 **AULTMAN & TAYLOR MCHY CO THE** 902 9th Ave W
M 9694 E L Witherspoon Manager
M 4249 Austen Music Supply 720 2nd St W (See Melody Shop)
L 1151 Austin A J res 909 4th Ave NW
M 5252 Austin Arthur G office 41 Elma Blk
M 1757 Austin Arthur G res 318 14th Ave W
M 9868 Austin E res 2434 1-A St E
H 1874 Austin E A res 322 6th Ave NE
H 1623 Austin J P res 228 29th Ave NW
H 2087 Austin John R res 234 4th Ave NE
W 4435 Austin R E res 1311 12th St W
H 2437 Austin Roy C res 425 16th Ave NE
M 5742 Austin W H res 1 Wallace Apts
M 6958 **AUTO CLUB** Information Bureau Oddfellow's Bldg 523 Centre St
M 7632 Auto License Office C A Mitchell Old Court House
M 3066 **AUTO SUPPLY LEAGUE** 1208a 1st St W
M 3545 **AUTO TAXI & LIVERY SERVICE** J J Reedy Prop 2nd Ave & 6th St W
W 4748 Auto Tire Vulcanizing Works The 1517 8th St W
M 7370 **AUTO TOP & TRIMMING CO** 407 3rd St W
M 9232 **AUTO WRECKERS & SALVAGE CO** Geo S Wayman Mgr cor 4th Ave W & Louise Bridge
M 4050 **AUTODROME THE** W A Stoddart & O Strain 135 7th Ave E
M 7712 Avenue Cigar Store & Barber Shop The 233 8 Av W
W 1192 Avenue Dry Goods Store The 2801 17th Ave W
M 5335 **AVENUE PRESS THE** 229 8th Ave W
M 2360 P Proverbs Prop res 827 4th Ave W
L 2054 Averill F P res 2022 2nd Ave NW
H 1789 Avis Mrs Ethel res 2214 4th St NE
W 1224 Avis G res 830 18th Ave W
H 1949 Axton G W res 317 5th Ave NE
M 3861 Ayer J C res 1914 5th St W
M 4459 Aylesworth A P res 637 11th Ave W
M 1427 Ayling E H res 818 36th Ave W
L 2301 Ayres F res 1124 5th Ave NW
- B**
- M 4191** **B.B.B. CO OF CANADA LTD** Pipes, Sundries, Cg'ttes & Tobacco 200 Travellers Bldg
H 1202 T N White Rep res 239 21st Ave NW
 B.C. See also British Columbia
M 4819 **B C FRUIT MARKETS COMMISSIONER** J A Grant 16 231 8th Av W
M 4911 **BPO ELKS** Calgary Lodge No 4 Top Floor Travellers Bldg
M 3148 **B & T TRANSFER** 1004 2nd St E
M 6022 Bachand Chas res 320 19th Ave W
M 5186 Backhouse Geo res 218 10th St NE
E 5981 Bacon G H res 1018 18th Ave E
E 5278 Bacon J res 24 Seven Oaks Court
H 1135 Badcock Albert J res 417 20th Ave NW
E 5745 Badger G res 820 17th Ave E
H 1146 **BAGGAGE TRANSFER** M T Fitzpatrick 315 17th Ave NW
M 4805 **BAGGAGE TRANSFER** J Nicol 424 13th Ave E
M 7785 **BAGGAGE TRANSFER ACME AUTO** 526 12th Ave W
M 4366 **BAGGAGE TRANSFER BOOTH** 9th Ave E
M 3955 **BAGGAGE TRANSFER C P R** C P R Station
M 1563 **BAGGAGE TRANSFER** General Delivery 10th Ave & 1st St W
H 2393 Baggage Transfer North Hill 415 19th Ave NE
L 1855 **BAGGAGE TRANSFER SUNNYSIDE** 144a 10th St NW
M 6098 Baggage Transfer Co 1st St & 10th Ave E
M 2474 Bagley F A res 523 19th Ave W
W 2126 Bagley W H res 1515 22nd Ave SW
W 4979 Baiden C E res 1950 12th St W
M 2856 Baiden F H Boots & Shoes 130a 8th Ave W
L 2303 Bail R res 1704 17th Ave NW
H 2041 Bailey Chas res 333 5th Ave NE
W 2005 Bailey Chas S R res 2210 17-B St W
W 1431 Bailey E res 2111 18th St W
W 4257 Bailey Gibson res 1732 7th St W
W 2420 Bailey Harle res 1328 15th Ave W
M 1881 Bailey Harold res 317 12th Ave E
L 1397 Bailey J res 2105 5th Ave NW
L 1838 Bailey W H Financial Secy C.O.F. 302 12th St NW
M 2201 Bailey Walter J res 311 7th St W
M 7217 Bailie J res 11 Hatfield Court
W 2645 Bailie J D res 922 18th Ave W
M 1043 Bailie Thos office 329 Alberta Corner
W 1310 Bailie Thomas res 1710 24-A St W
E 5598 Baillie D J res 1127 10th St E
L 1868 Baillie Tom res 613 1st Ave NW
W 1128 Baily Austin R (R J Whitla & Co) res 2136 15th St W
W 1380 Bain C E res 1815 7th St W
M 2178 **BAIN DONALD H CO** Wholesale Commission Merchants office and Shipping Dept 11th Ave & 5th St W
M 2177 H C Andrew Manager
M 9133 Manager's res
H 1307 Bain G S res 222 21st Ave NW
M 2427 Bain Stables Co J Young 128 9th Ave E
L 2314 Baird A res 1637 3rd Ave SW
M 1287 Baird Andrew res 1115 6th Ave W
L 1654 Baird & Stevenson Bldg Contractors 1009 2nd Ave NW
M 3026 Baker A D res 630 7th Ave W
L 1259 Baker A G res 736 Blvd NW
W 4174 Baker A W res 2109 18th St W
W 4809 Baker Alex A res 827 15th Ave W
W 1826 Baker Bert res 1706 27th Ave SW
E 5768 Baker C M res 1028 18th Ave E
M 3446 Baker C M res 1825 Park Road
M 9344 Baker C M Co Ltd The 109 6th Ave W
M 3405 Baker C W res 1804 5th St W
W 4426 Baker Carl W res 1609 15th Ave W
W 1463 Baker F L res 1129 13th Ave W
M 3694 Baker G H res 23 Marlborough Apts
W 4590 Baker H E res 502 17th Ave W
W 1723 Baker H T res 1734 33rd Ave W
E 5132 Baker James res 1139 9th St E
M 1093 Baker Jas M res 3636 6-A St W